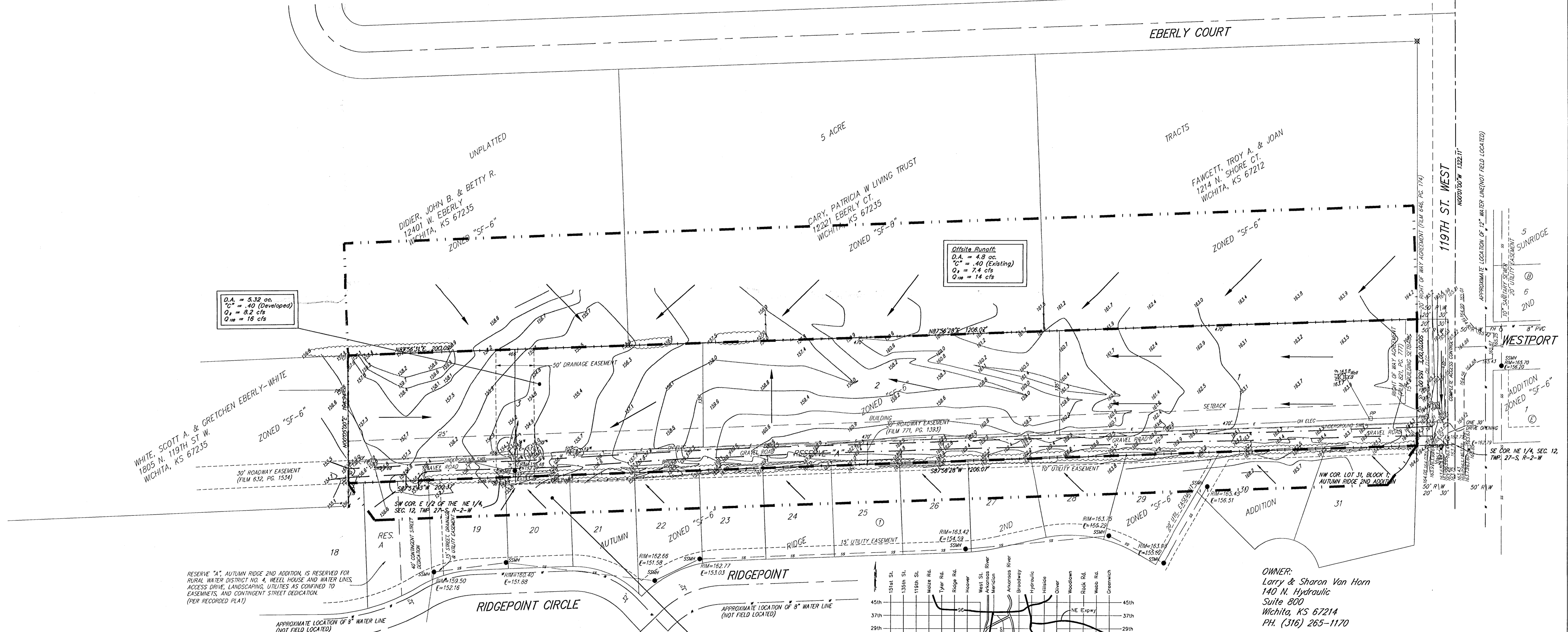
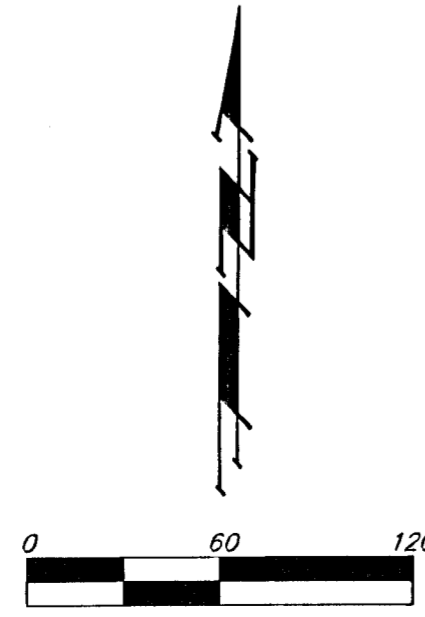
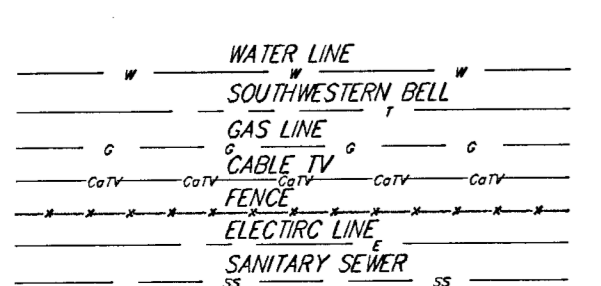


# DRAINAGE CONCEPT VAN HORN ADDITION WICHITA, SEDGWICK COUNTY, KANSAS

NE COR. S 1/2 OF THE NE 1/4,  
SEC. 12, TWP. 27-S, R-2-W

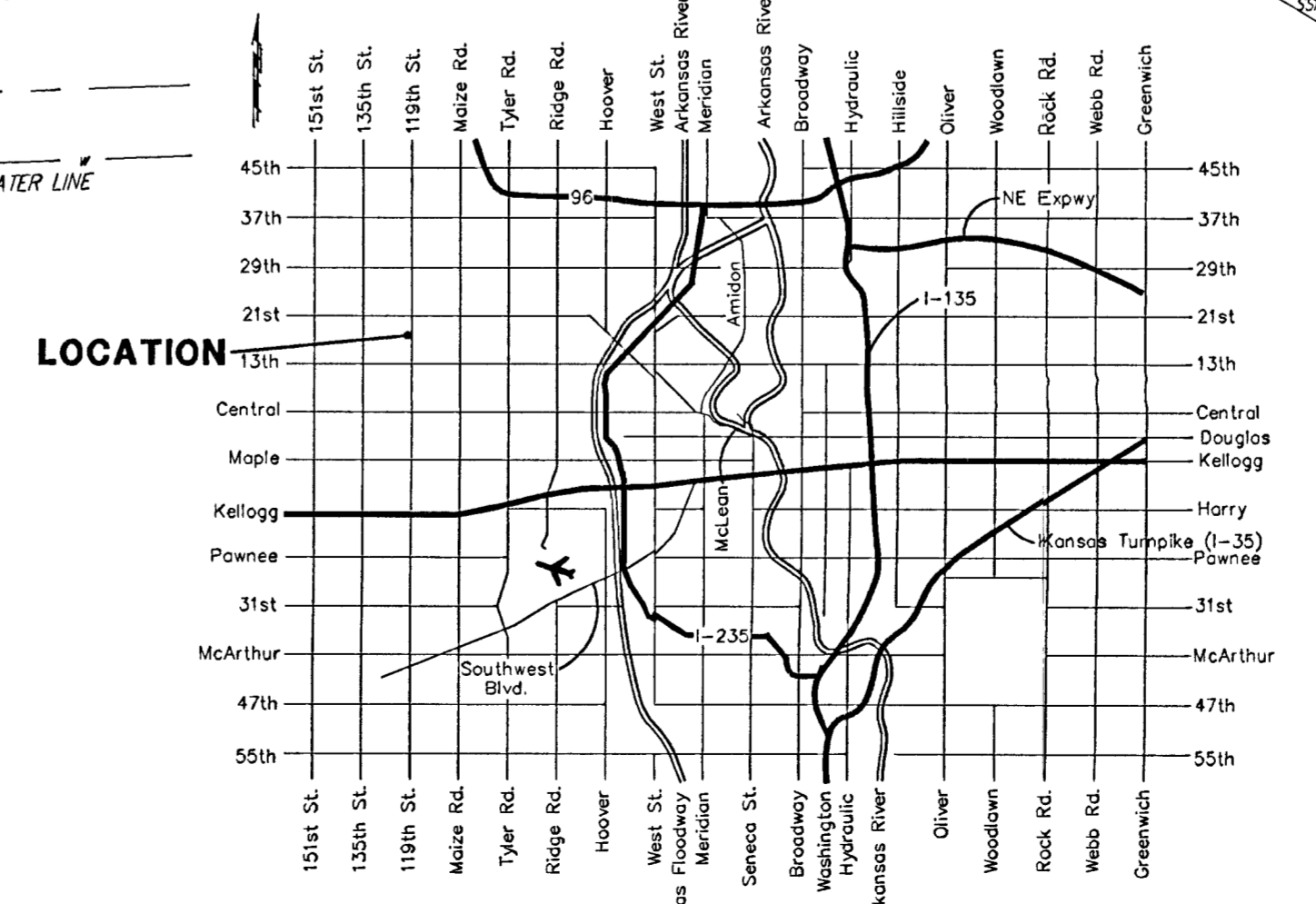


- # = #4 REBAR W/ "BAUGHMAN" CAP (FOUND)
- = #4 REBAR W/ "BAUGHMAN" CAP (SET)
- ⊙ = #4 REBAR W/ "R&G" CAP (FOUND)
- ⊗ = 3/4" IRON PIPE (FOUND)
- = 1/2" IRON W/ "ARMSTRONG" CAP (FOUND)
- = 2" IRON (FOUND)
- (M) = MEASURED
- (D) = DESCRIBED
- (P) = PLATTED
- (C) = CALCULATED
- (C-P) = CALCULATED PER PLATTED INFO.
- (C-D) = CALCULATED PER DEED INFO.
- (DEED) = DEED DESCRIPTION
- (C-DESD) = CALCULATED PER TRACT DESCRIPTION



- EB □ = Electric Box
- FX ○ = Fire Hydrant
- MB □ = Mail Box
- OA ○ = Oxy Anchor
- PP □ = Power Pole
- Sign ○ = Sign
- SSM ○ = Sanitary Sewer Manhole
- SWB Pnd □ = Southwestern Bell Pedestal
- SWM ○ = Stormwater Sewer Manhole
- T ○ = Tree
- W □ = Cased Well
- XTM □ = Transformer

**Offsite Runoffs**  
 D.A. = 1.6 ac  
 C = .54 (Existing)  
 Q<sub>1</sub> = 3.3 cfs  
 Q<sub>100</sub> = 6.4 cfs



**OWNER:**  
 Larry & Sharon Van Horn  
 140 N. Hydraulic  
 Suite 800  
 Wichita, KS 67214  
 PH. (316) 265-1170

**LEGAL DESCRIPTION:**  
 South 165 feet of the east 1456.25 feet of the S 1/2 of the NE 1/4 of Sec. 12, Twp. 27-S, R-2-W, of the 6th P.M., EXCEPT the east 50 feet for road.

**BENCHMARK:**  
 City of Wichita Disc 29.60' W. and 1' N. of centerline of 119th and 17th extended.

**NOTE:** RESERVE "A" IS RESERVED FOR ACCESS EASEMENT FOR PRIVATE DRIVEWAYS, OPEN SPACE, LANDSCAPING, DRAINAGE, UTILITIES, AND THE ROADWAY EASEMENT PER FILM 771, PAGE 1393.