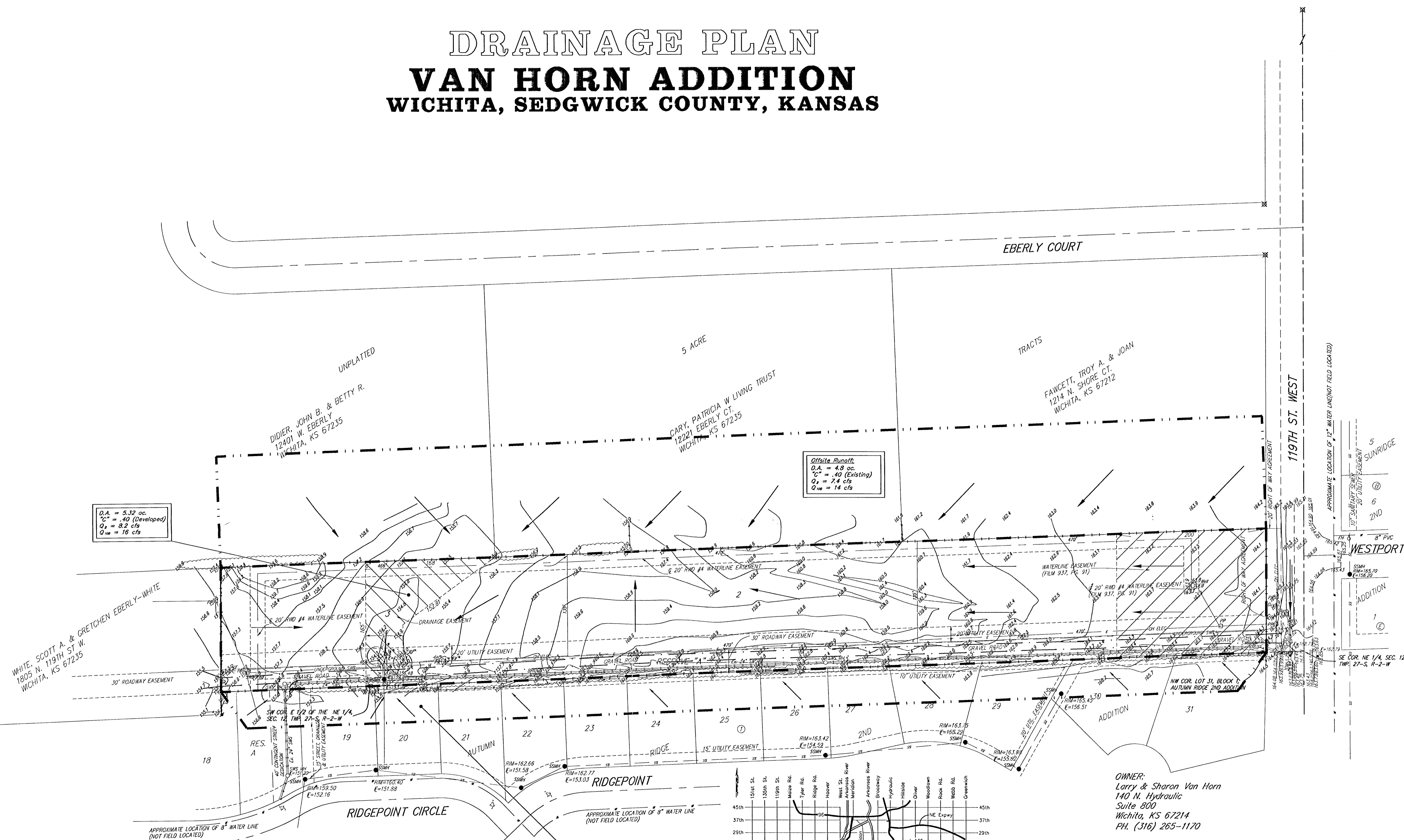


# DRAINAGE PLAN

## VAN HORN ADDITION

### WICHITA, SEDGWICK COUNTY, KANSAS



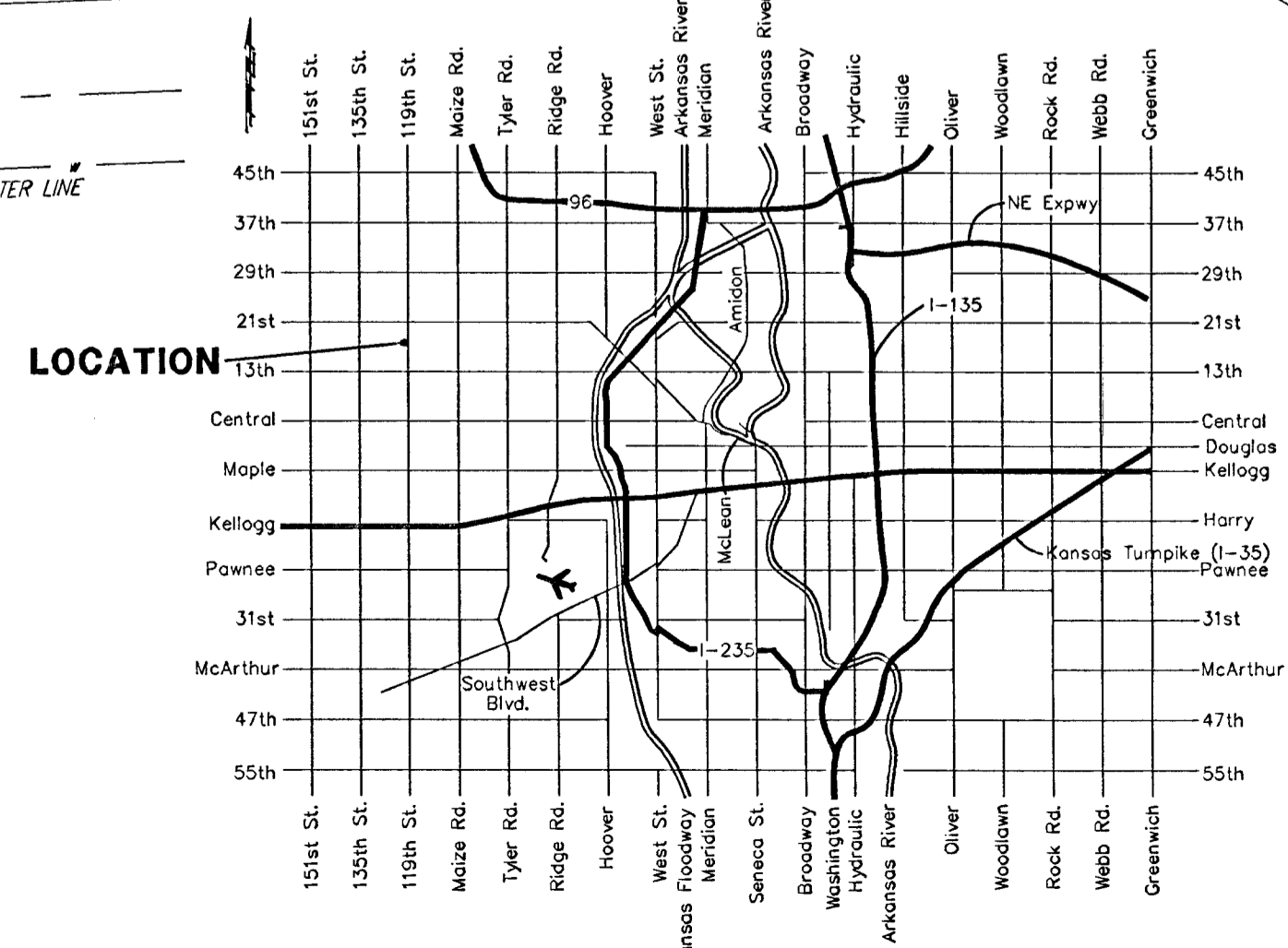
Offsite Runoff  
 D.A. = 5.32 ac.  
 C = .40 (Developed)  
 Q<sub>s</sub> = 8.2 cfs  
 Q<sub>10</sub> = 16 cfs

Offsite Runoff  
 D.A. = 4.8 ac.  
 C = .40 (Existing)  
 Q<sub>s</sub> = 7.4 cfs  
 Q<sub>10</sub> = 14 cfs

Offsite Runoff  
 D.A. = 1.6 ac.  
 C = .54 (Existing)  
 Q<sub>s</sub> = 3.3 cfs  
 Q<sub>10</sub> = 6.4 cfs

- = #4 REBAR W/ "BAUGHMAN" CAP (FOUND)
- = #4 REBAR W/ "BAUGHMAN" CAP (SET)
- ⊙ = #4 REBAR W/ "R&G" CAP (FOUND)
- = 1/2" IRON W/ "ARMSTRONG" CAP (FOUND)
- = 2" IRON (FOUND)

- EB □ = Electric Box
- FH ○ = Fire Hydrant
- MB □ = Mail Box
- OA — = Guy Anchor
- PP □ = Power Pole
- Sign ○ = Sign
- SSMH ● = Sanitary Sewer Manhole
- SWB Ped ○ = Southwestern Bell Pedestal
- SWMH ● = Stormwater Sewer Manhole
- T ○ = Tree
- W ● = Cased Well
- TRM □ = Transformer



**OWNER:**  
 Larry & Sharon Van Horn  
 140 N. Hydraulic  
 Suite 800  
 Wichita, KS 67214  
 PH. (316) 265-1170

**LEGAL DESCRIPTION:**  
 South 165 feet of the east 1456.25 feet of the S 1/2 of the NE 1/4 of Sec. 12, Twp. 27-S, R-2-W, of the 6th P.M., EXCEPT the east 50 feet for road.

**BENCHMARK:**  
 City of Wichita Disc 29.60' W. and 1' N. of centerline of 119th and 17th extended.

**NOTE:** RESERVE "A" IS RESERVED FOR ACCESS EASEMENT FOR PRIVATE DRIVEWAYS, OPEN SPACE, LANDSCAPING, DRAINAGE, UTILITIES, AND THE ROADWAY EASEMENT PER FILM 771, PAGE 1.39.3.

