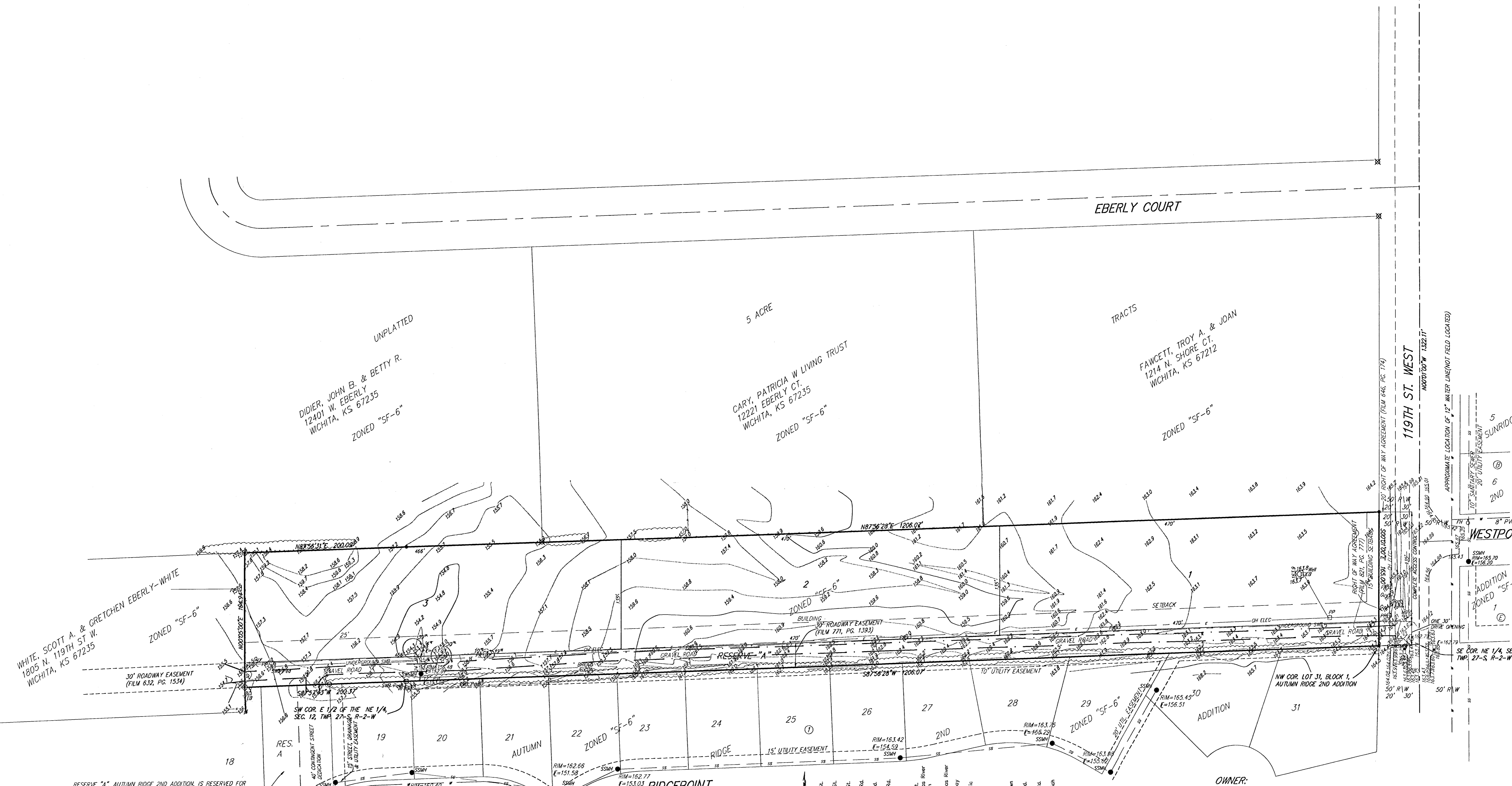


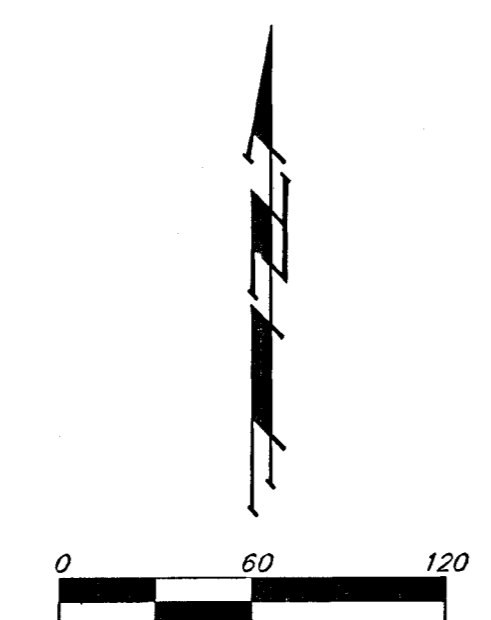
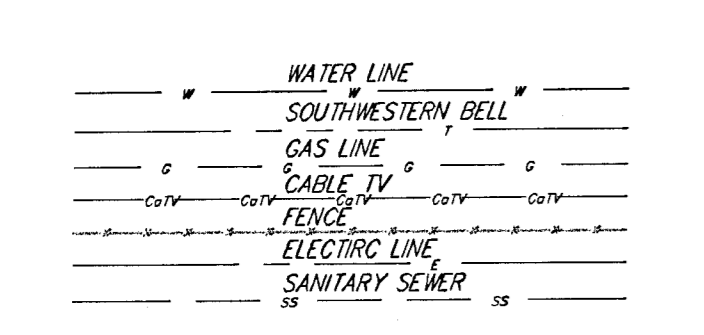
PRELIMINARY PLAT  
**VAN HORN ADDITION**  
 WICHITA, SEDGWICK COUNTY, KANSAS

NE COR. S 1/2 OF THE NE 1/4  
 SEC. 12, TWP. 27-S, R-2-W

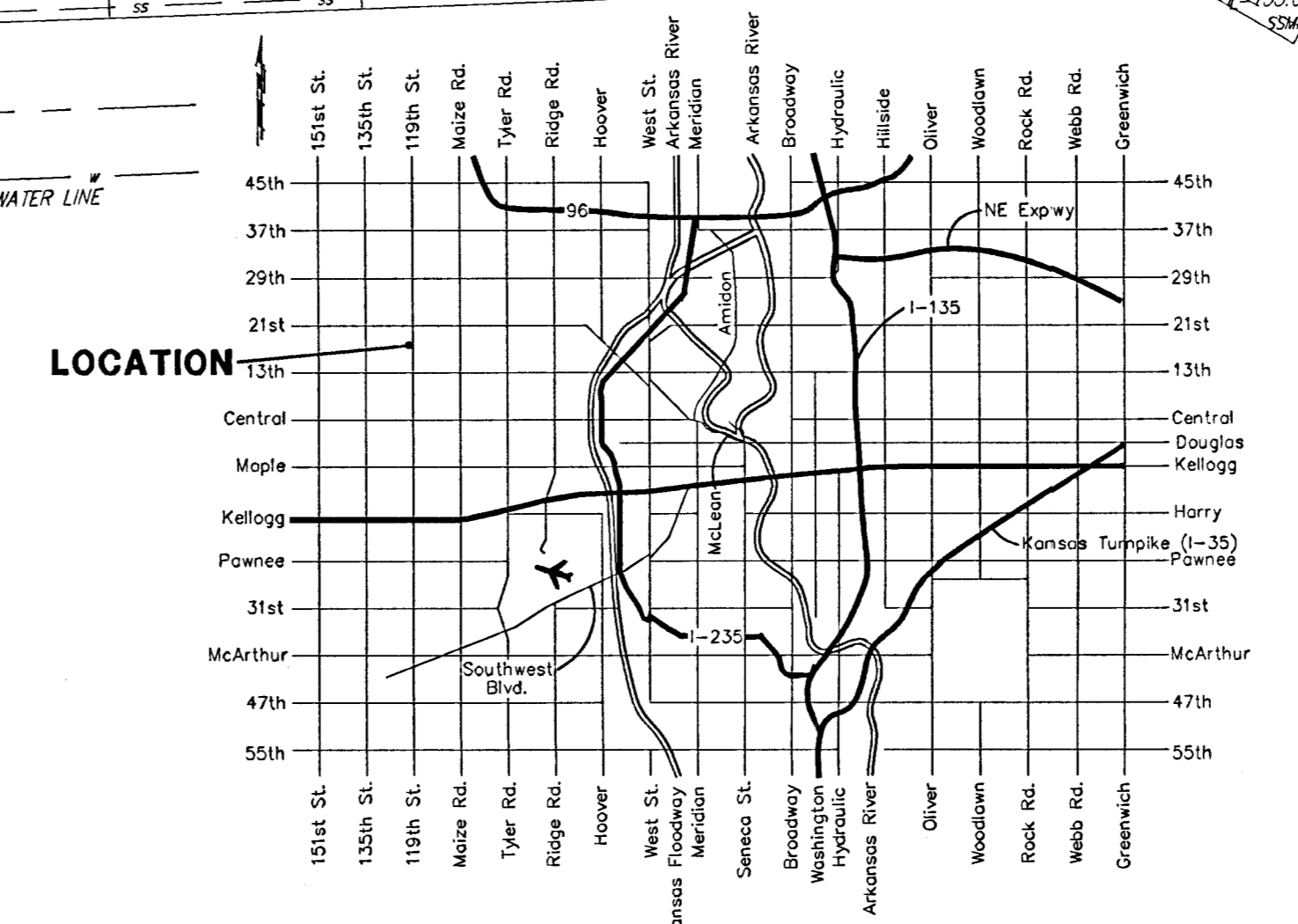


RESERVE "A". AUTUMN RIDGE 2ND ADDITION IS RESERVED FOR RURAL WATER DISTRICT NO. 4. WHEEL HOUSE AND WATER LINES, ACCESS DRIVE, LANDSCAPING, UTILITIES AS CONFINED TO EASEMENTS, AND CONTINGENT STREET DEDICATION. (PER RECORDED PLAT)

- = #4 REBAR W/ "BAUGHMAN" CAP (FOUND)
- = #4 REBAR W/ "BAUGHMAN" CAP (SET)
- ⊙ = #4 REBAR W/ "RIG" CAP (FOUND)
- ⊘ = 1/4" IRON PIPE (FOUND)
- = 1/2" IRON W/ "ARMSTRONG" CAP (FOUND)
- = 2" IRON (FOUND)
- (M) = MEASURED
- (D) = DESCRIBED
- (P) = PLATTED
- (C) = CALCULATED
- (C-P) = CALCULATED PER PLATTED INFO.
- (C-D) = CALCULATED PER DEED INFO.
- (DEED) = DEED DESCRIPTION
- (C-DEED) = CALCULATED PER TRACT DESCRIPTION



- EB □ = Electric Box
- FH ○ = Fire Hydrant
- MB □ = Mail Box
- GA — = Guy Anchor
- PP □ = Power Pole
- Sign △ = Sign
- SSM ● = Sanitary Sewer Manhole
- SWP Ped = Southwestern Bell Pedestal
- SSM ● = Stormwater Sewer Manhole
- T ○ = Tree
- Well ○ = Cased Well
- TRM □ = Transformer



**OWNER:**  
 Larry & Sharon Van Horn  
 140 N. Hydraulic  
 Suite 800  
 Wichita, KS 67214  
 PH. (316) 265-1170

**LEGAL DESCRIPTION:**  
 South 165 feet of the east 1456.25 feet of the S 1/2 of the NE 1/4 of Sec. 12, Twp. 27-S, R-2-W, of the 6th P.M., EXCEPT the east 50 feet for road.

**BENCHMARK:**  
 City of Wichita Disc 29.60' W. and 1' N. of centerline of 119th and 17th extended.

**NOTE:** RESERVE "A" IS RESERVED FOR ACCESS EASEMENT FOR PRIVATE DRIVEWAYS, OPEN SPACE, LANDSCAPING, DRAINAGE, UTILITIES, AND THE ROADWAY EASEMENT PER FILM 771, PAGE 1.39.3.