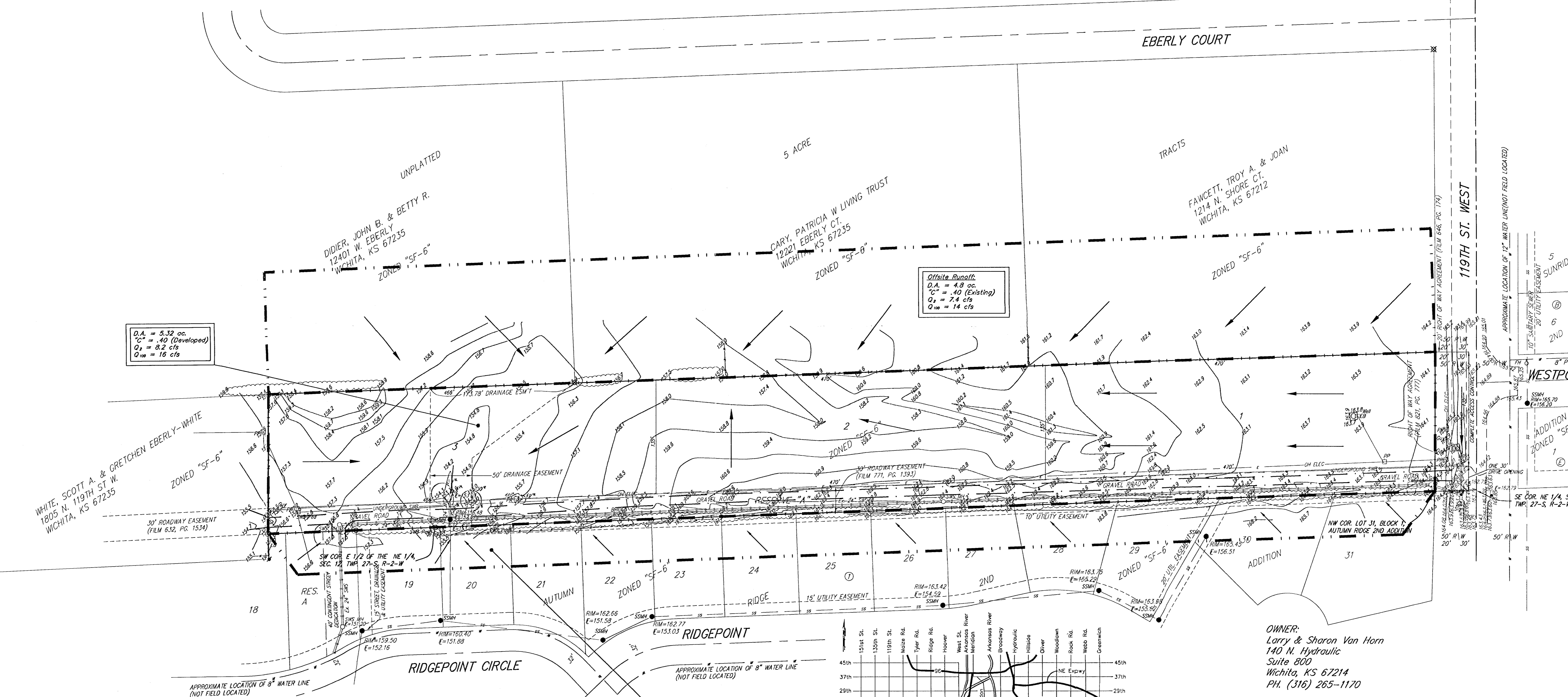


DRAINAGE CONCEPT VAN HORN ADDITION WICHITA, SEDGWICK COUNTY, KANSAS

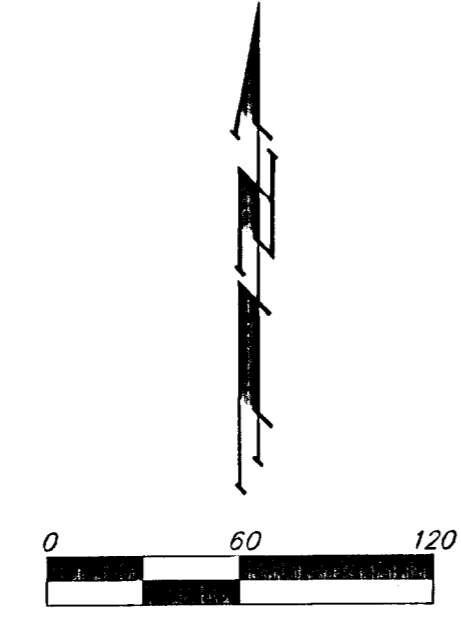
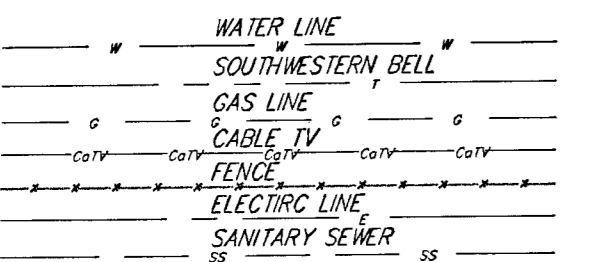


Offsite Runoff:
D.A. = 5.32 ac.
C_s = .40 (Developed)
Q_s = 8.2 cfs
Q₁₀₀ = 16 cfs

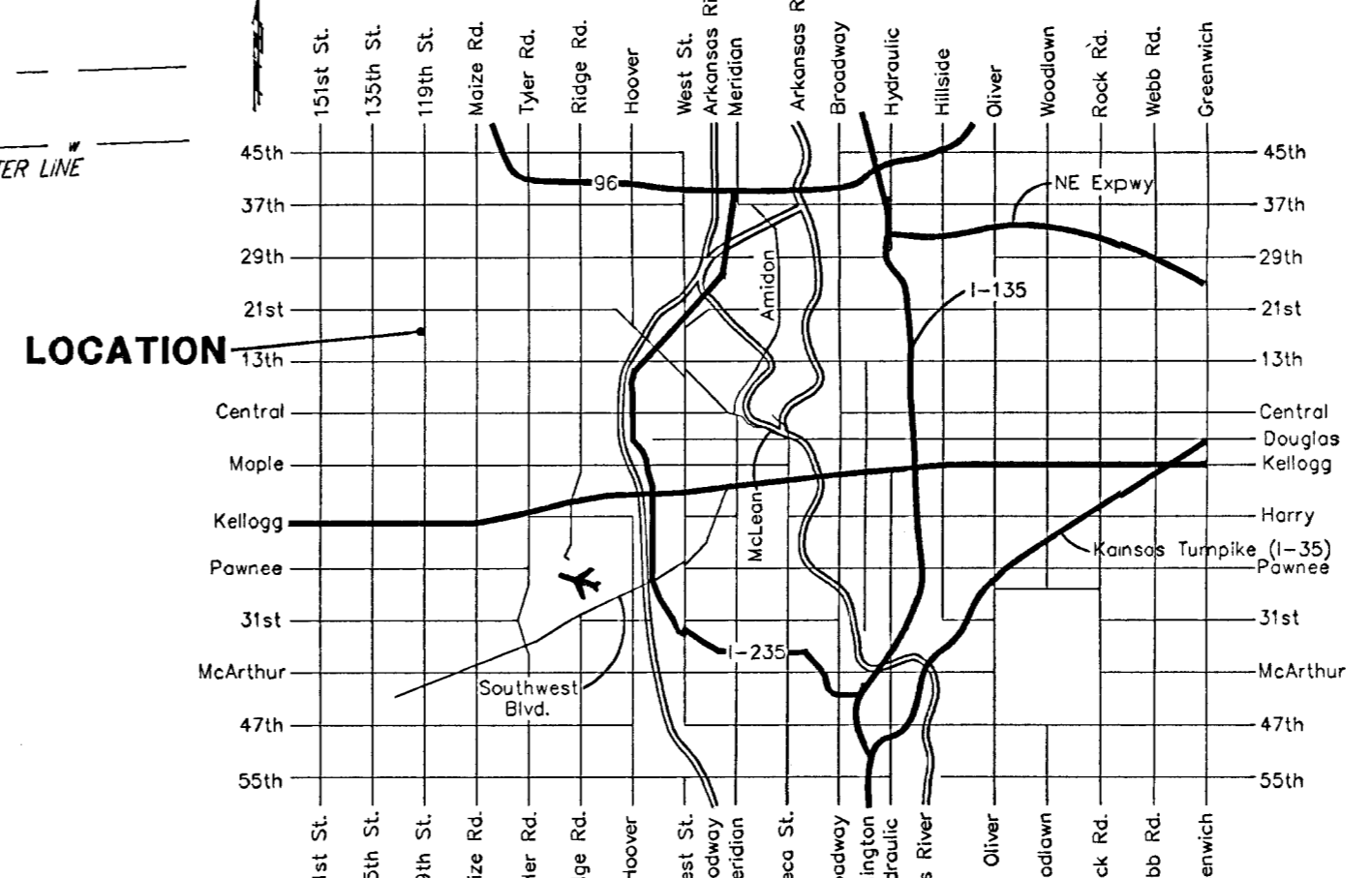
Offsite Runoff:
D.A. = 4.8 ac.
C_s = .40 (Existing)
Q_s = 7.4 cfs
Q₁₀₀ = 14 cfs

Offsite Runoff:
D.A. = 1.6 ac.
C_s = .54 (Existing)
Q_s = 3.3 cfs
Q₁₀₀ = 6.4 cfs

- ⊛ = #1 REBAR W/ "BAUGHMAN" CAP (FOUND)
- ⊙ = #1 REBAR W/ "BAUGHMAN" CAP (SET)
- ⊚ = #1 REBAR W/ "R&G" CAP (FOUND)
- ⊘ = 3/4" IRON PIPE (FOUND)
- = 1/2" IRON W/ "ARMSTRONG" CAP (FOUND)
- = 2" IRON (FOUND)
- (M) = MEASURED
- (D) = DESCRIBED
- (P) = PLATTED
- (C) = CALCULATED
- (C-D) = CALCULATED PER PLATTED INFO.
- (C-P) = CALCULATED PER PLATTED INFO.
- (DEED) = DEED DESCRIPTION
- (C-DESC) = CALCULATED PER TRACT DESCRIPTION



- EB □ = Electric Box
- PH ○ = Fire Hydrant
- MB □ = Mail Box
- GA □ = Guy Anchor
- PP □ = Power Pole
- Sign Δ = Sign
- SSMH ● = Sanitary Sewer Manhole
- SSWH ● = Stormwater Sewer Manhole
- SSWH ● = Stormwater Sewer Manhole
- T ○ = Tree
- Well ○ = Cased Well
- TRAF □ = Transformer



OWNER:
Larry & Sharon Van Horn
140 N. Hydraulic
Suite 800
Wichita, KS 67214
PH. (316) 265-1170

LEGAL DESCRIPTION:
South 165 feet of the east 1456.25 feet of the S 1/2 of the NE 1/4 of Sec. 12, Twp. 27-S, R-2-W, of the 6th P.M., EXCEPT the east 50 feet for road.

BENCHMARK:
City of Wichita Disc 29.60' W. and 1' N. of centerline of 119th and 17th extended.

NOTE: RESERVE "A" IS RESERVED FOR ACCESS EASEMENT FOR PRIVATE DRIVEWAYS, OPEN SPACE, LANDSCAPING, DRAINAGE, UTILITIES, AND THE ROADWAY EASEMENT PER FILM 771, PAGE 1.393.