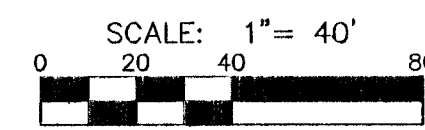
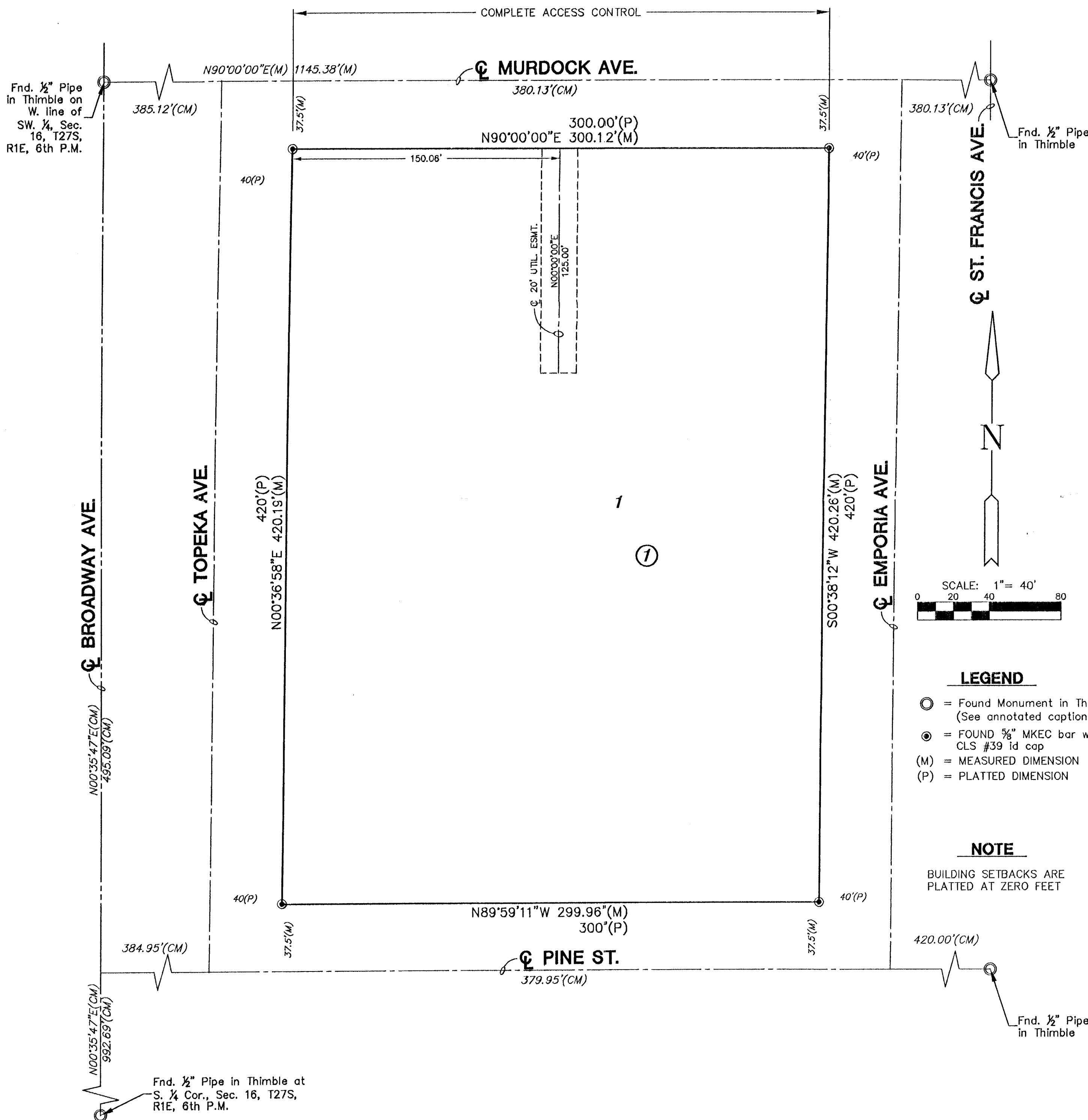


Final 8/21/03

# FINAL PLAT

## VIA CHRISTI FAMILY PRACTICE ADDITION

### AN ADDITION TO WICHITA, SEDGWICK COUNTY, KANSAS



- LEGEND**
- = Found Monument in Thimble (See annotated caption for type)
  - ⊗ = FOUND 3/8" MKEC bar w/ CLS #39 id cap
  - (M) = MEASURED DIMENSION
  - (P) = PLATTED DIMENSION

**NOTE**  
 BUILDING SETBACKS ARE PLATTED AT ZERO FEET

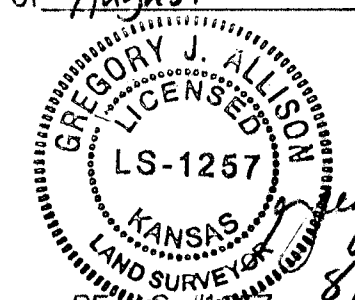
I, Gregory J. Allison, a Registered Land Surveyor in Kansas, do hereby certify that I have been in responsible charge of surveying and platting of "VIA CHRISTI FAMILY PRACTICE ADDITION" an addition to Wichita, Sedgwick County, Kansas, into a Lot and a Block, the same being accurately set forth in the accompanying plat and described herein:

A tract of land that includes all of Topeka-Pine Addition, an addition to Wichita, Kansas, TOGETHER WITH; that part of J.P. Hiltons Addition, an addition to Wichita, Sedgwick County, Kansas, lying South of Murdock Avenue, East of Topeka Avenue, North of Pine Street, and West of Emporia Avenue, said tract being more particularly described as follows:

Even Lots 40-66 inclusive, on Emporia Avenue, in J.P. Hiltons Addition to the City of Wichita, Sedgwick County, Kansas.  
 TOGETHER WITH;  
 The North 20 feet of Lot 47 and all of odd Lots 49-67 inclusive, on Topeka Avenue, in J.P. Hiltons Addition to the City of Wichita, Sedgwick County, Kansas.  
 TOGETHER WITH;  
 The East 45 feet of Lot 41, on the East 45 feet of the South 20 feet of Lot 43, on Topeka Avenue, in J.P. Hiltons Addition to the City of Wichita, Sedgwick County, Kansas.  
 TOGETHER WITH;  
 The platted Alley of lying South of Murdock Avenue and lying North of Pine Street, of said J.P. Hiltons Addition.

Grant of Easement stated on Miscellaneous Book 561, Page 79, Ingress/Egress easement established by and stated on Deed Book 870, Page 573, and all alleys, platted access control, easements, and building setbacks within the above described property are hereby vacated and replatted by virtue of K.S.A. 12-512(b).

I hereby certify that the details of this plat are correct to the best of my knowledge and belief this 17th day of August, 2003.



Gregory J. Allison, PE  
 MKEC Engineering Consultants, Inc.  
 411 North Webb Road  
 Wichita, Kansas 67206

Know all men by these presents that we the undersigned property owners of the land above set forth in the Registered Land Surveyor's Certificate, have caused the same to be surveyed and platted into a Lot, a Block, the same to be known as "VIA CHRISTI FAMILY PRACTICE ADDITION" an addition to Wichita, Sedgwick County, Kansas. Easements for the construction and maintenance of public utilities and drainage, as indicated on the accompanying plat are hereby granted to the public. A drainage plan has been developed for this plat and all drainage easements, right-of-way, or reserves shall remain at established grades or as modified with the approval of the applicable City or County Engineer, and unobstructed to allow for the conveyance of storm water. All abutters right of access to or from Murdock Avenue over and across the North line of "VIA CHRISTI FAMILY PRACTICE ADDITION," are hereby granted to the appropriate governing body.

Via Christi Regional Medical Center, Inc.

*Randy Nyp*  
 Randy Nyp, President and C.E.O.

STATE OF KANSAS, SEDGWICK COUNTY} ss.

This instrument was acknowledged before me on 20th day of August, 2003, by Randy Nyp, President and CEO, Via Christi Regional Medical Center, Inc.

IN WITNESS WHEREOF, I have hereunto set my hand and affixed my official seal, the day and year last above written.



*Geraldine E. Johnson*  
 Notary Public

My Term Expires: August 28, 2007

This plat of "VIA CHRISTI FAMILY PRACTICE ADDITION" has been submitted to and approved by the Wichita-Sedgwick County Metropolitan Area Planning Commission, Wichita, Kansas.

Dated this \_\_\_ day of \_\_\_, 2003.

WICHITA-SEDGWICK COUNTY METROPOLITAN PLANNING COMMISSION

\_\_\_\_\_  
 Bernard A. Hentzen, Chair

\_\_\_\_\_  
 John L. Schlegel, Secretary

This plat approved and all dedications shown thereon, if any, accepted by the City Council of the City of Wichita, Kansas, this \_\_\_ day of \_\_\_, 2003.

At the direction of the City Council.

\_\_\_\_\_  
 Carlos Mayans, Mayor

\_\_\_\_\_  
 Pat Graves, City Clerk

Entered on transfer record this \_\_\_ day of \_\_\_, 2003.

\_\_\_\_\_  
 Don Brace, County Clerk

STATE OF KANSAS )  
 )ss:  
 SEDGWICK COUNTY )

This is to certify that this instrument was filed for record in the Register of Deeds office this \_\_\_ day of \_\_\_, 2003 at \_\_\_ o'clock M; and is duly recorded.

\_\_\_\_\_  
 Bill Meek, Register of Deeds

\_\_\_\_\_  
 Linda Kizzire, Deputy

Reviewed in accordance with K.S.A. 58-2005 on this \_\_\_ day of \_\_\_, 2003.

\_\_\_\_\_  
 Deputy County Surveyor

Tricia L. Robello, LS #1246  
 Deputy County Surveyor  
 Sedgwick County, Kansas



© 2003 MKEC Engineering Consultants, Inc. All Rights Reserved. 8/17/2003 10:14:03 AM DDT