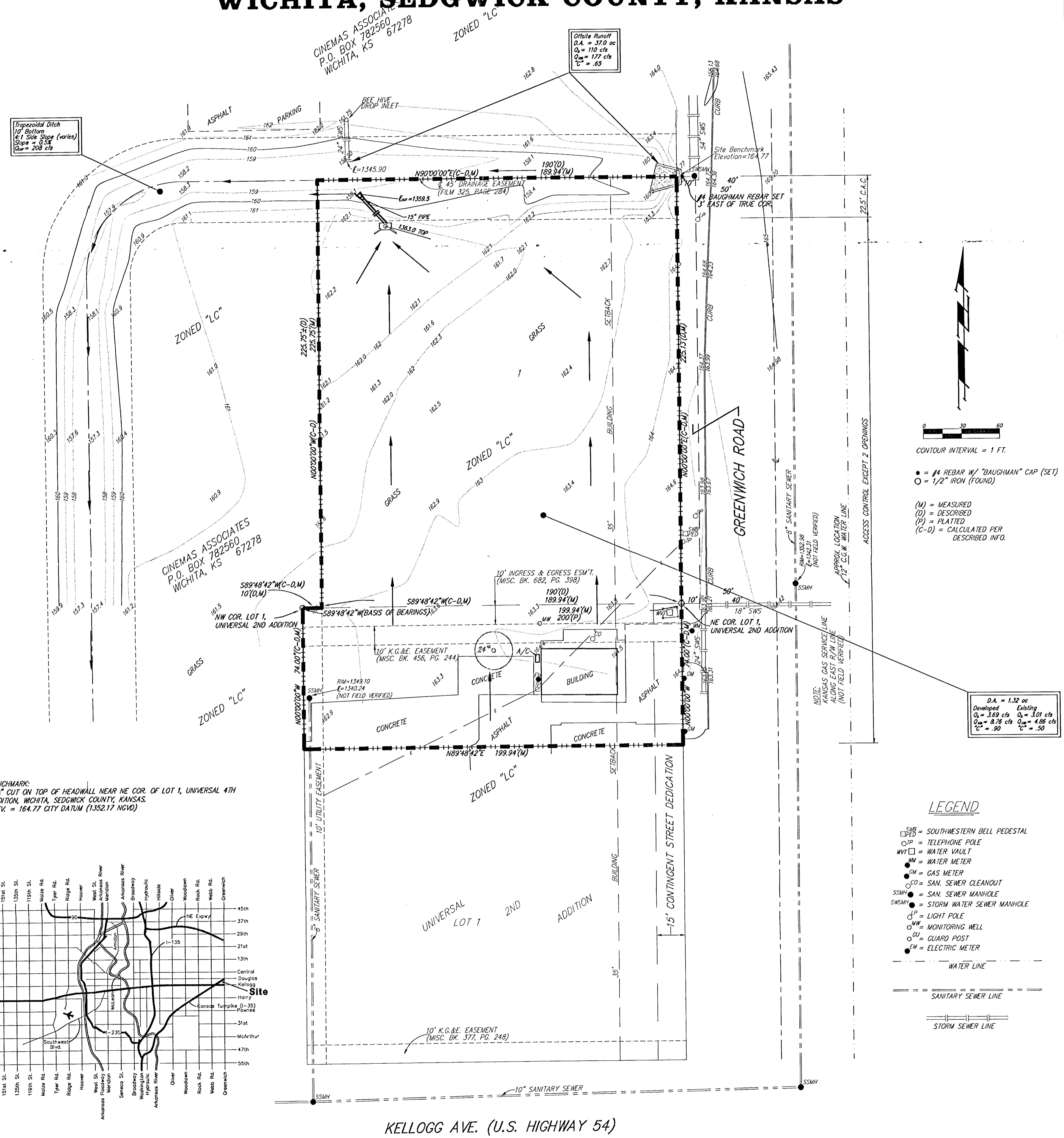


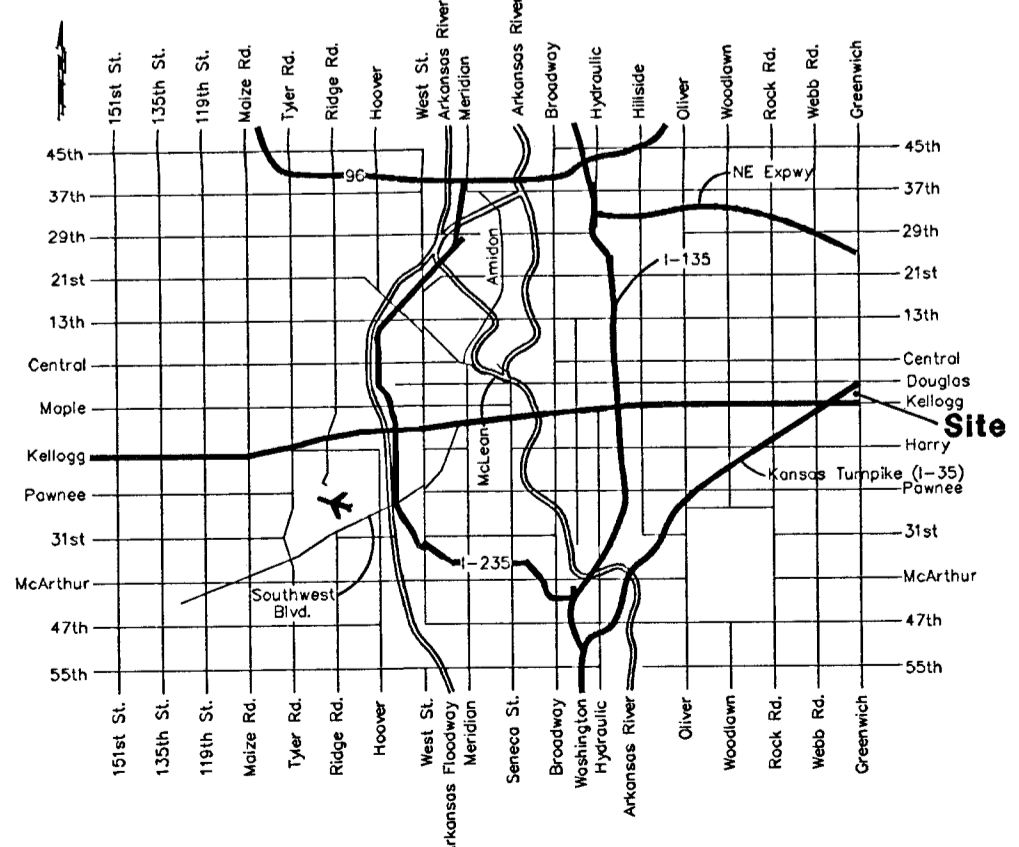
# DRAINAGE PLAN

## UNIVERSAL 4TH ADDITION

### WICHITA, SEDGWICK COUNTY, KANSAS

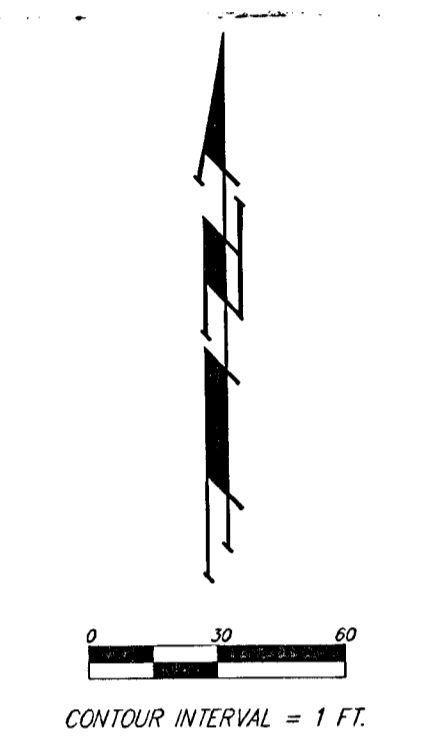


**BENCHMARK**  
 CUT ON TOP OF HEADWALL NEAR NE COR. OF LOT 1, UNIVERSAL 4TH ADDITION, WICHITA, SEDGWICK COUNTY, KANSAS.  
 ELEV. = 164.77 CITY DATUM (1352.17 NGVD)



VICINITY MAP

KELLOGG AVE. (U.S. HIGHWAY 54)



- = #4 REBAR W/ "BAUGHMAN" CAP (SET)
- = 1/2" ROD (FOUND)
- (M) = MEASURED
- (D) = DESCRIBED
- (P) = PLATTED
- (C-D) = CALCULATED PER DESCRIBED INFO.

**LEGEND**

- SPB = SOUTHWESTERN BELL PEDESTAL
- OP = TELEPHONE POLE
- WV = WATER VAULT
- WM = WATER METER
- GM = GAS METER
- SC = SAN. SEWER CLEANOUT
- SMH = SAN. SEWER MANHOLE
- SWSMH = STORM WATER SEWER MANHOLE
- LP = LIGHT POLE
- MW = MONITORING WELL
- CP = CURB POST
- EM = ELECTRIC METER
- = WATER LINE
- = SANITARY SEWER LINE
- = STORM SEWER LINE

D.A. = 1.32 cc  
 Developed  $Q_p = 1.69$  cfs  $Q_s = 1.01$  cfs  
 $Q_m = 0.76$  cfs  $Q_{10} = 4.88$  cfs  
 $C_p = .20$   $C_s = .20$