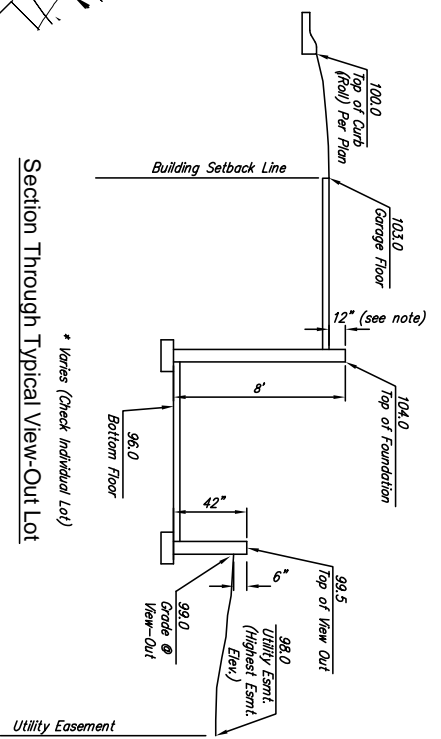
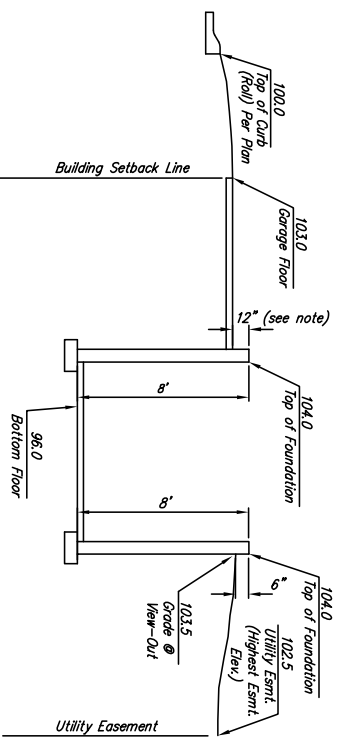
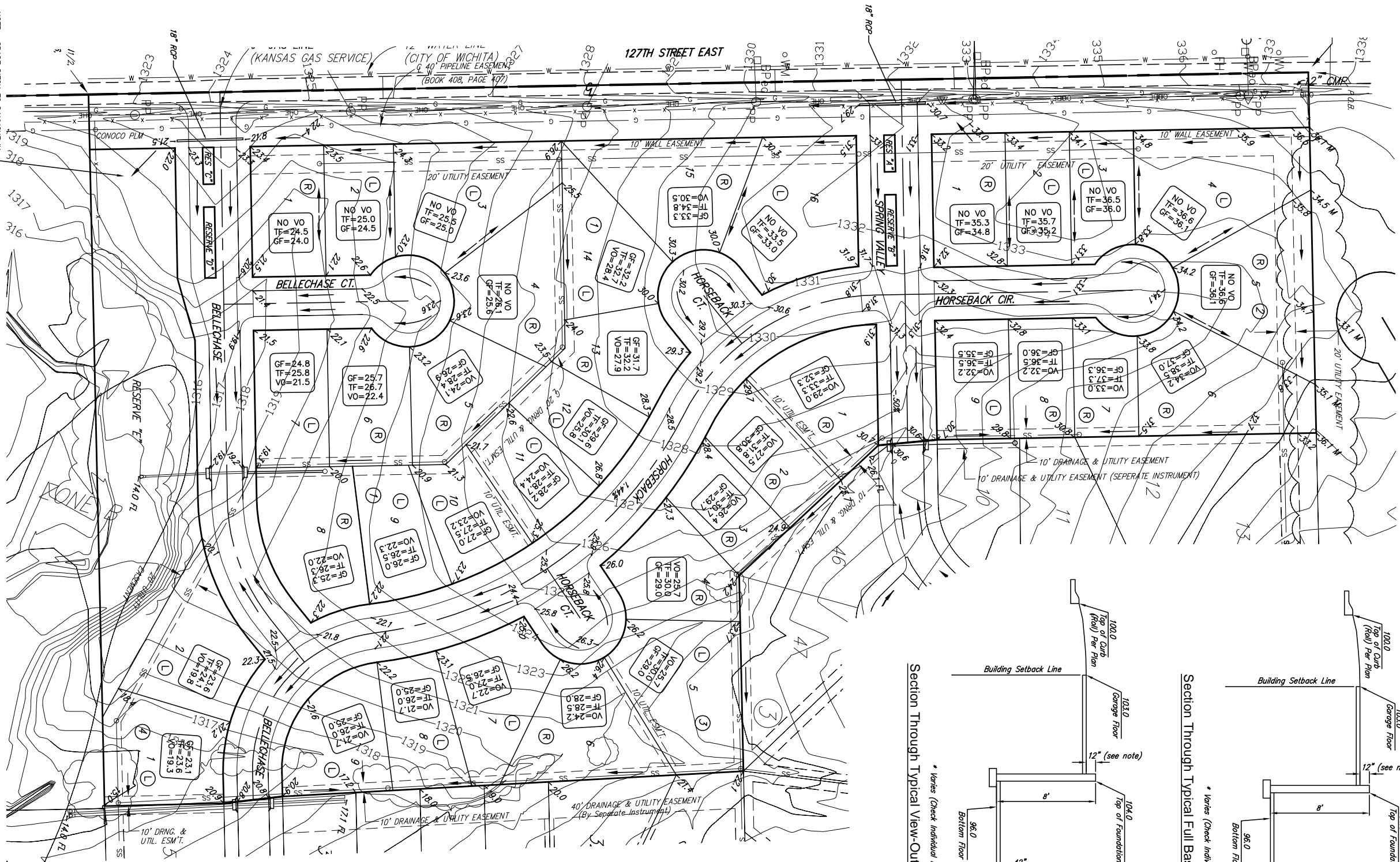


# BELLECHASE

## Subdivision Grading Plan

Wichita, Sedgwick County, Kansas



- (R) Garage Right Recommended
- (L) Garage Left Recommended
- (WO) Walk-Out Optional
- \* Extra Steps Required for Viewout

NOTE: RIGHT AND LEFT DESIGNATIONS ARE RECOMMENDATIONS ONLY. BUILDER CAN VARY GARAGE ORIENTATIONS.

NOTE: GRADE DITCH TO DAYLIGHT IN AREA INDICATED PROVIDE EROSION CONTROL MAT OR RIP-RAP AS NECESSARY TO PREVENT EROSION.

BENCH MARK IN SOUTH FACE OF POWER POLE 29' SOUTH SOUTHEAST OF THE WEST QUARTER CORNER OF SEC. 26, T21S, R2E ELEV.=1337.46 (NAD83)

**LEGEND**  
 Proposed Corner Grade  
 G=63.5 Proposed Garage Floor  
 TF=70.0 Proposed Top of Foundation  
 VO=65.7 Proposed Viewout Elevation

REVISED Dec. 3, 2007

### BELLECHASE GRADING PLAN WICHITA, KANSAS

**Ruggles & Bohm, F.A.**  
 Engineering, Surveying, Land Planning  
 924 North Main  
 Wichita, Kansas 67203  
 www.rbhkansas.com

PROJECT NUMBER: \_\_\_\_\_  
 DRAWING FILE: \_\_\_\_\_  
 Grading Plan (Grading Plan)

DESIGN	KML
DRAWN	MJP
REVIEW	
DATE	July 30, 2007
SHEET	1
OF	1