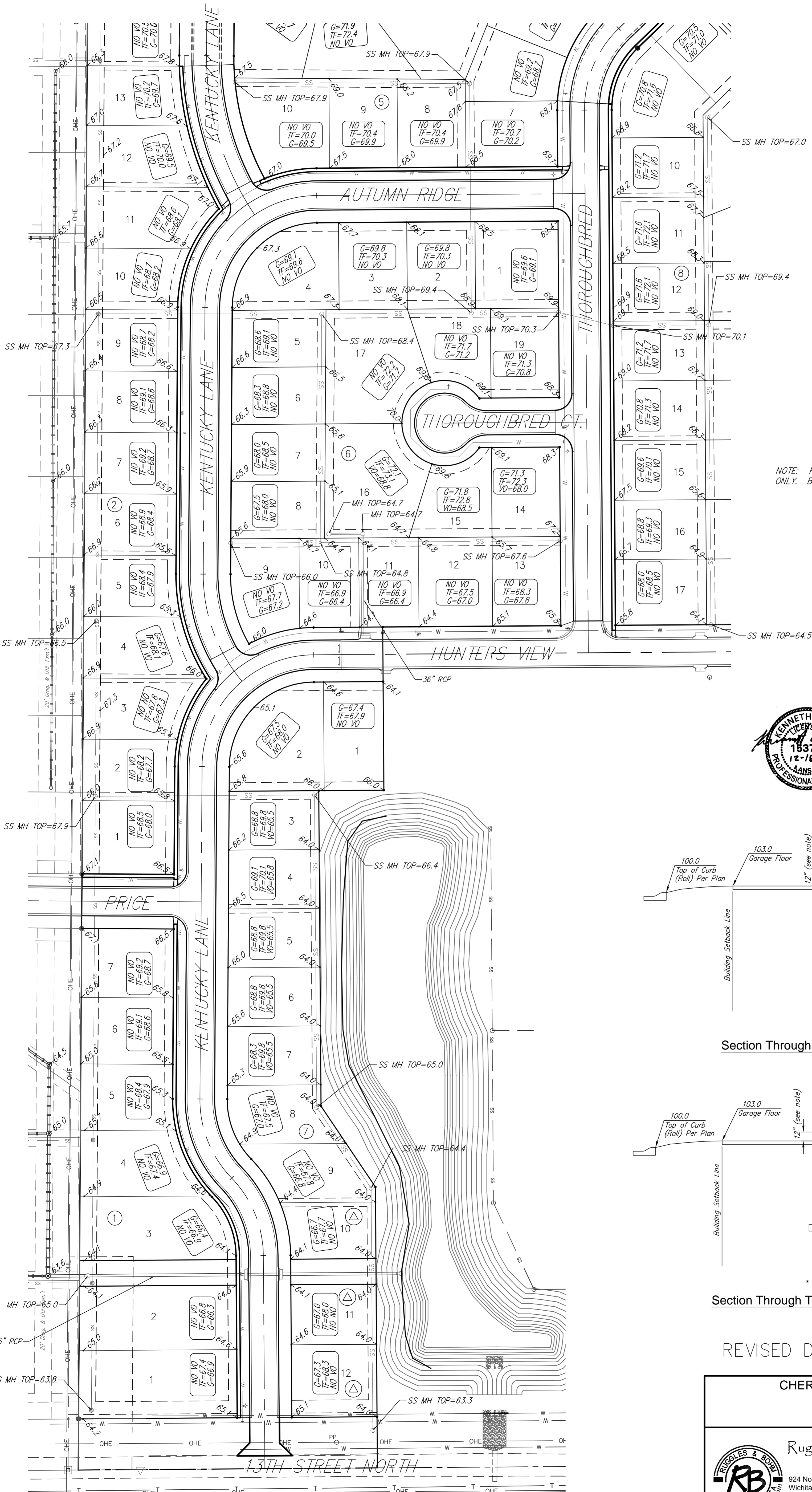


CHERYL'S HOLLOW 2ND ADDITION

Phase 1 Grading Plan

Wichita, Sedgwick County, Kansas



BENCH MARK: COW BENCHMARK AT THE SOUTHWEST CORNER OF INTERSECTION OF 135TH ST. W. AND 13TH ST. N., EAST SIDE OF CONC. BASE FOR HLP 30'± S. OF CENTER LINE AND 35'± W. OF CENTER LINE ELEV.=1355.65 (M.S.L.)

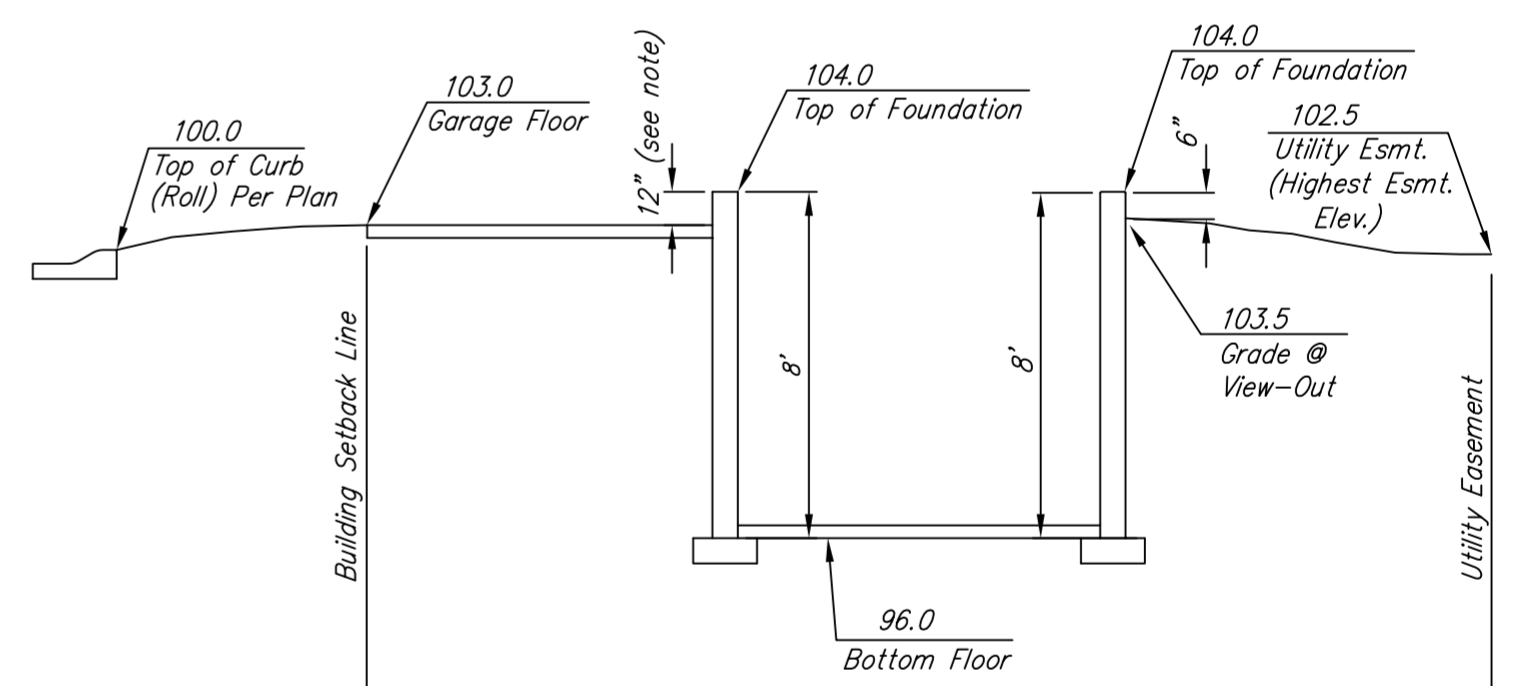
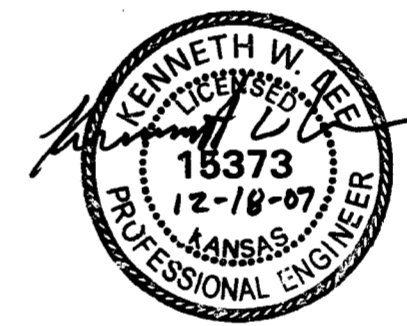
ON-SITE BENCH MARK: R.R. SPIKE ON NORTH FACE OF HIGHLINE POWER POLE 131 FEET WEST AND 28 FEET SOUTH OF THE S.E. CORNER, W₂ SE₂ SEC. 11, T27S, R2W ELEV.=1365.16 (M.S.L.)

NOTE: RIGHT AND LEFT DESIGNATIONS ARE RECOMMENDATIONS ONLY. BUILDER CAN VARY GARAGE ORIENTATIONS.

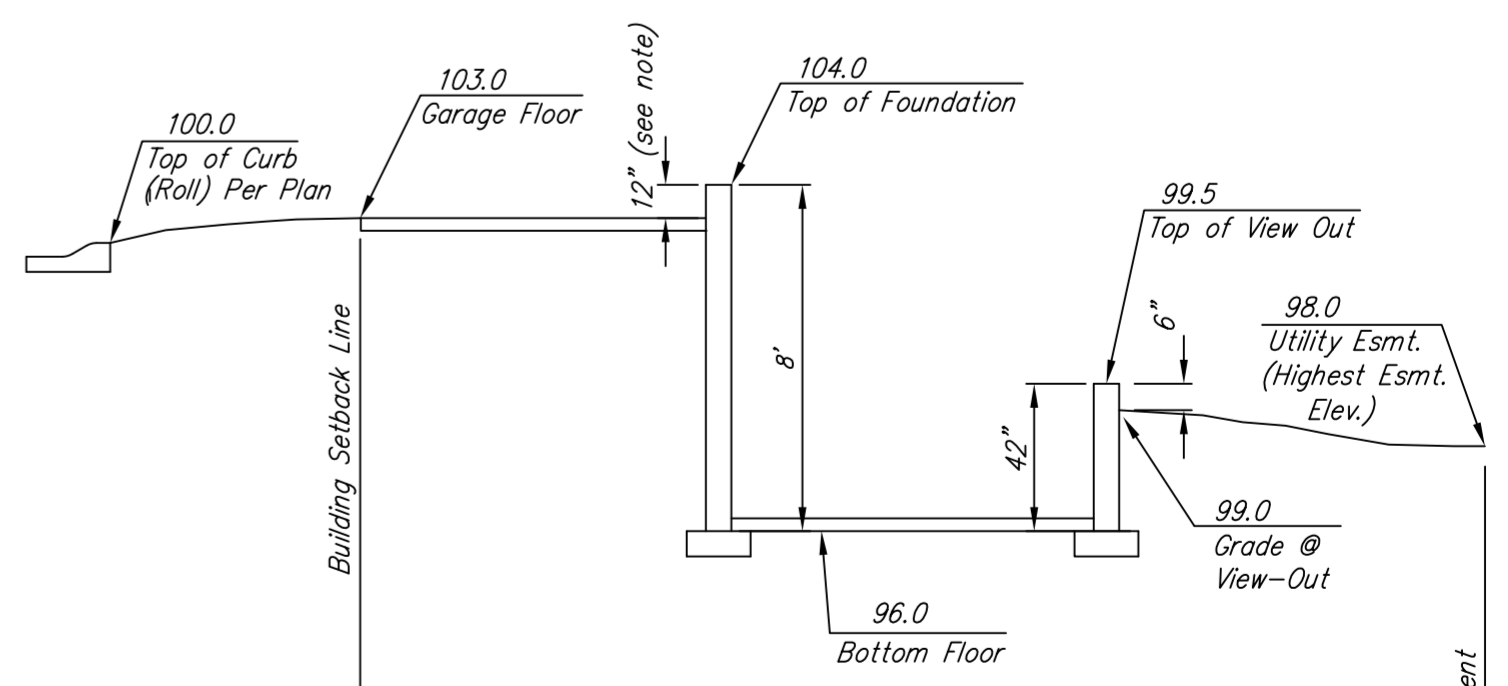
LEGEND

- XXX Proposed Corner Grade
- G=69.5 Proposed Garage Floor
- TF=70.0 Proposed Top of Foundation
- VO=65.7 Proposed Viewout Elevation

⊙ BECAUSE OF SHALLOW SEWER TF MAY BE DROPPED TO 1367.0 IF BI-LEVEL HOUSE PLAN IS USED.



Section Through Typical Full Basement



Section Through Typical View-Out Lot

REVISED December 18th, 2007

CHERYL'S HOLLOW 2ND ADDITION GRADING PLAN WICHITA, KANSAS		DESIGN KWL
		DRAWN MLP
Ruggles & Bohm, P.A. Engineering, Surveying, Land Planning 924 North Main Wichita, Kansas 67203 www.rbkansas.com		REVIEW
(316) 264-8008 (316) 264-4621 fax E-mail: info@rbkansas.com		UTILITY
DRAWING FILE Grading Plan {Grading Plan}	PROJECT NUMBER	DATE Dec. 18, 2007
		SHEET 1 of 1