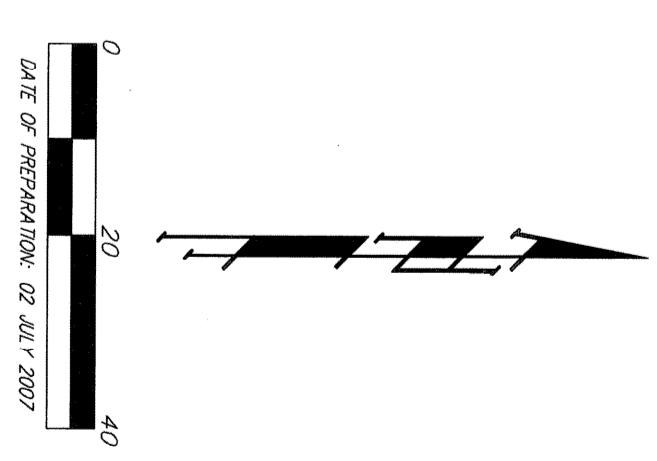
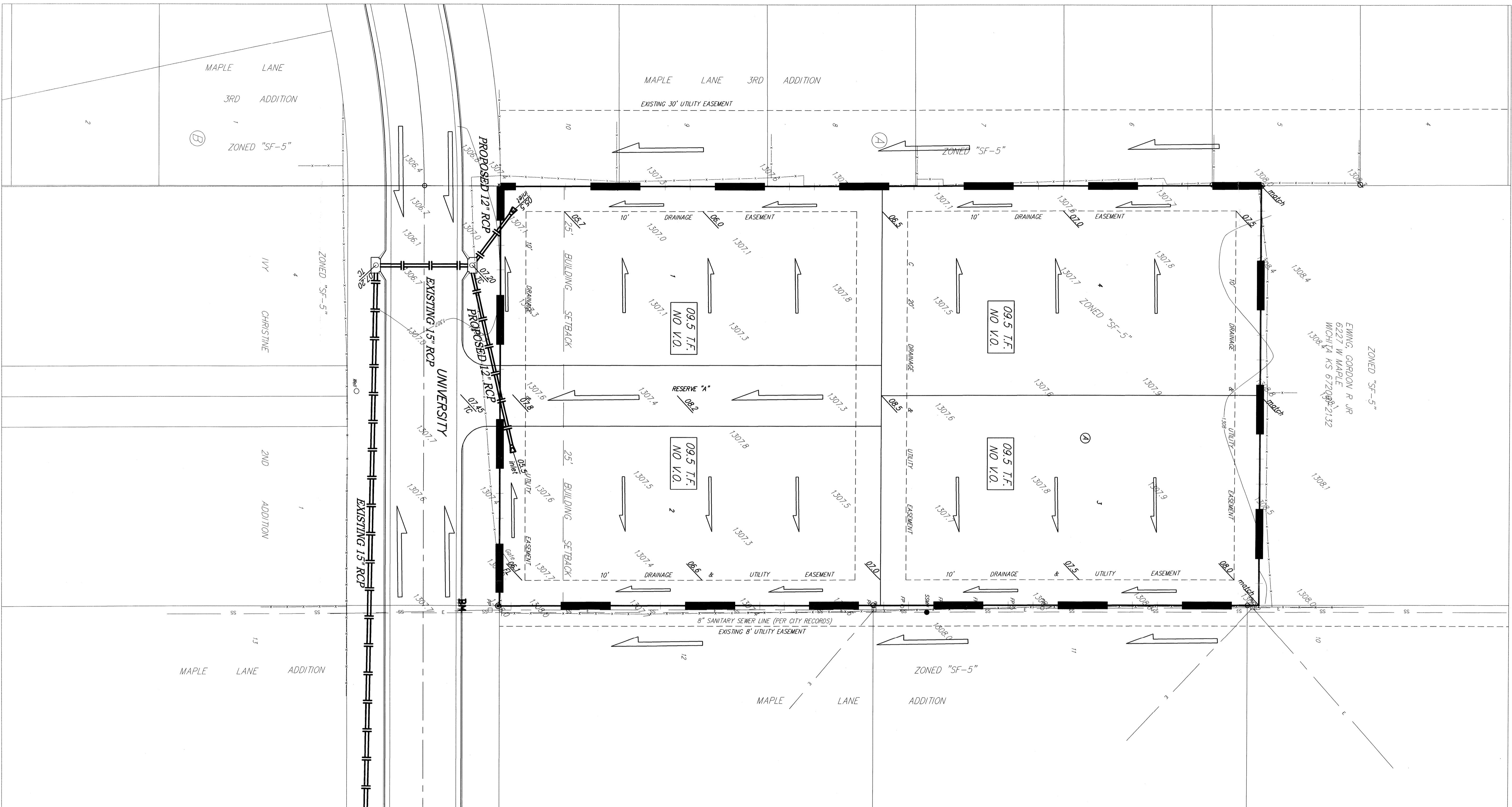


DRAINAGE & GRADING PLAN

KING'S COURT ADDITION

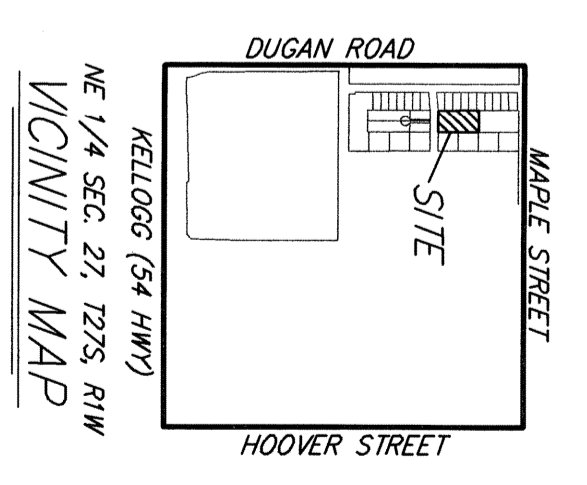
WICHITA, SEDGWICK COUNTY, KANSAS



DRAWN:
 GREGORY RUSBY ETAL
 WICHITA, KS 67212-1971

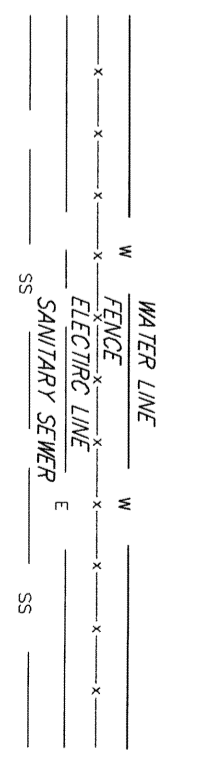
LEGAL DESCRIPTION:
 THE SOUTH HALF OF THE NORTH HALF OF THE EAST 3 ACRES OF THE WEST 15 ACRES OF THE NORTH HALF OF THE RANGE 24S, WEST OF THE SIXTH PRINCIPAL MERIDIAN, SEDGWICK COUNTY, KANSAS, EXCEPT THE SOUTH 30 FEET HEREOF, DEDICATED FOR STREET PURPOSES.

BENCHMARK:
 HALLROAD S&W N.S. SIDE OF POWER POLE 15.8' S. OF S.W. COR. LOT 12, MAPLE LANE ADD. (ELEVATION = 1308.20 (IND. 29))

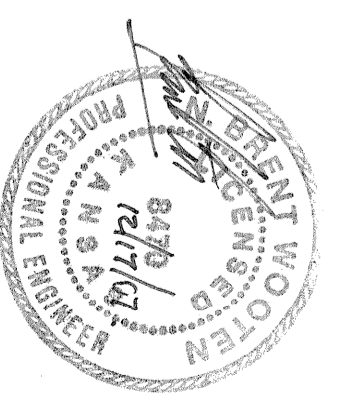


- = #4 REBAR W/ "BAUGHMAN" CAP (ROUND)
- = #4 REBAR W/ "309" CAP (ROUND)
- = #1 ANGLE IRON (ROUND)
- = #1/2" IRON (ROUND)
- = 1/2" IRON (ROUND)

- SWW = Sanitary Sewer Manhole
- ppp = Manhole
- wp = Water Pipe
- fp = Fire Hydrant
- fh = Fire Hydrant
- fp = Fire Hydrant
- pp = Power Pole
- tt = Tree



Area = 1.1 acres	
Soil Type = B	
Tc = 15 min	
EXISTING	DEVELOPED
CN = 61	CN = 75
Q2 = 0.6 cfs	Q2 = 1.8 cfs
Q3 = 1.3 cfs	Q3 = 2.8 cfs
Q10 = 2.0 cfs	Q10 = 3.6 cfs
Q100 = 4.5 cfs	Q100 = 6.8 cfs



This site lies within FEMA Zone X Shaded per FEMA FIRM Panel 345 of 700, for Sedgwick County, Kansas effective February 2, 2007.

NOTE: Existing SWS and street per Street Paving Improvements to University Street per City of Wichita Project #472 84299.

DRAINAGE & GRADING PLAN
KING'S COURT ADDITION

B Baughman Company, P.A.
 315 E. 18th St., Wichita, KS 67211 P: 316-262-2711 F: 316-262-0149
 baughman.com
 ENGINEERING | SURVEYING | PLANNING | LANDSCAPE ARCHITECTURE

REVISION D: 02 JULY 2007
 DATE OF PREPARATION: 02 JULY 2007
 PROJECT: KING'S COURT ADDITION, SEDGWICK COUNTY, KANSAS