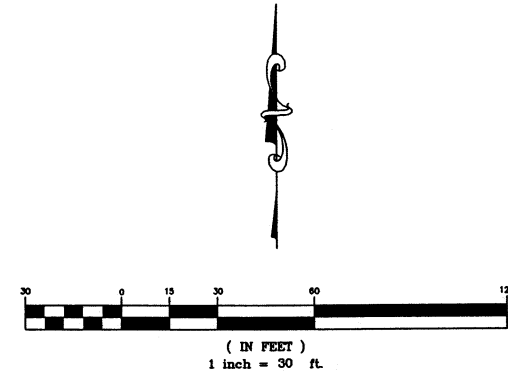
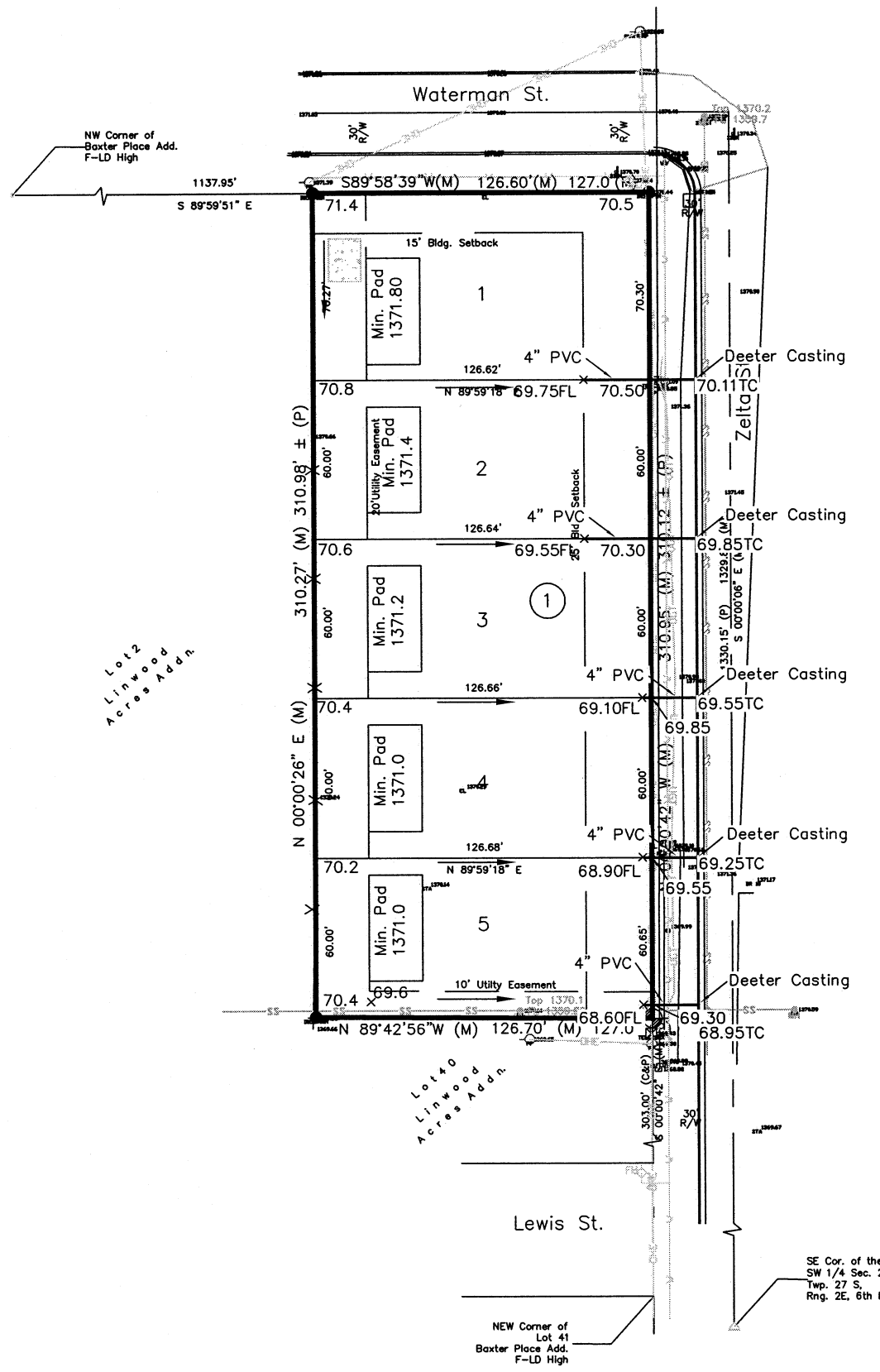


LOT GRADING PLAN LINWOOD ACRES 2nd ADDITION WICHITA, SEDGWICK COUNTY, KANSAS

Part of the SW 1/4, Section 22, Township 27 South, Range 2 East of the 6th P.M.

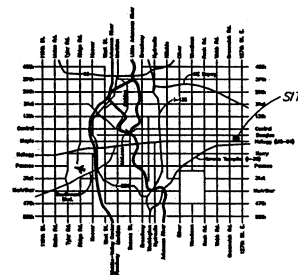


Note: Extend 4" PVC from curb to 25' setback on Lots 1 & 2, and 3 feet onto private property on Lots 3-5. Pour concrete collar on west end of pipes.

LEGEND

- Fire Hydrant
- Light Pole
- Pine Tree
- Power Pole
- Telephone Pedestal
- Tree
- Water Meter
- Water Valve
- RW Marker (found)
- 1/2" Iron Pin (found)
- 5/8" Rebar (set) KEMPA CLS #157

Benchmark:
COW Bench mark 32' West a 38' North of Centerline of Zelta and Douglas Intersection.
Elev. 1357.29 MSL



LOCATION MAP

Existing Site Drainage								
Block #	Acres	Tc	C5	15	C100	1100	Q5	Q100
Proposed Plat	0.91	15 min	0.33	4.56	0.63	7.37	1.37cfs	4.23cfs

Proposed Site Drainage								
Block #	Acres	Tc	C5	15	C100	1100	Q5	Q100
Proposed Plat	0.91	15 min	0.61	4.56	0.79	7.37	2.53cfs	5.29cfs



Engineer's Note:
Site drainage calculations developed using the Rational Method for peak runoff. "C" & "T" values established from the City of Wichita Design Criteria and Documentation.

Filename: 07124 Alan Williams Plat\dwg\Alan Williams pralim plat.dwg

kemiller

engineering

516 S. Market, Wichita, KS 67202 316/264-0242