

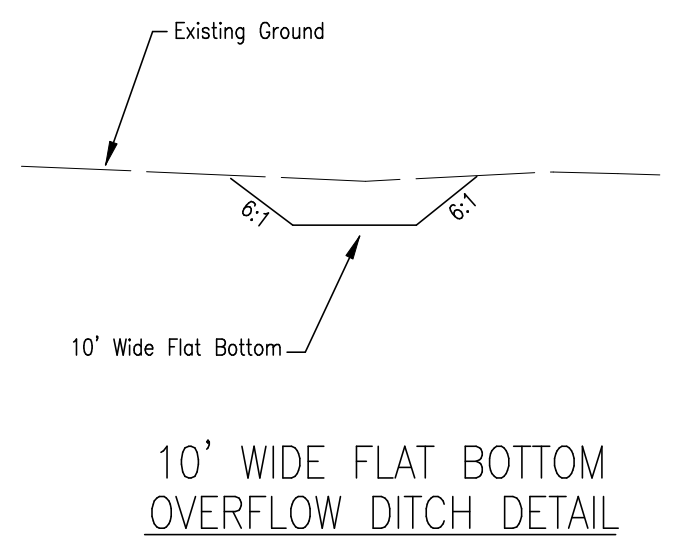
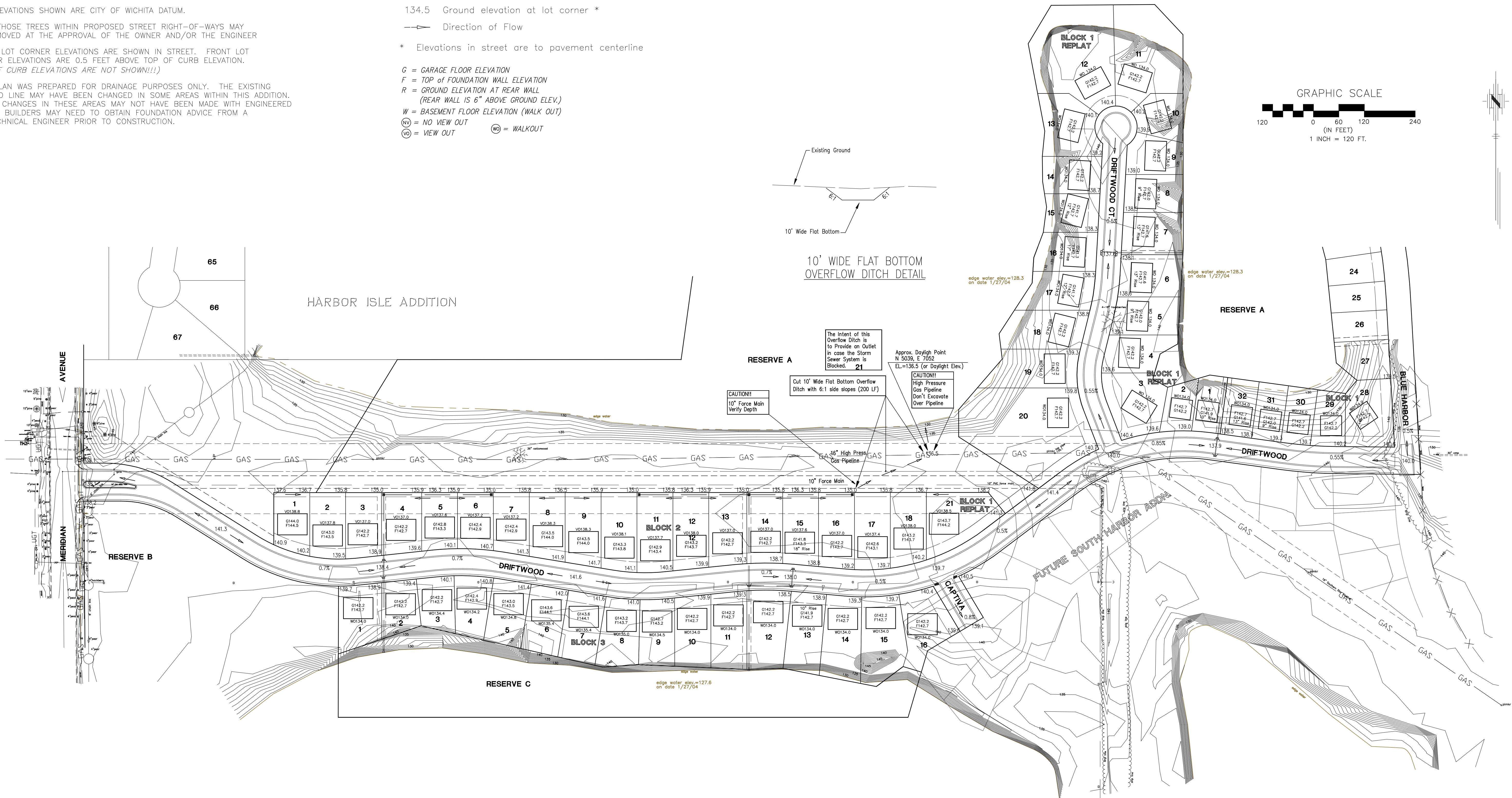
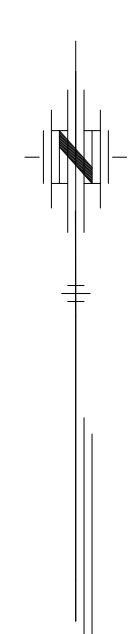
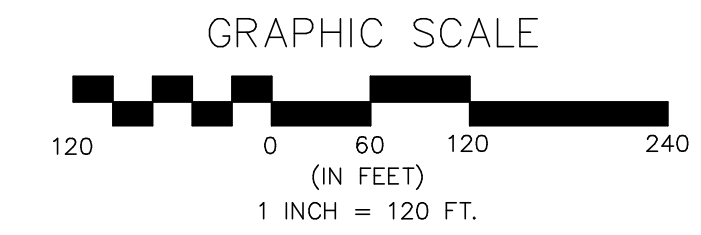
NOTES

1. ALL ELEVATIONS SHOWN ARE CITY OF WICHITA DATUM.
2. ONLY THOSE TREES WITHIN PROPOSED STREET RIGHT-OF-WAYS MAY BE REMOVED AT THE APPROVAL OF THE OWNER AND/OR THE ENGINEER
4. FRONT LOT CORNER ELEVATIONS ARE SHOWN IN STREET. FRONT LOT CORNER ELEVATIONS ARE 0.5 FEET ABOVE TOP OF CURB ELEVATION. (TOP OF CURB ELEVATIONS ARE NOT SHOWN!!!)
5. THIS PLAN WAS PREPARED FOR DRAINAGE PURPOSES ONLY. THE EXISTING GROUND LINE MAY HAVE BEEN CHANGED IN SOME AREAS WITHIN THIS ADDITION. GRADE CHANGES IN THESE AREAS MAY NOT HAVE BEEN MADE WITH ENGINEERED FILLS. BUILDERS MAY NEED TO OBTAIN FOUNDATION ADVICE FROM A GEOTECHNICAL ENGINEER PRIOR TO CONSTRUCTION.

LEGEND

- 134.5 Ground elevation at lot corner *
- Direction of Flow
- * Elevations in street are to pavement centerline
- G = GARAGE FLOOR ELEVATION
- F = TOP OF FOUNDATION WALL ELEVATION
- R = GROUND ELEVATION AT REAR WALL (REAR WALL IS 6" ABOVE GROUND ELEV.)
- W = BASEMENT FLOOR ELEVATION (WALK OUT)
- ⊖ = NO VIEW OUT ⊕ = WALKOUT
- ⊙ = VIEW OUT ⊙ = WALKOUT

CHECKED WITH STREET GRADES
SEPTEMBER 7, 2004 BY J.M.U.



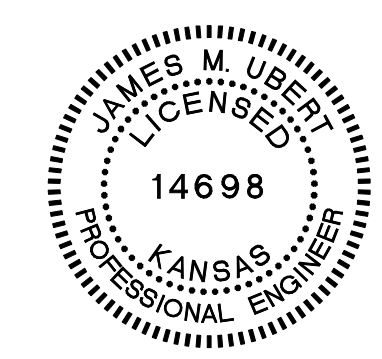
The intent of this Overflow Ditch is to provide an Outlet in case the Storm Sewer System is Blocked. 21

Approx. Daylight Point N 5039, E 7052 EL=136.5 (or Daylight Elev.)

CAUTION! High Pressure Gas Pipeline Don't Excavate Over Pipeline

Cut 10' Wide Flat Bottom Overflow Ditch with 6:1 side slopes (200 LF)

CAUTION! 10' Force Main Verify Depth



9-7-04

BENCH MARKS

City of Wichita Datum

1. " + " Cut on NW corner conc. pad at lift station, 115.4' NW of SW Cor. Sec. 19-T26S-R1E Elevation 140.14
2. Top steel "T" post set flush w/ground 4' N. of R/W corner @ SW corner of Driftwood & Driftwood Court Elevation 139.17
3. COW Bench Mark at NW corner of Meridian & Keywest 59' W. and 32.3' N. of center line both. 11.8' N. of north curb Keywest. 4.8' NW of center P.P. 23.4' SE of SE cor. conc. wall Elevation 141.96

Revision			
Approved			
Date			
No.	1	2	3

HARBOR ISLE 3RD ADDITION
STREET IMPROVEMENTS
LOT GRADING PLAN
CITY OF WICHITA, KANSAS
JAMES ARMOUR, P.E. - CITY ENGINEER

POE & ASSOCIATES, INC.
CONSULTING ENGINEERS
5940 E. Central, Suite 200 • Wichita, KS 67208-4242
Phone 316/685-4114 • FAX 316/685-4444

Designed By: J. Ubert / J. Dickman
Drawn By: J. Dickman
Poe Job No.: 1786
Date: March 2004

FINAL

Sheet
1 of 1