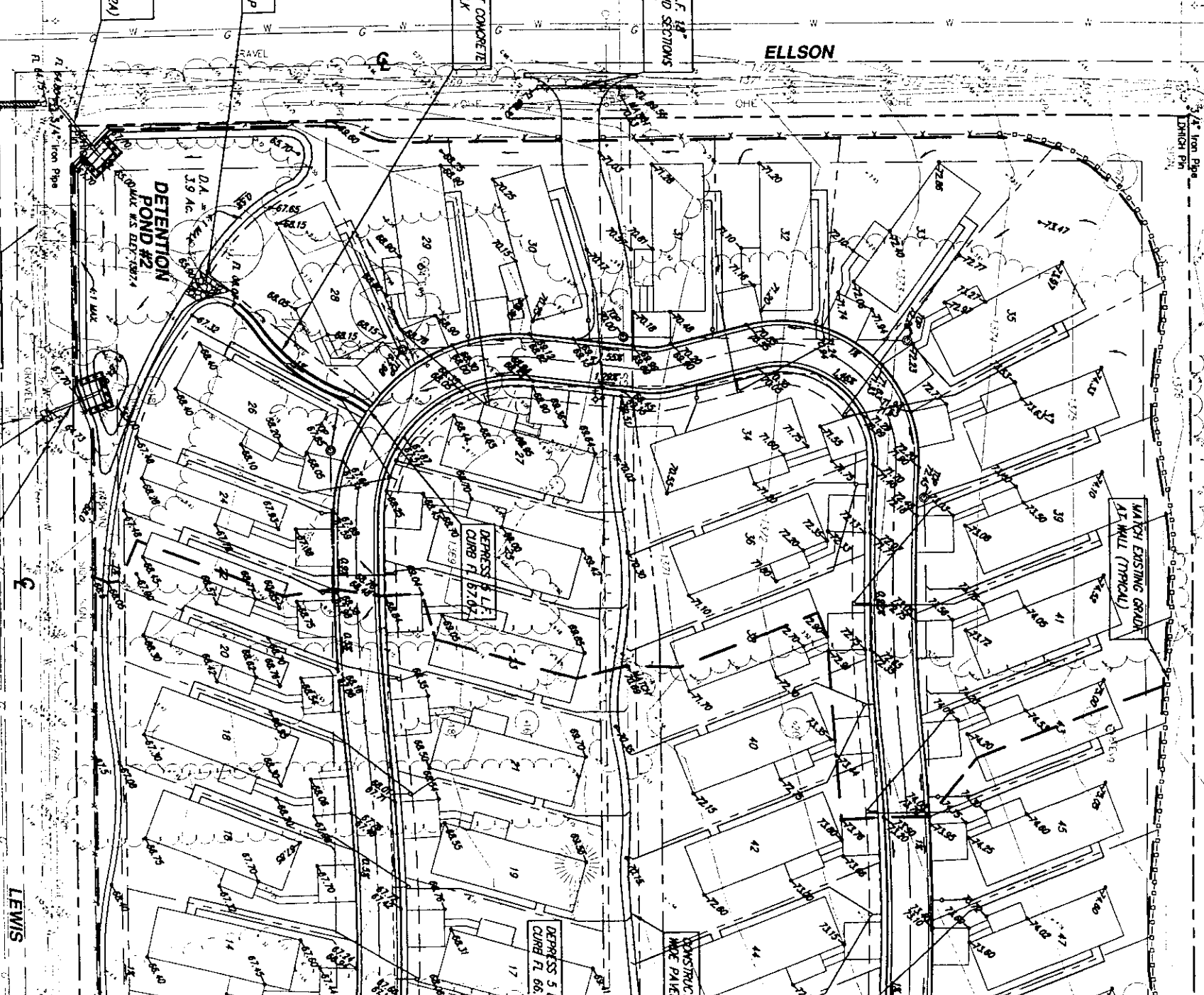


PK. Nod

3

16

ELLSON



INSTALL 51 L.F. 18" CAP INCL. END SECTIONS SEE SHEET 2

CONSTRUCT CONCRETE FLOWE MARK

PLACE LIGHT STONE RIPRAP

INSTALL 36 L.F. 18" PVC PIPE (STORM DRAIN #2A)

DETENTION POND #2

INSTALL 40 L.F. 24" RCP INCL. END SECTIONS. PLACE 4 S.Y. LIGHT STONE RIPRAP U.S. AND D.S. (STORM DRAIN #2B). RESURFACE ROADWAY AS NECESSARY WITH ROAD GRAVEL. REMOVE AND RESET STOP SIGN.

REMOVE DRIVE AND 18" CAP

INSTALL 30 L.F. 18" PVC PIPE (STORM DRAIN #2)

PLACE 4 S.Y. LIGHT STONE RIPRAP

EXISTING 18" CAP

DEPRESS 8 L.F. CURB FL. 67.07

DEPRESS 5 L. CURB FL. 66.4

CONSTRUCT NEW PAVEL

MATCH EXISTING GRAVEL AT WALL (TYPICAL)

**NOTE:**

DETENTION PONDS, RIPRAP, OUTLET WEIR AND STORM DRAIN PIPES #2, 2A AND 2B TO BE INSTALLED WITH PROJECT #1094 PPS (SEE SHEET 2).

LEWIS

REMOVE CURB, CONSTRUCT  
8" REIN. CONCRETE DRIVE  
APPROACH

CONSTRUCT 3" WIDE  
CONCRETE WALK

REMOVE (2) DRIVE APPROACHES  
CONSTRUCT CURB & GUTTER

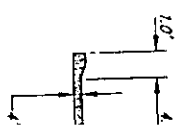
B.M. #2 "C" CUT IN TOP OF  
BAYTER PLACE ADD

NOTE: ADD 1300.00  
TO CONVERT !



SCALE 1" = 40'

SECTION I



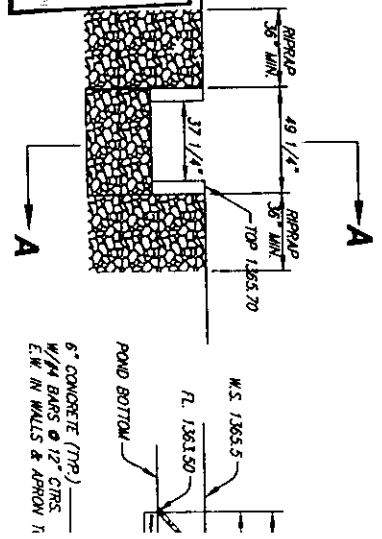
ROLL-TYPE CONCRETE  
CURB & GUTTER (EXC  
WHERE NOTED FULL CR

2 1/2% MIN  
SLOPE 2.0%

CONCRETE SIDEWALK WHERE  
INDICATED ON PLAN.  
(SLOPE 2%)

ASPHALTIC CONCRETE  
PAVEMENT

TYPICAL PAVEMENT GI



57 CONCRETE (TP)  
#4 BARS @ 12" CRS.  
E.W. IN WALLS & APRON 1

ELEVATION OUTLET WEIR SE

DETENTION POND  
OUTLET WEIR DETA

BAYTER PLACE M  
SITE GRADING AN  
WICHITA

SPRB  
SAVOY, RUGGLES  
ENGINEERING &  
CONSULTANTS  
924 NORTH MAIN  
WICHITA, KANSAS 67  
www.spri.com  
PROJECT NUMBER  
1094 PP



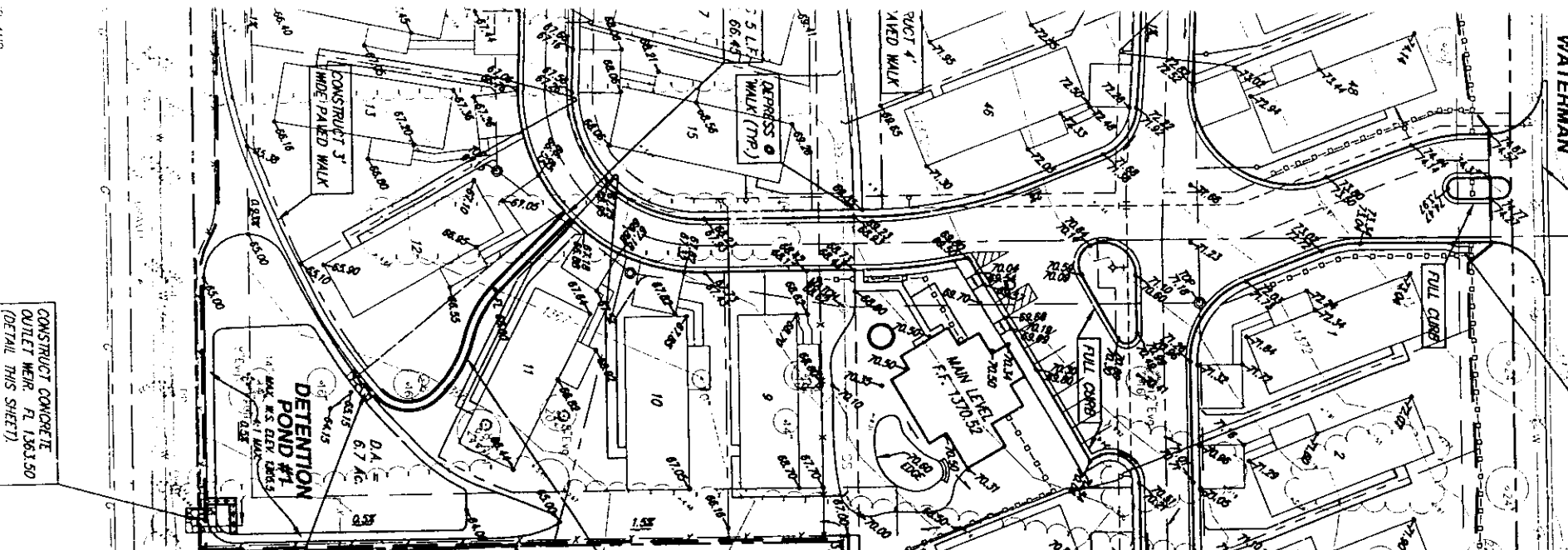
OFFICE OF CENTRAL INSPECTION  
FIELD COPY  
KEEP ON JOB SITE!  
Date: \_\_\_\_\_

CONSTRUCT CONCRETE  
FLUME/WALK

PLACE LIGHT  
STONE RIPRAP

EXISTING 23"x18" CMPA

CONSTRUCT CONCRETE  
OUTLET WEIR, FL 1.56150  
(DETAIL THIS SHEET)



CONSTRUCT 3' WIDE  
CONCRETE WALK

REMOVE (2) DRIVE APPROACHES  
CONSTRUCT CURB & GUTTER

PR. N&B



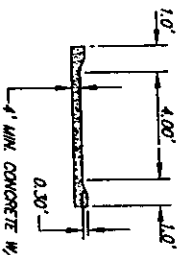
**BENCH MARKS**

B.M. #1 C.O.W. DISC 2E124 DR. & RELOOG IN CTR. MEAN 75' W  
OF SEC. COR. 6' N OF SEC. COR. 11.50' S. EDGE OF ASPHALT  
AND 52.20' W OF FIRE HYDRANT  
ELEV. 1362.10

B.M. #2 "C" CUT IN TOP OF CURB AT N.E. COR.  
BAXTER PLACE ADDITION, ELEV. 1371.45

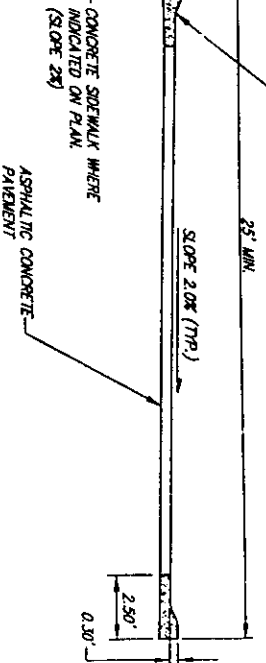
NOTE: ADD 1300.00 TO PROPOSED SPOT ELEVATIONS  
TO CONVERT TO M.S.L. DATUM.

SCALE 1" = 40'

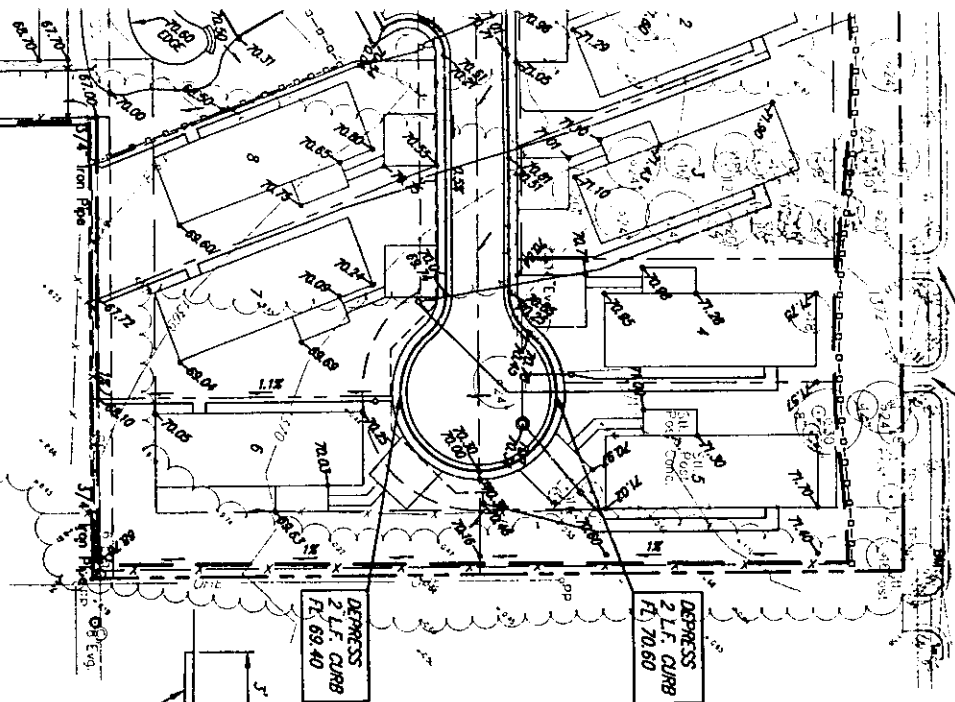


**SECTION FLUMEWALK**

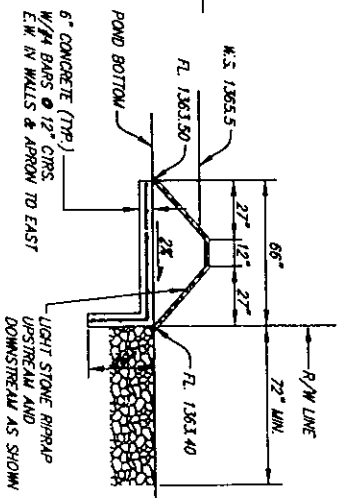
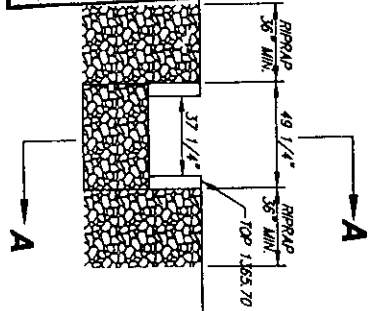
ROLL-TYPE CONCRETE  
CURB & GUTTER (EXCEPT  
WHERE NOTED FULL CURB)



**TYPICAL PAVEMENT GRADING SECTION**



OFFICE OF CENTRAL INSPECTION  
**FIELD COPY**  
(KEEP ON JOB SITE)  
Date \_\_\_\_\_



**ELEVATION OUTLET WEIR SECTION A-A**

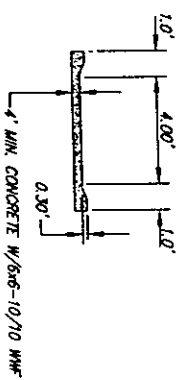
**DETENTION POND #1  
OUTLET WEIR DETAILS**

**BAXTER PLACE MOBILE HOME PARK  
SITE GRADING AND DRAINAGE PLAN  
WICHITA, KANSAS**

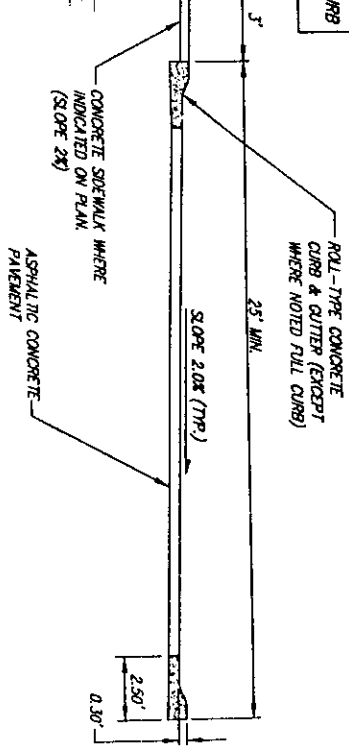
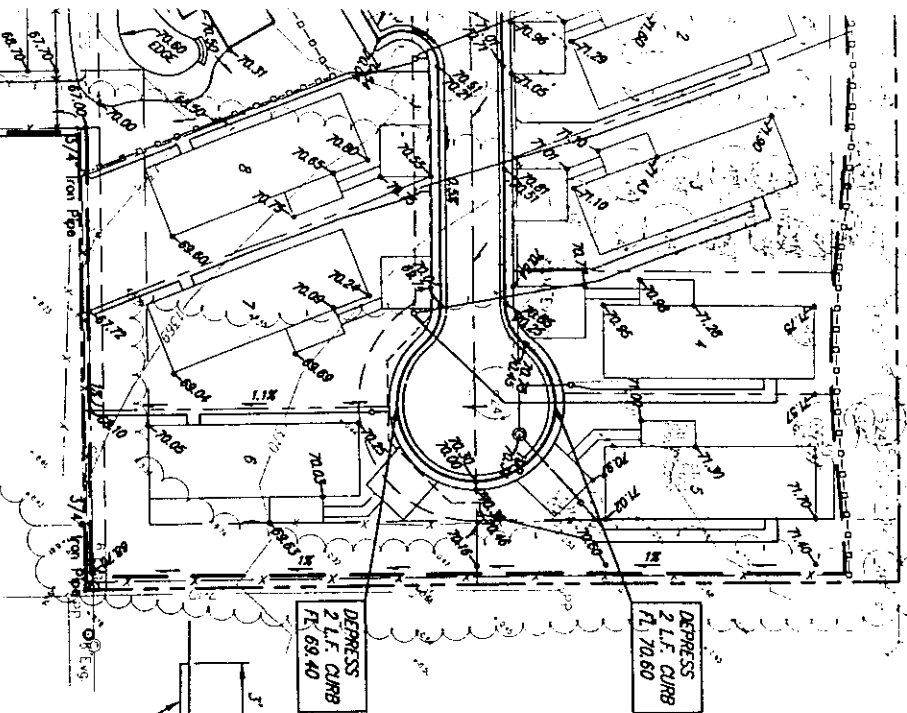
CONSTRUCTION D #1  
PLACE LIGHT STONE RIPRAP  
3/4" Iron Pipe  
2.4 = 37 AC.  
EXISTING 29" x 18" CURB

NOTE: ADD 1300.00 TO PROPOSED SPOT ELEVATIONS TO CONVERT TO M.S.L. DATUM.

SCALE 1" = 40'



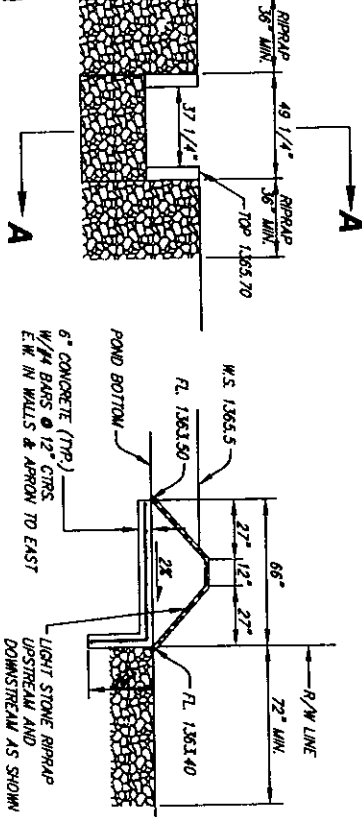
**SECTION FLOWMENWALK**



**TYPICAL PAVEMENT GRADING SECTION**

OFFICE of CENTRAL INSPECTION  
**FIELD COPY**  
KEEP ON JOB SITE  
DATE JUN - 1 2001

**ELEVATION OUTLET WEIR SECTION A-A**



**DETENTION POND #1  
OUTLET WEIR DETAILS**

**BAXTER PLACE MOBILE HOME PARK  
SITE GRADING AND DRAINAGE PLAN  
WICHITA, KANSAS**

**SPRB** 924 NORTH MAIN WICHITA, KANSAS 67203 316-264-8008  
SAVOY, RUGGLES & BOHM, P.A. ENGINEERING & SURVEYING 316-264-4621  
PROJECT NUMBER 1094 PPS E-mail: info@sprb.com

DESIGN	TOR	DRAWN	TEB	UTILITY	REVIEWER	DATE	APR. 3, 2001	REVISION	
C.M. FILE								GRADE	
SHEET								24	24



EXISTING 29'x18" CMPA

INTENTION  
VD #1  
TOP 286.5  
W/4 BARS

0.1' =  
0.7' AG

OTE  
363.50