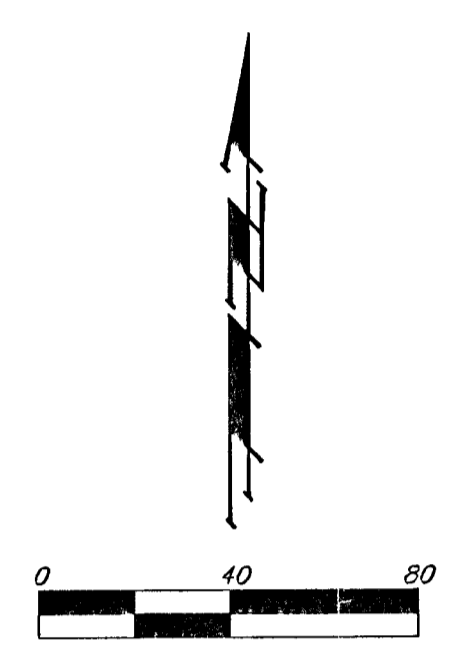
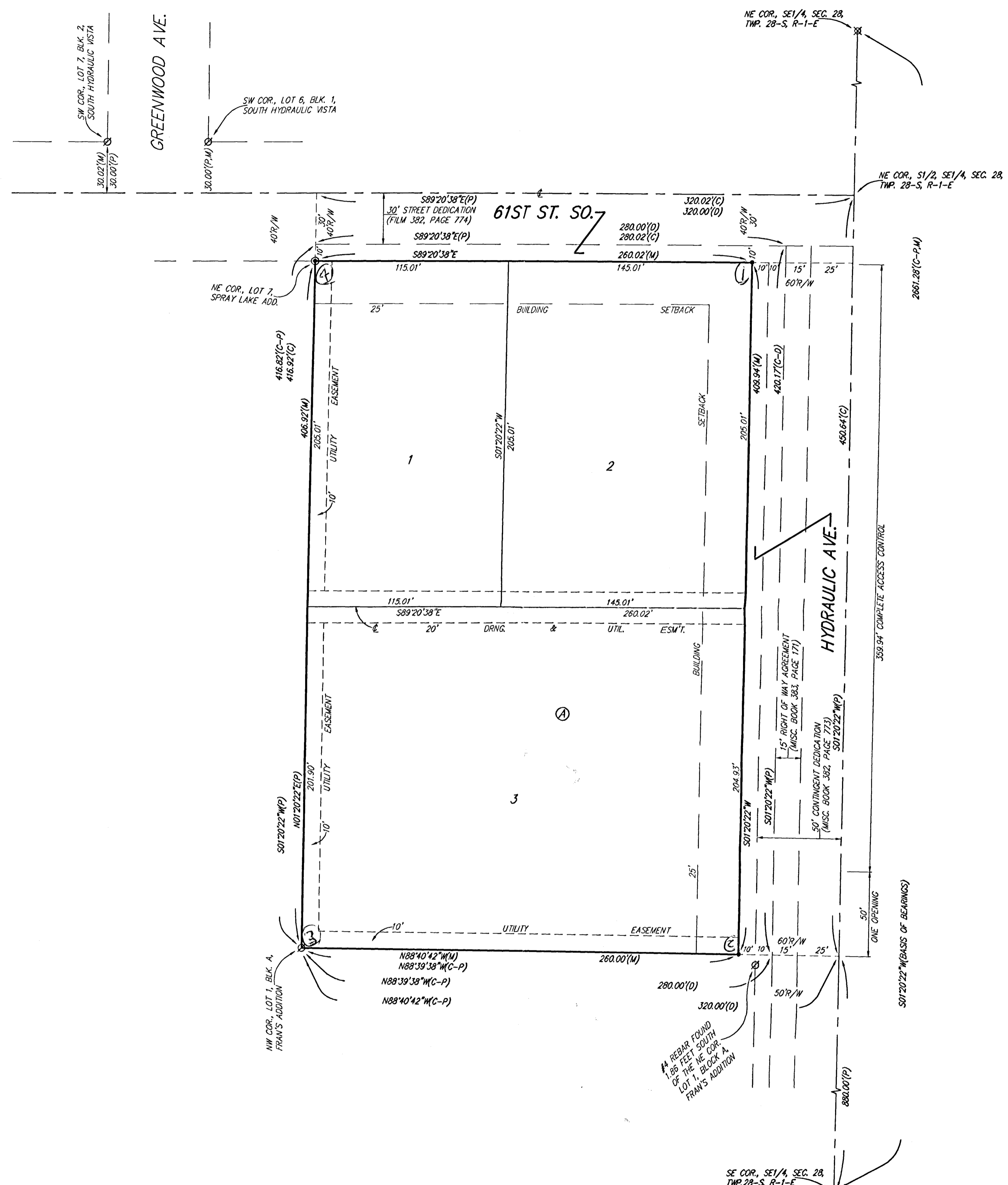


STRAW ADDITION

WICHITA, SEDGWICK COUNTY, KANSAS



- = #4 REBAR W/ "BAUGHMAN" CAP (SET)
 - ⊙ = #4 REBAR W/ "G & A" CAP (FOUND)
 - ⊗ = #5 REBAR (FOUND)
 - = 3/4" IRON (FOUND)
 - ⊖ = #4 REBAR (FOUND)
- (M) = MEASURED
 (D) = DESCRIBED
 (P) = PLATTED
 (C) = CALCULATED
 (C-P) = CALCULATED PER PLATTED INFO.
 (C-D) = CALCULATED PER DESCRIBED INFO.

NOTE:
 A MASTER GRADING PLAN FOR DRAINAGE HAS BEEN DEVELOPED FOR THIS SUBDIVISION AND IS ON FILE WITH THE CITY OF WICHITA, KANSAS. ALL DRAINAGE EASEMENTS, RIGHTS-OF-WAY, OR RESERVES SHALL REMAIN AT ESTABLISHED GRADES OR AS MODIFIED WITH THE APPROVAL OF THE CITY ENGINEER OF THE CITY OF WICHITA, KANSAS. NO OBSTRUCTIONS WHICH IMPEDE THE FLOW OF THIS DRAINAGE SYSTEM SHALL BE ALLOWED.

State of Kansas) SS
 Sedgwick County) We, Baughman Company, P.A., Surveyors in aforesaid county and state do hereby certify that we have surveyed and platted "STRAW ADDITION", Wichita, Sedgwick County, Kansas and that the accompanying plat is a true and correct exhibit of the property surveyed, described as a tract in the S1/2 of the SE1/4, of Sec. 28, Twp. 28-S, R-1-E of the 6th P.M., Sedgwick County, Kansas described as the west 280 feet of the east 320 feet of all of the land lying between the north line of Fran's Addition, Sedgwick County, Kansas and the south line of 61st Street South as dedicated by the instrument filed on Film 382, Page 77A.

Existing public easements and dedications being vacated by virtue of K.S.A. 12-512(b).

Baughman Company, P.A.

This plat of "STRAW ADDITION", Wichita, Sedgwick County, Kansas has been submitted to and approved by the Wichita-Sedgwick County Metropolitan Area Planning Commission, Wichita, Kansas.

Dated this _____ day of _____, 2003.
 Wichita-Sedgwick County Metropolitan Area Planning Commission

_____, Chair
 Bernard A. Hentzen

_____, Secretary
 Dale Miller

_____, Surveyor
 Michael G. Conrey

Know all men by these presents that we, the undersigned, have caused the land in the surveyors certificate to be platted into Lots, a Block, and Streets, to be known as "STRAW ADDITION", Wichita, Sedgwick County, Kansas. The utility easements are hereby granted as indicated for the construction and maintenance of all public utilities. The drainage and utility easement is hereby granted as indicated for drainage purposes and for the construction and maintenance of all public utilities. The streets are hereby dedicated to and for the use of the public. Access controls shall be as depicted on the face of the plat and are hereby granted to the City of Wichita, Kansas.

This plat approved and all dedications shown hereon accepted by the City Council of the City of Wichita, Kansas, this _____ day of _____, 2003.

_____, Mayor
 Carlos Mayans

_____, City Clerk
 Pat Graves

_____, Ray Straw
 _____, Glenda Straw

_____, Dale Straw
 _____, Opal Straw

Reviewed in accordance with K.S.A. 58-2005 on this _____ day of _____, 2003.

State of Kansas) SS
 Sedgwick County) The foregoing instrument acknowledged before me, this _____ day of _____, 2003, by Ray Straw and Glenda Straw, husband and wife.

_____, Notary Public

My App't. Exp. _____

_____, Notary Public
 Tricia L. Robello, L.S. #1246
 Deputy County Surveyor
 Sedgwick County, Kansas

State of Kansas) SS
 Sedgwick County) The foregoing instrument acknowledged before me, this _____ day of _____, 2003, by Dale Straw and Opal Straw, husband and wife.

_____, Notary Public

My App't. Exp. _____

Entered on transfer record this _____ day of _____, 2003.

_____, County Clerk
 Don Brace

We, the undersigned holders of a mortgage on the above described property, do hereby consent to this plat of "STRAW ADDITION", Wichita, Sedgwick County, Kansas.

_____, Emprise Bank

State of Kansas) SS
 Sedgwick County) This is to certify that this plat has been filed for record in the office of the Register of Deeds, this _____ day of _____, 2003 at _____ o'clock _____ M; and is duly recorded.

State of Kansas) SS
 Sedgwick County) The foregoing instrument acknowledged before me, this _____ day of _____, 2003, by _____ of Emprise Bank, on behalf of the bank.

_____, Notary Public

My App't. Exp. _____

_____, Register of Deeds
 Bill Meek

_____, Deputy
 Linda Kizzire