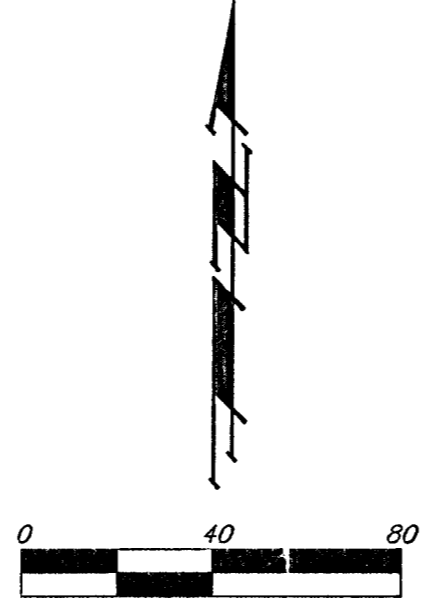
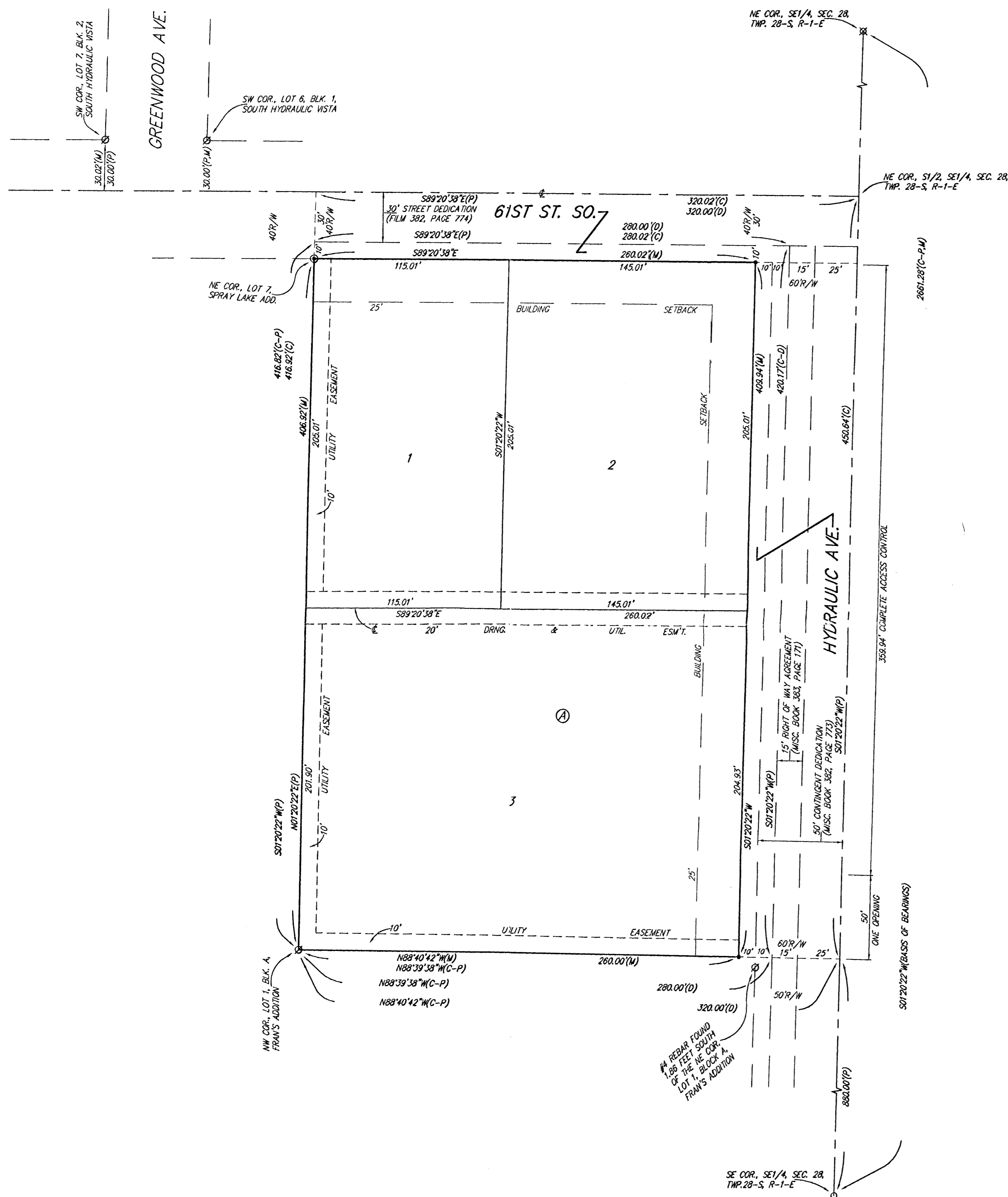


# STRAW ADDITION

## WICHITA, SEDGWICK COUNTY, KANSAS



\* = #4 REBAR W/ "BAUGHMAN" CAP (SET)  
 ⊕ = #4 REBAR W/ "O" & "A" CAP (FOUND)  
 ⊗ = #5 REBAR (FOUND)  
 ○ = 3/4" IRON (FOUND)  
 ⊙ = #4 REBAR (FOUND)

(M) = MEASURED  
 (D) = DESCRIBED  
 (P) = PLATTED  
 (C) = CALCULATED  
 (C-P) = CALCULATED PER PLATTED INFO.  
 (C-D) = CALCULATED PER DESCRIBED INFO.

**NOTE:**  
 A MASTER GRADING PLAN FOR DRAINAGE HAS BEEN DEVELOPED FOR THIS SUBDIVISION AND IS ON FILE WITH THE CITY OF WICHITA, KANSAS. ALL DRAINAGE EASEMENTS, RIGHTS-OF-WAY, OR RESERVES SHALL REMAIN AT ESTABLISHED GRADES OR AS MODIFIED WITH THE APPROVAL OF THE CITY ENGINEER OF THE CITY OF WICHITA, KANSAS. NO OBSTRUCTIONS WHICH IMPED THE FLOW OF THIS DRAINAGE SYSTEM SHALL BE ALLOWED.

State of Kansas) SS  
 Sedgwick County) We, Baughman Company, P.A., Surveyors in aforesaid county and state do hereby certify that we have surveyed and platted "STRAW ADDITION", Wichita, Sedgwick County, Kansas and that the accompanying plat is a true and correct exhibit of the property surveyed, described as a tract in the S1/2 of the SE1/4, of Sec. 28, Twp. 28-S, R-1-E of the 6th P.M., Sedgwick County, Kansas described as the west 280 feet of the east 320 feet of all of the land lying between the north line of Fran's Addition, Sedgwick County, Kansas and the south line of 61st Street South as dedicated by the instrument filed on Film 382, Page 774.

Existing public easements and dedications being vacated by virtue of K.S.A. 12-512(b).  
 Baughman Company, P.A.

Michael A. Conrey, Surveyor  
 Michael G. Conrey

Know all men by these presents that we, the undersigned, have caused the land in the surveyors certificate to be platted into Lots, a Block, and Streets, to be known as "STRAW ADDITION", Wichita, Sedgwick County, Kansas. The utility easements are hereby granted as indicated for the construction and maintenance of all public utilities. The drainage and utility easement is hereby granted as indicated for drainage purposes and for the construction and maintenance of all public utilities. The streets are hereby dedicated to and for the use of the public. Access controls shall be as depicted on the face of the plat and are hereby granted to the City of Wichita, Kansas.

Ray Straw, Glenda Straw  
 Dale Straw, Opal Straw

State of Kansas) SS  
 Sedgwick County) The foregoing instrument acknowledged before me, this 27th day of August, 2003, by Ray Straw and Glenda Straw, husband and wife.

Susan K. Monette, Notary Public  
 My App't. Exp. 11-9-03

State of Kansas) SS  
 Sedgwick County) The foregoing instrument acknowledged before me, this 27th day of August, 2003, by Dale Straw and Opal Straw, husband and wife.

Susan K. Monette, Notary Public  
 My App't. Exp. 11-9-03

We, the undersigned holders of a mortgage on the above described property, do hereby consent to this plat of "STRAW ADDITION", Wichita, Sedgwick County, Kansas.

Emprise Bank  
 AYA MAJORS, U.P.

State of Kansas) SS  
 Sedgwick County) The foregoing instrument acknowledged before me, this 27th day of August, 2003, by AYA MAJORS, VICE-PRESIDENT of Emprise Bank, on behalf of the bank.

Julie Bailey, Notary Public  
 My App't. Exp. 5-31-05

This plat of "STRAW ADDITION", Wichita, Sedgwick County, Kansas has been submitted to and approved by the Wichita-Sedgwick County Metropolitan Area Planning Commission, Wichita, Kansas.

Dated this \_\_\_\_\_ day of \_\_\_\_\_, 2003.  
 Bernard A. Hentzen, Chair

Dale Miller, Secretary

This plat approved and all dedications shown hereon accepted by the City Council of the City of Wichita, Kansas, this \_\_\_\_\_ day of \_\_\_\_\_, 2003.

Carlos Mayans, Mayor  
 Pat Graves, City Clerk

Reviewed in accordance with K.S.A. 58-2005 on this \_\_\_\_\_ day of \_\_\_\_\_, 2003.

Tricia L. Robello, L.S. #1246  
 Deputy County Surveyor  
 Sedgwick County, Kansas

Entered on transfer record this \_\_\_\_\_ day of \_\_\_\_\_, 2003.

Don Brace, County Clerk

State of Kansas) SS  
 Sedgwick County) This is to certify that this plat has been filed for record in the office of the Register of Deeds, this \_\_\_\_\_ day of \_\_\_\_\_, 2003 at \_\_\_\_\_ o'clock \_\_\_\_\_ M; and is duly recorded.

Bill Meek, Register of Deeds

Linda Kizzire, Deputy

**BAUGHMAN COMPANY P. A.**  
 ENGINEERING, SURVEYING, & PLANNING  
 318-282-7271 • 315 ELLIS • WICHITA, KANSAS 67211