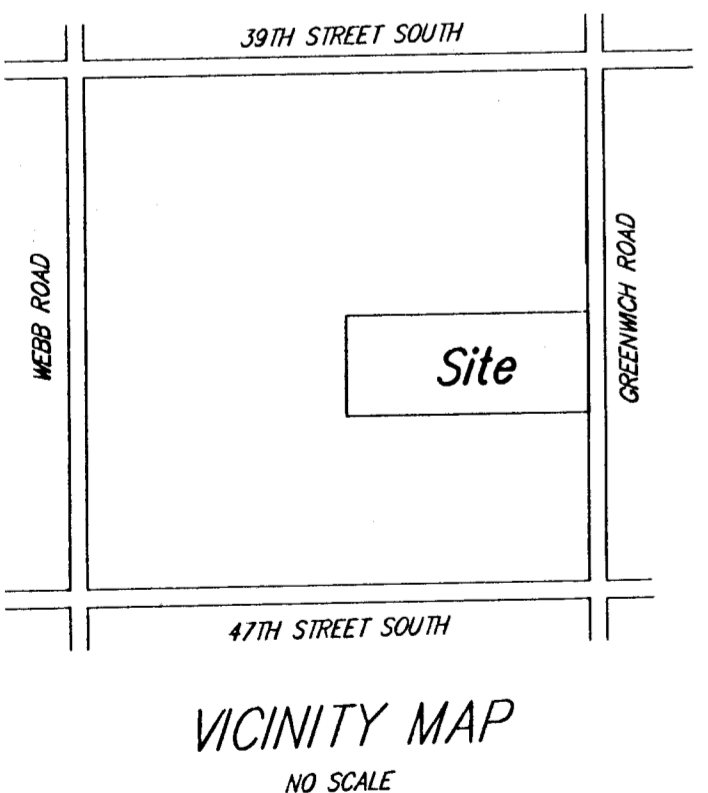
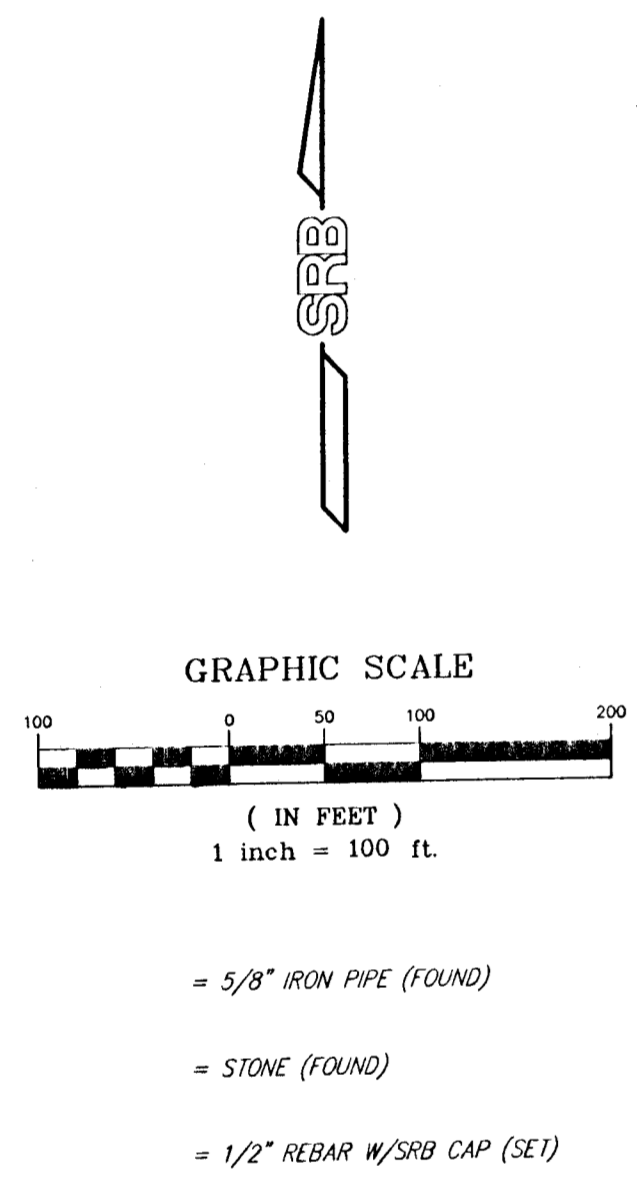
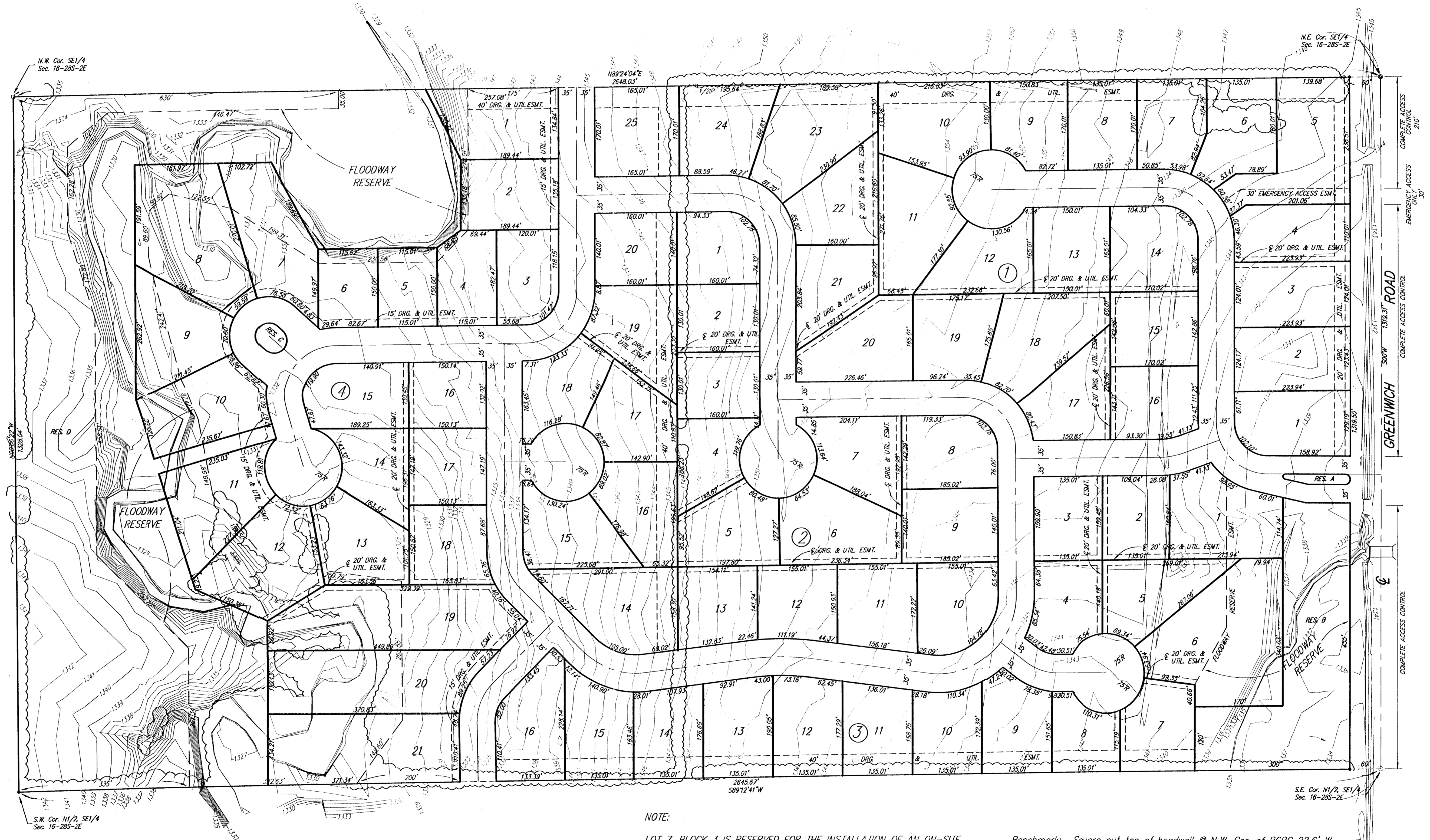


# PRELIMINARY PLAT STONEYPARK ESTATES SEDGWICK COUNTY, KANSAS



**LEGAL DESCRIPTION:**  
 The N1/2 of the SE1/4 of Sec. 16, TWP. 28-S, R2E of the 6th P.M.,  
 Sedgwick County, Kansas.  
 Gross Size: 3,503,338.23 SQ. FT. OR 80.43 ACRES  
 Net Size: 3,437,368.84 SQ. FT. OR 78.91 ACRES

**OWNER:**  
 NIES REAL ESTATE LLC.  
 9415 E. HARRY  
 WICHITA, KANSAS 67207  
 (316) 684-0161

**NOTE:**  
 LOT 7, BLOCK 3 IS RESERVED FOR THE INSTALLATION OF AN ON-SITE  
 WASTEWATER TREATMENT FACILITY.  
 RESERVES 'A' AND 'C'; SHALL ALLOW ENTRY FEATURES AND SIGNAGE,  
 WALLS, LANDSCAPING, IRRIGATION, LIGHTING, WALKS, AND UTILITIES  
 CONFINED TO EASEMENTS.  
 RESERVES 'B' AND 'D' SHALL ALLOW SIGNAGE, WALLS, LANDSCAPING,  
 IRRIGATION, LIGHTING, WALKS, RECREATIONAL STRUCTURES, DRAINAGE  
 AND DRAINAGE STRUCTURES, PONDS, RELATED POOL STRUCTURES,  
 AND UTILITIES CONFINED TO EASEMENTS.

Benchmark: Square cut top of headwall @ N.W. Cor. of RCBC 22.6' W.  
 and 898.6' S. of the NE Cor., SE1/4, Sec. 16, TWP. 28-S, R2E,  
 Sedgwick County, Kansas. Elevation= 1341.98 MSL

**SRB** 924 NORTH MAIN 316-284-8008  
 WICHITA, KANSAS 67203 FAX 284-4821  
 http://www.feist.com/~srb E-mail: srbs@feist.com

**SAVOY, RUGGLES & BOHM, P.A.**  
 ENGINEERING & SURVEYING

DWG FILE: 01232P-R.J.  
 PROJECT NO: 98L01232P

OCT. 16, 2000