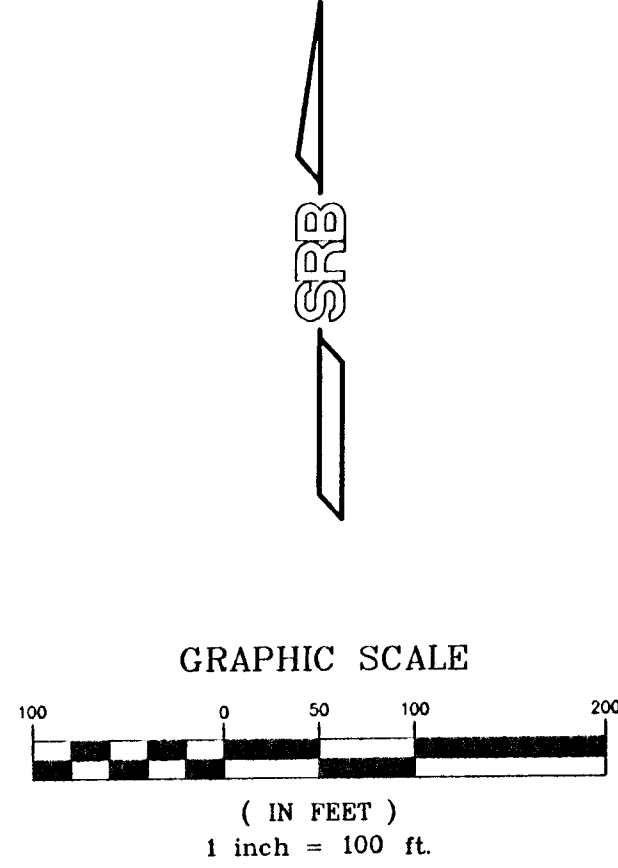
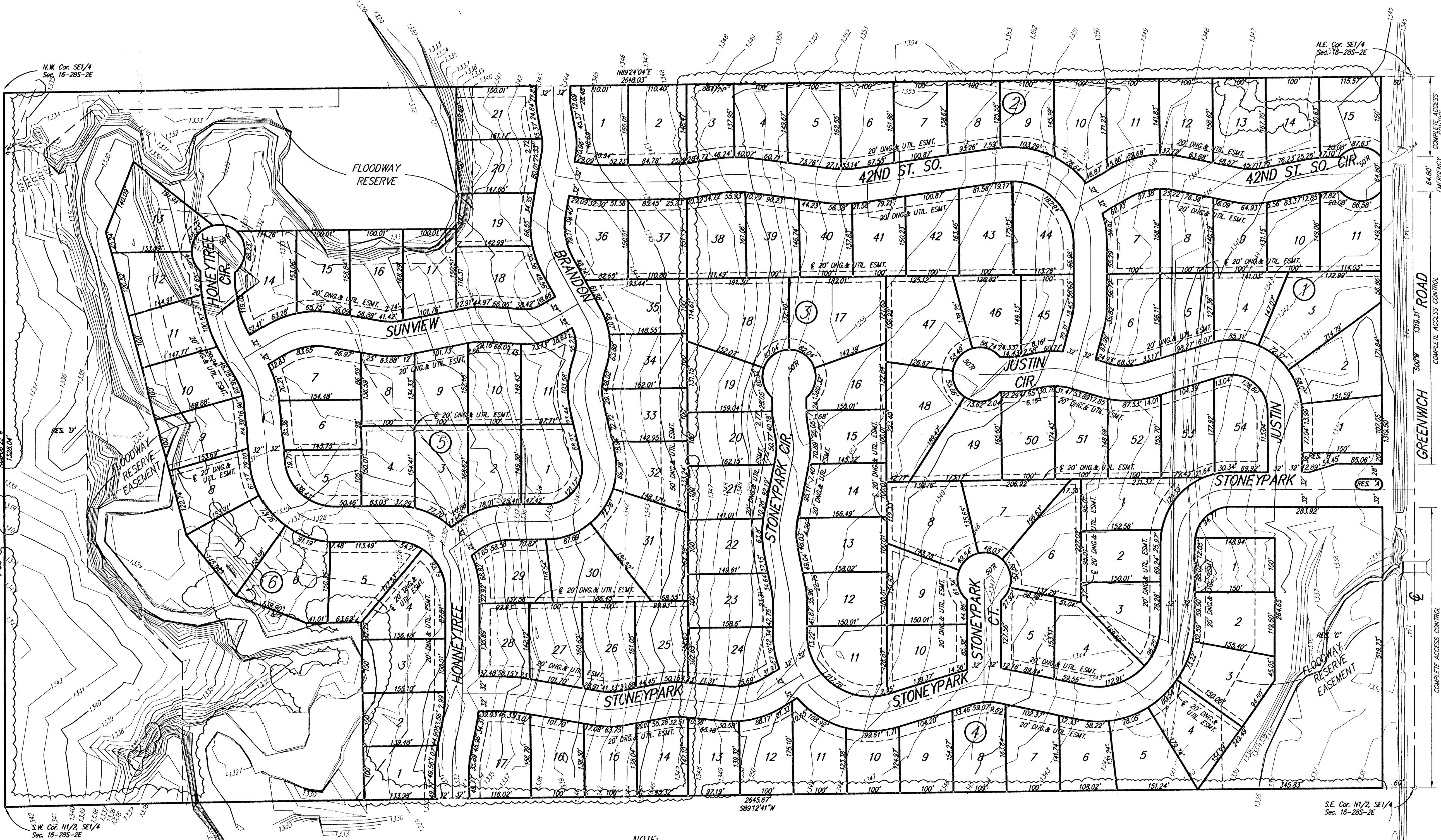


# REVISED PRELIMINARY PLAT

## STONEYPARK ESTATES

SEDGWICK COUNTY, KANSAS



OWNER:  
 NIES REAL ESTATE LLC.  
 9415 E. HARRY  
 WICHITA, KANSAS 67207  
 (316) 684-0161

**LEGAL DESCRIPTION:**  
 The N1/2 of the SE1/4 of Sec. 16, TWP. 28-S, R2E of the 6th P.M., Sedgwick County, Kansas.  
 Gross Size: 3,503,338.23 SQ. FT. OR 80.43 ACRES

**NOTE:**  
 RESERVES 'A' AND 'B' SHALL ALLOW ENTRY FEATURES AND SIGNAGE, WALLS, LANDSCAPING, IRRIGATION, LIGHTING, WALKS, AND UTILITIES CONFINED TO EASEMENTS.  
 RESERVES 'C' AND 'D' SHALL ALLOW SIGNAGE, WALLS, LANDSCAPING, IRRIGATION, LIGHTING, WALKS, RECREATIONAL STRUCTURES, DRAINAGE AND DRAINAGE STRUCTURES, PONDS, POOLS, RELATED POOL STRUCTURES, AND UTILITIES CONFINED TO EASEMENTS, SEWER TREATMENT FACILITIES, LATERAL FIELDS, SAND FILTRATION SYSTEMS.

Benchmark: Square cut top of headwall @ N.W. Cor. of RCBC 22.6' W and 898.6' S. of the NE Cor., SE1/4, Sec. 16, TWP. 28-S, R2E, Sedgwick County, Kansas. Elevation= 1341.98 MSL

DWG FILE: 01233P-R.J.  
 PROJECT NO: SRB.01232P

**SRB** 924 NORTH MAIN WICHITA, KANSAS 67203  
 SAVOY, RUGGLES & BOHM, P.A.  
 ENGINEERING & SURVEYING

316-264-8008  
 FAX 264-4621  
 E-mail: srbo@teist.com

SEPT. 2001