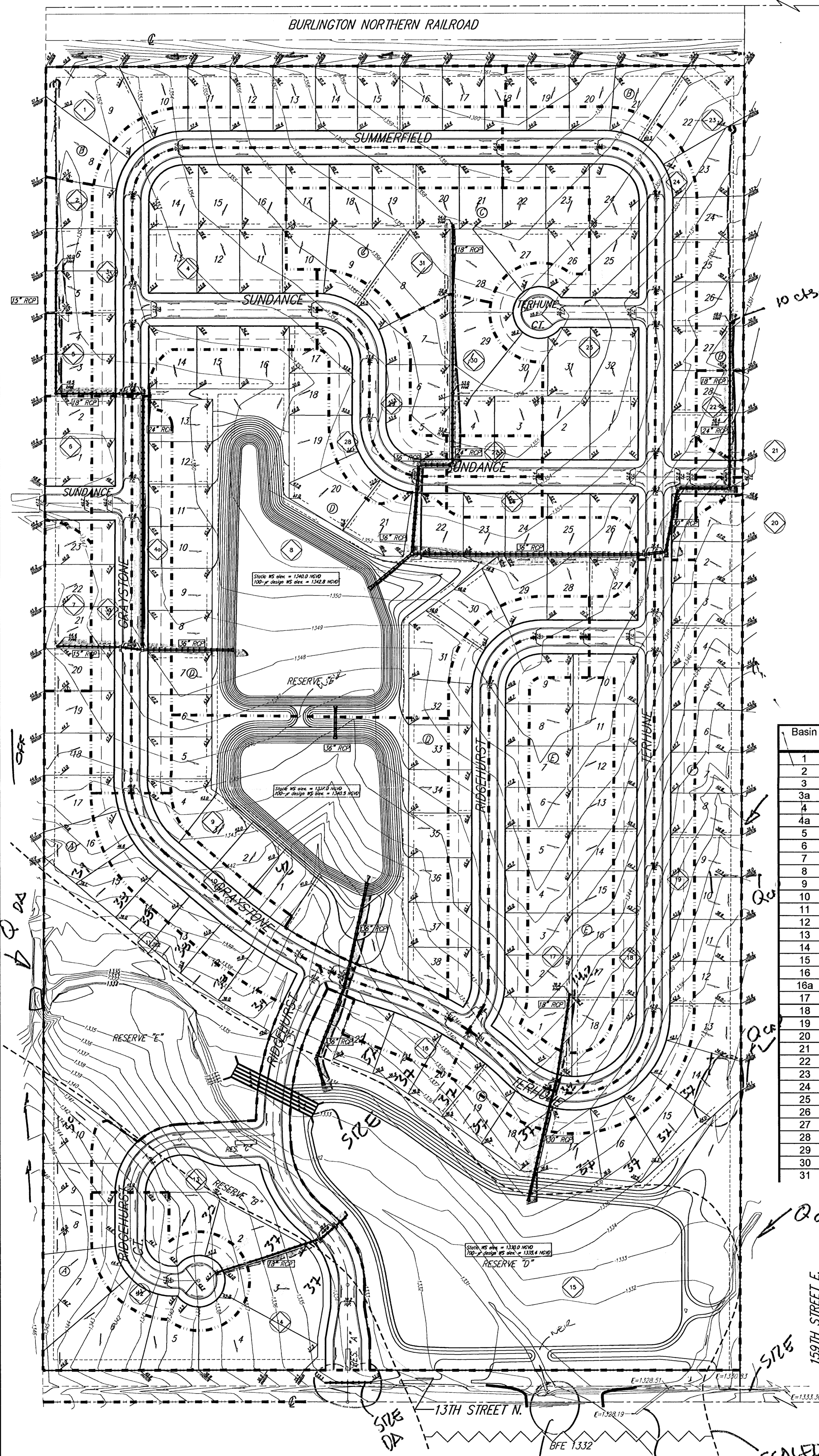


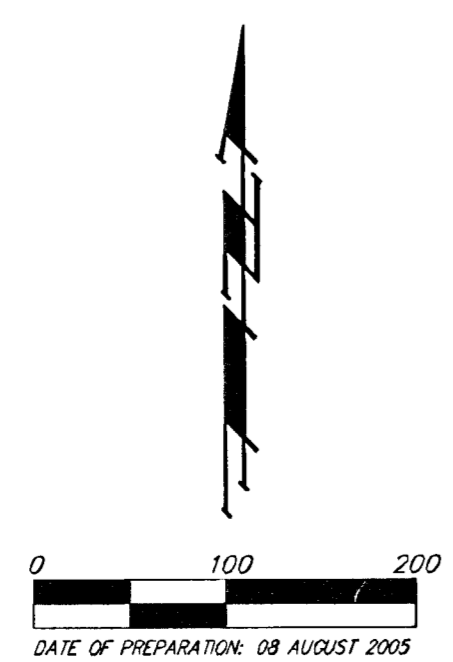
DRAINAGE PLAN STONEBRIDGE ADDITION WICHITA, SEDGWICK COUNTY, KANSAS



Basin	Area acres	C2	C5	C100	Q2 cfs	Q5 cfs	Q100 cfs
1	2	0.48	0.52	0.74	3.7	4.7	10.9
2	0.5	0.48	0.52	0.74	0.9	1.2	2.7
3	2.1	0.48	0.52	0.74	3.9	5.0	11.5
3a	1.3	0.48	0.52	0.74	2.4	3.1	7.1
4	3.5	0.48	0.52	0.74	6.4	8.3	19.1
4a	1.3	0.48	0.52	0.74	2.4	3.1	7.1
5	0.3	0.48	0.52	0.74	0.6	0.7	1.6
6	0.5	0.48	0.52	0.74	0.9	1.2	2.7
7	0.6	0.48	0.52	0.74	1.1	1.4	3.3
8	8.4	0.48	0.52	0.74	15.4	19.9	45.8
9	5	0.48	0.52	0.74	9.2	11.9	27.3
10	2.6	0.48	0.52	0.74	4.8	6.2	14.2
11	5.4	0.48	0.52	0.74	9.9	12.8	29.5
12	1.3	0.48	0.52	0.74	2.4	3.1	7.1
13	3	0.48	0.52	0.74	5.5	7.1	16.4
14	0.2	0.48	0.52	0.74	0.4	0.5	1.1
15	13.3	0.48	0.52	0.74	24.5	31.5	72.5
16	0.6	0.48	0.52	0.74	1.1	1.4	3.3
16a	0.5	0.48	0.52	0.74	0.9	1.2	2.7
17	2.6	0.48	0.52	0.74	4.8	6.2	14.2
18	3.8	0.48	0.52	0.74	7.0	9.0	20.7
19	2.5	0.48	0.52	0.74	4.6	5.9	13.6
20	0.1	0.48	0.52	0.74	0.2	0.2	0.5
21	0.1	0.48	0.52	0.74	0.2	0.2	0.5
22	0.3	0.48	0.52	0.74	0.6	0.7	1.6
23	2	0.48	0.52	0.74	3.7	4.7	10.9
24	1.9	0.48	0.52	0.74	3.5	4.5	10.4
25	3.7	0.48	0.52	0.74	6.8	8.8	20.2
26	0.3	0.48	0.52	0.74	0.6	0.7	1.6
27	0.3	0.48	0.52	0.74	0.6	0.7	1.6
28	0.7	0.48	0.52	0.74	1.3	1.7	3.8
29	0.8	0.48	0.52	0.74	1.5	1.9	4.4
30	1.3	0.48	0.52	0.74	2.4	3.1	7.1
31	2.4	0.48	0.52	0.74	4.4	5.7	13.1

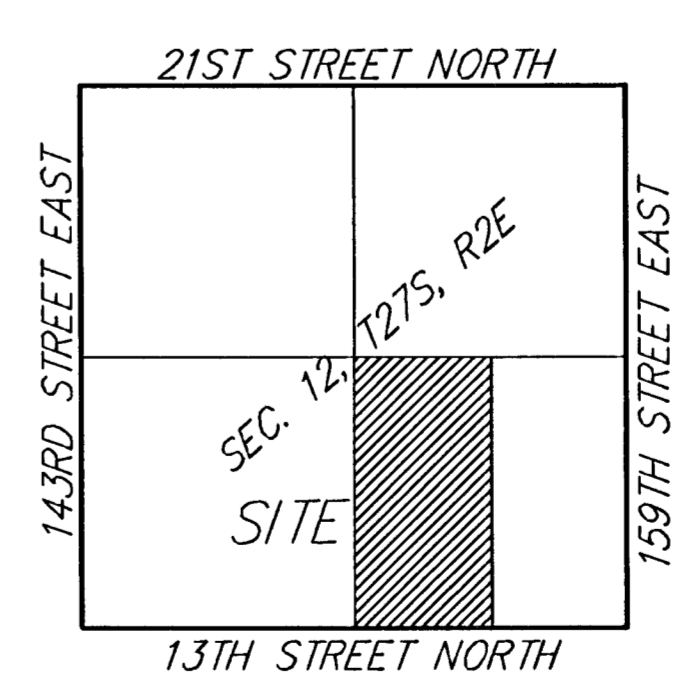
MINIMUM BUILDING PAD ELEVATIONS FOR LOWEST OPENING TO THE STRUCTURES

LOT	BLOCK	ELEVATION
1-3	A	1337.0
10,11,16	A	1339.0
12-15	A	1338.0
1-6, 33-38	D	1342.0
7-21, 29-32	D	1344.0
14-22	F	1337.0



BENCHMARK:
 600' tall sign benchmark in high line pole
 40 feet southwest of the Southeast
 corner of Section 12, T-27-S, R-2-E.
 (N.G.V.D. = 1347.03)

NOTE: Floodplain boundaries and Base Flood Elevation scaled per FEMA FIRM 200321 0150 A.



1332
 175.44