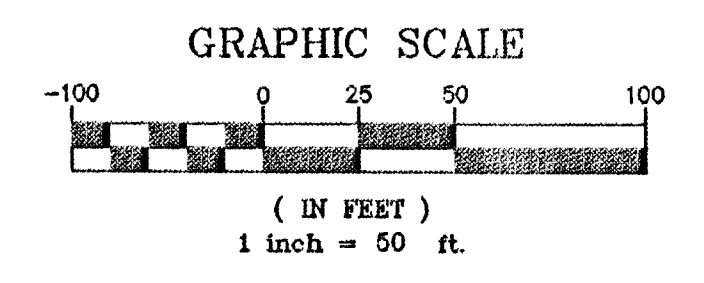
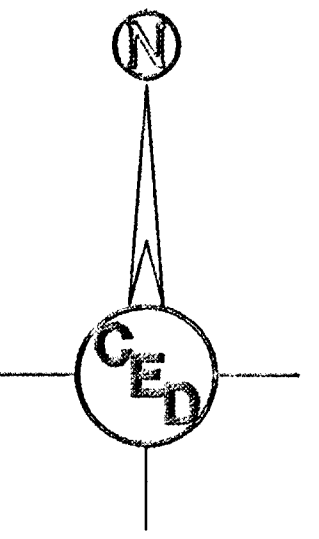


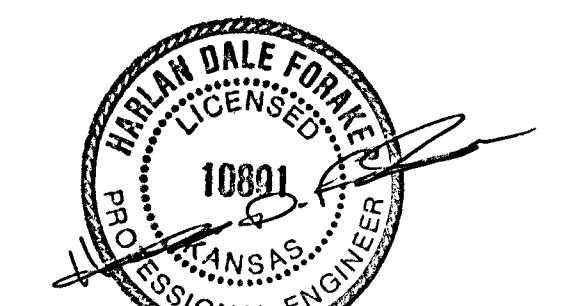
# LOT GRADING PLAN FOR "SOUTHWIND ESTATES"

AN ADDITION TO SEDGWICK COUNTY, KANSAS  
IN THE NW 1/4 OF SECTION 29, T28S, R1E OF THE 6TH P.M.



- LEGEND**
- BM = BENCHMARK
  - ▲ = SECTION CORNER FOUND
  - = SET #4 REBAR W/D CAP 'TILSI CLS22'
  - = EXISTING TRAFFIC SIGN
  - ⊠ = STORM WATER SEWER MH
  - ⊙ = EXISTING SSMH
  - ⊙ = PROPOSED SSMH
  - FH = EXISTING FIRE HYDRANT
  - ⊙ = PROPOSED FIRE HYDRANT
  - ⊙ = EXISTING WATER VALVE
  - ⊙ = LIGHT POLE
  - ⊙ = EXISTING WELL
  - ⊙ = EXISTING SEPTIC TANK
  - ⊙ = CENTERLINE
  - = PROPERTY LINE
  - W = WATER MAIN
  - SS = SANITARY SEWER
  - G = GAS MAIN
  - SWS = STORM WATER SEWER
  - CP = SURVEY CONTROL POINT
  - CAV = CABLE T.V. BOX
  - UE = UNDERGROUND ELECTRIC
  - UT = UNDERGROUND TELEPHONE (FIBER OPTIC)

- DRAINAGE KEY**
- = PROPOSED ELEV.
  - = EXISTING ELEV.
  - = FLOW GRADE
  - = FLOW DIRECTION
  - = EXIST. CONTOURS
  - = PROP. CONTOURS

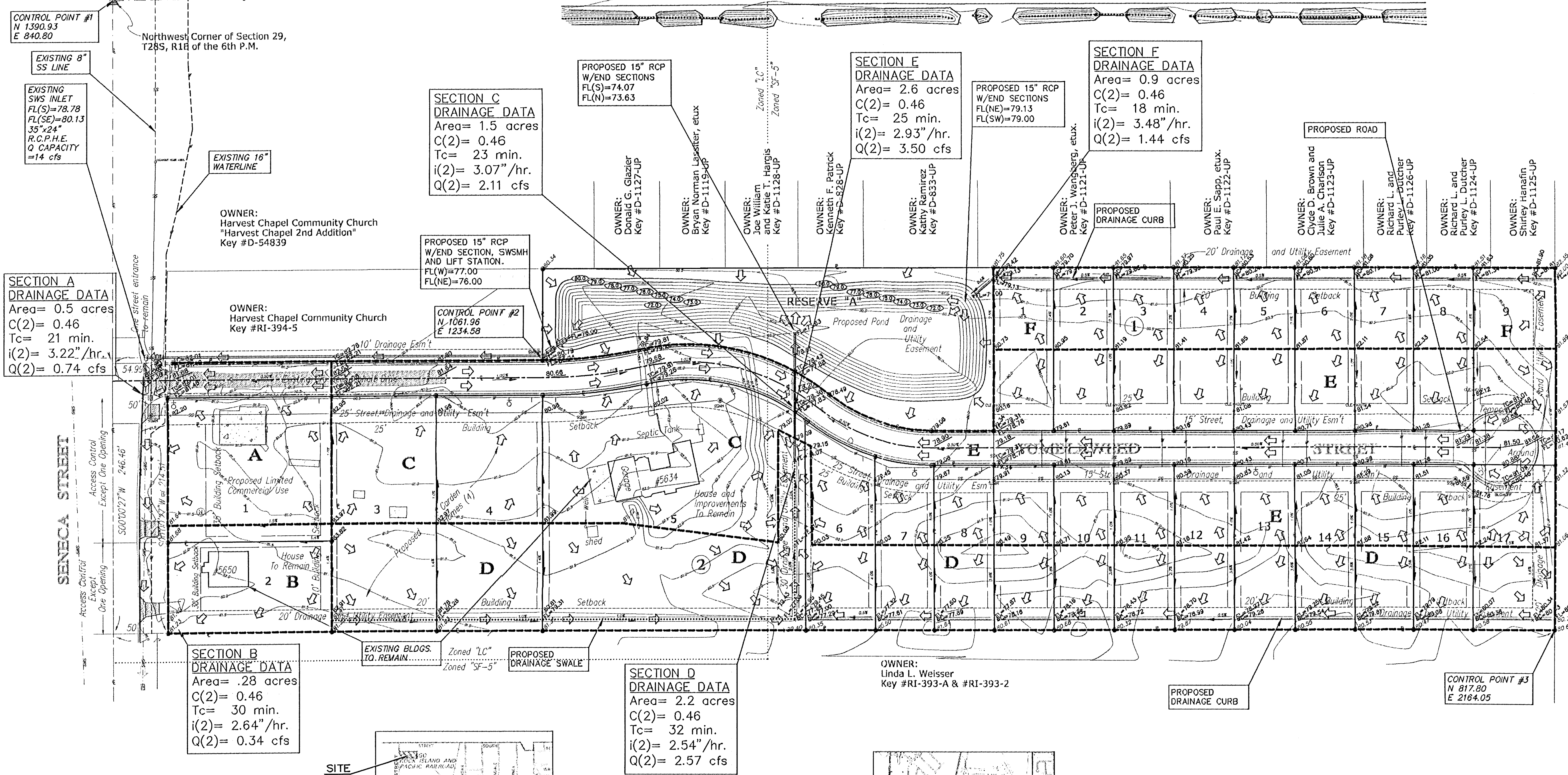
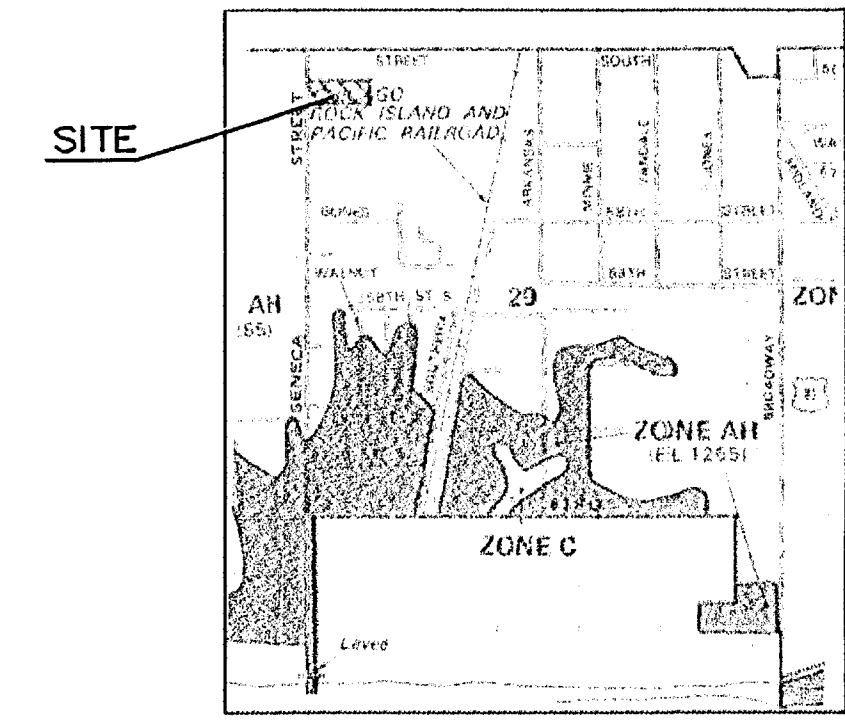
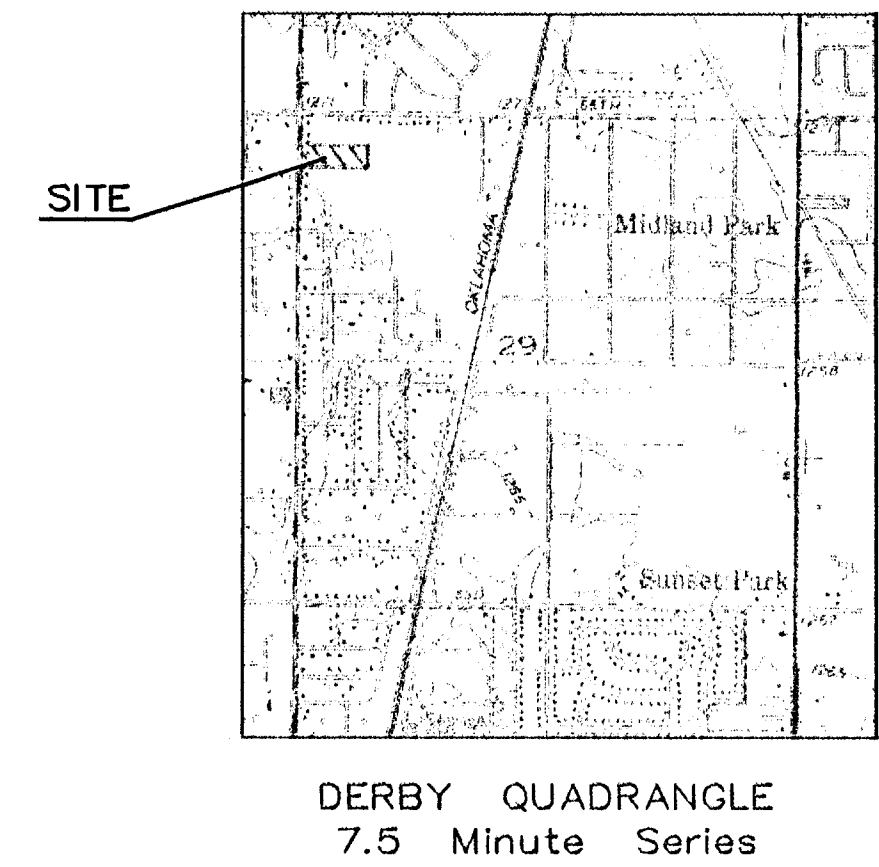


**HORIZONTAL CONTROL POINTS**

C.P. NO.	N	E	DESCRIPTION
C.P. NO. 1	1390.93	840.80	1/2" IRON, SEC CORNER, NW SEC 29, T28S, R1E
C.P. NO. 2	1061.96	1234.58	PROPERTY PIN, SW COR. PROP. DET. POND LOT
C.P. NO. 3	817.80	2164.05	PROPERTY PIN, SE COR. LOT 17, BLOCK 1

**BENCHMARK #1**  
NW CORNER OF THE INTERSECTION OF SENECA AND 55TH STREET SOUTH. SE CORNER TRAFFIC SIGNAL LIGHT BASE. (SIGNAL LIGHT NOW GONE.) 66.0' WEST AND 49.4' NORTH OF CENTERLINE BOTH. 86.03' NW OF 1/2" IRON IN SECTION CORNER.  
ELEVATION = 82.56 CITY DATUM  
1269.96 NAVD29

**BENCHMARK #2**  
RAILROAD SPIKE IN POWER POLE, NEAR NW CORNER OF LOT 1, BLK. 2.  
ELEVATION = 82.56 CITY DATUM  
1269.96 NAVD29



UTILITIES SHOWN REPRESENT THE BEST INFORMATION AVAILABLE FOR DESIGN. ADDITIONAL UTILITIES MAY BE PRESENT ON THIS PROJECT. THE CONTRACTOR SHALL BE RESPONSIBLE FOR DETERMINING THE EXACT LOCATION, DEPTH AND SIZE OF ALL UNDERGROUND UTILITIES PRIOR TO CONSTRUCTION. THE CONTRACTOR SHALL BE LIABLE FOR ANY DAMAGE CAUSED BY THE FAILURE TO DO SO.

LOT GRADING PLAN PREPARED BY:  
**CERTIFIED ENGINEERING DESIGN, P.A.**

810 WEST DOUGLAS, SUITE C  
WICHITA, KANSAS 67203  
PH: (316) 262-8808  
FAX: (316) 262-1669

SHEET 1  
TOTAL 1