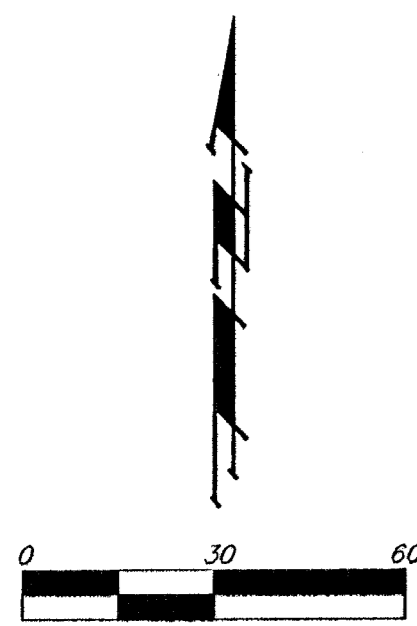


April 9, 2003

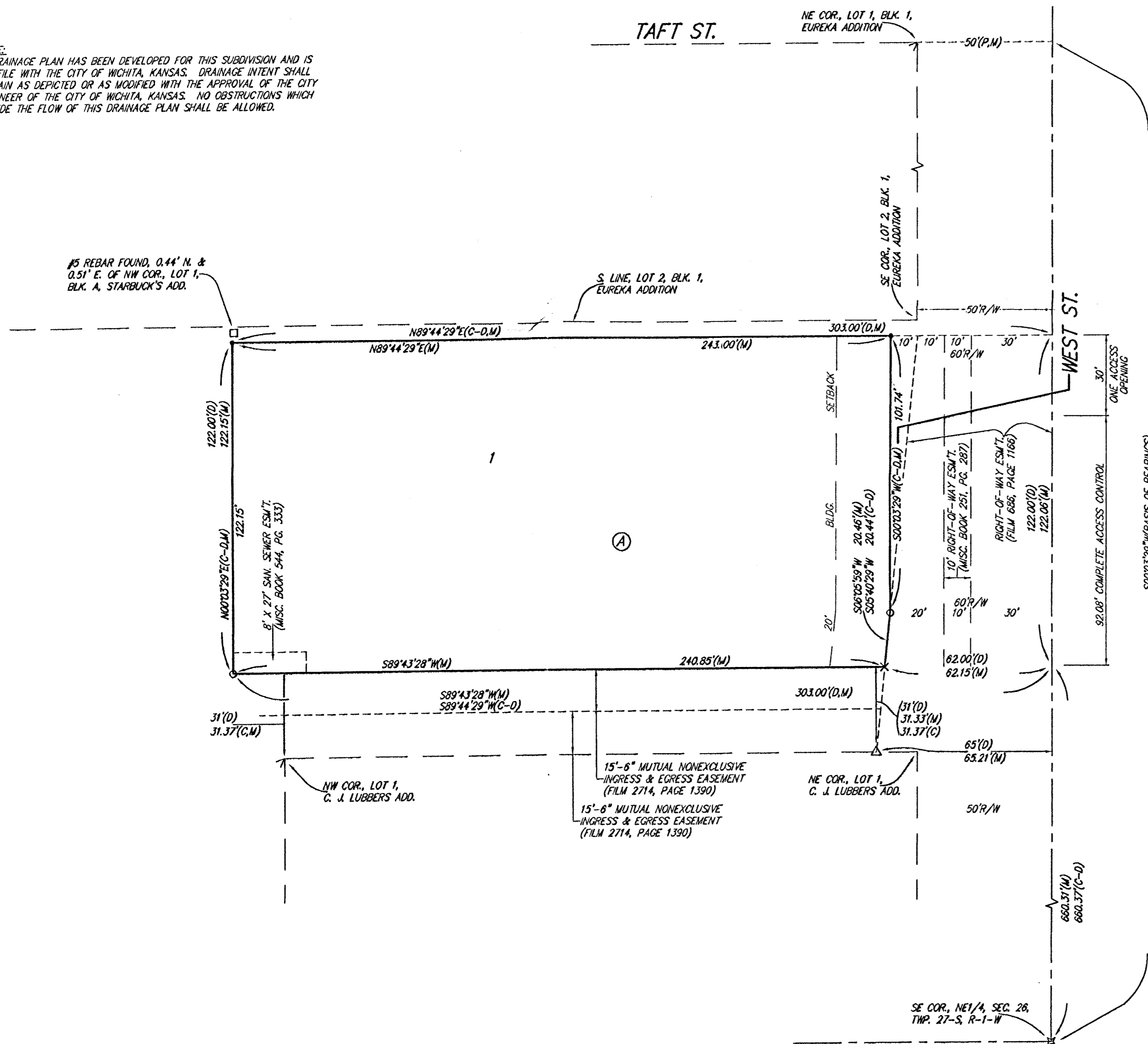
# STARBUCK'S ADDITION WICHITA, SEDGWICK COUNTY, KANSAS



- = #4 REBAR W/ "BAUGHMAN" CAP (SET)
- × = CROSS (FOUND)
- = #5 REBAR (FOUND)
- △ = CONCRETE NAIL (FOUND)
- ∩ = 1/2" NOTCH (FOUND)
- = "P-K" NAIL (SET)
- ⊕ = #5 REBAR IN THIMBLE (FOUND)

- (M) = MEASURED
- (P) = PLATTED
- (D) = DESCRIBED
- (C) = CALCULATED
- (C-D) = CALCULATED PER DESCRIBED INFO.

NOTE:  
A DRAINAGE PLAN HAS BEEN DEVELOPED FOR THIS SUBDIVISION AND IS ON FILE WITH THE CITY OF WICHITA, KANSAS. DRAINAGE INTENT SHALL REMAIN AS DEPICTED OR AS MODIFIED WITH THE APPROVAL OF THE CITY ENGINEER OF THE CITY OF WICHITA, KANSAS. NO OBSTRUCTIONS WHICH IMPEDE THE FLOW OF THIS DRAINAGE PLAN SHALL BE ALLOWED.



State of Kansas) SS We, Baughman Company, P.A., Surveyors in Sedgwick County) do hereby certify that we have surveyed and platted "STARBUCK'S ADDITION", Wichita, Sedgwick County, Kansas and the accompanying plat is a true and correct exhibit of the property surveyed, described as follows: Beginning at the SE corner of the NE1/4 of the SE1/4 of the NE1/4 of Sec. 28, Twp. 27-S, R-1-W of the 6th P.M., Sedgwick County, Kansas; thence north 122 feet; thence west 303 feet; thence south 122 feet; thence east 303 feet to the point of beginning.

Existing public easements and dedications being vacated by virtue of K.S.A. 12-512(b).

Baughman Company, P.A.

This plat of "STARBUCK'S ADDITION", Wichita, Sedgwick County, Kansas has been submitted to and approved by the Wichita-Sedgwick County Metropolitan Area Planning Commission, Wichita, Kansas.

Dated this \_\_\_\_\_ day of \_\_\_\_\_, 2003.  
Wichita-Sedgwick County Metropolitan Area Planning Commission

\_\_\_\_\_, Chair  
Bernard A. Hentzen

\_\_\_\_\_, Secretary  
Dale Miller

Michael G. Conroy, Surveyor  
Michael G. Conroy

This plat approved and all dedications shown hereon accepted by the City Council of the City of Wichita, Kansas, this \_\_\_\_\_ day of \_\_\_\_\_, 2003.

\_\_\_\_\_, Mayor  
Carlos Mayans

\_\_\_\_\_, City Clerk  
Pat Graves

Know all men by these presents that we, the undersigned, have caused the land in the surveyors certificate to be platted into a Lot, a Block, and Street, to be known as "STARBUCK'S ADDITION", Wichita, Sedgwick County, Kansas. The street is hereby dedicated to and for the use of the public. Access controls shall be as depicted on the face of the plat and are hereby granted to the City of Wichita, Kansas.

EZE Money Investments, L.C.

\_\_\_\_\_, Member  
L. BISA E. LOWRY

Reviewed in accordance with K.S.A. 58-2005 on this \_\_\_\_\_ day of \_\_\_\_\_, 2003.

State of Kansas) SS The foregoing instrument acknowledged before me, this 28th day of August, 2003, by L. BISA E. LOWRY, Member of EZE Money Investments, L.C., on behalf of the limited liability company.

\_\_\_\_\_, Notary Public  
GEORGIA A. BIGGS

My App't. Exp. 3-13-07

\_\_\_\_\_, Deputy County Surveyor  
Tricia L. Robello, L.S. #1246  
Sedgwick County, Kansas

Entered on transfer record this \_\_\_\_\_ day of \_\_\_\_\_, 2003.

We the undersigned holders of a mortgage on the above described property, do hereby consent to this plat of "STARBUCK'S ADDITION", Wichita, Sedgwick County, Kansas.

INTRUST Bank, N.A.

\_\_\_\_\_, Senior Vice President  
GARY D. SCHMITT

\_\_\_\_\_, County Clerk  
Don Brace

This is to certify that this plat has been filed for record in the office of the Register of Deeds, this \_\_\_\_\_ day of \_\_\_\_\_, 2003 at \_\_\_\_\_ o'clock \_\_\_\_\_ M.; and is duly recorded.

State of Kansas) SS The foregoing instrument acknowledged before me, this 29th day of August, 2003, by Gary D. Schmitt, Sr. Vice President of INTRUST Bank, N.A., on behalf of the bank.

\_\_\_\_\_, Notary Public  
SUSAN K. MONETTE

My App't. Exp. 11-9-03

\_\_\_\_\_, Register of Deeds  
Bill Meek

\_\_\_\_\_, Deputy  
Linda Kizzire

