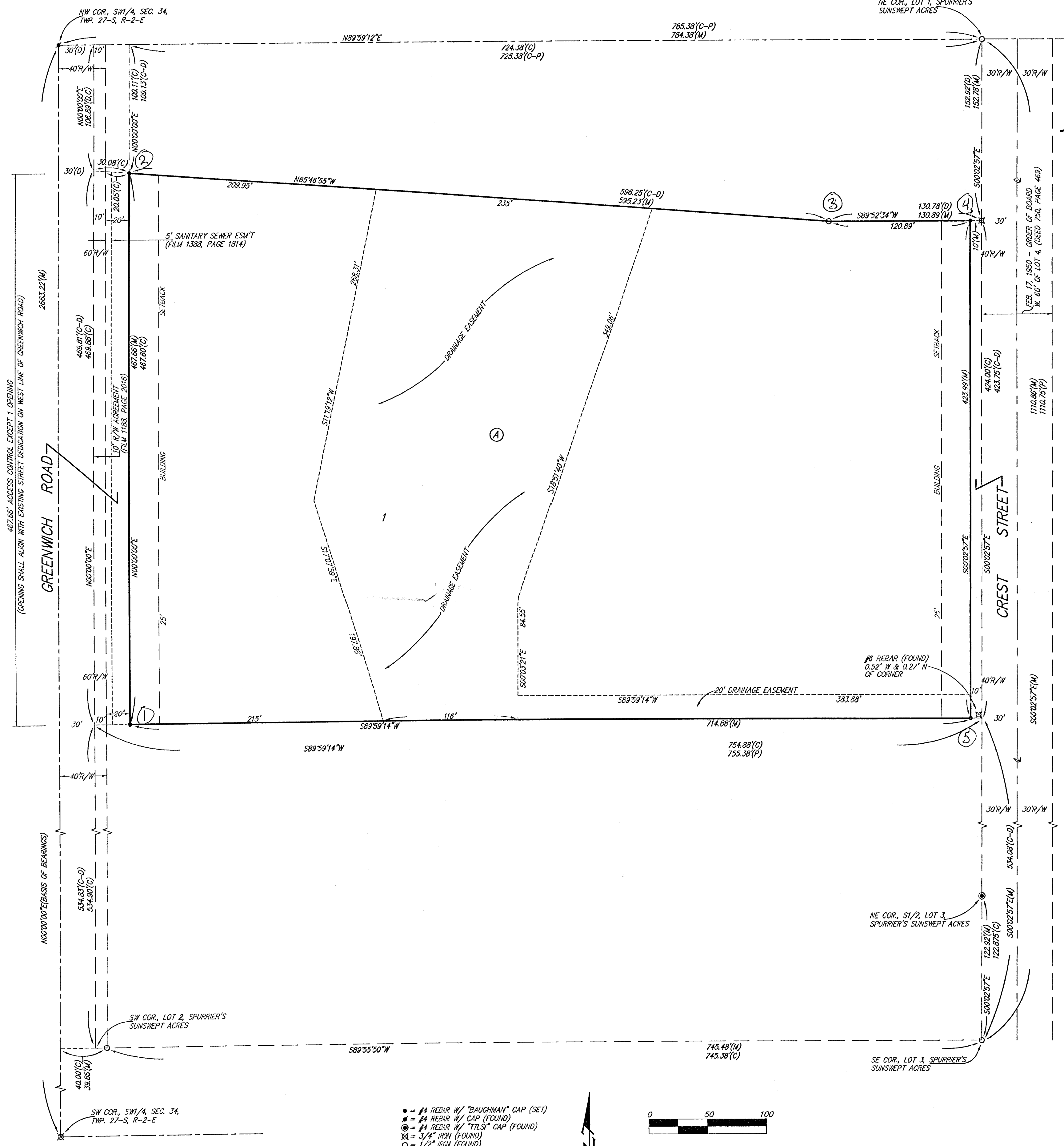


SPURRIER'S SUNSWEPT ACRES 2ND ADDITION

SEDGWICK COUNTY, KANSAS



State of Kansas) SS We, Baughman Company, P.A., Surveyors in
Sedgwick County) do hereby certify that we have surveyed and
platted "SPURRIER'S SUNSWEPT ACRES 2ND ADDITION", Sedgwick County,
Kansas and that the accompanying plat is a true and correct exhibit
of the property surveyed, described as Lot 1, Spurrier's Sunswept Acres,
Sedgwick County, Kansas, except the south 288.33 feet thereof, and
except beginning at the NE corner of said Lot 1; thence south along
the east line of said Lot 1, a distance of 152.92 feet; thence west
parallel with the north line of said Lot 1, a distance of 130.78 feet;
thence northwesterly to a point in the west line of said Lot 1 and
106.89 feet south of the NW corner of said Lot 1; thence north
106.89 feet to the NW corner of said Lot 1; thence east along the north
line of said Lot 1, a distance of 755.38 feet to the point of beginning.

All being situated in the SW1/4 of Sec. 34, Twp. 27-S,
R-2-E of the 6th P.M., Sedgwick County, Kansas.

Existing public easements and dedications being
vacated by virtue of K.S.A. 12-512(b).

Baughman Company, P.A.

Michael G. Conrey
 Michael G. Conrey, Surveyor

This plat of "SPURRIER'S SUNSWEPT ACRES 2ND ADDITION", Sedgwick County, Kansas has been submitted to and approved by the Wichita-Sedgwick County Metropolitan Area Planning Commission, Wichita, Kansas.

Dated this _____ day of _____, 2001.

Wichita-Sedgwick County Metropolitan Area Planning Commission

_____, Chairman
Christopher S. Carraher

_____, Secretary
Marvin S. Krout

This plat approved and all dedications shown hereon accepted by the City Council of the City of Wichita, Kansas, this _____ day of _____, 2001.

_____, Mayor
Bob Knight

_____, City Clerk
Pat Burnett

This plat approved and all dedications shown hereon accepted by the Board of Commissioners of Sedgwick County, Kansas, this _____ day of _____, 2001.

_____, Chair
Carolyn McGinn

ATTEST: _____, County Clerk
Don Brace

Reviewed in accordance with K.S.A. 58-2005 on this _____ day of _____, 2001.

Tricia L. Robello, L.S. #1246
Deputy County Surveyor
Sedgwick County, Kansas

Felicia A. Heredia

Entered on transfer record this _____ day of _____, 2001.

_____, County Clerk
Don Brace

State of Kansas) SS The foregoing instrument acknowledged before
Sedgwick County) me, this _____ day of _____, 2001, by Felicia A. Heredia,
a single person.

_____, Notary Public

My App't. Exp. _____

State of Kansas) SS This is to certify that this plat has been
Sedgwick County) filed for record in the office of the Register of Deeds, this _____ day
of _____, 2001 at _____ o'clock _____ M; and is duly recorded.

_____, Register of Deeds
Bill Meek

_____, Deputy
Linda Kizzire

- = #4 REBAR W/ "BAUGHMAN" CAP (SET)
- = #4 REBAR W/ CAP (FOUND)
- = #4 REBAR W/ "TILTS" CAP (FOUND)
- ⊗ = 3/4" IRON (FOUND)
- ⊙ = 1/2" IRON (FOUND)
- ⊠ = #8 REBAR (FOUND)



NOTE:
A MASTER GRADING PLAN FOR DRAINAGE HAS BEEN DEVELOPED FOR THIS SUBDIVISION AND IS ON FILE WITH THE CITY OF WICHITA, KANSAS. ALL DRAINAGE EASEMENTS, RIGHTS-OF-WAY, OR RESERVES SHALL REMAIN AT ESTABLISHED GRADES OR AS MODIFIED WITH THE APPROVAL OF THE CITY ENGINEER OF THE CITY OF WICHITA, KANSAS. NO OBSTRUCTIONS WHICH IMPEDE THE FLOW OF THIS DRAINAGE SYSTEM SHALL BE ALLOWED.

BENCHMARK:
CITY OF WICHITA BENCHMARK DISC - GREENWICH AND MT. VERNON (CLARK), EAST RIGHT-OF-WAY, NE CORNER OF DOUBLE "H" 112' ROCK.
ELEV. = 1339.11 NGVD
151.71 CITY DATUM

- (M) = MEASURED
- (P) = PLATTED
- (C) = CALCULATED
- (D) = DESCRIBED
- (C-D) = CALCULATED PER DESCRIBED INFO.
- (C-P) = CALCULATED PER PLATTED INFO.

NOTE:
BUTLER RURAL ELECTRIC COOPERATIVE ASSOCIATION, INC. RIGHT-OF-WAY EASEMENT FROM 1954, PAGE 2) COVERING LOT 1, BLOCK A, IS IN THE PROCESS OF BEING CONFIRMED, THIS 20TH DAY OF MARCH, 2001.