

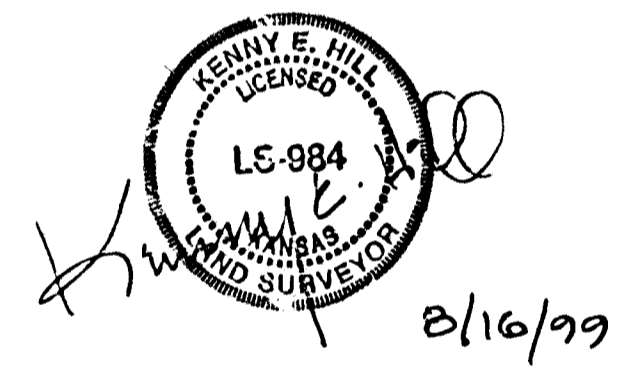
LINE TABLE		
LINE	LENGTH	BEARING
L1	220.87	N00°12'12"E
L2	304.96	S34°27'06"E
L3	232.01	S51°02'06"W
L4	346.16	S38°57'54"E
L5	172.28	N89°36'31"W
L6	296.04	S58°57'54"E
L7	224.47	N67°40'54"E
L8	177.02	N77°05'48"E
L9	170.43	N08°56'55"W
L10	176.90	N27°32'40"E
L11	137.76	N46°37'38"W
L12	41.92	S31°07'56"W
L13	168.51	N89°08'18"E

MINIMUM LOW OPENING ELEVATIONS	
Description	Low Opening Elevation
Lot 7, Block 3	1306.0
Lot 8, Block 3	1308.0
Lot 9, Block 3	1309.0
Lot 10, Block 3	1309.7
Lot 11, Block 3	1310.1
Lot 12, Block 3	1310.3
Lot 13, Block 3	1310.3

Elevations are to U.S. Datum

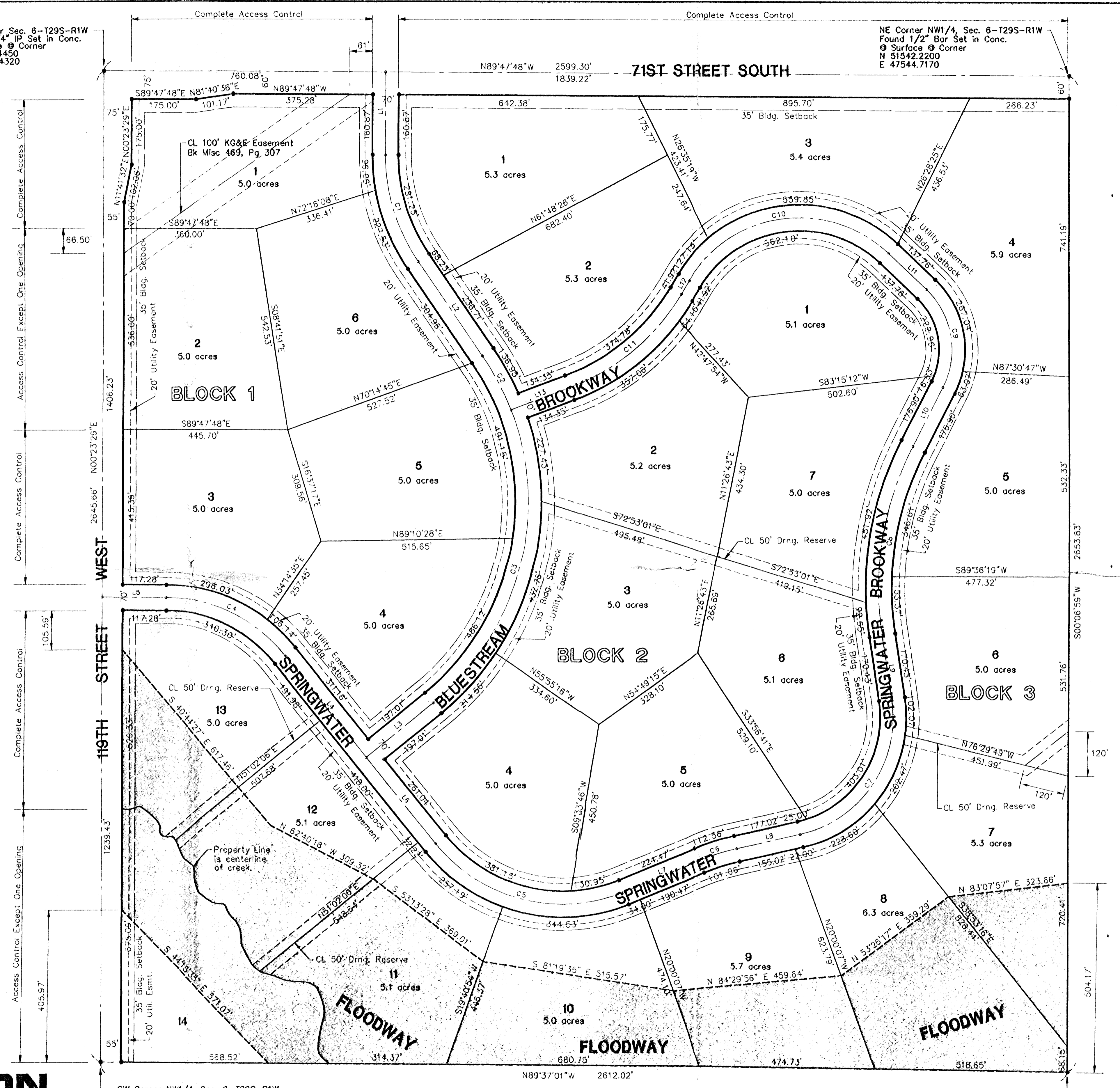
CURVE TABLE						
CURVE	LENGTH	RADIUS	TANGENT	DELTA	BEARING	CHORD
C1	302.42	500.00	156.00	34°39'18"	S17°07'27"E	297.83'
C2	163.66	690.00	82.22	13°35'23"	N27°39'24"W	163.27'
C3	865.84	690.00	500.36	71°53'48"	N15°05'12"E	810.14'
C4	371.24	420.00	198.73	50°38'37"	N64°17'13"W	359.27'
C5	556.91	435.00	323.96	73°21'12"	S75°38'30"E	519.65'
C6	106.81	650.00	53.53	09°24'54"	S72°23'21"W	106.69'
C7	480.57	320.00	298.64	86°02'43"	N34°04'27"E	436.66'
C8	522.28	820.00	270.34	36°29'35"	S09°17'52"W	513.49'
C9	284.80	220.00	166.30	74°10'18"	N09°32'29"W	265.32'
C10	624.55	350.00	434.07	102°14'26"	S82°15'09"W	544.93'
C11	398.00	600.00	306.63	38°00'21"	N50°08'01"E	390.74'

BENCHMARKS
 Brass Disc in N. Hubguard of RCBC, 420' W. of NE. Cor. Sec. 6. (From Co. Engineers Records) Elev. 1309.85
 60d Spike in power pole, 45' E. and 40' S. of N. 1/4 Cor. Sec. 6. (From Co. Engineers Records) Elev. 1315.39



SPRING CREEK 2ND ADDITION

TO SEDGWICK COUNTY, KANSAS



SW Corner NW1/4, Sec. 6-T29S-R1W
 Found 5/8" Bar 4" Deep @ Corner
 N 48903.8510
 E 44927.3650

Center Sec. 6-T29S-R1W
 Found 1" IP @ Corner
 N 48888.3910
 E 47539.3260