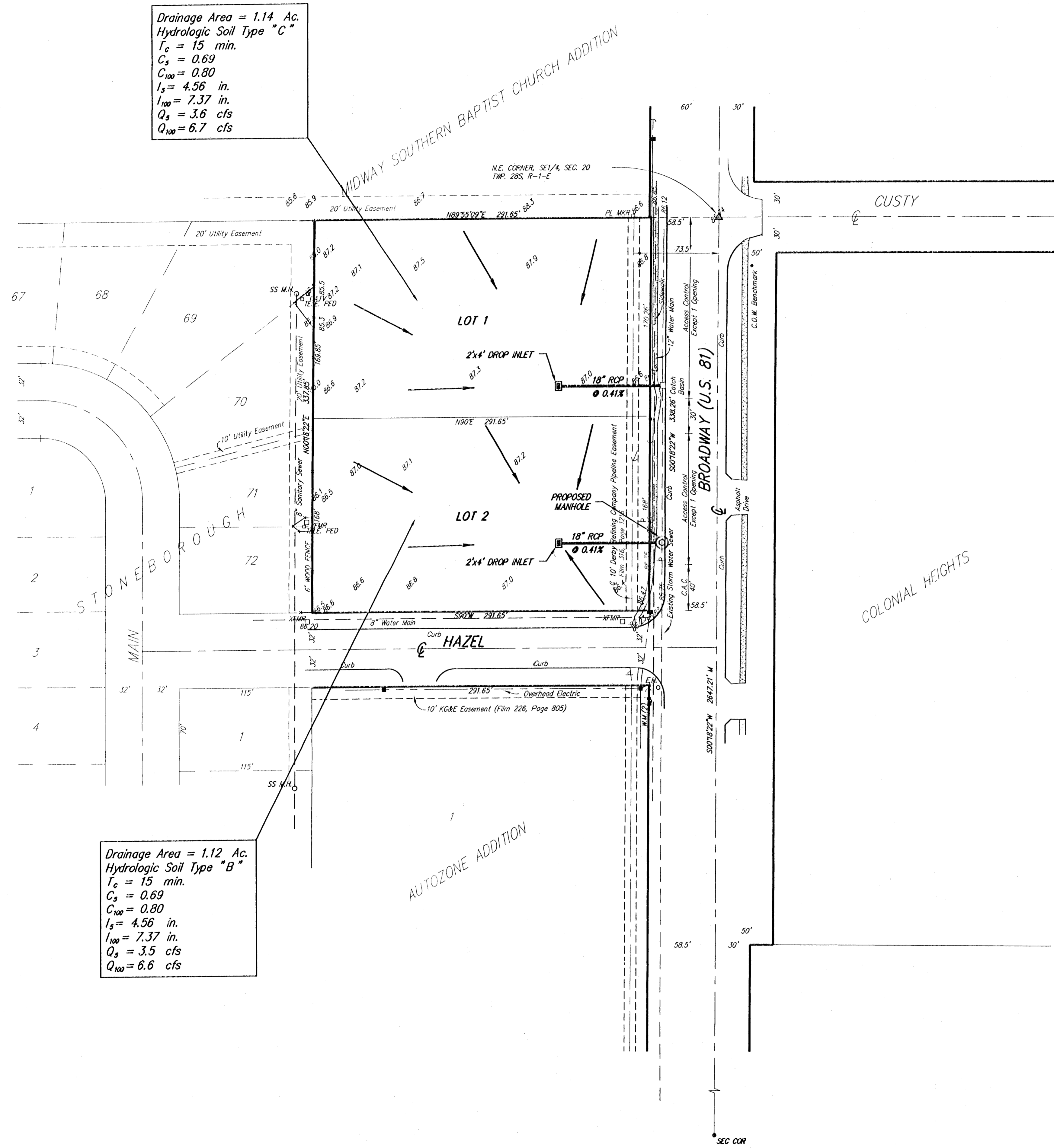


DRAINAGE PLAN STONEBOROUGH 2ND ADDITION

WICHITA, SEDGWICK COUNTY, KANSAS

Drainage Area = 1.14 Ac.
Hydrologic Soil Type "C"
 $T_c = 15$ min.
 $C_s = 0.69$
 $C_{100} = 0.80$
 $I_s = 4.56$ in.
 $I_{100} = 7.37$ in.
 $Q_s = 3.6$ cfs
 $Q_{100} = 6.7$ cfs



LEGAL DESCRIPTION:

That part of the SE1/4 of Sec. 20, Twp. 28-S, R-1-E of the 6th P.M., Sedgwick County, Kansas, described as commencing at the N.E. Corner of said SE1/4; thence S89°55'09"W, along the north line of said SE1/4, 58.50 feet for a place of beginning; thence S89°55'09"W, along the north line of said SE1/4, 291.60 feet; thence S00°18'22"W, parallel with the east line of said SE1/4, 337.85 feet; thence N90°E, 291.65 feet to a point 58.50 feet west of the east line of said SE1/4; thence N00°18'22"E, parallel with the east line of said SE1/4, 338.26 feet to the place of beginning.

OWNER:
Stoneborough Corp.
229 E. William
Wichita, KS 67202

GROSS AREA:
98592.55 Sq. Ft.±
2.26 Acres±

NET AREA LOT 1:
49596.05 Sq. Ft.±
1.14 Acres±

NET AREA LOT 2:
48996.50 Sq. Ft.±
1.12 Acres±

Drainage Area = 1.12 Ac.
Hydrologic Soil Type "B"
 $T_c = 15$ min.
 $C_s = 0.69$
 $C_{100} = 0.80$
 $I_s = 4.56$ in.
 $I_{100} = 7.37$ in.
 $Q_s = 3.5$ cfs
 $Q_{100} = 6.6$ cfs

SURVEY MARKER LEGEND

• SEC. COR. SECTION CORNER (FOUND)

UTILITY LEGEND

□ TELE. PED. TELEPHONE PEDESTAL

□ CATV CABLE TELEVISION PEDESTAL

□ F.H. FIRE HYDRANT

□ PL. MKR. PIPELINE MARKER

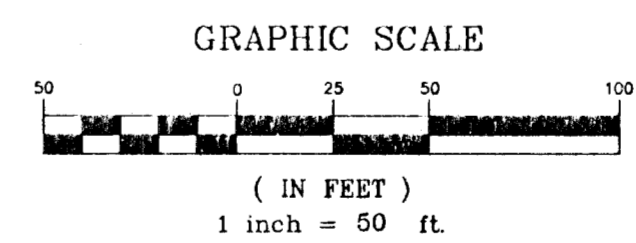
■ POWER POLE

■ HIGH LINE POLE

← DUY ANCHOR

□ SIGN

□ SS M.H. SANITARY SEWER MANHOLE



Elevation = City Datum

BENCH MARK:
47.5' E. & 41' S. OF THE SEC. COR.
AT CUSTY & BROADWAY
ELEV. = 86.82 CITY DATUM