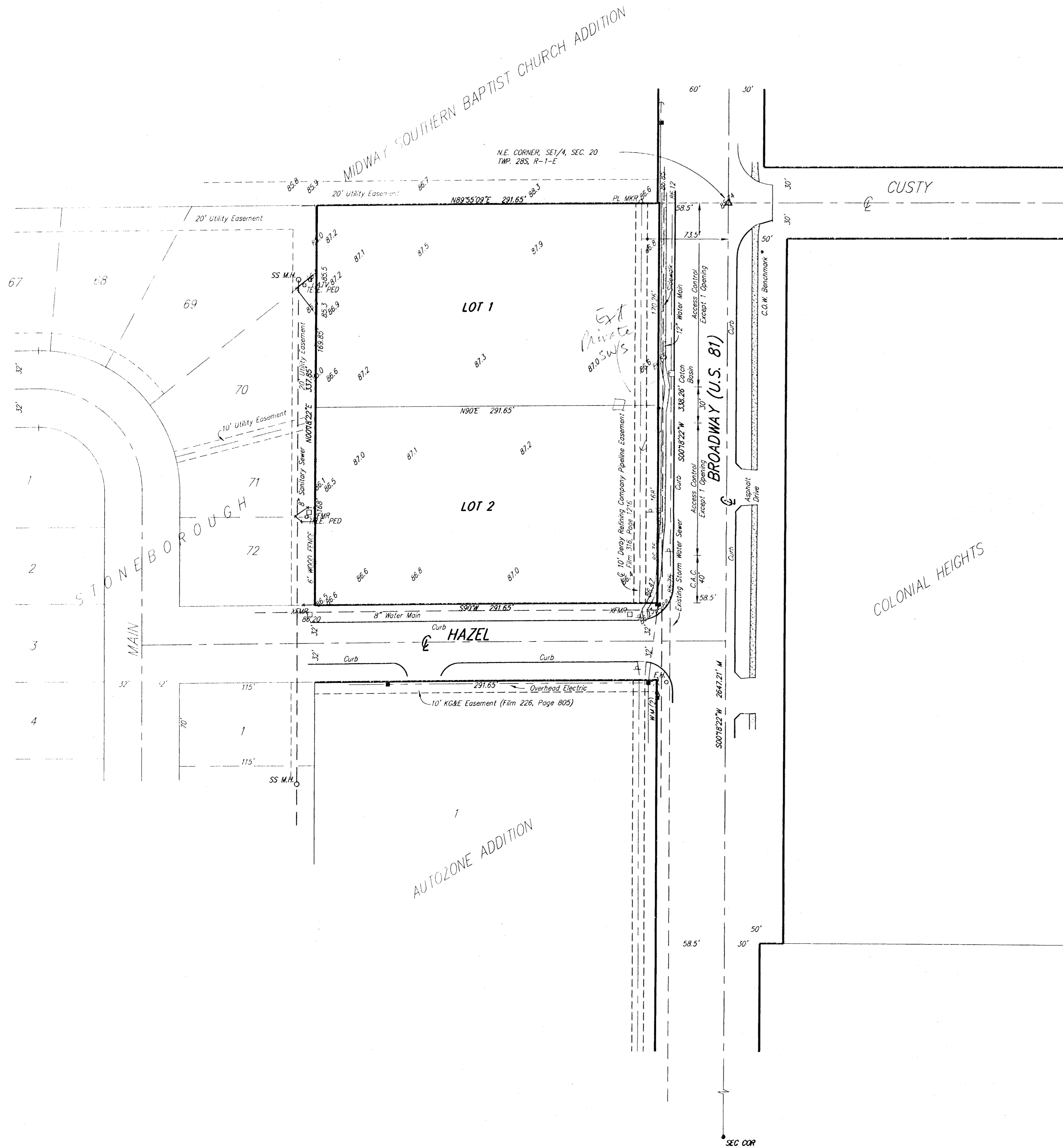


# SKETCH PLAT STONEBOROUGH 2ND ADDITION

WICHITA, SEDGWICK COUNTY, KANSAS



**LEGAL DESCRIPTION:**

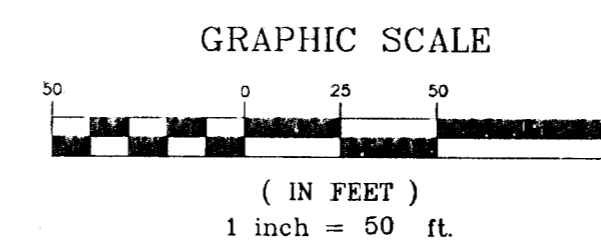
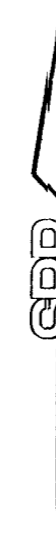
That part of the SE1/4 of Sec. 20, Twp. 28-S, R-1-E of the 6th P.M., Sedgwick County, Kansas, described as commencing at the N.E. Corner of said SE1/4; thence S89°55'09"W, along the north line of said SE1/4, 58.50 feet for a place of beginning; thence S89°55'09"W, along the north line of said SE1/4, 291.60 feet; thence S00°18'22"W, parallel with the east line of said SE1/4, 337.85 feet; thence N90°E, 291.65 feet to a point 58.50 feet west of the east line of said SE1/4; thence N00°18'22"E, parallel with the east line of said SE1/4, 338.26 feet to the place of beginning.

**OWNER:**  
Stoneborough Corp.  
229 E. William  
Wichita, KS 67202

**GROSS AREA:**  
98592.55 Sq. Ft.±  
2.26 Acres±

**NET AREA LOT 1:**  
49596.05 Sq. Ft.±  
1.14 Acres±

**NET AREA LOT 2:**  
48996.50 Sq. Ft.±  
1.12 Acres±



Elevation = City Datum

**BENCH MARK:**  
47.5' E. & 41' S. OF THE SEC. COR.  
AT CUSTY & BROADWAY  
ELEV. = 86.82 CITY DATUM

**SURVEY MARKER LEGEND**

• SEC COR. . . . . SECTION CORNER (FOUND)

**UTILITY LEGEND**

- TELE. PED . . . . . TELEPHONE PEDESTAL
- CATV . . . . . CABLE TELEVISION PEDESTAL
- F.H. . . . . FIRE HYDRANT
- PL MKR. . . . . PIPELINE MARKER
- . . . . . POWER POLE
- . . . . . HIGH LINE POLE
- ← . . . . . GUY ANCHOR
- . . . . . SIGN
- SS M.H. . . . . SANITARY SEWER MANHOLE



924 NORTH MAIN  
WICHITA, KANSAS 67203  
316-264-8008  
FAX 264-4621  
http://www.feist.com/~srb  
E-mail: srb@feist.com

DWG FILE: 015089-CX.  
PROJECT NO. 980158P

**SAVOY, RUGGLES & BOHM, P. A.**  
ENGINEERING & SURVEYING

OCTOBER 18, 1999