

STONEBOROUGH 2ND ADDITION

WICHITA, SEDGWICK COUNTY, KANSAS

State of Kansas) SS
Sedgwick County)

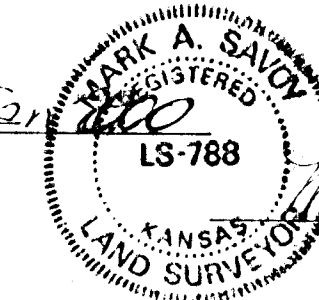
We, Savoy, Ruggles & Bohm, P.A., Surveyors in aforesaid county and state do hereby certify that, under the supervision of the undersigned, we have surveyed and platted "STONEBOROUGH 2ND ADDITION", Wichita, Sedgwick County, Kansas and that the accompanying plat is a true and correct exhibit of the property surveyed, described as follows:

That part of the SE1/4 of Sec. 20, Twp. 28-S, R-1-E of the 6th P.M., Sedgwick County, Kansas, described as commencing at the N.E. Corner of said SE1/4; thence S89°55'09"W, along the north line of said SE1/4, 58.50 feet for a place of beginning; thence S89°55'09"W, along the north line of said SE1/4, 291.65 feet; thence S00°18'22"W, parallel with the east line of said SE1/4, 337.85 feet; thence N90°E, 291.65 feet to a point 58.50 feet west of the east line of said SE1/4; thence N00°18'22"E, parallel with the east line of said SE1/4, 338.26 feet to the place of beginning.

All Public easements and dedications being vacated by virtue of K.S.A. 12-512(b).

Savoy, Ruggles & Bohm, P.A.

Date



Mark A. Savoy, Surveyor
Mark A. Savoy, RLS #788

Know all men by these presents that we, the undersigned, have caused the land described in the surveyors certificate to be platted into Lots and a Street to be known as "STONEBOROUGH 2ND ADDITION", Wichita, Sedgwick County, Kansas. The Street is hereby dedicated to and for the use of the public. Access controls are hereby granted to the City of Wichita as indicated on the face of the plat. A drainage plan has been developed for this plat and all drainage easements, rights-of-way, or reserves shall remain at established grades, or as modified with the approval of the City Engineer, and unobstructed to allow for the conveyance of stormwater.

Stoneborough Corporation

Randall J. Voth, President
Randall J. Voth

State of Kansas) SS
Sedgwick County)

The foregoing instrument acknowledged before me, this 4th day of January, 2000, by Randall J. Voth, President of Stoneborough Corporation, on behalf of the Corporation.

Linda S. Hamby, Notary Public

My App't. Exp. 10-30-03

This plat of "STONEBOROUGH 2ND ADDITION", Wichita, Sedgwick County, Kansas, has been submitted to and approved by the Wichita-Sedgwick County Metropolitan Area Planning Commission, Wichita, Kansas. Dated this ___ day of _____, 1999.

Wichita-Sedgwick County Metropolitan Area Planning Commission

Francis S. Gardalo, Chairman
Francis S. Gardalo

Marvin S. Krout, Secretary
Marvin S. Krout

Reviewed in accordance with K.S.A. 58-2005 on this 4th day of January, 2000

Tricia L. Robello, Deputy County Surveyor
Tricia L. Robello, LS #1246

This plat approved and all dedications shown hereon, accepted by the City Council of the City of Wichita, Kansas, this ___ day of _____, 2000.

Bob Knight, Mayor
Bob Knight

Pat Burnett, City Clerk
Pat Burnett

Entered on transfer record this ___ day of _____, 2000.

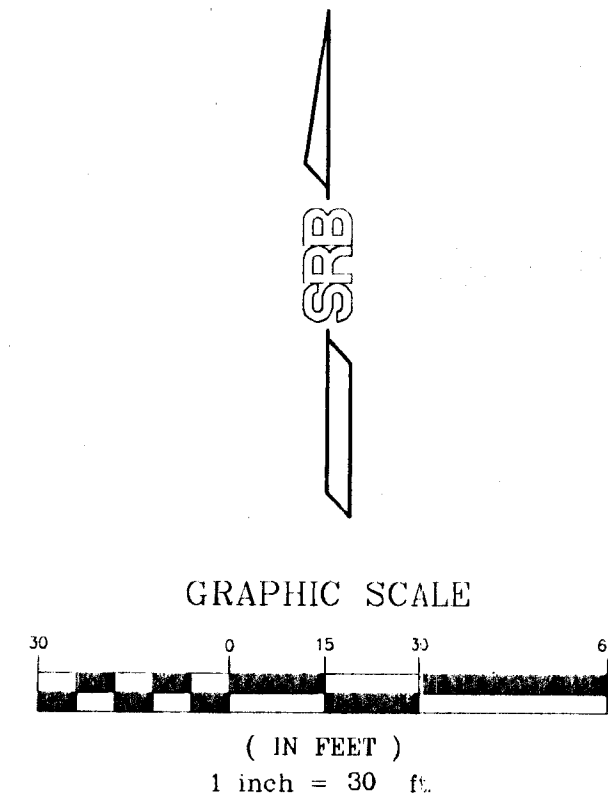
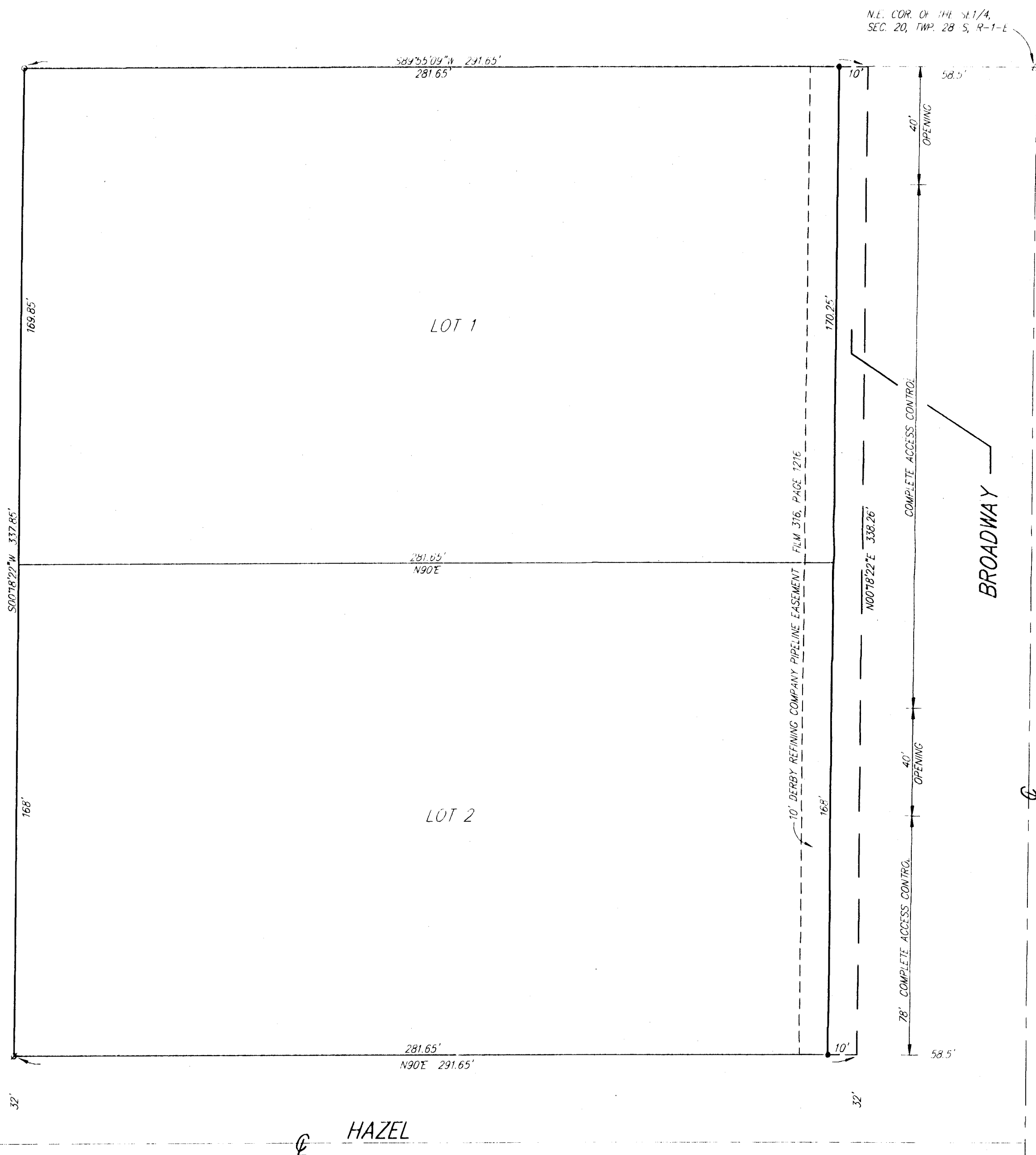
James Alford, County Clerk
James Alford

State of Kansas) SS
Sedgwick County)

This is to certify that this plat has been filed for record in the office of the Register of Deeds, this ___ day of _____, 2000, at ___ o'clock ___ M. and is duly recorded.

Bill Meek, Register of Deeds
Bill Meek

Linda Kizzire, Deputy
Linda Kizzire



- △ = 3/4" IRON PIPE IN 3" HOLE (FOUND)
- ⊙ = 1/2" IRON PIPE (FOUND)
- = 1/2" REBAR W/ANDER ON CAP (FOUND)
- = 1/2" REBAR W/SRD C.P. (SL 1)