

DRAINAGE PLAN STONEBOROUGH 3RD ADDITION WICHITA, SEDGWICK COUNTY, KANSAS

LEGAL DESCRIPTION:

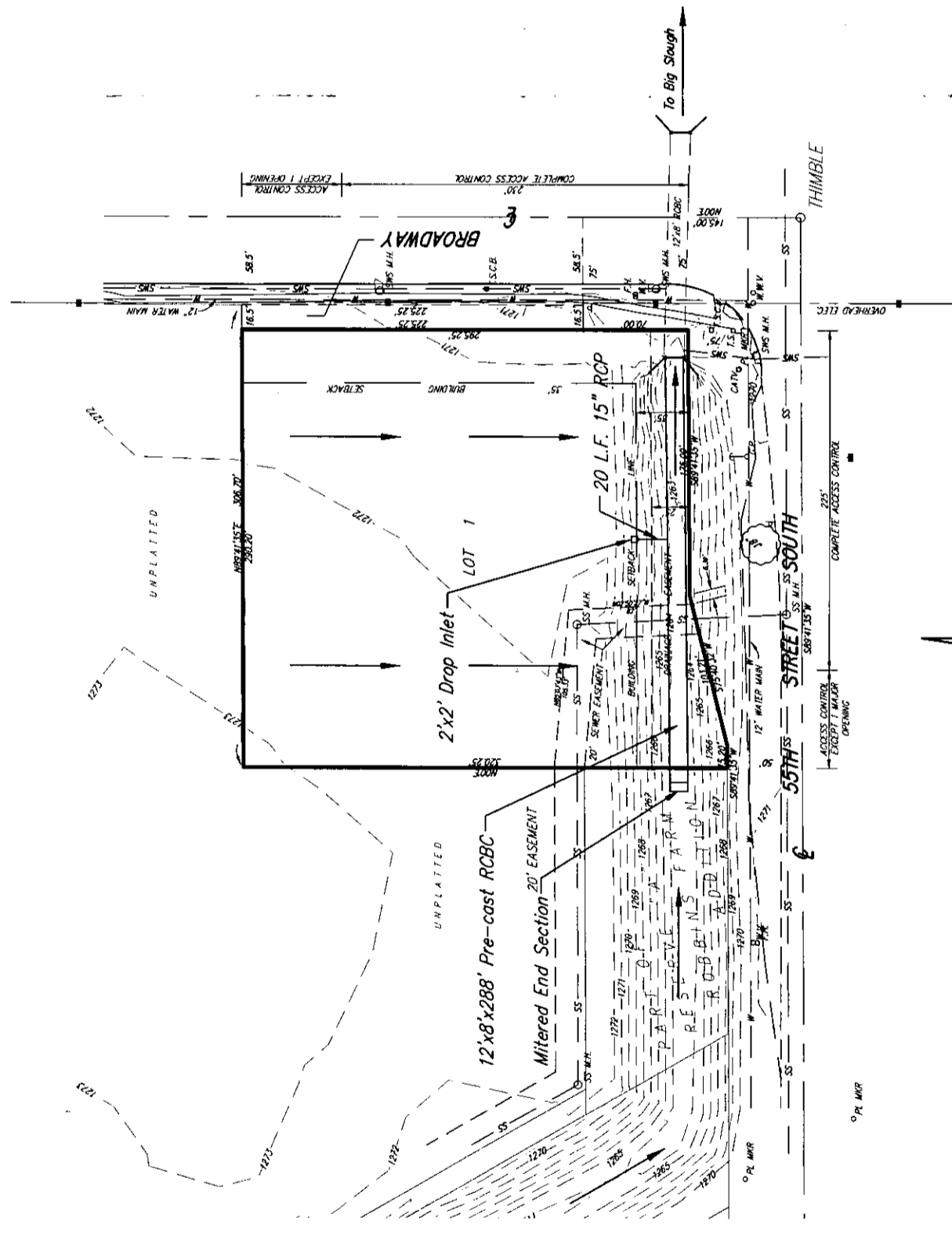
That part of Reserve A, Robbins Farm Addition, Wichita, Kansas, Sedgwick County, Kansas described as beginning at the S.E. Corner thereof; thence S89°41'35"W, along the south line of said Reserve A, 175 feet; thence S75°40'32"W, along the south line of said Reserve A, 103.21 feet; thence S89°41'35"W, along the south line of said Reserve A, 15.20 feet; thence N00°E, parallel with the east line of said Reserve A, 95 feet to the north line of said Reserve A; thence N89°41'35"E, along the north line of said Reserve A, 290.20 feet to the N.E. Corner of said Reserve A; thence S00°W, along the east line of said Reserve A, 70 feet to the place of beginning, and

That part of the SE1/4 of Sec. 20, Twp. 28-S, R-1-E of the 6th P.M., Sedgwick County, Kansas described as commencing at the S.E. Corner of said SE1/4; thence N00°E, along the east line of said SE1/4, 145 feet; thence S89°41'35"W, 58.50 feet for a place of beginning; thence N00°E, 225.25 feet; thence S89°41'35"W, parallel with the south line of said SE1/4, 306.70 feet; thence S00°W, parallel with the east line of said SE1/4, 225.25 feet to a point 145 feet north of the south line of said SE1/4; thence N89°41'35"E, 306.70 feet to the place of beginning.

OWNER:
Stoneborough Corp.
229 E. William
Wichita, KS 67202

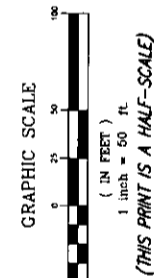
GROSS SIZE:
91,026.62 Sq. Ft. ±
2.090 Acres ±

NET SIZE:
87,310.25 Sq. Ft. ±
2.004 Acres ±



EXISTING	PROPOSED
Drainage Area = 2.0 Ac.	Drainage Area = 2.0 Ac.
Hydrologic Soil Type "D"	Hydrologic Soil Type "D"
T _c = 15 min.	T _c = 15 min.
C _s = 0.35	C _s = 0.85
C _{wp} = 0.65	C _{wp} = 0.91
I _s = 4.56 in.	I _s = 4.56 in.
I _{wp} = 7.37 in.	I _{wp} = 7.37 in.
Q ₁ = 3.2 cfs	Q ₁ = 7.8 cfs
Q _{wp} = 9.6 cfs	Q _{wp} = 13.4 cfs

NOTE:
Use parking lot detention on this site to reduce the 100 year peak discharge to 9.6 cfs from 13.4 cfs.
Approximate storage required is 7,695 cu. ft.
Ponding depth not to exceed 0.8 feet.



MINIMUM PAD ELEVATION FOR LOWEST OPENING = 1271 (M.S.L.)

BENCH MARK: CITY OF WICHITA STD. DISC
TOP OF HUBBUARD, N.W. CORNER OF R.C.B.C
55TH ST. SOUTH & BROADWAY
ELEV. = 1271.87 (M.S.L.)