

# SKETCH PLAT STONEBOROUGH 3RD ADDITION

WICHITA, SEDGWICK COUNTY, KANSAS

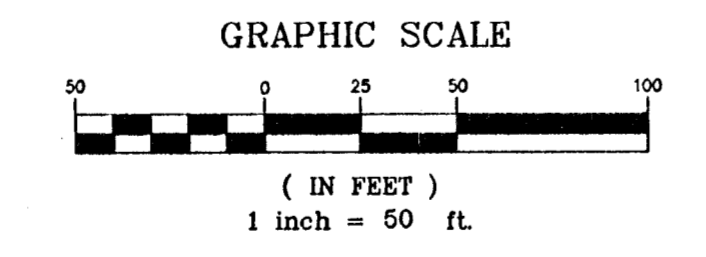
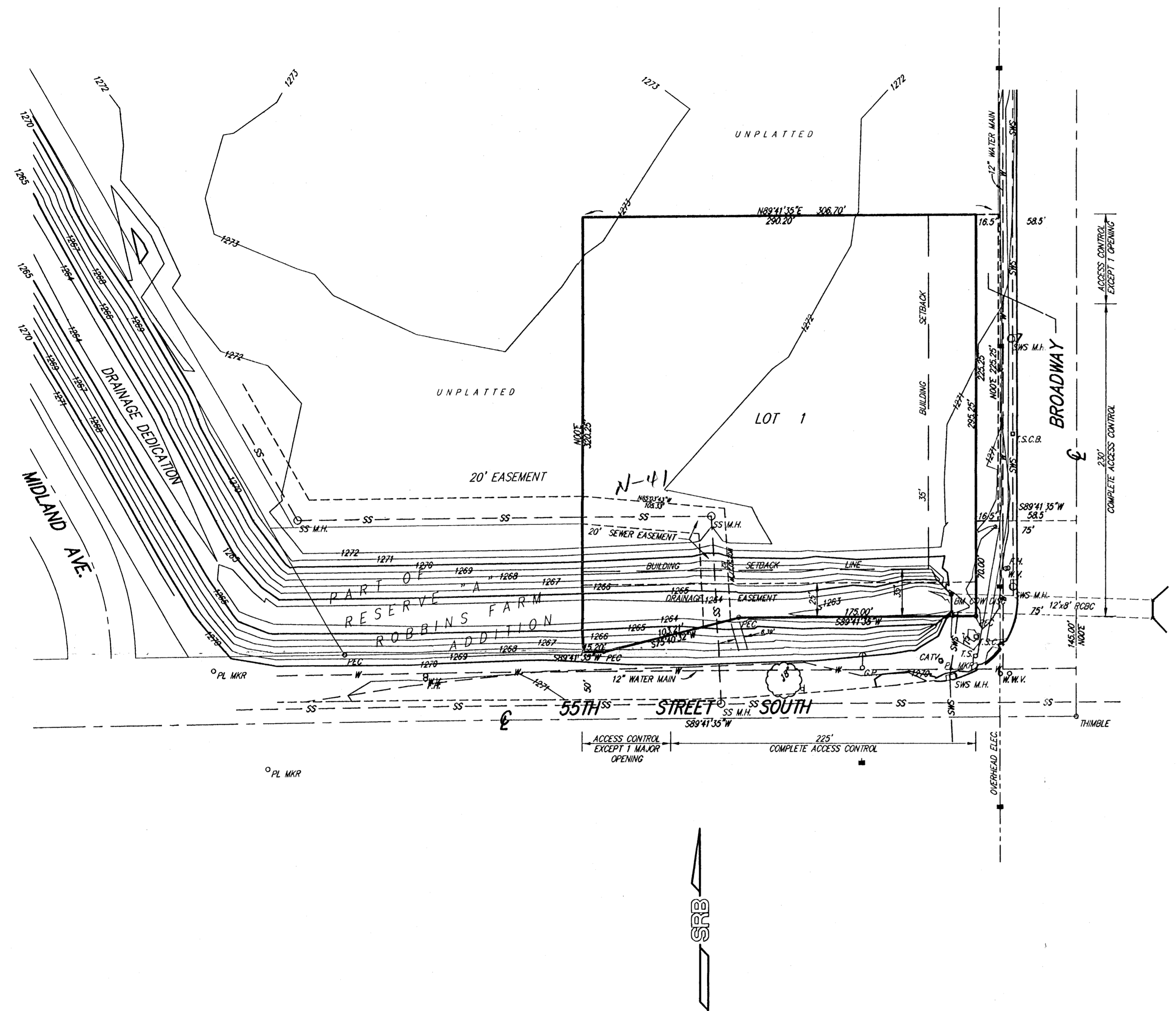
**LEGAL DESCRIPTION:**

That part of Reserve A, Robbins Farm Addition, Wichita, Kansas, Sedgwick County, Kansas described as beginning at the S.E. Corner thereof; thence S89°41'35"W, along the south line of said Reserve A, 175 feet; thence S75°40'32"W, along the south line of said Reserve A, 103.21 feet; thence S89°41'35"W, along the south line of said Reserve A, 15.20 feet; thence N00°E, parallel with the east line of said Reserve A, 95 feet to the north line of said Reserve A; thence N89°41'35"E, along the north line of said Reserve A, 290.20 feet to the N.E. Corner of said Reserve A; thence S00°W, along the east line of said Reserve A, 70 feet to the place of beginning, and  
That part of the SE1/4 of Sec. 20, Twp. 28-S, R-1-E of the 6th. P.M., Sedgwick County, Kansas described as commencing at the S.E. Corner of said SE1/4; thence N00°E, along the east line of said SE1/4, 145 feet; thence S89°41'35"W, 58.50 feet for a place of beginning; thence N00°E, 225.25 feet; thence S89°41'35"W, parallel with the south line of said SE1/4, 306.70 feet; thence S00°W, parallel with the east line of said SE1/4, 225.25 feet to a point 145 feet north of the south line of said SE1/4; thence N89°41'35"E, 306.70 feet to the place of beginning.

**OWNER:**  
Stoneborough Corp.  
229 E. William  
Wichita, KS 67202

**GROSS SIZE:**  
91,026.62 Sq. Ft.±  
2.090 Acres±

**NET SIZE:**  
87,310.25 Sq. Ft.±  
2.004 Acres±



MINIMUM PAD ELEVATION FOR LOWEST OPENING = 1271 (M.S.L.)

BENCH MARK: CITY OF WICHITA STD. DISC  
TOP OF HUBGUARD, N.W. CORNER OF R.C.B.C  
@ N.W. CORNER OF INTERSECTION  
55TH ST. SOUTH & BROADWAY  
ELEV.= 1271.87 (M.S.L.)