

# STONEBOROUGH 3RD ADDITION

WICHITA, SEDGWICK COUNTY, KANSAS

State of Kansas) SS  
Sedgwick County)

We, Savoy, Ruggles & Bohm, P.A., Surveyors in aforesaid county and state do hereby certify that, under the supervision of the undersigned, we have surveyed and platted "STONEBOROUGH 3RD ADDITION", Wichita, Sedgwick County, Kansas and that the accompanying plat is a true and correct exhibit of the property surveyed, described as and being a replat of:

That part of Reserve A, Robbins Farm Addition, Wichita, Kansas, Sedgwick County, Kansas described as beginning at the S.E. Corner thereof; thence S89°41'35"W along the south line of said Reserve A, 175 feet; thence S75°40'32"W along the south line of said Reserve A, 103.21 feet; thence S89°41'35"W along the south line of said Reserve A, 15.20 feet; thence N00°E, parallel with the east line of said Reserve A, 95 feet to the north line of said Reserve A; thence N89°41'35"E, along the north line of said Reserve A, 290.20 feet to the N.E. Corner of said Reserve A; thence S00°W along the east line of said Reserve A, 70 feet to the place of beginning, and

That part of the SE1/4 of Sec. 20, Twp. 28-S, R-1-E of the 6th. P.M., Sedgwick County, Kansas described as commencing at the S.E. Corner of said SE1/4; thence N00°E, along the east line of said SE1/4, 145 feet; thence S89°41'35"W, 58.50 feet for a place of beginning; thence N00°E, 225.25 feet; thence S89°41'35"W, parallel with the south line of said SE1/4, 306.70 feet; thence S00°W, parallel with the east line of said SE1/4, 225.25 feet to a point 145 feet north of the south line of said SE1/4; thence N89°41'35"E, 306.70 feet to the place of beginning.

All Public easements and dedications being vacated by virtue of K.S.A. 12-512(b).

Date 17 March 2000 Savoy, Ruggles & Bohm, P.A.  
Surveyor  
Mark A. Savoy, PLS #788

Know all men by these presents that we, the undersigned, have caused the land described in the surveyors certificate to be platted into a Lot and a Street to be known as "STONEBOROUGH 3RD ADDITION", Wichita, Sedgwick County, Kansas. The Street is hereby dedicated to and for the use of the public. Access controls are hereby granted to the City of Wichita as indicated on the face of the plat. A drainage plan has been developed for this plat and all drainage easements, rights-of-way, or reserves shall remain at established grades, or as modified with the approval of the City Engineer, and unobstructed to allow for the conveyance of stormwater. The Minimum Pad Elevation for lowest opening is as shown on the face of the plat.

Stoneborough Corporation

Randall J. Voth President  
Randall J. Voth

State of Kansas) SS  
Sedgwick County)

The foregoing instrument acknowledged before me, this 20th day of March, 2000, by Randall J. Voth, President of Stoneborough Corporation, on behalf of the Corporation.

Linda S. Hamby Notary Public

My App't. Exp. 12-30-03

LINDA S. HAMBY  
NOTARY PUBLIC  
STATE OF KANSAS

This plat of "STONEBOROUGH 3RD ADDITION", Wichita, Sedgwick County, Kansas, has been submitted to and approved by the Wichita-Sedgwick County Metropolitan Area Planning Commission, Wichita, Kansas. Dated this \_\_\_ day of \_\_\_\_\_, 2000.

Wichita-Sedgwick County Metropolitan Area Planning Commission

\_\_\_\_\_  
Francis S. Garofalo Chairman

\_\_\_\_\_  
Marvin S. Krout Secretary

Reviewed in accordance with K.S.A. 58-2005 on this \_\_\_ day of \_\_\_\_\_, 2000

\_\_\_\_\_  
Deputy County Surveyor  
Tricia L. Robello, LS #1246

This plat approved and all dedications shown hereon, accepted by the City Council of the City of Wichita, Kansas, this \_\_\_ day of \_\_\_\_\_, 2000.

\_\_\_\_\_  
Bob Knight Mayor

\_\_\_\_\_  
Pat Burnett City Clerk

Entered on transfer record this \_\_\_ day of \_\_\_\_\_, 2000.

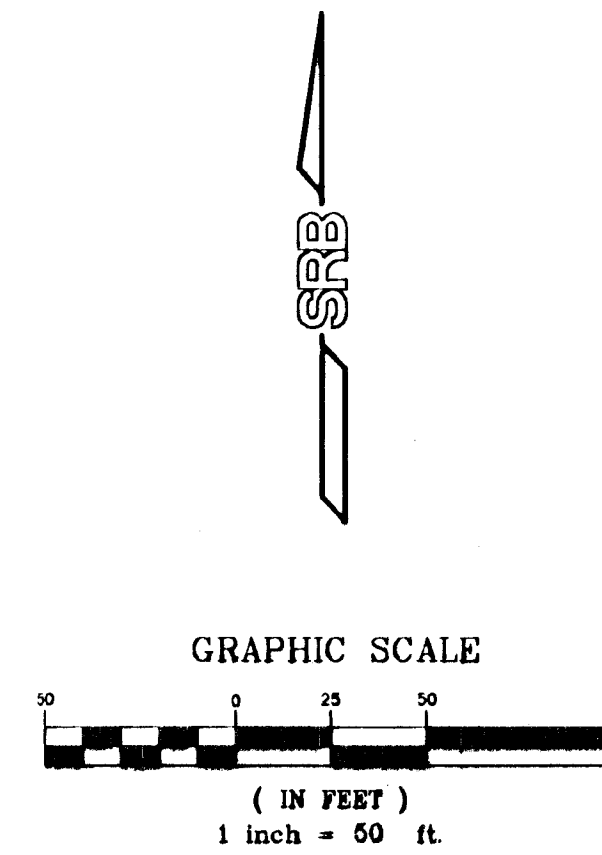
\_\_\_\_\_  
James Alford County Clerk

State of Kansas) SS  
Sedgwick County)

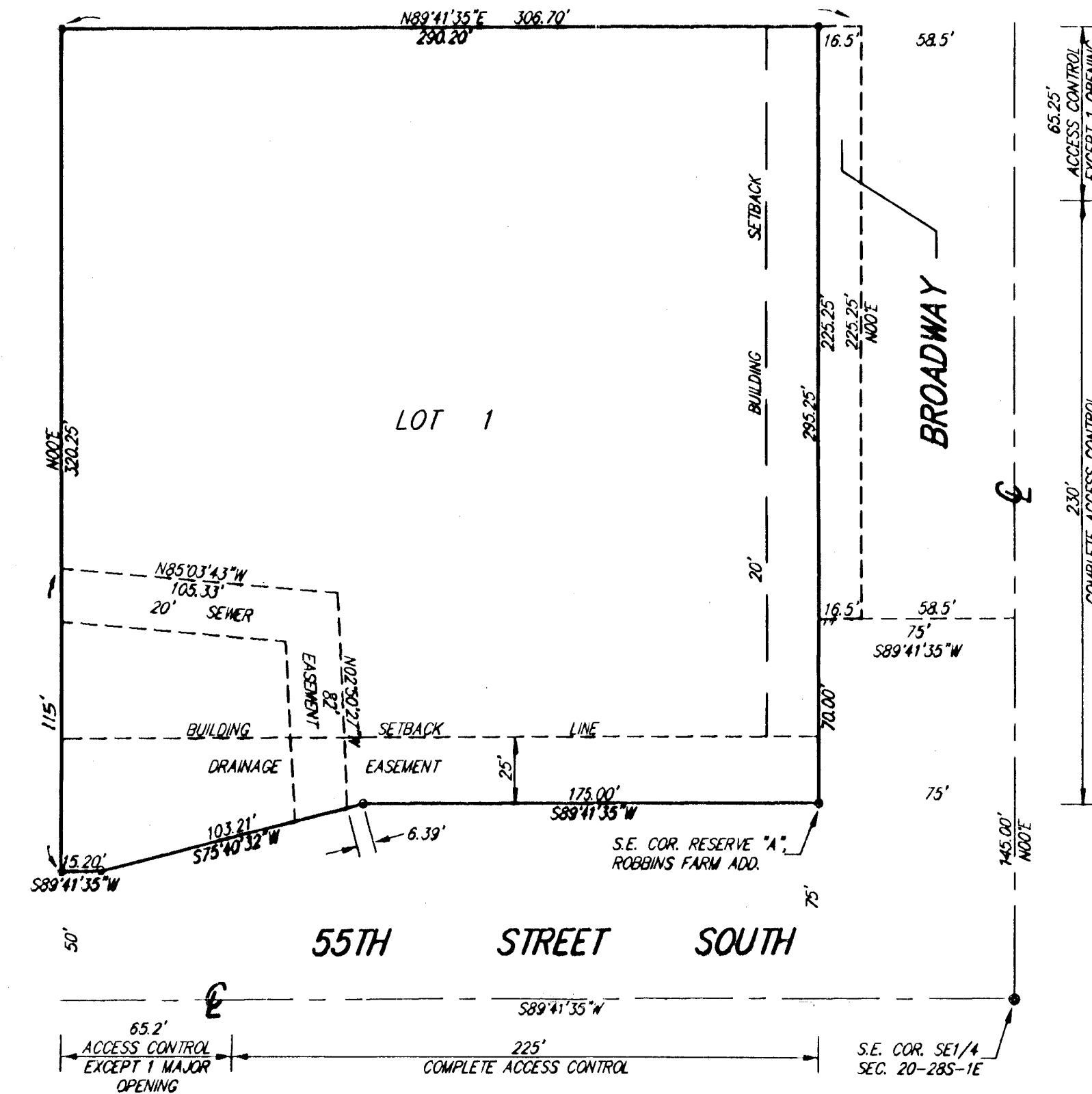
This is to certify that this plat has been filed for record in the office of the Register of Deeds, this \_\_\_ day of \_\_\_\_\_, 2000, at \_\_\_ o'clock \_\_\_ M.; and is duly recorded.

\_\_\_\_\_  
Bill Meek Register of Deeds

\_\_\_\_\_  
Linda Kizzire Deputy



- = CITY OF WICHITA CAST IRON THIMBLE (FOUND)
- = 1/2" REBAR W/PEC CAP (FOUND)
- = 1/2" REBAR W/SRB CAP (SET)



MINIMUM PAD ELEVATION FOR LOWEST OPENING = 1271 (M.S.L.)

BENCH MARK: CITY OF WICHITA STD. DISC  
TOP OF HUBBUARD, N.W. CORNER OF R.C.B.C.  
● N.W. CORNER OF INTERSECTION  
55TH ST. SOUTH & BROADWAY  
ELEV. = 1271.87 (M.S.L.)

DWG FILE: 01566P-R.C.  
PROJECT NO. 99.01566P

SRB

924 NORTH MAIN  
WICHITA, KANSAS 67203  
http://www.feist.com/~srb

316-264-8008  
FAX 264-4621  
E-mail: srb@feist.com

SAVOY, RUGGLES & BOHM, P.A.  
ENGINEERING & SURVEYING