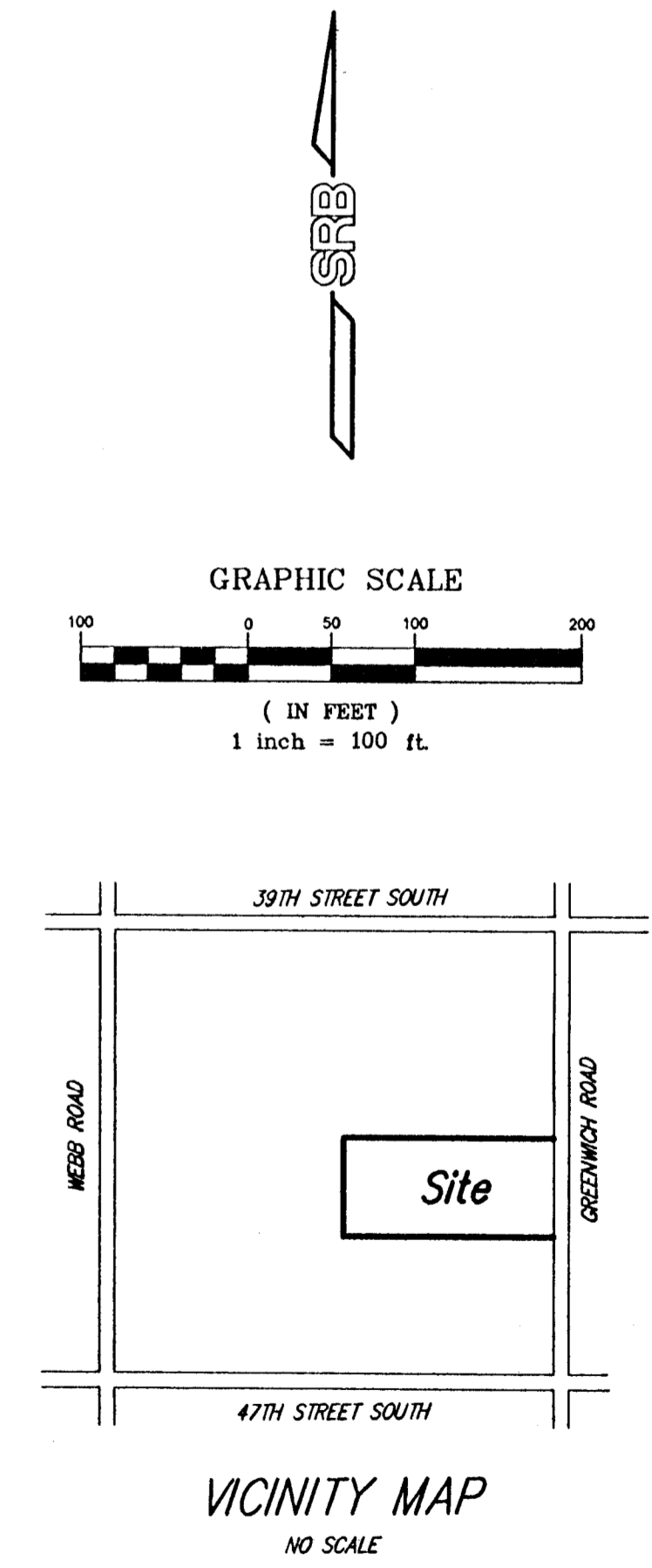
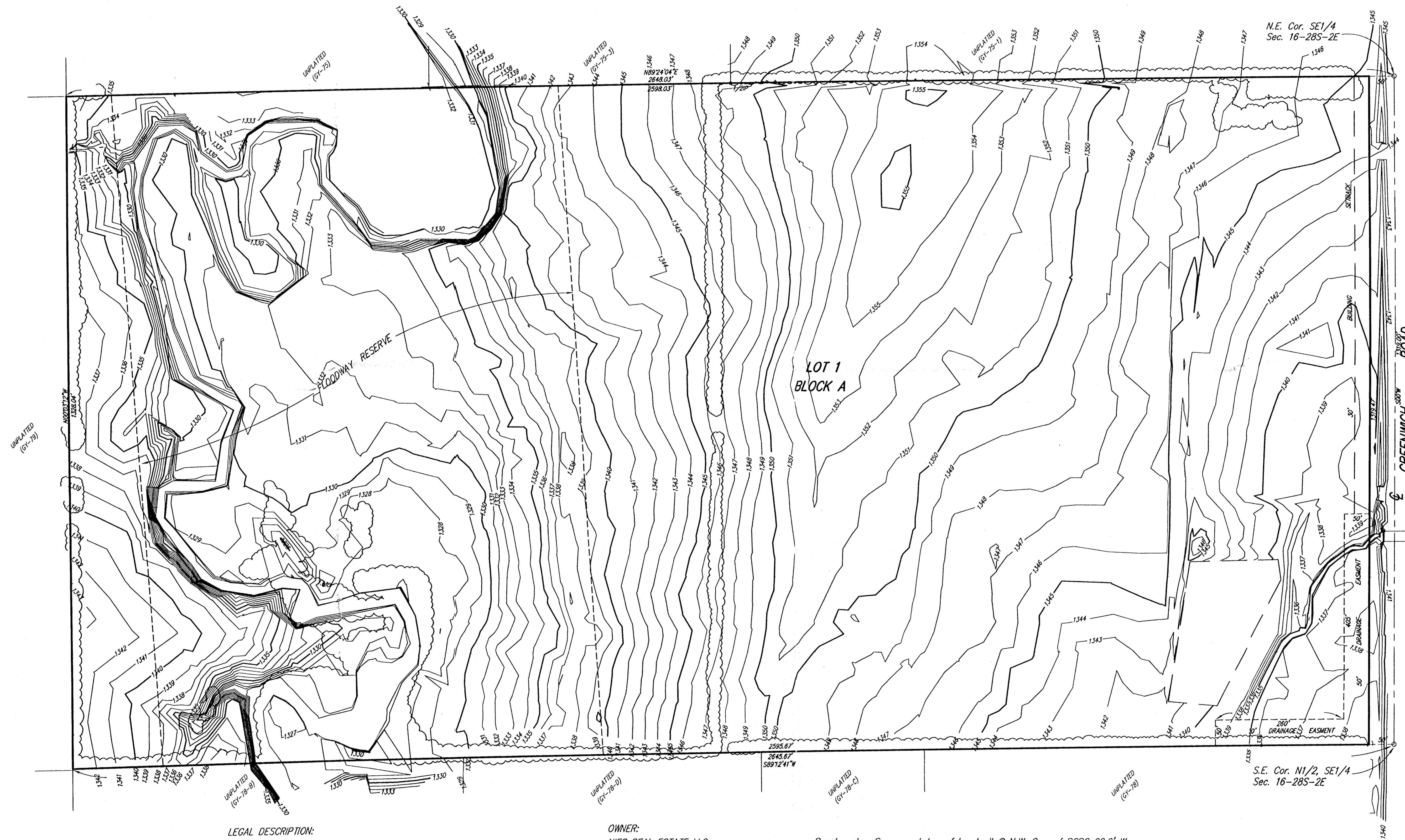


PRELIMINARY PLAT STONEGATE PARK

AN ADDITION TO SEDGWICK COUNTY, KANSAS



LEGAL DESCRIPTION:
The N1/2 of the SE1/4 of Sec. 16, TWP. 28-S, R2E of the 6th P.M., Sedgwick County, Kansas.
Gross Size: 3,503,338.23 SQ. FT. OR 80.43 ACRES
Net Size: 3,437,368.84 SQ. FT. OR 78.91 ACRES

OWNER:
NIES REAL ESTATE LLC.
9415 E. HARRY
WICHITA, KANSAS 67207
(316) 684-0161

Benchmark: Square cut top of headwall @ N.W. Cor. of RCBC 22.6' W. and 898.6' S. of the NE Cor., SE1/4, Sec. 16, TWP. 28-S, R2E, Sedgwick County, Kansas. Elevation= 1341.98 MSL

DWG FILE: 01232P-R.L
PROJECT NO. 98L01232P

SRB 924 NORTH MAIN
WICHITA, KANSAS 67203
http://www.feist.com/~srb
SAVOY, RUGGLES & BOHM, P. A.
ENGINEERING & SURVEYING

316-264-8008
FAX 264-4621
E-mail: srbo@feist.com

13 JAN 00