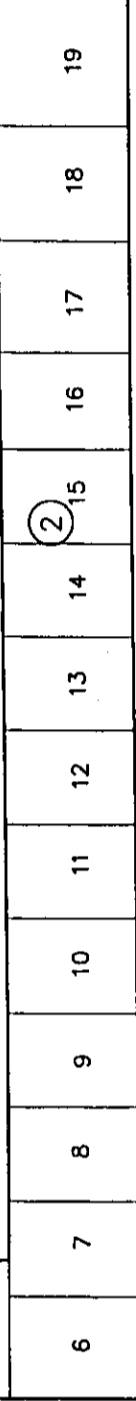
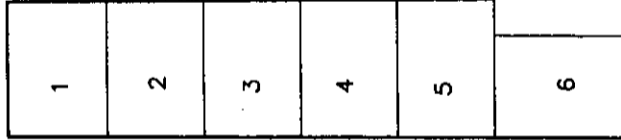
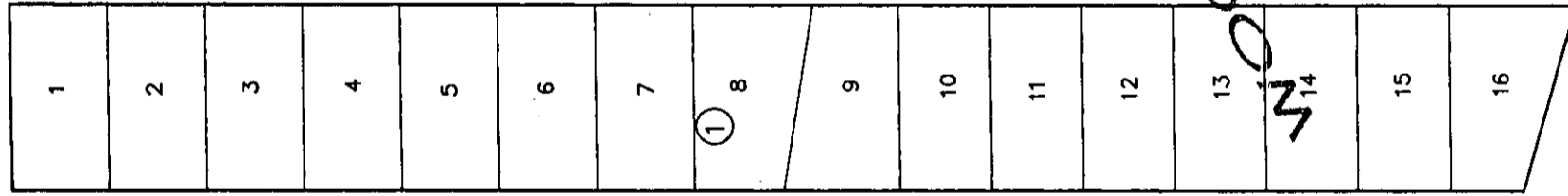
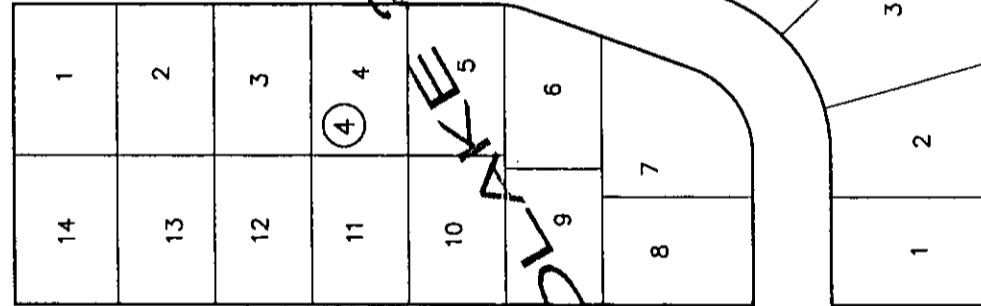


2nd Street North



1ST STREET



SHERIDAN

MT. CARMEL

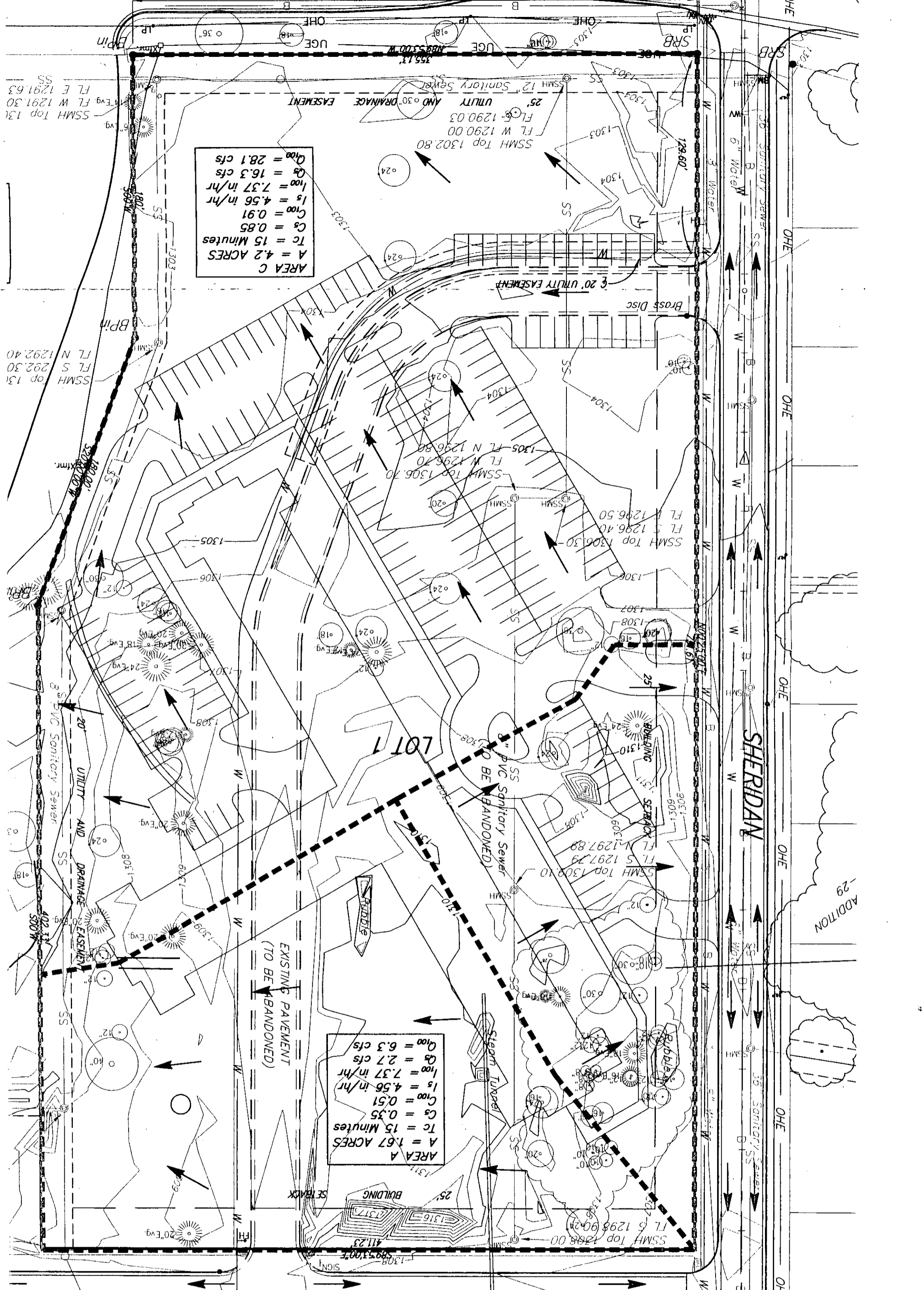
DOUGLAS

Sheridan from the north line of Douglas to the south line of 2nd Street;  
 Mt. Carmel from the east line of Sheridan to the south line of 1st Street;  
 1st Street from the east line of Sheridan to the west line of St. Paul, and;  
 Sidewalks on one side of each street.  
 North of Douglas, West of Meridian  
 Project No. 472-83238 OCA No. 765637  
 Fractional Basis TAM October 24, 2000  
 OK RDC 10-24-02

ST. PAUL



COODLAKKE AND ADDITIONAL



-29 ADDITION

SHERIDAN

AREA A  
 A = 1.67 ACRES  
 $T_c = 15$  Minutes  
 $C_s = 0.35$   
 $C_{100} = 0.51$   
 $I_s = 4.56$  in/hr  
 $I_{100} = 7.37$  in/hr  
 $Q_2 = 2.7$  cfs  
 $Q_{100} = 6.3$  cfs

AREA C  
 A = 4.2 ACRES  
 $T_c = 15$  Minutes  
 $C_s = 0.85$   
 $C_{100} = 0.91$   
 $I_s = 4.56$  in/hr  
 $I_{100} = 7.37$  in/hr  
 $Q_2 = 16.3$  cfs  
 $Q_{100} = 28.1$  cfs