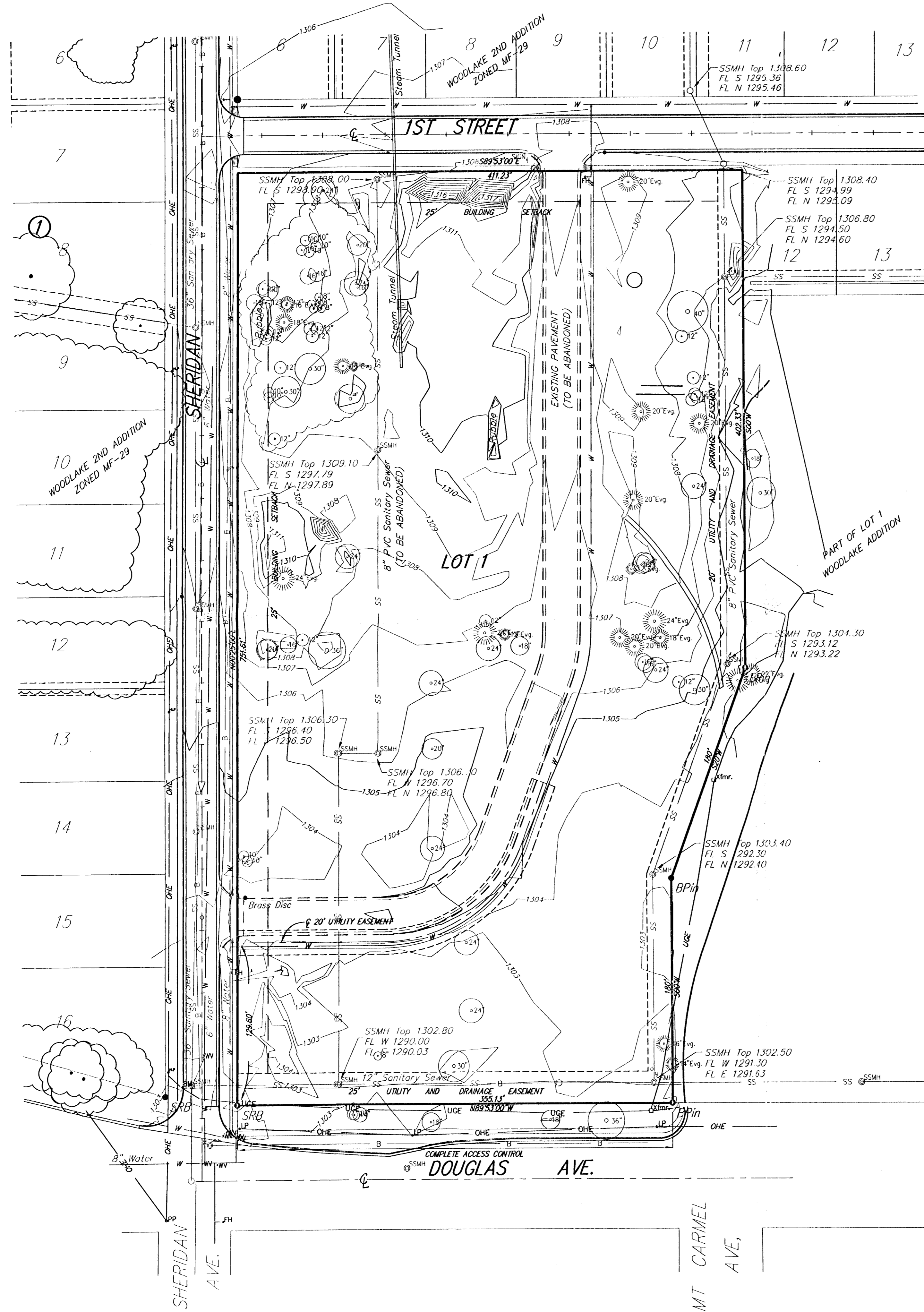


# PRELIMINARY PLAT STERLING POINTE ADDITION WICHITA, SEDGWICK COUNTY, KANSAS



**Legal Description:**

Lots 1, 2, 3, 4, 5, 6, 7, 8, 9, 10, and 11, Block 3, and Lots 1, 2, 3, 4, 5, 6, 7, 8, 9, 10, 11, 12, 13, and 14, Block 4, and all of Mt. Carmel lying south of the South line of 1st Street and lying East of the East Line of Sheridan, all as platted in Woodlake 2nd Addition, Wichita, Sedgwick County, Kansas.

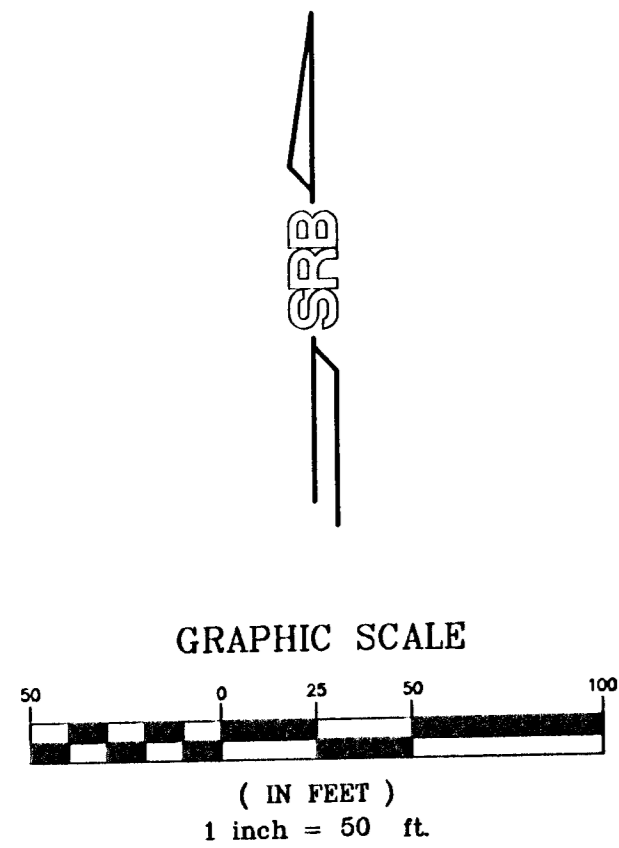
**OWNER:**

FORE STERLING POINTE LIMITED PARTANERSHIP  
1609 E. KALAMAZOO STREET, SUITE 10  
LANSING, MI 48912-2700  
(517) 374-7280

**GROSS AREA:**  
294843.59 Sq. Ft.  
6.77 Acres



VICINITY MAP  
NO SCALE



BENCH MARK: CITY OF WICHITA STD DISC  
41" N. OF CENTERLINE OF MAPLE & 26" W.  
OF CENTERLINE OF SHERIDAN.  
ELEV.=1301.44 NGVD