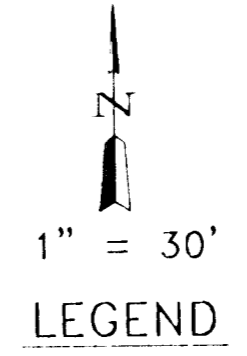
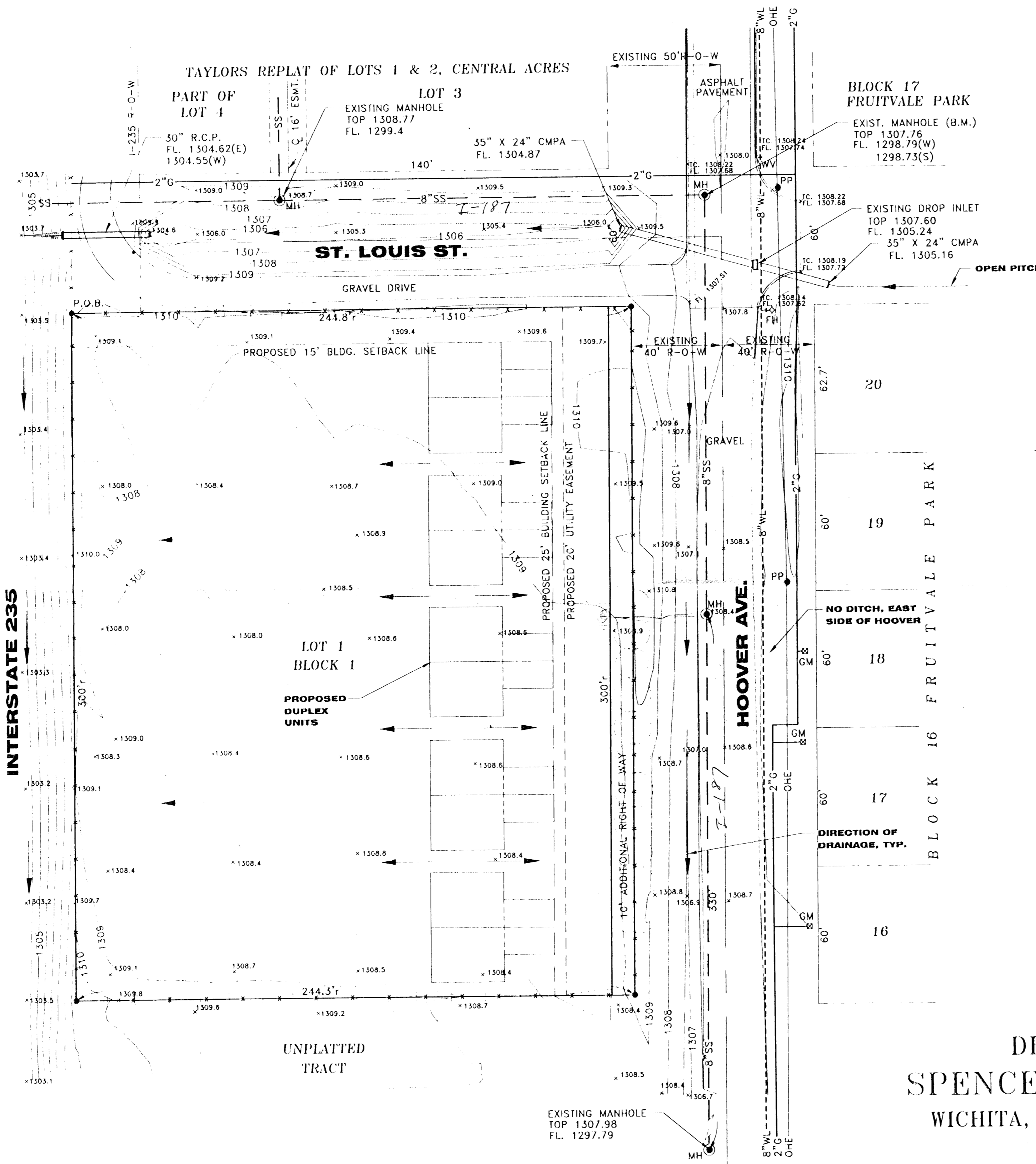


C:\033\_C\BURNETT\SPENCERS\_INCLDING\_G.E.



- LEGEND**
- WATER LINE --- WL ---
  - SANITARY SEWER --- SS ---
  - GAS LINE --- G ---
  - OVERHEAD ELECTRIC --- OHE ---
  - PP = POWER POLE
  - ⊙ MH = SANITARY SEWER MANHOLE
  - ⋄ FH = FIRE HYDRANT
  - ⊗ GM = GAS METER
  - FENCE --- x --- x --- x ---
  - r = RECORD DISTANCE
  - m = MEASURED DISTANCE
  - P.O.B. = POINT OF BEGINNING
  - ▶ DIRECTION OF DRAINAGE

**NOTES:**

1. LEGAL DESCRIPTION:  
BEGINNING 248.8 FEET WEST AND 30 FEET SOUTH OF THE NORTHEAST CORNER OF THE SOUTH HALF OF THE NORTHEAST QUARTER; THENCE EAST 244.8 FEET; THENCE SOUTH 300 FEET; THENCE WEST 244.3 FEET TO I-235 RIGHT OF WAY; THENCE NORTH TO THE BEGINNING IN SECTION 22, TOWNSHIP 27, RANGE 1 WEST, SEDGWICK COUNTY, KANSAS.
2. OWNER: CERTIFIED BUILDERS, INC.  
1143 DENENE  
WICHITA, KANSAS 67212
3. BENCH MARK: NORTH RIM OF SANITARY SEWER MANHOLE ⊙ INTERSECTION OF ST. LOUIS AND HOOVER. ELEV. 1307.76 m.s.l.
4. EXISTING ZONING: SF-5
5. PROPOSED ZONING: TF-3, TWO FAMILY DISTRICT WITH CONDITIONAL USE FOR MULTI-FAMILY
6. AREA: 1.68 ACRES

**DRAINAGE NOTES:**

1. PROPERTY IN FLOOD PLAIN ZONE DESIGNATION ZONE B.
2. HOOVER STREET FROM ST. LOUIS SOUTH TO 3RD STREET IS CURRENT BEING DESIGNED FOR THE CITY OF WICHITA BY YOUNG & ASSOCIATES.

**DRAINAGE CONCEPT  
SPENCER'S FIRST ADDITION  
WICHITA, SEDGWICK COUNTY, KANSAS  
2002**