

Final 9/10/03

LEGAL DESCRIPTION

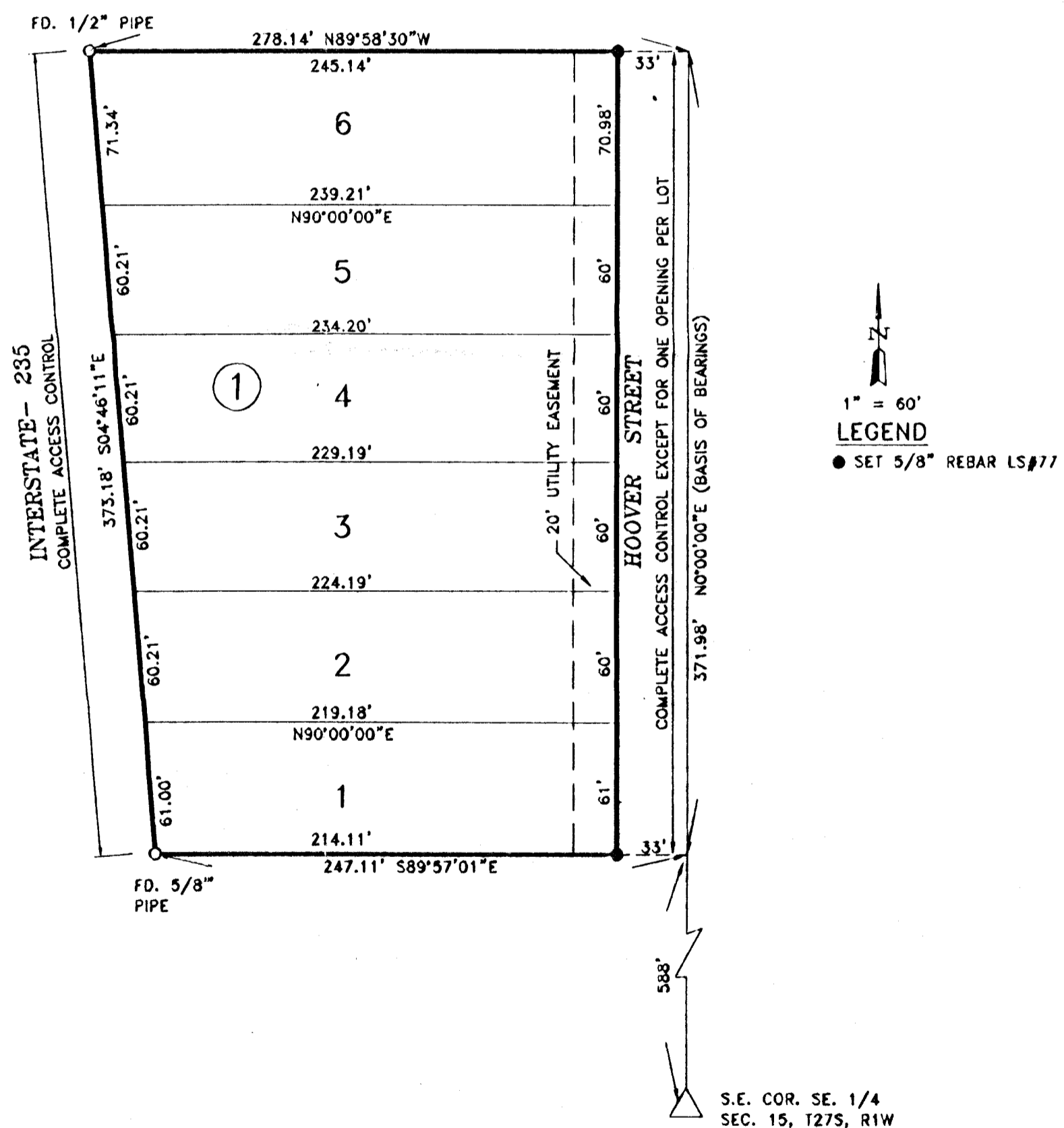
The south 28 rods of the Northeast Quarter of the Southeast Quarter of the Southeast Quarter of Section 15, Township 27 South, Range 1 West of the Sixth Principal Meridian, Sedgwick County, Kansas, except the south 90 feet thereof, and except that part condemned for I-235 Highway in Case #A-77196.

STATE OF KANSAS }
COUNTY OF SEDGWICK } SS

I, Adolf E. Reiss, being a duly licensed professional land surveyor in said County and State, do hereby certify that I have caused the tract of land as set forth in the Legal Description to be surveyed and platted and that said survey and the accompanying exhibit are true and correct to the best of my knowledge and information available.

Adolf E. Reiss
ADOLF E. REISS LS#77

9-3-03
DATE



1" = 60'
LEGEND
● SET 5/8" REBAR LS#77

FINAL PLAT
SPENCER'S 2ND ADDITION
WICHITA, SEDGWICK COUNTY, KANSAS
2003

Know all men by these presents that Certified Builders, Inc. has caused the tract of land as set forth in the Legal Description to be surveyed and platted into lots, a block and a street to be known as Spencer's 2nd Addition, Wichita, Sedgwick County, Kansas. The street is hereby dedicated to and for the use of the public. Easements are hereby granted as indicated for utility construction and maintenance. Access control as indicated on the face of the plat is hereby granted to the appropriate governing body. A drainage plan has been developed for the plat known as Spencer's 2nd Addition and all drainage easements, rights-of-way or reserves shall remain at established grades or as modified with the approval of the City Engineer and unobstructed to allow for the conveyance of stormwater.

CERTIFIED BUILDERS, INC.
Jeffery S. Niedens
JEFFERY S. NIEDENS

STATE OF KANSAS }
COUNTY OF SEDGWICK } SS

The foregoing instrument was acknowledged before me this 12th day of September, 2003, by Jeffery S. Niedens, President of Certified Builders, Inc., a Kansas Corporation, on behalf of the corporation.

Karee Mary Pughenders
KAREE MARY PUGHENDERS
Notary Public, State of Kansas
My Appointment Expires: 7-29-05

We, Prairie State Bank, holders of a mortgage on the above described property, do hereby consent to the plat of Spencer's 2nd Addition, Wichita, Sedgwick County, Kansas.
Mike S. Sikes
MIKE S. SIKES, Senior Vice President

STATE OF KANSAS }
COUNTY OF SEDGWICK } SS

The foregoing instrument was acknowledged before me this 10th day of September, 2003, by Mike S. Sikes, Senior Vice President of Prairie State Bank.

Karla D. Novacek
KARLA D. NOVACEK
Notary Public, State of Kansas
My Appointment Expires: 2-12-05

This plat of Spencer's 2nd Addition, Wichita, Sedgwick County, Kansas was submitted to and approved by the Wichita-Sedgwick County Metropolitan Area Planning Commission, Wichita, Kansas.

Dated this _____ day of _____, 2003.

BERNARD A. HENTZEN, Chair

JOHN L. SCHLEGEL, Secretary

Reviewed in accordance with K.S.A. 58-2005 on this _____ day of _____, 2003.

TRICIA L. ROBELLO, LS #1246
Deputy County Surveyor
Sedgwick County, Kansas

This plat has been approved and accepted by the City Council of the City of Wichita, Kansas, this _____ day of _____, 2003.

CARLOS MAYANS, Mayor

PAT GRAVES, City Clerk

Enlarged on transfer record this _____ day of _____, 2003.

DON BRACE, County Clerk

STATE OF KANSAS }
COUNTY OF SEDGWICK } SS

This is to certify that this instrument was filed for record in the Register of Deeds Office at _____ o'clock _____ M. on this _____ day of _____, 2003.

BILL WEEK, Register of Deeds

LINDA RIZZIRE, Deputy