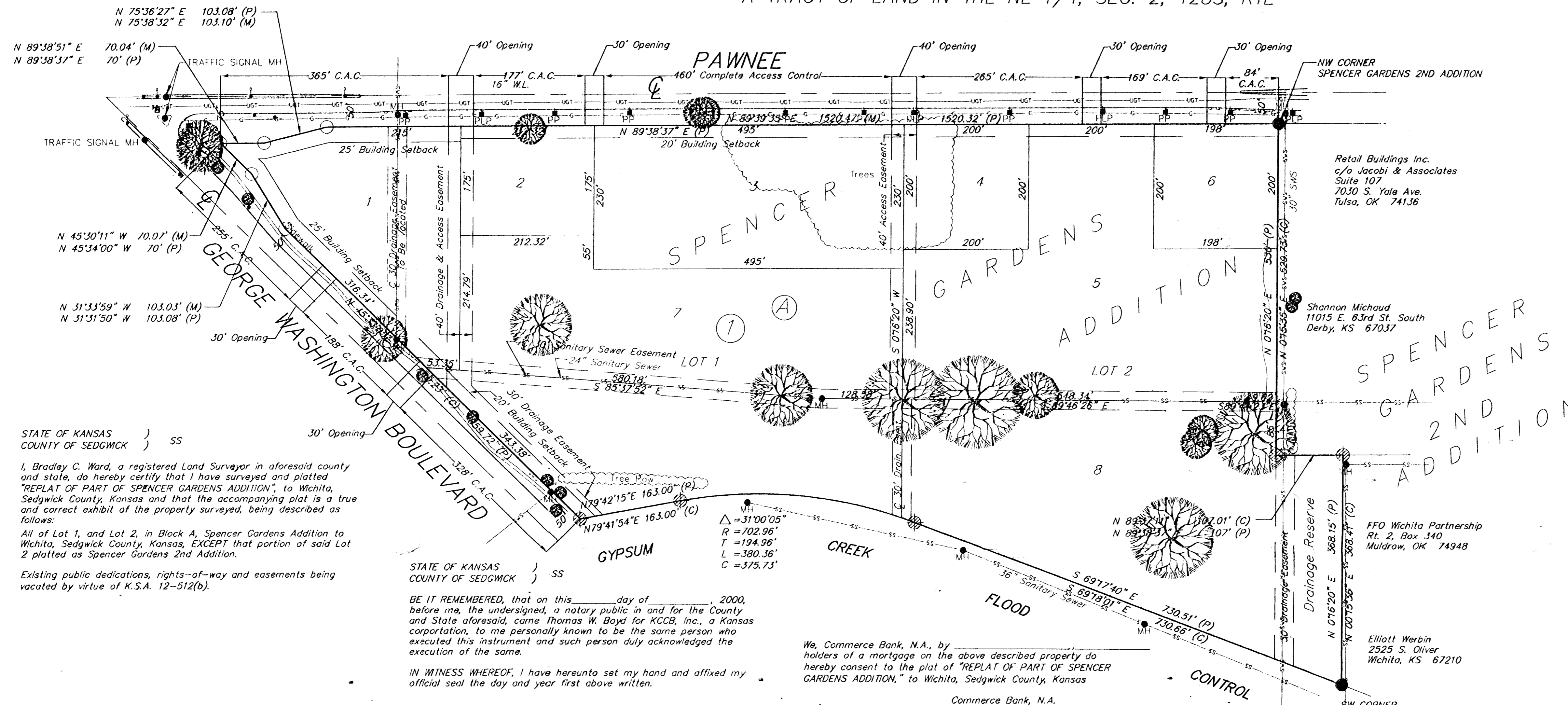
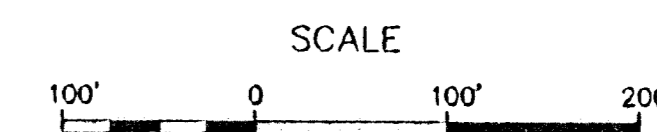


# REPLAT OF PART OF SPENCER GARDENS ADDITION WICHITA, SEDGWICK COUNTY, KANSAS

A TRACT OF LAND IN THE NE 1/4, SEC. 2, T28S, R1E



- LEGEND**
- Water Valve
  - Power Pole
  - Light Pole
  - Power & Light Pole
  - Guy Wire
  - Manhole
  - Tree
  - Sign
  - Fence
  - Underground Gas Line
  - Underground Telephone
  - Underground Storm Water Sewer
  - Underground Sanitary Sewer
  - 
  - 
  - 
  - Measured
  - Platted
  - Calculated

STATE OF KANSAS )  
COUNTY OF SEDGWICK ) SS

I, Bradley C. Ward, a registered Land Surveyor in aforesaid county and state, do hereby certify that I have surveyed and platted "REPLAT OF PART OF SPENCER GARDENS ADDITION", to Wichita, Sedgwick County, Kansas and that the accompanying plat is a true and correct exhibit of the property surveyed, being described as follows:

All of Lot 1, and Lot 2, in Block A, Spencer Gardens Addition to Wichita, Sedgwick County, Kansas and that the accompanying plat is a true and correct exhibit of the property surveyed, being described as follows:

Existing public dedications, rights-of-way and easements being vacated by virtue of K.S.A. 12-512(b).

STATE OF KANSAS )  
COUNTY OF SEDGWICK ) SS

BE IT REMEMBERED, that on this \_\_\_\_\_ day of \_\_\_\_\_, 2000, before me, the undersigned, a notary public in and for the County and State aforesaid, came Thomas W. Boyd for KCCB, Inc., a Kansas corporation, to me personally known to be the same person who executed this instrument and such person duly acknowledged the execution of the same.

IN WITNESS WHEREOF, I have hereunto set my hand and affixed my official seal the day and year first above written.

Notary Public \_\_\_\_\_  
My appointment expires: \_\_\_\_\_

We, Commerce Bank, N.A., by \_\_\_\_\_ holders of a mortgage on the above described property do hereby consent to the plat of "REPLAT OF PART OF SPENCER GARDENS ADDITION," to Wichita, Sedgwick County, Kansas

Commerce Bank, N.A.

STATE OF KANSAS )  
COUNTY OF SEDGWICK ) SS

BE IT REMEMBERED, that on this \_\_\_\_\_ day of \_\_\_\_\_, 2000, before me, the undersigned, a notary public in and for the County and State aforesaid, came \_\_\_\_\_, Commerce Bank, N.A., for and on behalf of said company, to me personally known to be the same person who executed this instrument and such person duly acknowledged the execution of the same.

IN WITNESS WHEREOF, I have hereunto set my hand and affixed my official seal the day and year first above written.

Notary Public \_\_\_\_\_  
My appointment expires: \_\_\_\_\_

STATE OF KANSAS )  
CITY OF WICHITA ) SS

This plat approved and all dedication shown hereon accepted by the City Council of the City of Wichita, Kansas, this \_\_\_\_\_ day of \_\_\_\_\_, 2000.

\_\_\_\_\_, Mayor  
\_\_\_\_\_, City Clerk

Entered on transfer record this \_\_\_\_\_ day of \_\_\_\_\_, 2000.

\_\_\_\_\_, County Clerk

STATE OF KANSAS )  
COUNTY OF SEDGWICK ) SS

Know all men by these presents, that we, the undersigned, have caused the land described in the surveyor's certificate to be platted into a Lots and a Block, to be known as "REPLAT OF PART OF SPENCER GARDENS ADDITION", to Wichita, Sedgwick County, Kansas. The access controls are hereby granted to the appropriate governing body as shown hereon. Drainage easements and sanitary sewer easements are hereby dedicated to the public for the purpose of operating, maintaining, constructing and repairing public improvements. The land contained herein is held and shall be conveyed subject to any restrictions, reservations, and covenants on file or hereafter filed in the office of the Register of Deeds of Sedgwick County, Kansas.

A drainage plan has been developed for the plat. All drainage easements, rights of way, or reserves shall remain at established grades or as modified with the approval of the applicable City or County Engineer, and unobstructed to allow for the conveyance of stormwater.

Date \_\_\_\_\_

Thomas W. Boyd, President  
KCCB, Inc., a Kansas corporation

Michael J. Boyd, Treasurer/Secretary  
KCCB, Inc., a Kansas corporation

STATE OF KANSAS )  
COUNTY OF SEDGWICK ) SS

BE IT REMEMBERED, that on this \_\_\_\_\_ day of \_\_\_\_\_, 2000, before me, the undersigned, a notary public in and for the County and State aforesaid, came Michael J. Boyd for KCCB, Inc., a Kansas corporation, to me personally known to be the same person who executed this instrument and such person duly acknowledged the execution of the same.

IN WITNESS WHEREOF, I have hereunto set my hand and affixed my official seal the day and year first above written.

Notary Public \_\_\_\_\_  
My appointment expires: \_\_\_\_\_

Reviewed in accordance with K.S.A. 58-2005 on this \_\_\_\_\_ day of \_\_\_\_\_, 2000.

Tricia L. Robello, LS #1246  
Deputy County Surveyor  
Sedgwick County Kansas

STATE OF KANSAS )  
CITY OF WICHITA ) SS

This plat of "REPLAT OF PART OF SPENCER GARDENS ADDITION", to Wichita, Sedgwick County, Kansas, has been submitted to and approved by the Wichita-Sedgwick County Metropolitan Area Planning Commission, Wichita, Kansas.

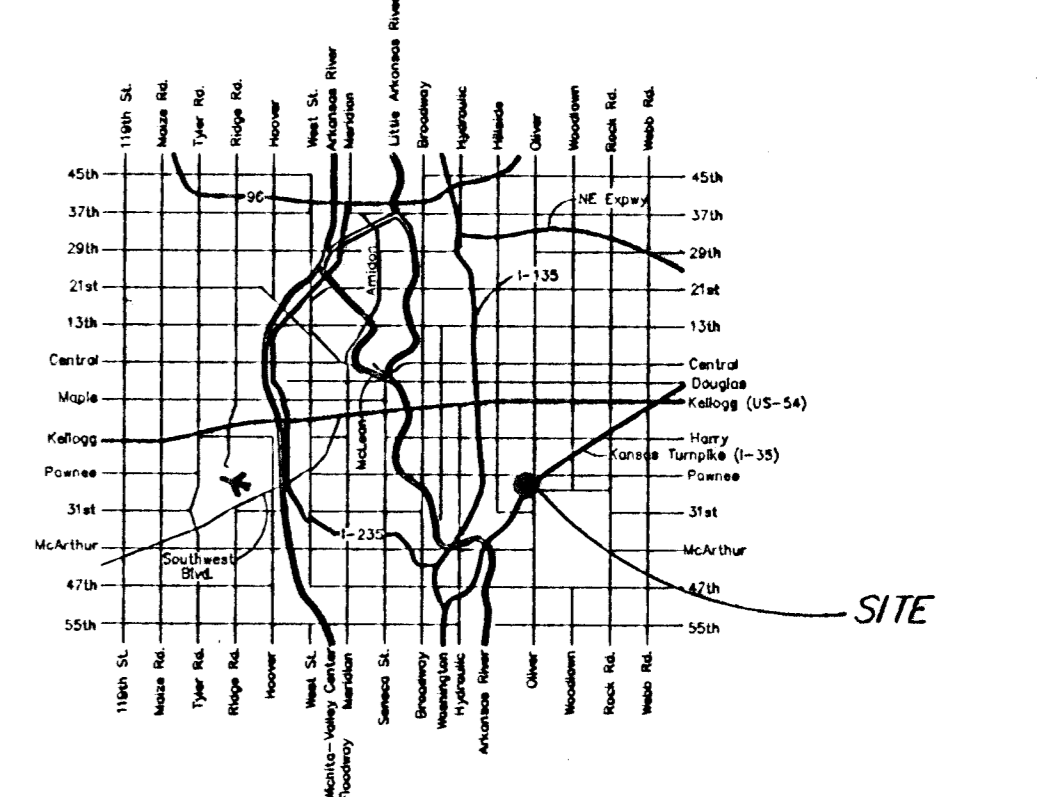
Dated this \_\_\_\_\_ day of \_\_\_\_\_, 2000,  
Wichita-Sedgwick County Metropolitan Area Planning Commission

\_\_\_\_\_, Chair  
\_\_\_\_\_, Secretary

STATE OF KANSAS )  
COUNTY OF SEDGWICK ) SS

This is to certify that this instrument was filed for record in the Register of Deeds Office, at \_\_\_\_\_ on the \_\_\_\_\_ day of \_\_\_\_\_, 2000, and is duly recorded.

\_\_\_\_\_, Register of Deeds  
\_\_\_\_\_, Deputy



LOCATION MAP

**NOTES:**

- This property is subject to the restrictions of Community Unit Plan D.P.-93, on file with the Metropolitan Area Planning Dept.
- The utility information shown is the best available at the time of the survey. The information was obtained through Kansas One-Call or utility records and no representations are made as to the actual depth and location of the utilities.

AUSTIN MILLER P.A.  
ENGINEERING SERVICES  
355 N. Waco, Suite 200, Wichita, KS 67202  
316/282-1281 Fax: 316/282-6773