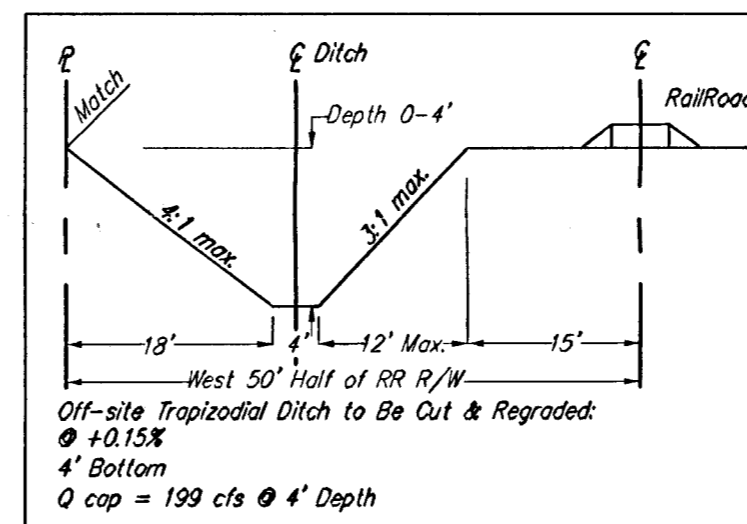
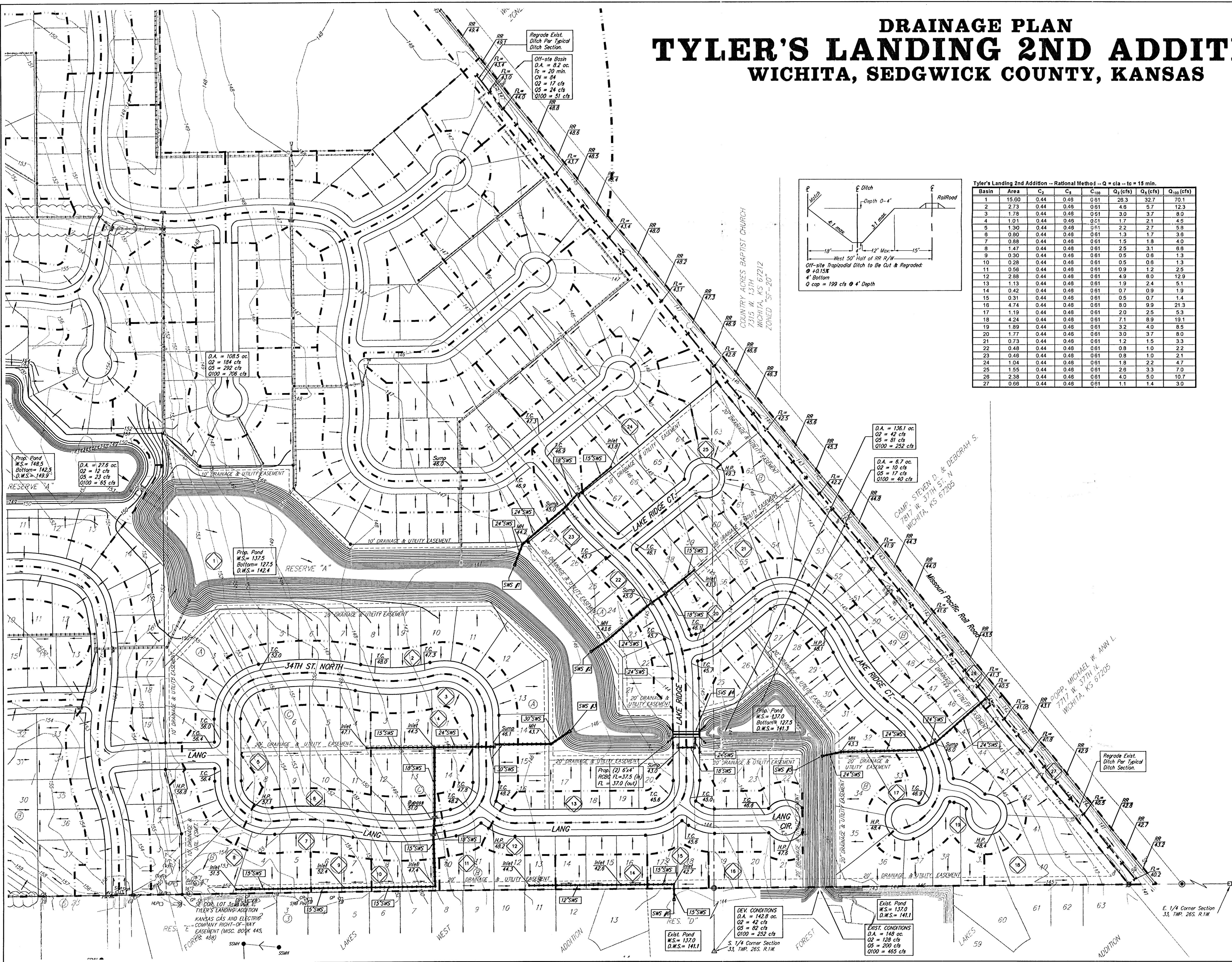


DRAINAGE PLAN

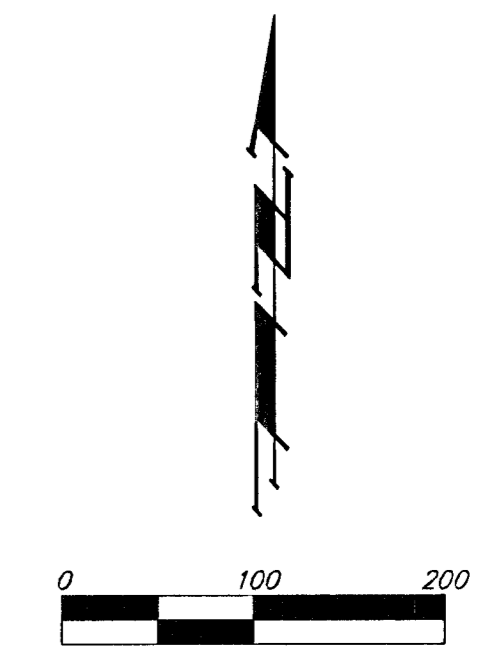
TYLER'S LANDING 2ND ADDITION

WICHITA, SEDGWICK COUNTY, KANSAS



Tyler's Landing 2nd Addition -- Rational Method -- Q = c₁a -- t_c = 15 min.

Basin	Area	C ₁	C ₂	C ₁₀₀	Q ₁ (cfs)	Q ₂ (cfs)	Q ₁₀₀ (cfs)
1	15.60	0.44	0.48	0.81	26.3	32.7	70.1
2	2.73	0.44	0.48	0.81	4.8	5.7	12.3
3	1.78	0.44	0.48	0.81	3.0	3.7	8.0
4	1.01	0.44	0.48	0.81	1.7	2.1	4.5
5	1.30	0.44	0.48	0.81	2.2	2.7	5.8
6	0.80	0.44	0.48	0.81	1.3	1.7	3.8
7	0.88	0.44	0.48	0.81	1.5	1.8	4.0
8	1.47	0.44	0.48	0.81	2.5	3.1	6.8
9	0.30	0.44	0.48	0.81	0.5	0.6	1.3
10	0.28	0.44	0.48	0.81	0.5	0.6	1.3
11	0.56	0.44	0.48	0.81	0.9	1.2	2.5
12	2.88	0.44	0.48	0.81	4.9	6.0	12.9
13	1.13	0.44	0.48	0.81	1.9	2.4	5.1
14	0.42	0.44	0.48	0.81	0.7	0.9	1.9
15	0.31	0.44	0.48	0.81	0.5	0.7	1.4
16	4.74	0.44	0.48	0.81	8.0	9.9	21.3
17	1.19	0.44	0.48	0.81	2.0	2.5	5.3
18	4.24	0.44	0.48	0.81	7.1	8.9	19.1
19	1.89	0.44	0.48	0.81	3.2	4.0	8.5
20	1.77	0.44	0.48	0.81	3.0	3.7	8.0
21	0.73	0.44	0.48	0.81	1.2	1.5	3.3
22	0.48	0.44	0.48	0.81	0.8	1.0	2.2
23	0.48	0.44	0.48	0.81	0.8	1.0	2.1
24	1.04	0.44	0.48	0.81	1.8	2.2	4.7
25	1.55	0.44	0.48	0.81	2.6	3.3	7.0
26	2.38	0.44	0.48	0.81	4.0	5.0	10.7
27	0.68	0.44	0.48	0.81	1.1	1.4	3.0



BENCHMARK:
 CITY OF WICHITA BENCHMARK DISC -
 SE COR. OF THE INTERSECTION OF
 TYLER RD. & 23TH STREET NORTH,
 32.30' S. OF &
 30.00' E. OF &
 55.50' E. OF P.P.
 9.20' SE. OF P.P.
 43.20' SE. OF SEC. COR. IRON
 ELEV. = 1780.04 CITY DATUM
 1383.44 NGVD29

- ⊙ = #4 Baughman Rebar (Found)
 - = #4 Baughman Rebar (Set)
 - = 3/4" Iron Pipe (Found)
 - ⊠ = Rail Road Spike (Found)
 - △ = 1/2" Iron Pipe in Thimble (Found)
 - ⊖ = #4 P.E.C. Rebar (Found)
 - ⊙ = 3/4" P.E.C. Iron Pipe (Found)
 - ⊖ = #5 Rebar (Found)
 - ⊖ = #4 S.R.B. Rebar (Found)
 - ⊖ = 1/2" P.E.C. Iron Pipe (Found)
- OPD = Cable TV Pedestal
 - EBX = Electric Box
 - HYD = Fire Hydrant
 - GA = Guy Anchor
 - HL = High Line Pole
 - MB = Mail Box
 - PM = Pipeline Marker
 - PP = Power Pole
 - SP = Sign
 - SSM = Sanitary Sewer Manhole
 - SSMB = Southwestern Bell Pedestal
 - SSWS = Stormwater Sewer Manhole
 - T = Tree
 - TP = Telephone Pole
 - WV = Water Valve

MINIMUM BUILDING PAD ELEVATIONS FOR LOWEST OPENING TO THE STRUCTURES

LOT	BLOCK	CITY DATUM	NGVD29
2-27	A	143.5	1332.9
16-39	B	143.5	1330.9