

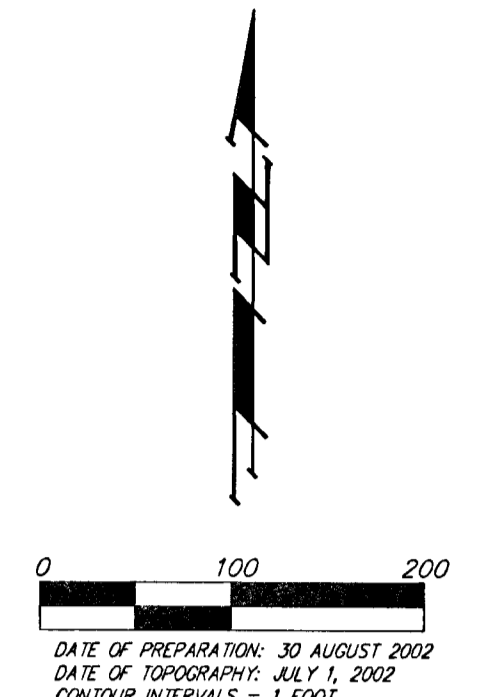
UTILITY CONCEPT

TYLER'S LANDING ADDITION

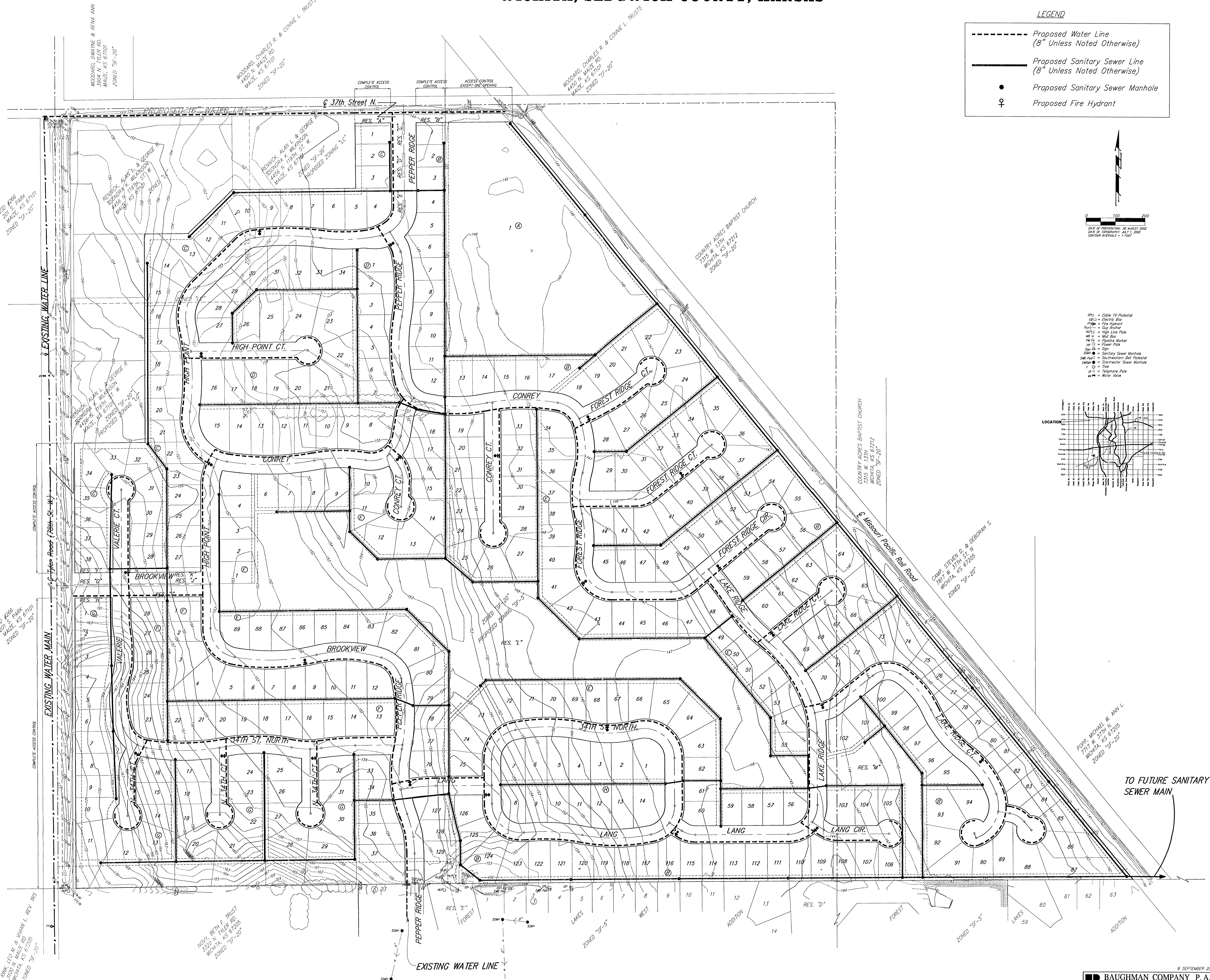
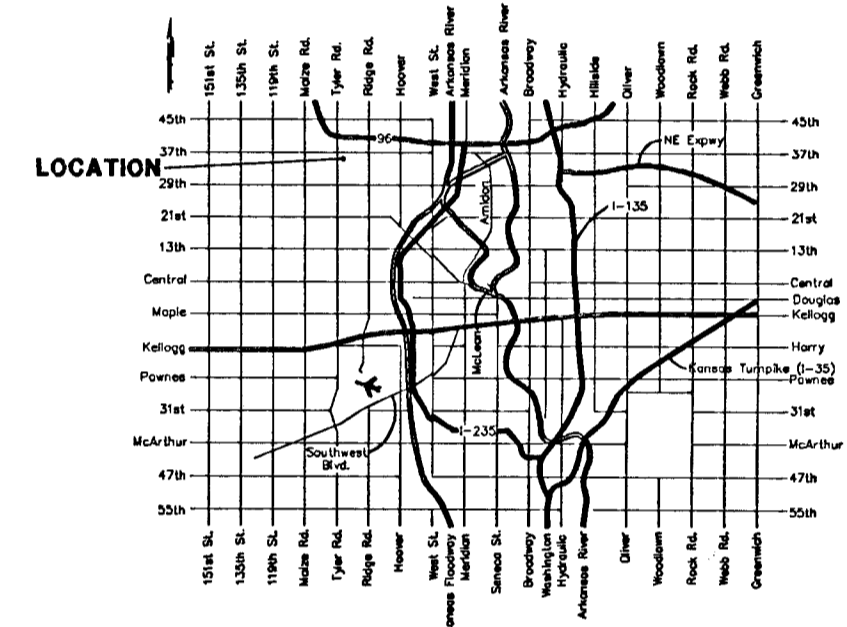
WICHITA, SEDGWICK COUNTY, KANSAS

LEGEND

- Proposed Water Line
(8" Unless Noted Otherwise)
- Proposed Sanitary Sewer Line
(8" Unless Noted Otherwise)
- Proposed Sanitary Sewer Manhole
- ♀ Proposed Fire Hydrant



- Cable TV Pedestal
- Electric Box
- Fire Hydrant
- Guy Anchor
- High Line Pole
- Mail Box
- Pipeline Marker
- Power Pole
- Sign
- Sanitary Sewer Manhole
- Southwestern Bell Pedestal
- Stormwater Sewer Manhole
- Tree
- Telephone Pole
- Water Valve



TO FUTURE SANITARY SEWER MAIN