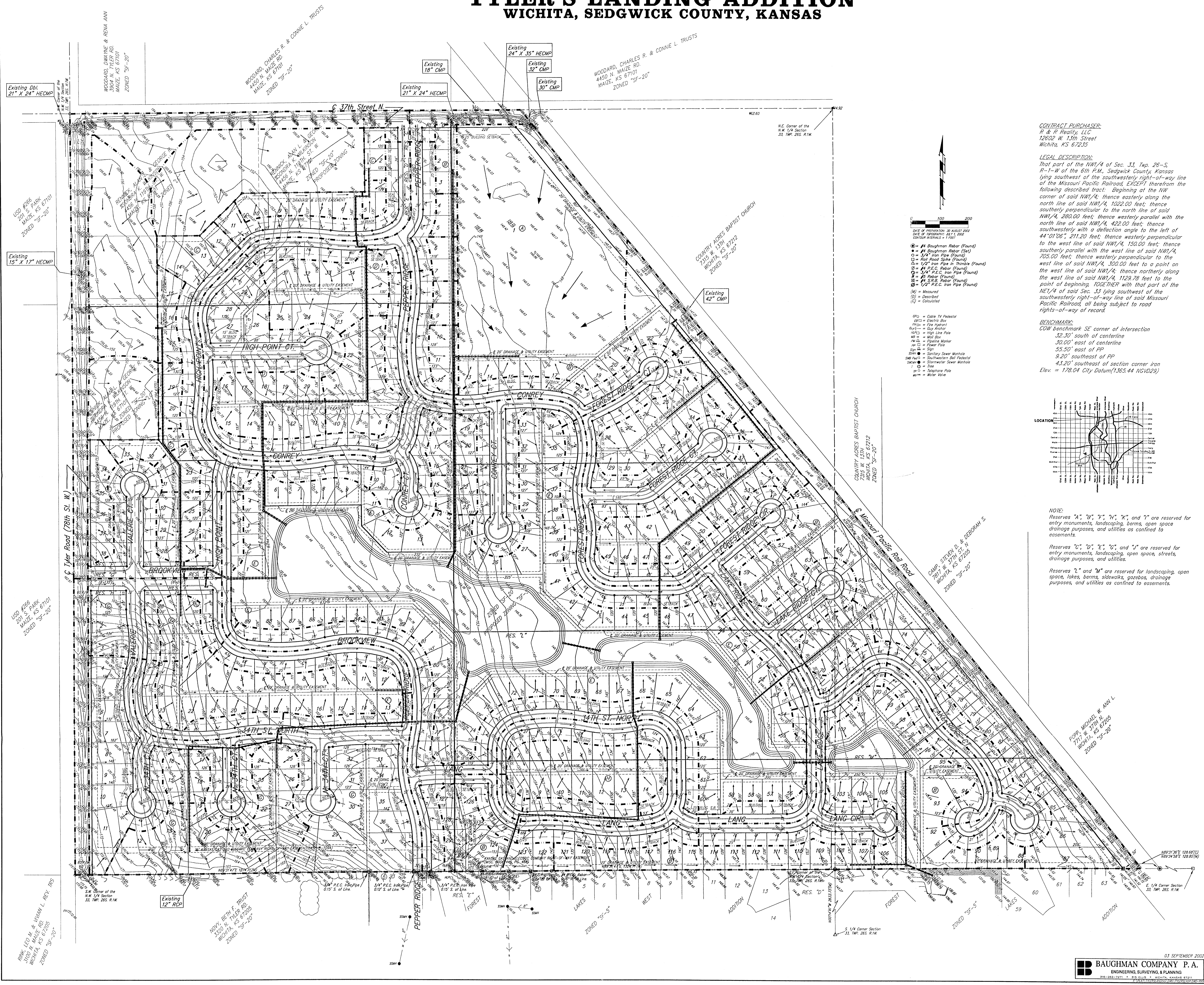


# DRAINAGE CONCEPT TYLER'S LANDING ADDITION WICHITA, SEDGWICK COUNTY, KANSAS

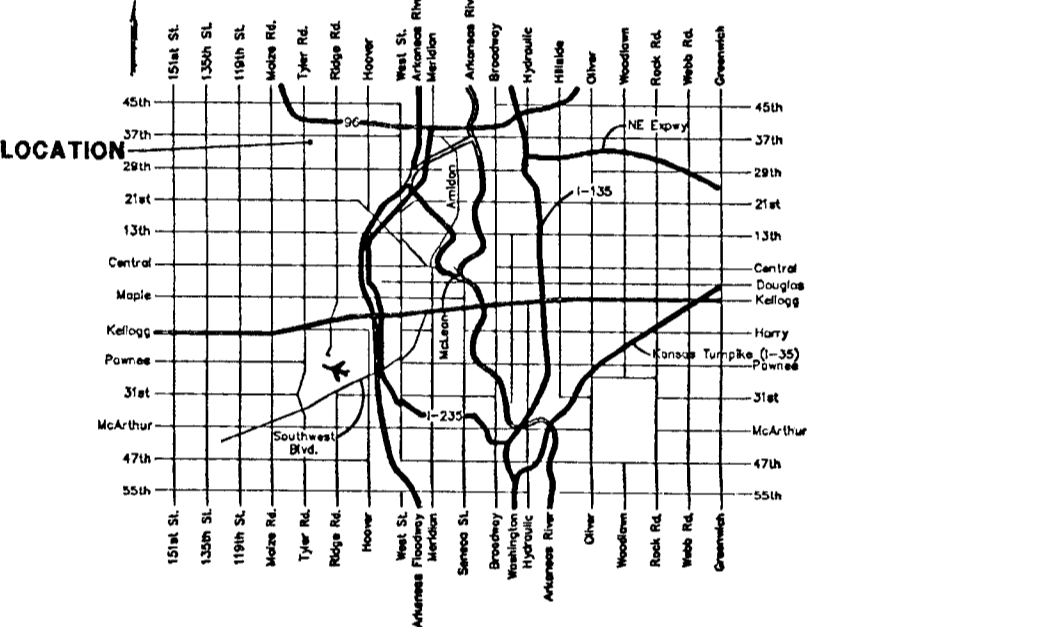


**CONTRACT PURCHASER:**  
R & P Realty, LLC  
12602 W. 13th Street  
Wichita, KS 67235

**LEGAL DESCRIPTION:**  
That part of the NW 1/4 of Sec. 33, Twp. 26-S, R-1-W of the 6th P.M., Sedgwick County, Kansas lying southwest of the southwesterly right-of-way line of the Missouri Pacific Railroad, EXCEPT therefrom the following described tract: Beginning at the NW corner of said NW 1/4, 1022.00 feet; thence southerly perpendicular to the north line of said NW 1/4, 280.00 feet; thence westerly parallel with the north line of said NW 1/4, 422.00 feet; thence southwesterly with a deflection angle to the left of 44°01'06", 211.20 feet; thence westerly perpendicular to the west line of said NW 1/4, 150.00 feet; thence southerly parallel with the west line of said NW 1/4, 705.00 feet; thence westerly perpendicular to the west line of said NW 1/4, 300.00 feet to a point on the west line of said NW 1/4, thence northerly along the west line of said NW 1/4, 1129.78 feet to the point of beginning, TOGETHER with that part of the NE 1/4 of said Sec. 33 lying southwest of the southwesterly right-of-way line of said Missouri Pacific Railroad, all being subject to road rights-of-way of record.

**BENCHMARK:**  
COW benchmark SE corner of intersection  
32.30' south of centerline  
30.00' east of centerline  
55.50' east of PP  
9.20' southeast of section corner iron  
Elev. = 178.04 City Datum (1365.44 NGVD29)

- DATE OF PREPARATION: 30 AUGUST 2008  
DATE OF TYPING: 08.11.2008  
CONTOUR INTERVAL: 1.00'
- ⊙ = #4 Baughman Rebar (Found)
  - ⊙ = #4 Baughman Rebar (Set)
  - ⊙ = 1/4" Iron Pipe (Found)
  - ⊙ = 1/2" Iron Pipe in Thimble (Found)
  - ⊙ = #4 P.E.C. Rebar (Found)
  - ⊙ = 1/4" P.E.C. Iron Pipe (Found)
  - ⊙ = #5 Rebar (Found)
  - ⊙ = #4 S.P.E.C. Rebar (Found)
  - ⊙ = 1/2" P.E.C. Iron Pipe (Found)
- (M) = Measured  
(D) = Described  
(C) = Calculated
- GP = Cable TV Pedestal
  - EB = Electric Box
  - FP = Fire Hydrant
  - GA = Gas Anchor
  - HL = High Line Pole
  - MB = Mail Box
  - FM = Filling Marker
  - PP = Power Pole
  - SP = Sign
  - SM = Sanitary Sewer Manhole
  - SWP = SWP Manhole
  - SWP = Stormwater Sewer Manhole
  - T = Tree
  - TP = Telephone Pole
  - W = Water Valve



**NOTE:**  
Reserves "A", "B", "F", "H", "K", and "L" are reserved for entry monuments, landscaping, berms, open space drainage purposes, and utilities as confined to easements.  
Reserves "C", "D", "E", "G", and "J" are reserved for entry monuments, landscaping, open space, streets, drainage purposes, and utilities.  
Reserves "I" and "M" are reserved for landscaping, open space, lakes, berms, sidewalks, gazebos, drainage purposes, and utilities as confined to easements.