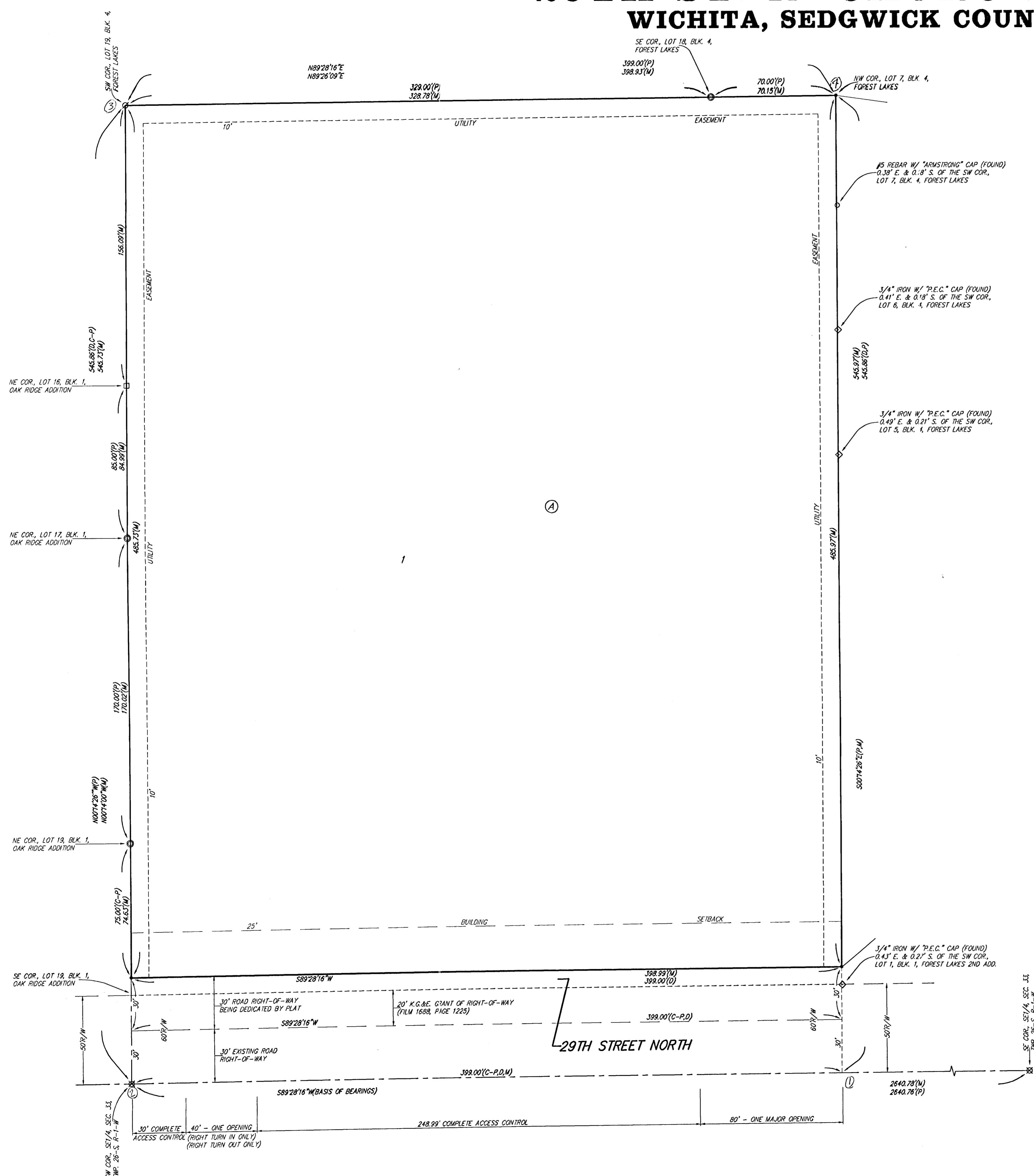


29TH ST. N. CHURCH ADDITION

WICHITA, SEDGWICK COUNTY, KANSAS



State of Kansas) SS We, *Baughman Company, P.A.*, Surveyors in
Sedgwick County) aforesaid county and state do hereby certify that we have surveyed and
platted "29TH ST. N. CHURCH ADDITION", Wichita, Sedgwick County, Kansas
and that the accompanying plat is a true and correct exhibit of the property
surveyed, described as the south 545.86 feet of the west 399 feet of the
SE 1/4 of Sec. 33, Twp. 26-S, R-1-W of the 6th P.M., Sedgwick County,
Kansas, except any portion thereof used for highway or road.
Existing public easements and dedications
being vacated by virtue of K.S.A. 12-512(b).
Baughman Company, P.A.

_____, Surveyor
Michael G. Conrey

Know all men by these presents that we,
the undersigned, have caused the land in the surveyors certificate to be
platted into a Lot, a Block, and a Street, to be known as "29TH ST. N.
CHURCH ADDITION", Wichita, Sedgwick County, Kansas. The utility
easements are hereby granted as indicated for the construction and
maintenance of all public utilities. The street is hereby dedicated to and
for the use of the public. Access controls shall be as depicted on the
face of the plat and are hereby granted to the City of Wichita, Kansas.

CORPORATION OF THE PRESIDING BISHOP OF THE
CHURCH OF JESUS CHRIST OF LATTER-DAY SAINTS,
a Utah corporation sole, successor by merger of
the Kansas Corporation of the Presiding Bishop
of the Church of Jesus Christ of Latter-day Saints,
a Utah corporation sole

State of Utah) SS On this _____ day of _____, 2004,
County of Salt Lake) personally appeared before me _____, personally
known to me to be the Authorized Agent of the CORPORATION OF THE
PRESIDING BISHOP OF THE CHURCH OF JESUS CHRIST OF LATTER-DAY
SAINTS, a Utah corporation sole, successor by merger of the Kansas
Corporation of the Presiding Bishop of the Church of Jesus of Latter-
day Saints, a Utah corporation sole, who acknowledged before me that
he signed the foregoing instrument as Authorized Agent for the
CORPORATION OF THE PRESIDING BISHOP OF THE CHURCH OF JESUS
CHRIST OF LATTER-DAY SAINTS, a Utah corporation sole, successor by
merger of the Kansas Corporation of the Presiding Bishop of the Church
of Jesus Christ of Latter-Day Saints, a Utah corporation sole, and that
the seal impressed on the within instrument is the seal of said Corporation;
and that said instrument is the free and voluntary act of said
Corporation, for the uses and purposes therein mentioned, and on oath
stated that he was authorized to execute said instrument on behalf
of said Corporation and that said Corporation executed the same.

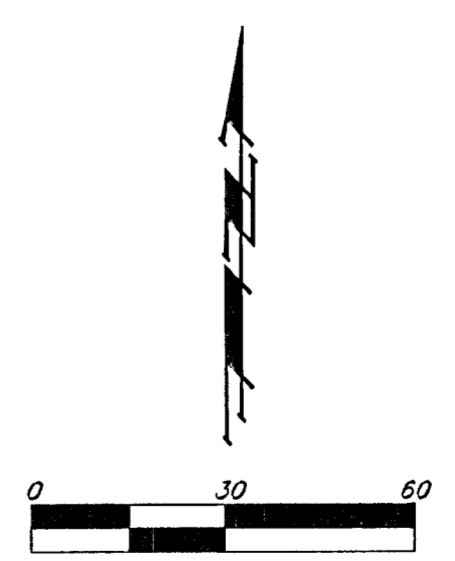
_____, Notary Public in and
for The State of Utah

My App'l. Exp. _____

- #4 REBAR W/ "BAUGHMAN" CAP (SET)
- #5 REBAR W/ "ARMSTRONG" CAP (FOUND)
- #4 REBAR W/ "S.R.B." CAP (FOUND)
- 1/2" IRON (FOUND)
- 1/2" IRON W/ "P.E.C." CAP (FOUND)
- 1/2" IRON IN THIMBLE (FOUND)
- ◇ 3/4" IRON W/ "P.E.C." CAP (FOUND)

- (M) = MEASURED
- (D) = DESCRIBED
- (P) = PLATTED
- (C-P) = CALCULATED PER PLATTED INFO.

NOTES:
A master grading plan for drainage has been developed for this subdivision
and is on file with the City of Wichita, Kansas. All drainage easements,
right-of-ways, or reserves shall remain at established grades or as
modified with the approval of the City Engineer of the City of Wichita,
Kansas. No obstructions which impede the flow of this drainage system be
allowed.



AREA BASED ON MEASURED BOUNDARY
TO SECTION LINE = 21772.992 SQ. FT.
(4.9994 ACRES)

AREA BASED ON MEASURED BOUNDARY TO
PREVIOUS 30' RIGHT-OF-WAY = 20580.049 SQ. FT.
(4.7252 ACRES)

NET AREA BASED ON MEASURED BOUNDARY:
LOT 1, BLOCK A = 19383.221 SQ. FT.
(4.4502 ACRES)

This plat of "29TH ST. N. CHURCH ADDITION",
Wichita, Sedgwick County, Kansas has been submitted to and approved by
the Wichita-Sedgwick County Metropolitan Area Planning Commission,
Wichita, Kansas.
Dated this _____ day of _____,
Wichita-Sedgwick County Metropolitan Area Planning Commission

_____, Chair
Bernard A. Hentzen

_____, Secretary
John L. Schlegel

This plat approved and all dedications
shown hereon accepted by the City Council of the City of Wichita,
Kansas, this _____ day of _____, 2004.

_____, Mayor
Carlos Mayans

_____, City Clerk
Karen Schofield

Reviewed in accordance with K.S.A. 58-2005
on this _____ day of _____, 2004.

_____, Authorized Agent

_____, Deputy County Surveyor
Tricia L. Robello, L.S. #1246
Sedgwick County, Kansas

Entered on transfer record this _____ day
of _____, 2004.

_____, County Clerk
Don Brace

State of Kansas) SS This is to certify that this plat has been
Sedgwick County) filed for record in the office of the Register of Deeds, this _____ day
of _____, 2004 at _____ o'clock _____ M.; and is duly recorded.

_____, Register of Deeds
Bill Meek

_____, Deputy
Linda Kizzire

BAUGHMAN COMPANY P.A.
ENGINEERING, SURVEYING, & PLANNING
316-262-7271 • 315 ELLIS • WICHITA, KANSAS 67211
F:\PLAT\29TH ST N CHURCH\DWG\29THSTN.DWG-MSC