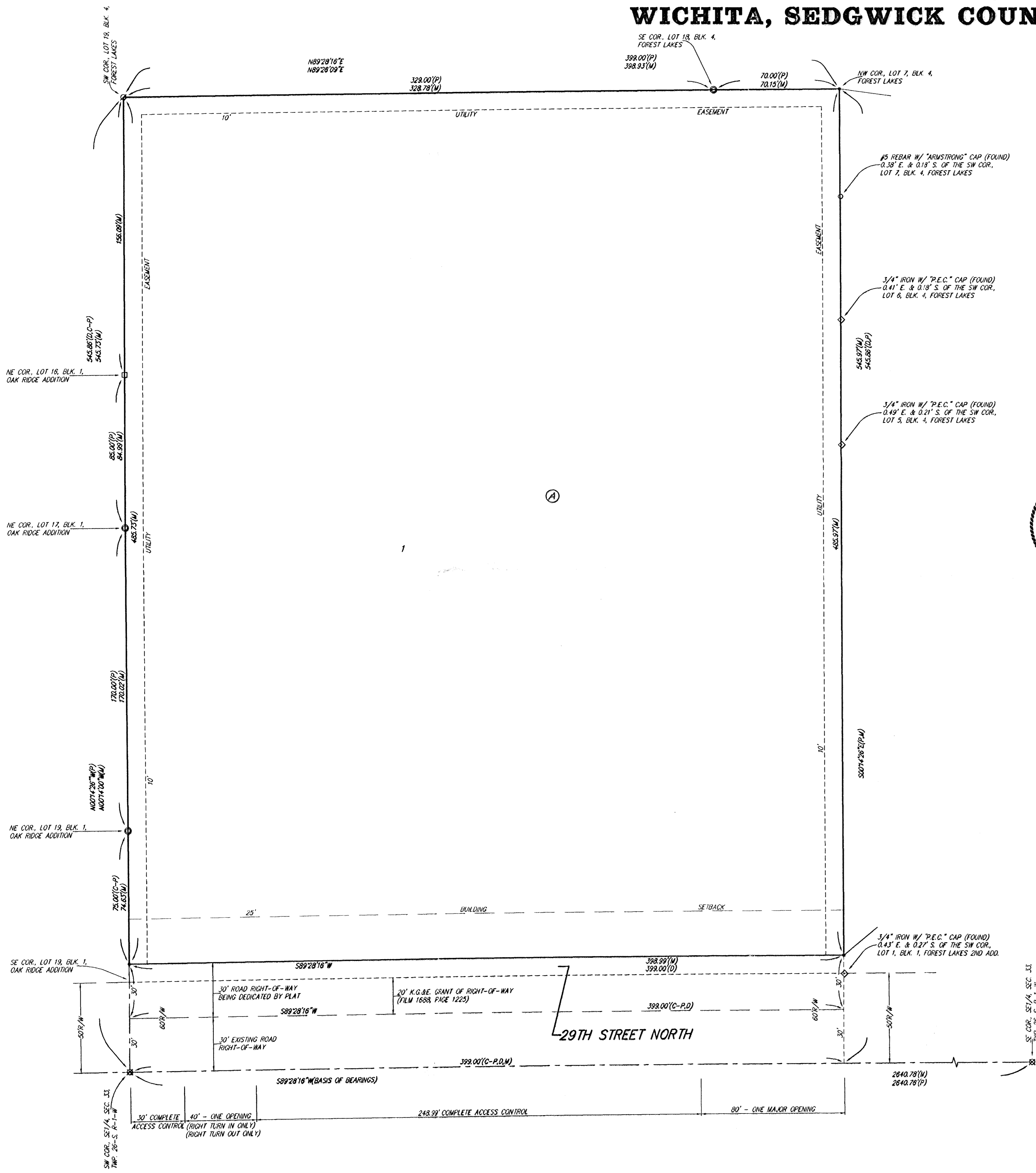


# 29TH ST. N. CHURCH ADDITION

## WICHITA, SEDGWICK COUNTY, KANSAS



State of Kansas) SS We, Baughman Company, P.A., Surveyors in aforesaid county and state do hereby certify that we have surveyed and platted "29TH ST. N. CHURCH ADDITION", Wichita, Sedgwick County, Kansas and that the accompanying plat is a true and correct exhibit of the property surveyed, described as the south 545.86 feet of the west 399 feet of the SE 1/4 of Sec. 33, Twp. 26-S, R-1-W of the 6th P.M., Sedgwick County, Kansas, except any portion thereof used for highway or road.

Existing public easements and dedications being vacated by virtue of K.S.A. 12-512(b).

Baughman Company, P.A.

Michael A. Conrey, Surveyor

Know all men by these presents that we, the undersigned, have caused the land in the surveyors certificate to be platted into a Lot, a Block, and a Street, to be known as "29TH ST. N. CHURCH ADDITION", Wichita, Sedgwick County, Kansas. The utility easements are hereby granted as indicated for the construction and maintenance of all public utilities. The street is hereby dedicated to and for the use of the public. Access controls shall be as depicted on the face of the plat and are hereby granted to the City of Wichita, Kansas.



CORPORATION OF THE PRESIDING BISHOP OF THE CHURCH OF JESUS CHRIST OF LATTER-DAY SAINTS, a Utah corporation sole, successor by merger of the Kansas Corporation of the Presiding Bishop of the Church of Jesus Christ of Latter-day Saints, a Utah corporation sole

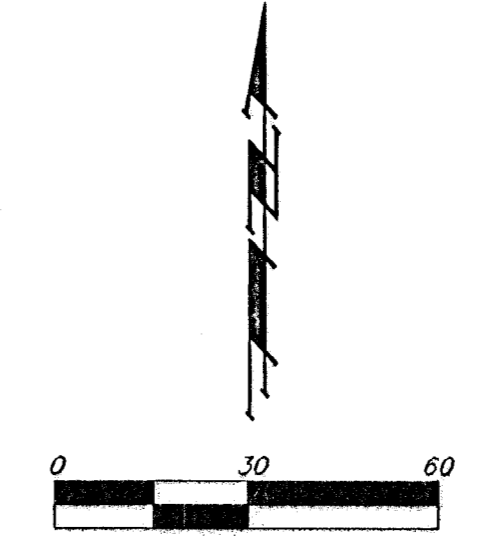
Terry F. Rudd, Authorized Agent

State of Utah) SS On this 19<sup>th</sup> day of October, 2004, personally appeared before me TERRY F. RUDD, personally known to me to be the Authorized Agent of the CORPORATION OF THE PRESIDING BISHOP OF THE CHURCH OF JESUS CHRIST OF LATTER-DAY SAINTS, a Utah corporation sole, successor by merger of the Kansas Corporation of the Presiding Bishop of the Church of Jesus of Latter-day Saints, a Utah corporation sole, who acknowledged before me that he signed the foregoing instrument as Authorized Agent for the CORPORATION OF THE PRESIDING BISHOP OF THE CHURCH OF JESUS CHRIST OF LATTER-DAY SAINTS, a Utah corporation sole, successor by merger of the Kansas Corporation of the Presiding Bishop of the Church of Jesus Christ of Latter-day Saints, a Utah corporation sole, and that the seal impressed on the within instrument is the seal of said Corporation; and that said instrument is the free and voluntary act of said Corporation, for the uses and purposes therein mentioned, and on oath stated that he was authorized to execute said instrument on behalf of said Corporation and that said Corporation executed the same.

D. Todd Evans, Notary Public in and for the State of Utah

My App'l. Exp. 09-08-08

- = #4 REBAR W/ "BAUGHMAN" CAP (SET)
  - = #5 REBAR W/ "ARMSTRONG" CAP (FOUND)
  - = #4 REBAR W/ "S.R.B." CAP (FOUND)
  - ⊗ = 1/2" IRON (FOUND)
  - ⊙ = 1/2" IRON W/ "P.E.C." CAP (FOUND)
  - ⊕ = 1/2" IRON IN THIMBLE (FOUND)
  - ◇ = 3/4" IRON W/ "P.E.C." CAP (FOUND)
- (M) = MEASURED  
 (D) = DESCRIBED  
 (P) = PLATTED  
 (C-P) = CALCULATED PER PLATTED INFO.



NOTE:  
 A master grading plan for drainage has been developed for this subdivision and is on file with the City of Wichita, Kansas. All drainage easements, right-of-ways, or reserves shall remain at established grades or as modified with the approval of the City Engineer of the City of Wichita, Kansas. No obstructions which impede the flow of this drainage system be allowed.

AREA BASED ON MEASURED BOUNDARY TO SECTION LINE = 21772.992 SQ. FT. (4.9934 ACRES)  
 AREA BASED ON MEASURED BOUNDARY TO PREVIOUS 30' RIGHT-OF-WAY = 20580.049 SQ. FT. (4.7254 ACRES)  
 NET AREA BASED ON MEASURED BOUNDARY: LOT 1, BLOCK A = 13,933.221 SQ. FT. (4.4504 ACRES)

This plat of "29TH ST. N. CHURCH ADDITION", Wichita, Sedgwick County, Kansas has been submitted to and approved by the Wichita-Sedgwick County Metropolitan Area Planning Commission, Wichita, Kansas.

Dated this \_\_\_\_\_ day of \_\_\_\_\_, 2004.

Wichita-Sedgwick County Metropolitan Area Planning Commission

\_\_\_\_\_, Chair  
 Bernard A. Hentzen  
 \_\_\_\_\_, Secretary  
 John L. Schlegel

This plat approved and all dedications shown hereon accepted by the City Council of the City of Wichita, Kansas, this \_\_\_\_\_ day of \_\_\_\_\_, 2004.

\_\_\_\_\_, Mayor  
 Carlos Mayans  
 \_\_\_\_\_, City Clerk  
 Karen Schotfield

Reviewed in accordance with K.S.A. 58-2005 on this \_\_\_\_\_ day of \_\_\_\_\_, 2004.

Tricia L. Robello, L.S. #1246  
 Deputy County Surveyor  
 Sedgwick County, Kansas

Entered on transfer record this \_\_\_\_\_ day of \_\_\_\_\_, 2004.

\_\_\_\_\_, County Clerk  
 Don Brace

State of Kansas) SS This is to certify that this plat has been filed for record in the office of the Register of Deeds, this \_\_\_\_\_ day of \_\_\_\_\_, 2004 at \_\_\_\_\_ o'clock \_\_\_\_\_ M., and is duly recorded.

\_\_\_\_\_, Register of Deeds  
 Bill Meek  
 \_\_\_\_\_, Deputy  
 Linda Kizzire

**BAUGHMAN COMPANY P. A.**  
 ENGINEERING, SURVEYING, & PLANNING  
 316-282-7271 • 315-1111 • WICHITA, KANSAS 67211  
 P:\PLAT\29TH ST N CHURCH ADDITION.DWG-MCE