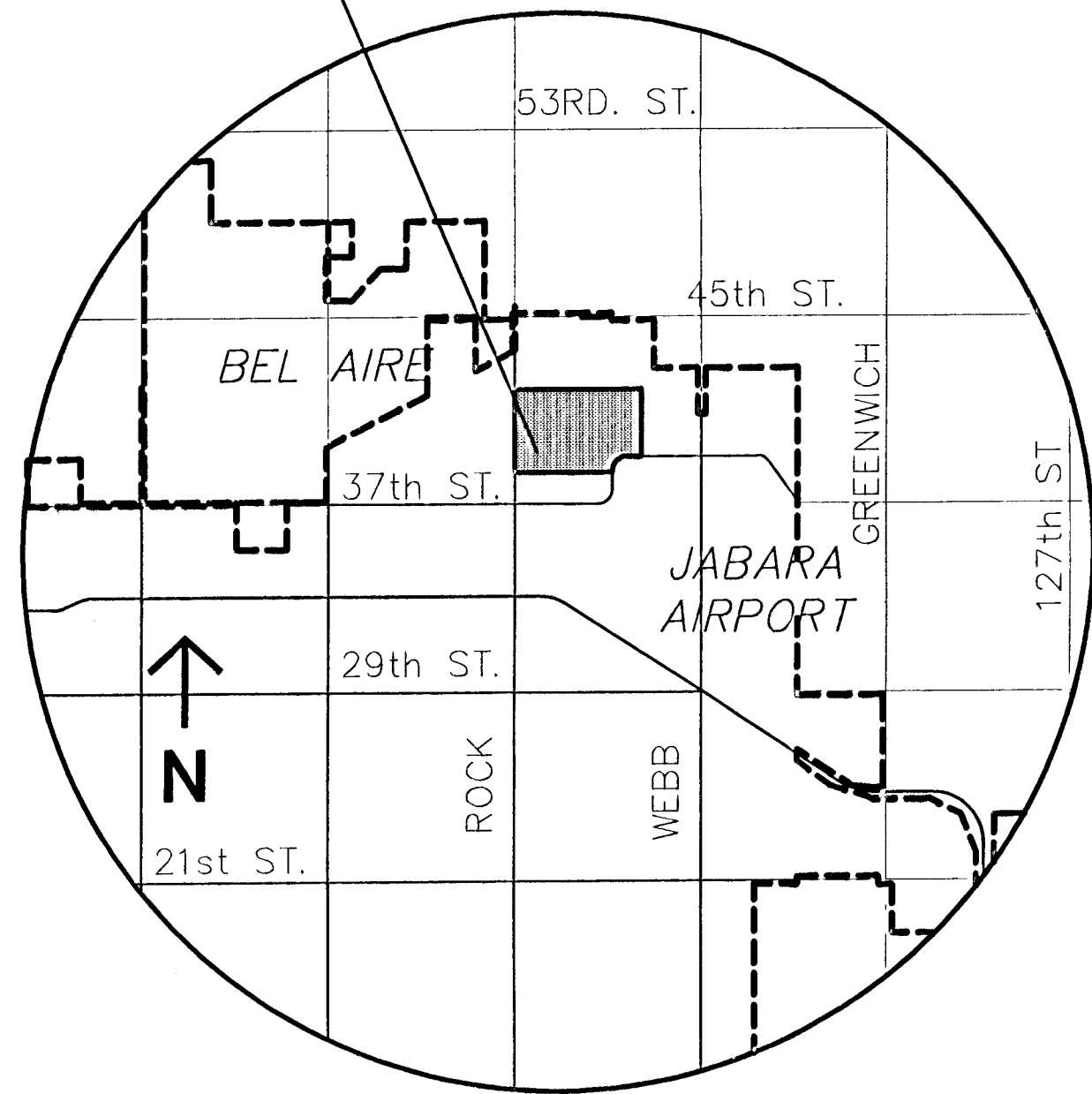


PROJECT LOCATION



VICINITY MAP

BENCHMARK

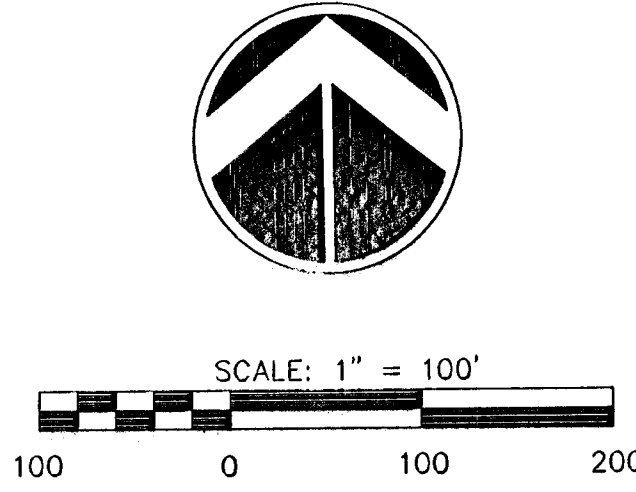
BM #1 " " CUT ON CENTER OF WEST SIDE OF MIDDLE INLET OF THREE AT THE N.W. CORNER LOT 12, BLOCK 1. ELEV. = 224.96

NOTES

- 1. ZONING: EXISTING=SF-20 PROP.=TF-3
- 2. LOT MINIMUM PADS AS INDICATED ON DRAINAGE PLAN, PROVIDED AT THE TIME OF PLATTING.

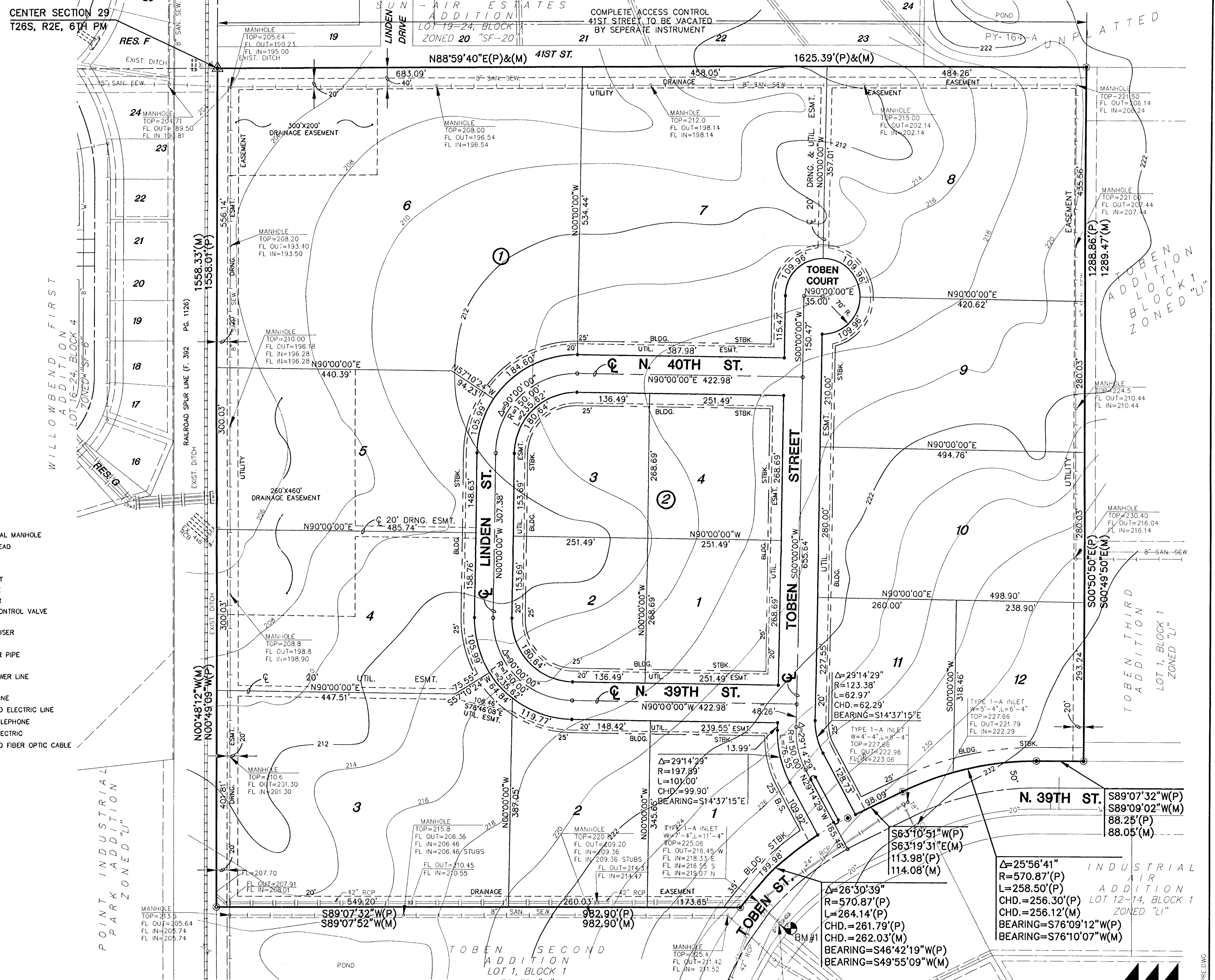
RESERVE "A"

ENTRY MONUMENTS, LANDSCAPING, OPEN SPACE.



LEGEND

- Gas meter, Yard light, Electric manhole, Signal light, Coniferous tree, Deciduous tree, Sign, Iron bar, Bush, Power pole, Electric box, Sewer cleanout, Edge of trees, Fence, Benchmark, Storm water manhole, Sanitary sewer manhole, Telephone manhole, Section corner, 5/8" rebar, Found rebar, Pole, Gate, Traffic signal manhole, Sprinkler head, Wall, Light pole, Fire hydrant, Water valve, Water meter, Irrigation control valve, Grate inlet, Telephone riser, Inlet, Storm sewer pipe, Water line, Sanitary sewer line, Gas line, Telephone line, Underground electric line, Overhead telephone, Overhead electric, Underground fiber optic cable.



PRELIMINARY PLAT TOBEN FIFTH ADDITION

DATE: DECEMBER 2000

OWNER/DEVELOPER: DAVID DUNN, 808 E. DOUGLAS, WICHITA, KANSAS, 67202



H:\CIVIL\00315\DWG\PROP\PRE\00315PRE.DWG Fr:1 Dec 22 08:37:10 2000

H:\CIVIL\00315\PROP\PRE\00315PRE.DWG