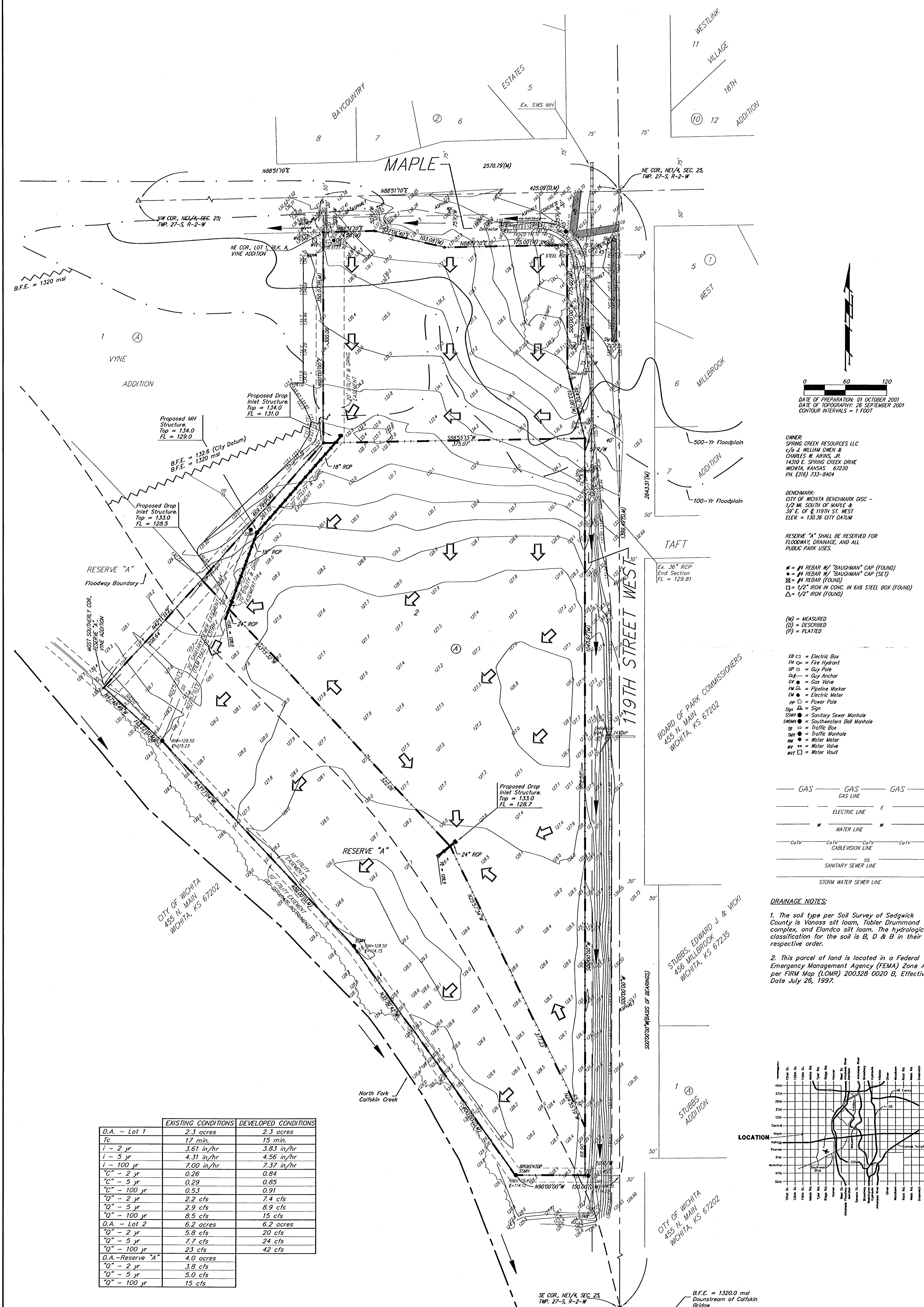


DRAINAGE CONCEPT THUNDERBIRD OFFICE PARK AN ADDITION TO WICHITA, SEDGWICK COUNTY, KANSAS



DATE OF PREPARATION: 01 OCTOBER 2001
DATE OF TOPOGRAPHY: 26 SEPTEMBER 2001
CONTOUR INTERVALS = 1 FOOT

OWNER:
SPRING CREEK RESOURCES LLC
C/O J. WILLIAM OWEN &
CHARLES W. AKINS, JR.
1430 E. SPRING CREEK DRIVE
WICHITA, KANSAS 67230
PH (316) 733-8404

BENCHMARK:
CITY OF WICHITA BENCHMARK DISC -
1/2" M. SOUTH OF MAPLE &
35' E. OF E. 119TH ST. WEST
ELEV. = 130.35 CITY DATUM

RESERVE "A" SHALL BE RESERVED FOR
FLOODWAY, DRAINAGE, AND ALL
PUBLIC PARK USES.

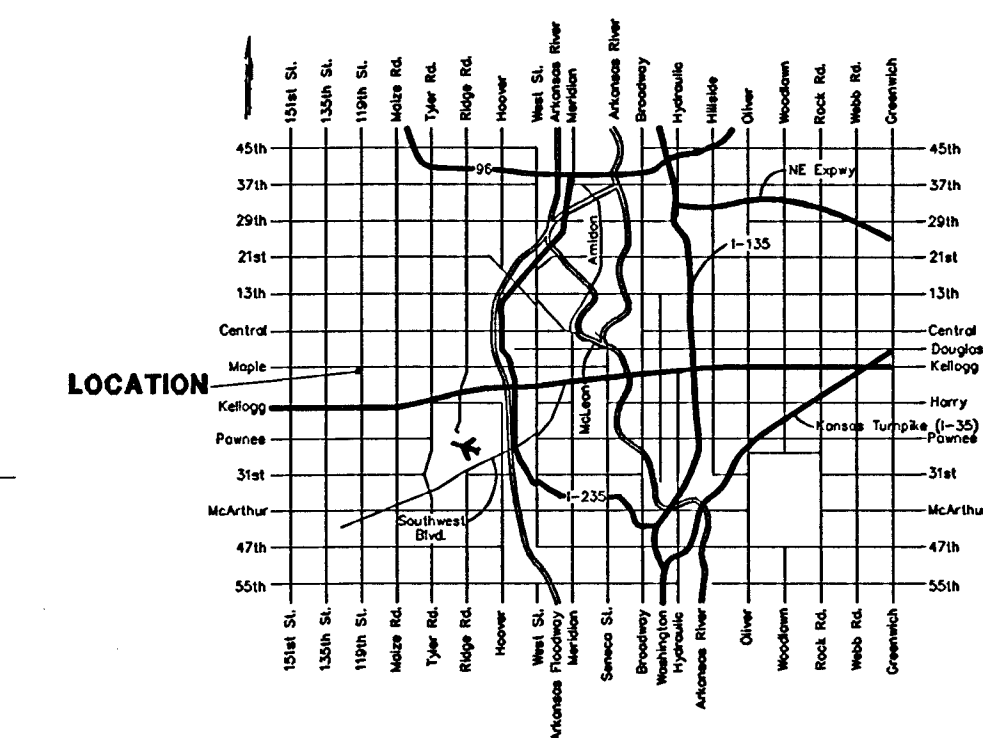
■ = #4 REBAR W/ "DAUGHMAN" CAP (FOUND)
● = #4 REBAR W/ "DAUGHMAN" CAP (SET)
■ = #4 REBAR (FOUND)
□ = 1/2" IRON IN CONC. IN 6x6 STEEL BOX (FOUND)
△ = 1/2" IRON (FOUND)

(M) = MEASURED
(D) = DESCRIBED
(P) = PLATED

EB □ = Electric Box
FH ○ = Fire Hydrant
OP ○ = Guy Pole
GA — = Guy Anchor
CV — = Gas Valve
PW Δ = Pipeline Marker
EM ● = Electric Meter
PP □ = Power Pole
Sgn Δ = Sign
SMB ● = Sanitary Sewer Manhole
SMBW ● = Southwestern Bell Manhole
TB □ = Traffic Box
TM ● = Traffic Manhole
MM ● = Meter Manhole
MW ● = Meter Valve
MWT □ = Meter Vault

— GAS — GAS — GAS —
GAS LINE
— ELECTRIC LINE — E —
— WATER LINE — W —
— CoTV — CoTV — CoTV —
CABLEVISION LINE
— SS —
SANITARY SEWER LINE
— STORM WATER SEWER LINE —

DRAINAGE NOTES:
1. The soil type per Soil Survey of Sedgwick County is Vianess silt loam, Tabler Drummond complex, and Elmda silt loam. The hydrologic classification for the soil is B, D & B in their respective order.
2. This parcel of land is located in a Federal Emergency Management Agency (FEMA) Zone A2 per FIRM Map (LOMR) 20032B 0020 B, Effective Date July 26, 1997.



	EXISTING CONDITIONS	DEVELOPED CONDITIONS
D.A. - Lot 1	2.3 acres	2.3 acres
T ₀	17 min.	15 min.
I - 2 yr	3.61 in/hr	3.83 in/hr
I - 5 yr	4.31 in/hr	4.56 in/hr
I - 100 yr	7.00 in/hr	7.37 in/hr
Q ₀ - 2 yr	0.26	0.84
Q ₀ - 5 yr	0.29	0.85
Q ₀ - 100 yr	0.53	0.91
Q ₀ - 2 yr	2.2 cfs	7.4 cfs
Q ₀ - 5 yr	2.9 cfs	8.9 cfs
Q ₀ - 100 yr	8.5 cfs	15 cfs
D.A. - Lot 2	6.2 acres	6.2 acres
Q ₀ - 2 yr	5.8 cfs	20 cfs
Q ₀ - 5 yr	7.7 cfs	24 cfs
Q ₀ - 100 yr	23 cfs	42 cfs
D.A. - Reserve "A"	4.0 acres	
Q ₀ - 2 yr	3.8 cfs	
Q ₀ - 5 yr	5.0 cfs	
Q ₀ - 100 yr	15 cfs	