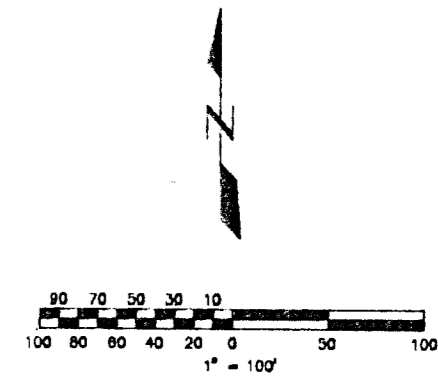
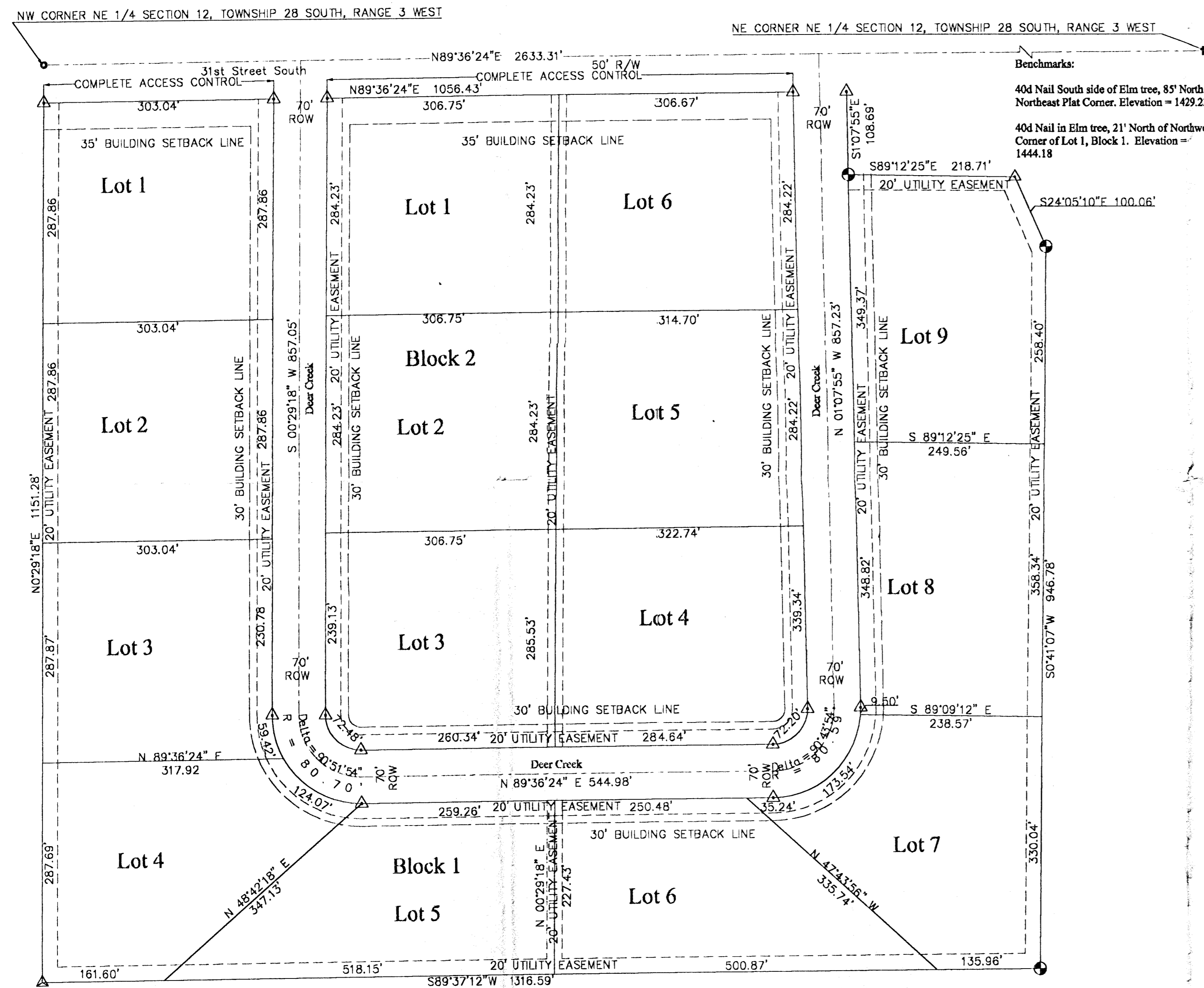


# TIMBER CREEK ADDITION TO SEDGWICK COUNTY, KANSAS



- △ = 1/2" # BAR L.S. #950 (SET)
- ⊙ = 1/2" # REBAR (FOUND)
- △ = 1/2" # PIPE (FOUND)
- = 1" # BAR (FOUND)
- = STONE (FOUND)

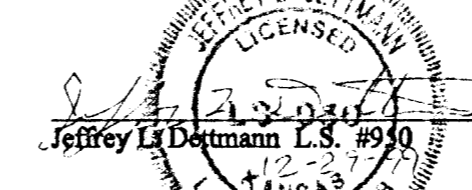


**Benchmarks:**  
 40d Nail South side of Elm tree, 85' North of Northeast Plat Corner. Elevation = 1429.23  
 40d Nail in Elm tree, 21' North of Northwest Corner of Lot 1, Block 1. Elevation = 1444.18

I, Jeffrey L. Dettmann, licensed and authorized to practice surveying in the State of Kansas, do hereby certify that I have been in responsible charge of surveying and platting "Timber Creek Addition" an addition to Sedgwick County, Kansas and that the accompanying plat is a true and correct exhibit of said survey described as follows:

A tract of land lying in the Northeast Quarter of Section 12, Township 28 South, Range 3 West of the Sixth Principal Meridian, Sedgwick County, Kansas, described as: Commencing at the Northwest corner of said Northeast Quarter; thence on an assumed bearing of S00°29'18"W along the West line of said Northeast Quarter for 50.0 feet to the point of beginning; thence N89°36'24"E parallel to the North line of said Northeast Quarter for 1056.43 feet; thence S01°07'55"E for 108.69 feet; thence S89°12'25"E for 218.71 feet; thence S24°05'10"E for 100.06 feet; thence S00°41'07"W for 946.78 feet; thence S89°37'12"W for 1316.59 feet to a point on the West line of said Quarter; thence N00°29'18"E along the West line of said Northeast Quarter for 1151.28 feet to the point of beginning.

I hereby certify that the details of this plat are correct to the best of my knowledge and belief this 27<sup>th</sup> day of December, 1999



Know all men by these presents that we the undersigned owners of the land as above set forth in the Surveyor's Certificate, have caused the same to be surveyed and platted into lots and blocks. The same to be known as Timber Creek Addition to Sedgwick County, Kansas. All streets are hereby dedicated to and for the use of the public. All utility easements as shown hereon are hereby granted for the construction and maintenance of all public utilities. A drainage plan has been developed for the plat and all rights-of-way, shall remain at established grades or as modified with the approval of the applicable City or County Engineer, and unobstructed to allow for the conveyance of stormwater. All abutters rights of access to or from 31st Street South over and across the North line of Lot 1 Block 1 and Lots 1 and 6 Block 2 of Timber Creek Addition, are hereby granted to Sedgwick County, Kansas.

*Duane Reynolds*  
 Duane Reynolds, Owner  
*Michele Reynolds*  
 Michele Reynolds, Owner

State of Kansas )  
 County of Sedgwick )  
 This instrument was acknowledged before me on the 30 day of December, 1999 by Duane Reynolds and Michele Reynolds

*David Trout*  
 David Trout, Notary Public  
 My commission expires: November 5, 2001

We the undersigned holders of a mortgage on the above described property, do hereby consent to this plat of "Timber Creek Addition", Sedgwick County, Kansas.  
*Greg Lesh*  
 Greg Lesh, Community Bank President, Intrust Bank, N.A.

State of Kansas )  
 County of Sedgwick )  
 This instrument was acknowledged before me on the 23 day of December, 1999 by Greg Lesh, Community Bank President, of Intrust Bank, N.A.

*David Trout*  
 David Trout, Notary Public  
 My commission expires: November 5, 2001

This plat of "Timber Creek Addition" has been submitted to and approved by the Wichita-Sedgwick County Metropolitan Area Planning Commission, Wichita, Kansas.  
 Dated this \_\_\_\_\_ day of \_\_\_\_\_, 2000.

WICHITA-SEDGWICK COUNTY METROPOLITAN PLANNING COMMISSION  
 \_\_\_\_\_, Chairman  
 Francis S. Garofalo  
 \_\_\_\_\_, Secretary  
 Marvin S. Krout

This plat approved and all dedications shown hereon, if any, accepted by the Board of County Commissioners of Sedgwick County, Kansas, this \_\_\_\_\_ day of \_\_\_\_\_, 2000.

Bill Hancock, Chairman  
 ATTEST:  
 \_\_\_\_\_, County Clerk  
 James Alford  
 Entered on transfer record this \_\_\_\_\_ day of \_\_\_\_\_, 2000.  
 \_\_\_\_\_, County Clerk  
 James Alford  
 Reviewed in accordance with K.S.A. 58-2005 on this \_\_\_\_\_ day of \_\_\_\_\_, 2000

Tricia L. Robello #1246  
 Deputy County Surveyor  
 Sedgwick County, Kansas

State of Kansas )  
 County of Sedgwick )  
 This is to certify that this instrument was filed for record in the Register of Deeds Office, at \_\_\_\_\_ a.m.-p.m., on the \_\_\_\_\_ day of \_\_\_\_\_, 2000.  
 \_\_\_\_\_, Register of Deeds  
 Bill Meeks  
 \_\_\_\_\_, Deputy  
 Linda Kizzire

