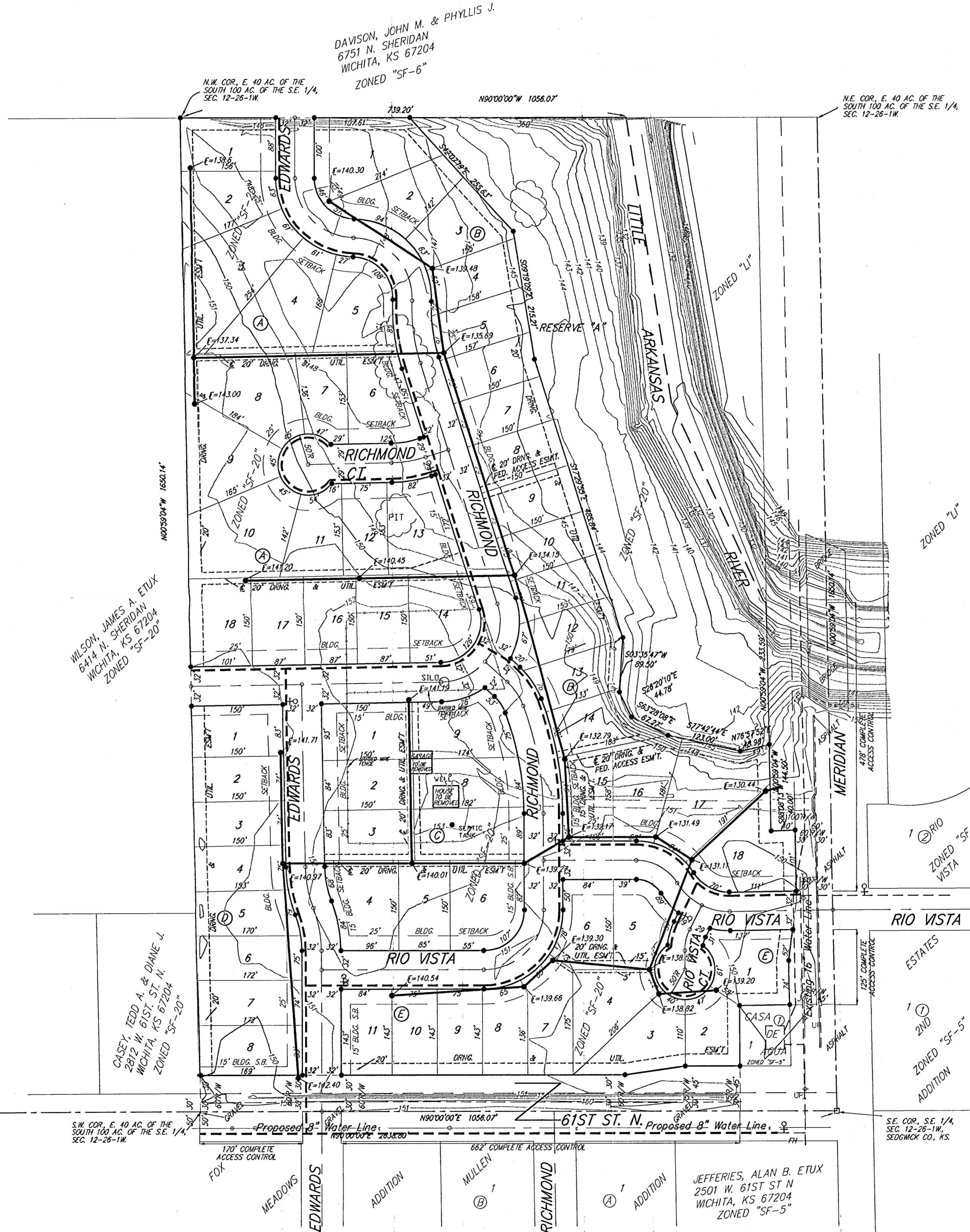
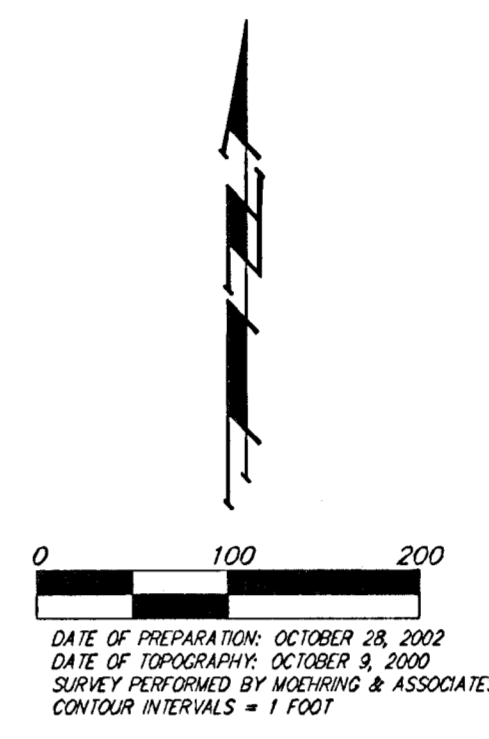


UTILITY PLAN RIO VISTA ESTATES 4TH WICHITA, SEDGWICK COUNTY, KANSAS



LEGEND

	Proposed Water Line (8" Unless Noted Otherwise)
	Proposed Sanitary Sewer Line (8" Unless Noted Otherwise)
	Proposed Sanitary Sewer Manhole
	Proposed Fire Hydrant
	Manhole Inflows Shown



OWNER & SUBDIVIDER:
James Catron
6545 Bella Rd.
Wichita, Ks 67204
316-755-2413

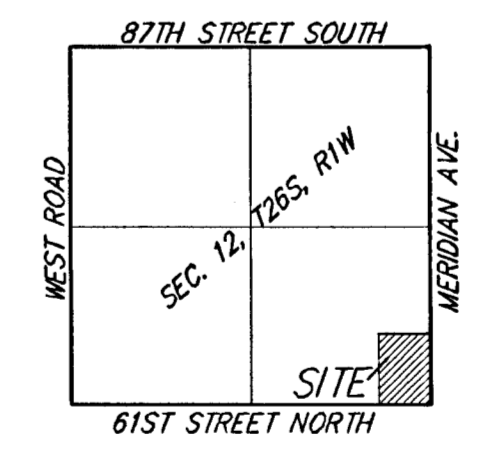
LEGAL DESCRIPTION:
All that part of the east 40.0 acres of the south 100 acres of the S.E. 1/4, of Section 12, Township 26 South, Range 1 West of the 6TH P.M., which lies westerly of the center of the Little Arkansas River, in Sedgwick County, Kansas, EXCEPT roads and that part platted as Casa De Aqua Addition.

BENCHMARK:
R.R. SPIKE IN H.L.P., 150' E. & 30' S. OF THE S.W. COR., S.E. 1/4, SEC. 12-26-1W.
ELEV. = 1338.96 M.S.L.
ELEV. = 151.56 City Datum

"O" IN OPEN, TOP FLANGE OF FIRE HYDRANT AT THE S.W. CORNER OF 61ST. ST. N. & MERIDIAN AVE.
ELEV. = 1339.16 M.S.L.
ELEV. = 151.76 City Datum

Reserve "A" is reserved for landscaping, open space, berms, gazebos, drainage purposes and utilities as confined to easements.

- UP = UTILITY POLE
- LP = LIGHT POLE
- OE = OVERHEAD ELECTRIC
- WM = WATER METER
- FH = FIRE HYDRANT
- W = WATER MAIN
- WV = WATER VALVE
- AR = AIR RELEASE
- CI = CURB INLET
- SWS = STORM WATER SEWER



- = REBAR W/ "BAUGHMAN" CAP (SET)
- = SECTION CORNER (FOUND)
- (M) = MEASURED
- (D) = DESCRIBED

MINIMUM BUILDING PAD ELEVATIONS FOR LOWEST OPENING TO THE STRUCTURES

LOT	BLOCK	ELEVATION	
		M.S.L.	CITY DATUM
1-18	B	1333.6	146.2

30 DECEMBER 2002