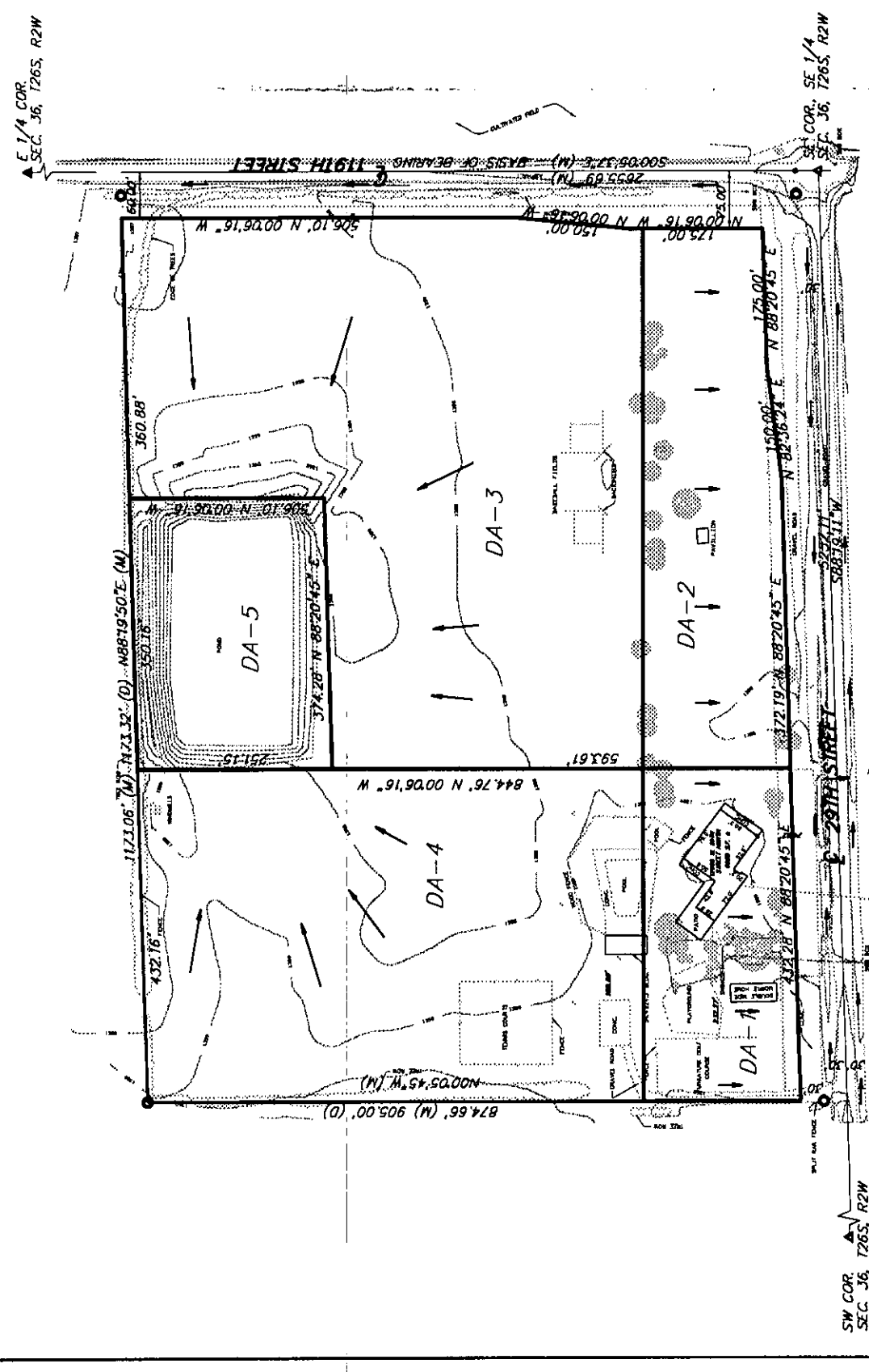
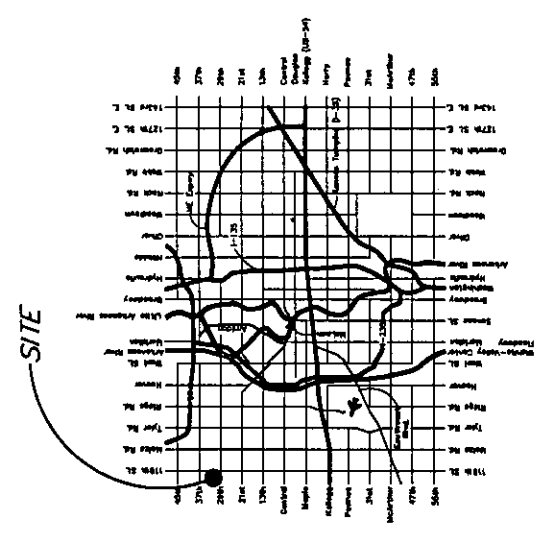


**AUSTIN ENGINEERING SERVICES**  
 244 S. Lamar, Suite 205, Austin, TX 78701  
 512.476.1100 Fax 512.476.1103

**UBIQUITY FIRST ADDITION**  
**AN ADDITION TO SEDGWICK COUNTY, KANSAS**



- LEGEND:**
- gas meter
  - ⊙ water meter
  - ⊙ power pole
  - down gully
  - ⊙ water valve
  - ⊙ traffic sign
  - ⊙ light pole
  - telephone pedestal
  - rebar (set 5/8" w/ AMPA cap)
  - 1/2" iron pipe (found)
  - 3/4" iron pipe (found)
  - ⊕ windmill
  - X- fence
  - ⊙ tree



**LOCATION MAP**

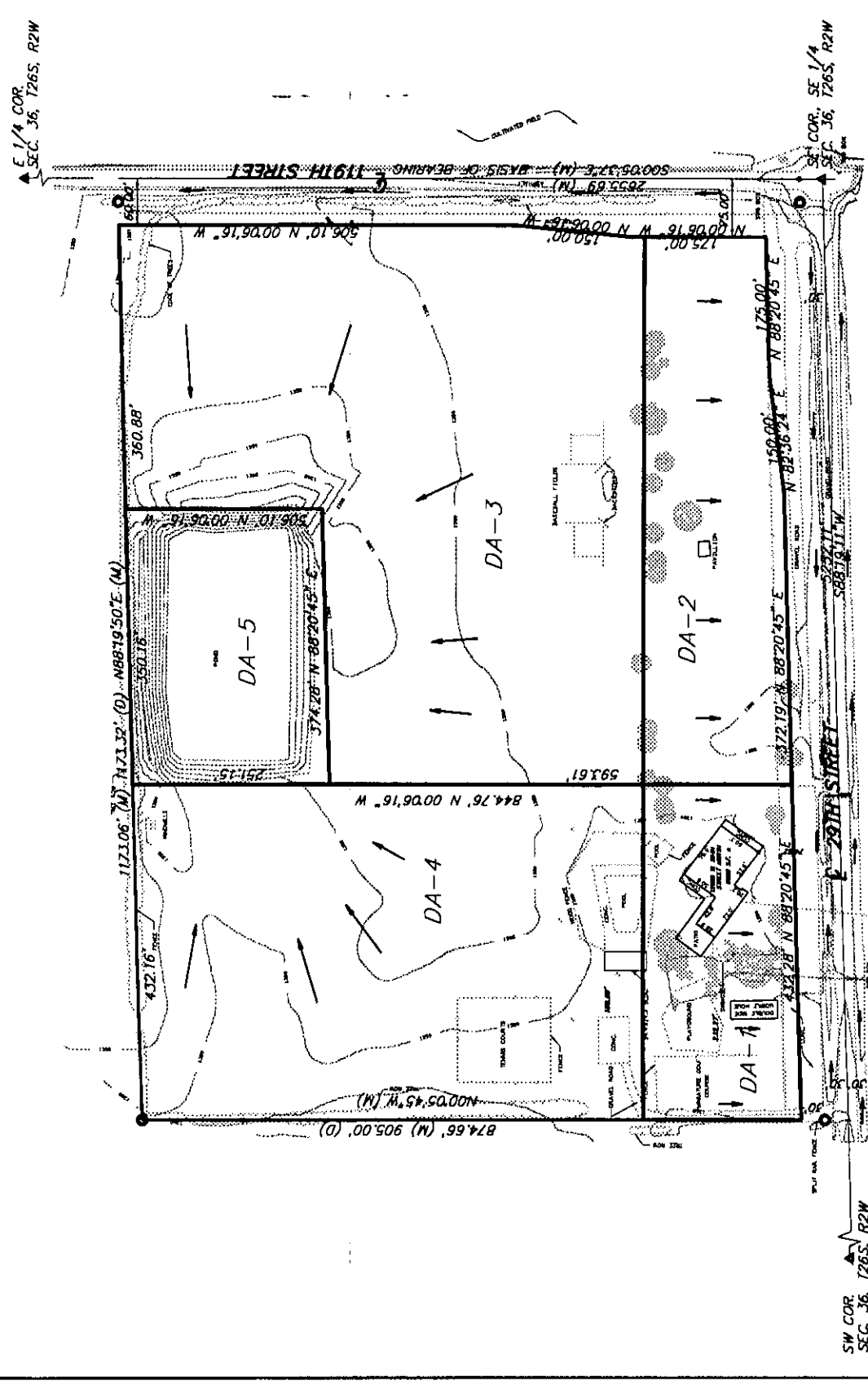
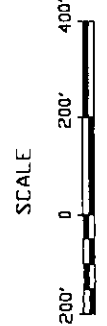
Area #	Area	s	l <sub>top</sub>	Undeveloped		Developed	
				Q <sub>3</sub>	Q <sub>100</sub>	Q <sub>3</sub>	Q <sub>100</sub>
1	1.95	4.56	7.37	5.3	8.6	7.6	12.2
2	2.81	4.56	7.37	7.7	12.4	10.9	17.6
3	8.79	4.56	7.37	24.0	38.9	34.1	55.1
4	6.42	4.56	7.37	17.6	28.4	24.9	40.2
5	2.01	4.56	7.37	5.5	8.9	7.8	12.6
TOTAL	22.0	4.56	7.37	60.1	97.2	85.2	137.7

**NOTES**

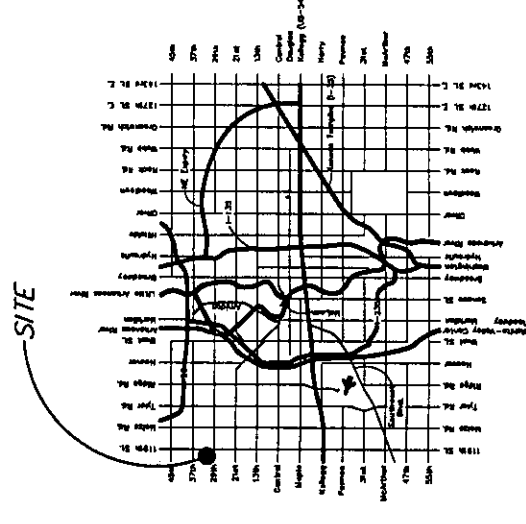
1. DA-1 & DA-2 are to drain exist. ditch in 29th St.
2. All other drainage should drain to exist. pond.

*Completed for pond, structure  
 for pond, structure  
 outfall*

**DRAINAGE PLAN**  
**UBIQUITY FIRST ADDITION**  
**AN ADDITION TO SEDGWICK COUNTY, KANSAS**



- LEGEND:**
- gas meter
  - ⊙ water meter
  - ⊠ power pole
  - down guy
  - ⊞ water valve
  - ⊠ traffic sign
  - ⊠ light pole
  - ⊠ telephone pedestal
  - rebar (see 5/8" w/ AMPA cap)
  - 1/2" iron pipe (found)
  - 3/4" iron pipe (found)
  - ⊠ windmill
  - X- fence
  - ⊙ tree



Area /	Area	s	l <sub>top</sub>	Undeveloped		Developed	
				Q <sub>3</sub>	Q <sub>100</sub>	Q <sub>3</sub>	Q <sub>100</sub>
1	1.95	4.56	7.37	5.3	8.6	7.6	12.2
2	2.81	4.56	7.37	7.7	12.4	10.9	17.6
3	8.79	4.56	7.37	24.0	38.9	34.1	55.1
4	6.42	4.56	7.37	17.6	28.4	24.9	40.2
5	2.01	4.56	7.37	5.5	8.9	7.8	12.6
TOTAL	22.0	4.56	7.37	60.1	97.2	85.2	137.7

**NOTES**

1. DA-1 & DA-2 are to drain exist. ditch in 29th St.
2. All other drainage should drain to exist. pond.

