

HARRY

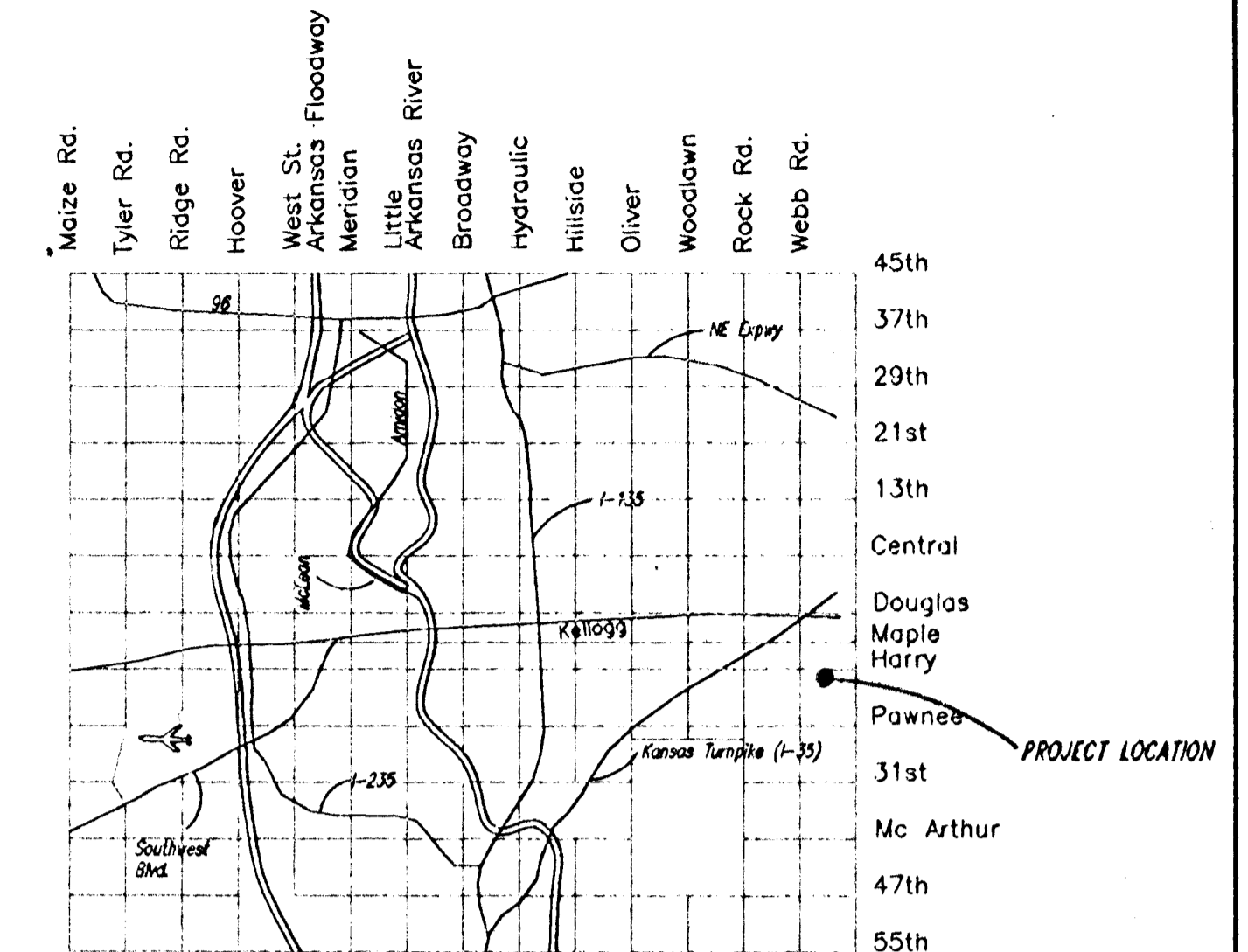
NE Cor. NE 1/4
Sec. 33-27R-2E



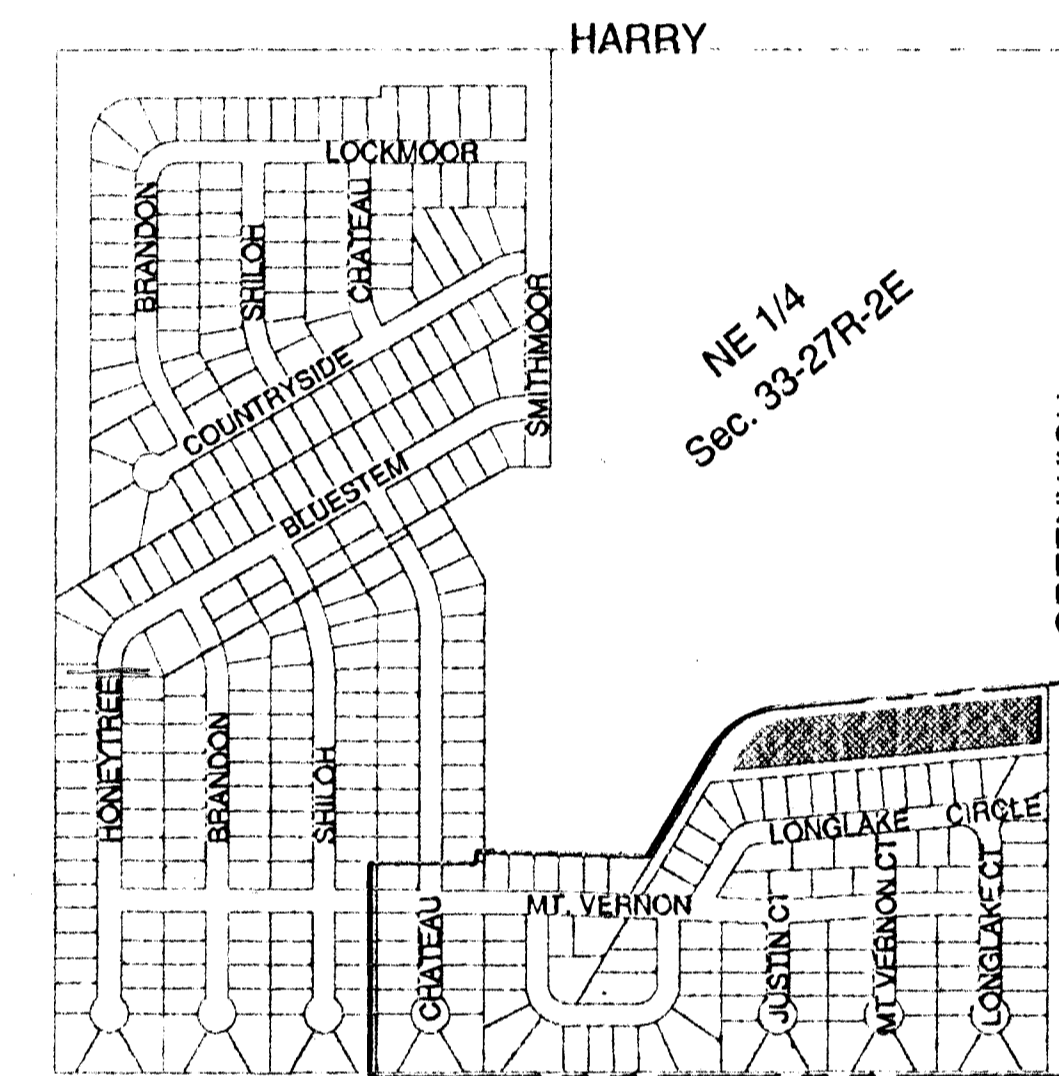
SCALE: 1" = 100'

LEGEND

- Direction of Flow
- Proposed San. Sewer
- Proposed Water Line
- ⋈ Proposed F.H.

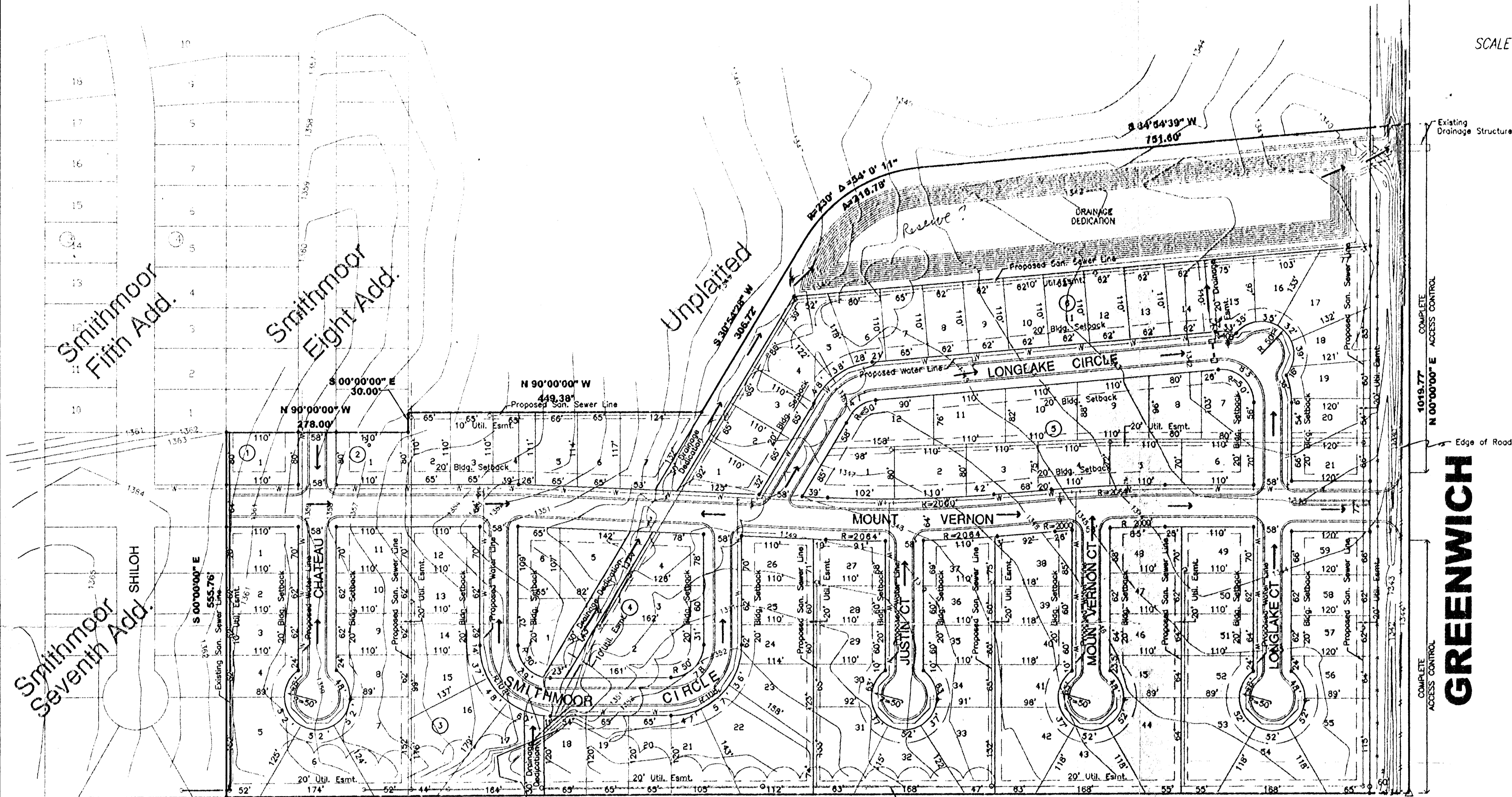


Location Map



Development Place

Proposed Smithmoor 9th Add.



PRELIMINARY PLAT

SMITHMOOR NINTH ADDITION TO WICHITA, SEDGWICK COUNTY, KANSAS

Benchmarks

1. Square cut on B/C - 5' N. of N. wing of driveway @ #1811 S. Chateau. Elev. = 1351.14
2. Square cut on B/C - 12' S. of S. wing of driveway @ #1910 S. Shiloh. Elev. = 1363.59

Legal Description

A tract of land located in the Northeast Quarter of Section 33, Township 27 South, Range 2 East of the 6th Principal Meridian, in Sedgwick County, Kansas, more particularly described as follows:

Beginning at the Southeast Corner of Smithmoor Seventh Addition to Wichita, Sedgwick County, Kansas; thence along the South line of Northeast Quarter of said Section 33, at an assumed bearing of N 89°47'08" E, a distance of 1810.51 feet to the Southeast Corner of the said Northeast Quarter; thence along the East line of said Northeast Quarter, at a bearing of N 00°00'00" E, a distance of 1019.77 feet; thence bearing S 84°54'39" W, a distance of 751.60 feet to P.C. of a curve; thence along a curve to the left having a radius of 230.00 feet and central angle of 54°-00'-11", an arc distance of 216.78 feet; thence bearing S 30°54'28" W, a distance of 306.72 feet; thence bearing N 90°00'00" W, a distance of 449.38 feet, to a point on the East line of Smithmoor Eight Addition to Wichita, Sedgwick County, Kansas; thence bearing S 00°00'00" E, a distance of 30.00 feet, to the Southeast Corner of said Smithmoor Eight Addition; thence bearing N 90°00'00" W, a distance of 278.00 feet to the Southwest Corner of said Smithmoor Eight Addition; thence bearing S 00°00'00" E, a distance of 555.76 feet to the point of beginning, containing an area of 32.87 acres more or less, EXCEPT the East 60 feet for Greenwich Road Right-of-Way.

Subdivider

Smith & Company
P.O. Box 780595
Wichita, Kansas 67278

Surveyor/Engineer

Babar M. Khan P.E., L.S.
Municipal Engineers, P.A.
254-Laura, Suite 201
Wichita, Kansas 67211

Total Area

32.87 ± Acres

Zoning

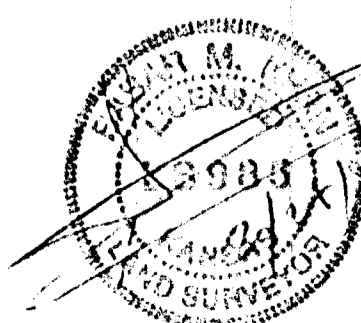
Single Family

Min. Lot Size

6,000 S.F.

Total Number of Lots

106



Project No. 99-08

ME MUNICIPAL ENGINEERS, P.A.
254-LAURA, SUITE 201
WICHITA, KANSAS 67211