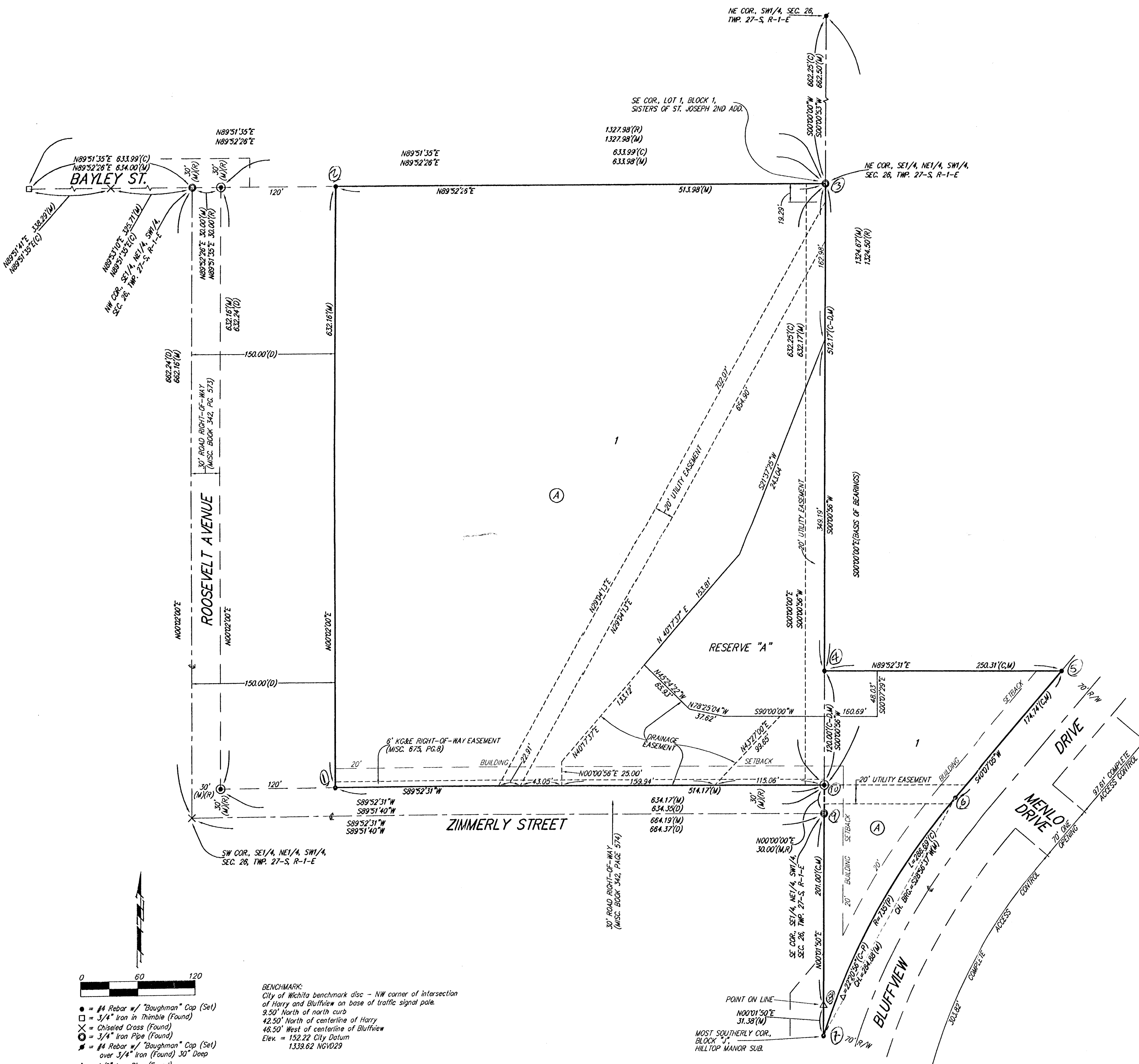


# SISTERS OF ST. JOSEPH 5TH ADDITION

## WICHITA, SEDGWICK COUNTY, KANSAS

*April 4/03*



LOT	BLOCK	ELEVATION CITY DATUM
1	A	142.0

State of Kansas) SS We, Baughman Company, P.A., Surveyors in aforesaid county and state do hereby certify that we have surveyed and platted "SISTERS OF ST. JOSEPH 5TH ADDITION", Wichita, Sedgwick County, Kansas and that the accompanying plat is a true and correct exhibit of the property surveyed, described as the SE 1/4 of the NE 1/4 of the SW 1/4 of Section 26, Twp. 27-S, R-1-E of the 6th P.M., Sedgwick County, Kansas, except the west 150 feet thereof, and EXCEPT the south 30 feet thereof dedicated for street, TOGETHER with that part of Block J, Hilltop Manor, a Replat of parts of Hilltop Manor and Hilltop Manor 2nd Addition, being a Subdivision in Section 26, Township 27 South, Range 1 East of the 6th. Principal Meridian, in Sedgwick County, Kansas, described as follows: Beginning at the SE corner of the SE 1/4 of the NE 1/4 of said SW 1/4, said SE corner also being on the west line of said Block J; thence northerly along the west line of said Block J, 150.00 feet; thence easterly parallel with the south line of the NE 1/4 of said SW 1/4, 250.31 feet, more or less, to a point on the westerly right-of-way line of Bluffview Drive as dedicated in said Hilltop Manor; thence southwesterly along said westerly right-of-way line, 174.74 feet to a P.C. in said westerly right-of-way line; thence southwesterly along said westerly right-of-way line, being a curve to the left, having a radius of 375.00 feet, an arc distance of 286.69 feet to the most southerly corner of said Block J; thence northerly along the west line of said Block J, 232.38 feet to the point of beginning.

Existing public easements and dedications being vacated by virtue of K.S.A. 12-512(b). All being situated in the SE 1/4 and the SW 1/4 of Sec. 26, Twp. 27-S, R-1-E of the 6th P.M., Sedgwick County, Kansas. Baughman Company, P.A.

*Michael G. Conrey*  
 Michael G. Conrey, L.S. 874, 4-2-2003, Surveyor

Know all men by these presents that we, the undersigned, have caused the land in the surveyors certificate to be platted into a Lot, and a Block, to be known as "SISTERS OF ST. JOSEPH 5TH ADDITION", Wichita, Sedgwick County, Kansas. The utility easements are hereby granted as indicated for the construction and maintenance of all public utilities. The drainage easement is hereby granted as indicated for drainage purposes. Reserve "A" is hereby reserved for landscaping, sidewalks, open space, lakes, drainage purposes and utilities confined to easements. Reserve "A" shall be owned and maintained by the owner of Lot 1, Block A. Access controls shall be as depicted on the face of the plat and are hereby granted to the City of Wichita, Kansas. The permitted opening locations shall be as determined by the City Engineer of the City of Wichita, Kansas. The Minimum Building Pad Elevations for the lowest opening to the structures shall be as indicated on the face of the plat.

The Sisters of Saint Joseph of Wichita, Kansas, a Kansas not-for-profit corporation  
*Sister Helene Lentz*, President  
*Sister Pamela Young*, Secretary

State of Kansas) SS The foregoing instrument acknowledged before me, this 6th day of June, 2003, by Sister Helene Lentz, President of the Sisters of Saint Joseph of Wichita, Kansas, a Kansas not-for-profit corporation, on behalf of the corporation.

*Mary Storrer Reed*, Notary Public  
 My App't. Exp. 6/30/2003

State of Kansas) SS The foregoing instrument acknowledged before me, this 6th day of June, 2003, by Sister Pamela Young, Secretary of the Sisters of Saint Joseph of Wichita, Kansas, a Kansas not-for-profit corporation, on behalf of the corporation.

*Mary Storrer Reed*, Notary Public  
 My App't. Exp. 6/30/2003

This plat of "SISTERS OF ST. JOSEPH 5TH ADDITION", Wichita, Sedgwick County, Kansas has been submitted to and approved by the Wichita-Sedgwick County Metropolitan Area Planning Commission, Wichita, Kansas.  
 Dated this \_\_\_\_\_ day of \_\_\_\_\_, 2003.  
 Wichita-Sedgwick County Metropolitan Area Planning Commission

\_\_\_\_\_, Chair  
 J. D. Michaelis  
 \_\_\_\_\_, Secretary  
 Dale Miller

This plat approved and all dedications shown hereon accepted by the City Council of the City of Wichita, Kansas, this \_\_\_\_\_ day of \_\_\_\_\_, 2003.  
 At the direction of the City Council

\_\_\_\_\_, City Manager  
 Chris Cherches  
 \_\_\_\_\_, City Clerk  
 Pat Graves

Reviewed in accordance with K.S.A. 58-2005 on this \_\_\_\_\_ day of \_\_\_\_\_, 2003.

Tricia L. Robello, L.S. #1246  
 Deputy County Surveyor  
 Sedgwick County, Kansas

Entered on transfer record this \_\_\_\_\_ day of \_\_\_\_\_, 2003.

Don Brace, County Clerk

State of Kansas) SS This is to certify that this plat has been filed for record in the office of the Register of Deeds, this \_\_\_\_\_ day of \_\_\_\_\_, 2003 at \_\_\_\_\_ o'clock \_\_\_\_\_ M.; and is duly recorded.

\_\_\_\_\_, Register of Deeds  
 Bill Meek  
 \_\_\_\_\_, Deputy  
 Linda Kizzire

**BAUGHMAN COMPANY P. A.**  
 ENGINEERING, SURVEYING, & PLANNING  
 316-282-7271 • 315 ELLIS • WICHITA, KANSAS 67211  
 F:\1647\SISTERS\DWG\SISTER.DWG-MCC