

DRAINAGE CONCEPT

SISTERS OF ST. JOSEPH 5TH ADDITION

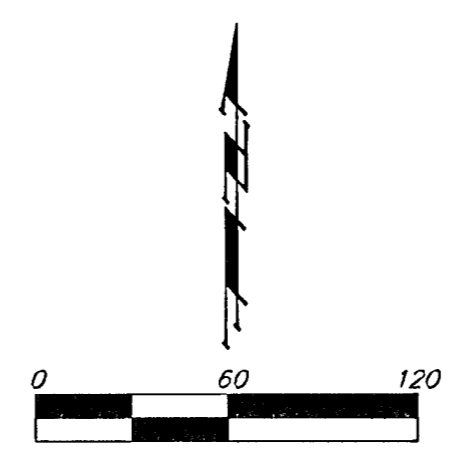
WICHITA, SEDGWICK COUNTY, KANSAS

FLAT BASIN:
 O.A. = 10.13
 T_c = 15 min.
 EXIST. CONDITIONS:
 C_s = 40
 Q_s = 16 cfs
 Q_m = 19 cfs
 Q_w = 30 cfs
 DEV. CONDITIONS:
 C_s = 52/54/67
 Q_s = 20 cfs
 Q_m = 25 cfs
 Q_w = 50 cfs

NE COR. SW 1/4, SEC. 26,
 TWP. 27-S, R-1-E

SISTERS OF ST. JOSEPH
 SECOND ADDITION

NE COR. SE 1/4, NE 1/4 SW 1/4,
 SEC. 26, TWP. 27-S, R-1-E



Date of Preparation: 6 June 2002
 Date of Topography: 24 May 2002
 Contour Interval = 1 Ft.

- = #4 Baughman Rebar (Set)
- = 3/4" Iron in Thimble (Found)
- × = Chiseled Cross (Found)
- = 3/4" Iron Pipe (Found)
- ⊙ = 3/4" Iron Pipe (Found) 30" Deep
- ⊙ = #4 Baughman Rebar Over
- △ = 1/2" Iron Pipe (Found)

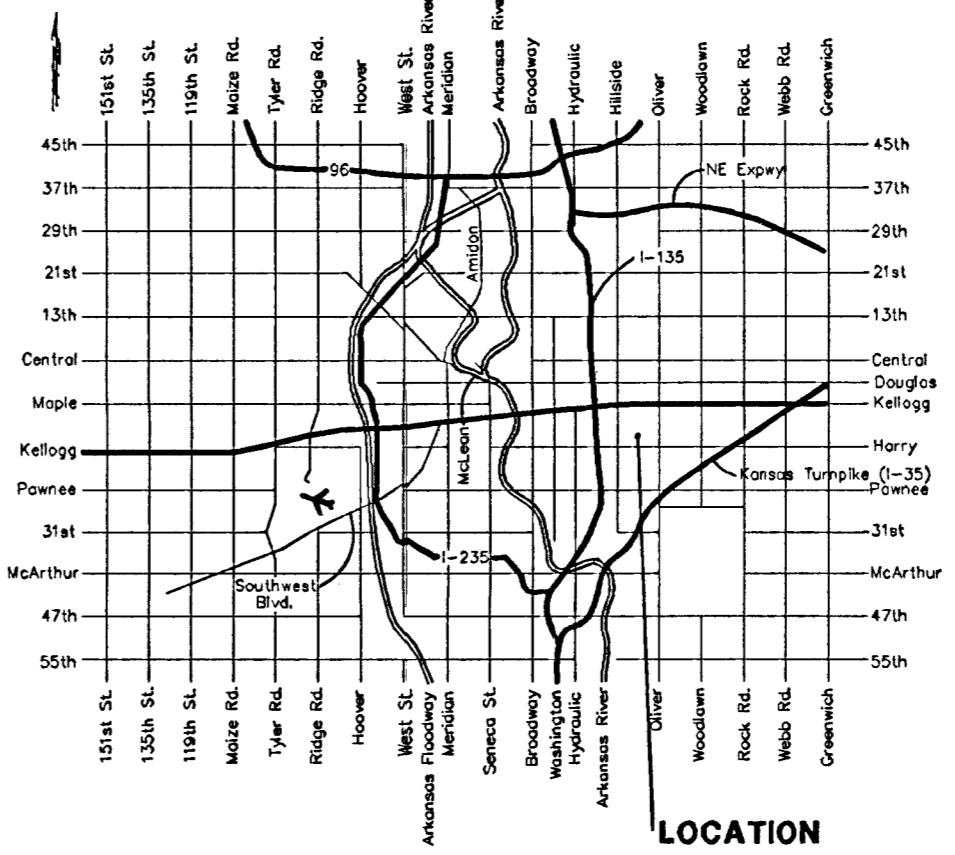
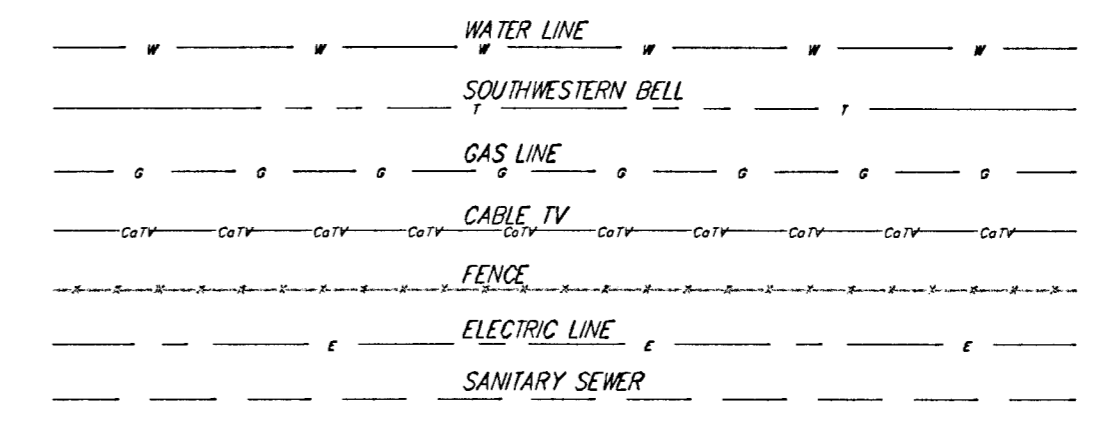
- (M) = Measured
- (D) = Described
- (R) = Record
- (C) = Calculated
- (G-D) = Calculated per Described Info.

- CM = Gas Meter
- OA = Ouy Anchor
- SSMH = Sanitary Sewer Manhole
- HLP = High Line Pole
- LP = Light Pole
- KGMH = Kansas Gas Electric Manhole
- PP = Power Pole
- SHLP = Steel High Line Pole
- GU = Guard Post (Ballard)
- △ Sign = Sign
- FH = Fire Hydrant

LEGAL DESCRIPTION:
 The SE 1/4 of the NE 1/4 of the SW 1/4 of Sec. 26, Twp. 27-S, R-1-E of the 6th P.M., Sedgwick County, Kansas, TOGETHER with that part of Reserve "J", Hilltop Manor, a Re-plot of parts of Hilltop Manor and Hilltop Manor 2nd Addition, being a subdivision in Section 26, Township 27 South, Range 1 East of the 6th Principal Meridian, in Sedgwick County, Kansas lying south of and adjacent to the following described line: Commencing at the SE corner of the SE 1/4 of the NE 1/4 of the SW 1/4 of said Sec. 26; thence northerly along the east line of the SE 1/4 of the NE 1/4 of said SW 1/4, 150.00 feet for a point of beginning; thence easterly parallel with the south line of the SE 1/4 of the NE 1/4 of said SW 1/4 to a point on the westerly right-of-way line of Bluffview Drive as dedicated in said Hilltop Manor, and there ending.

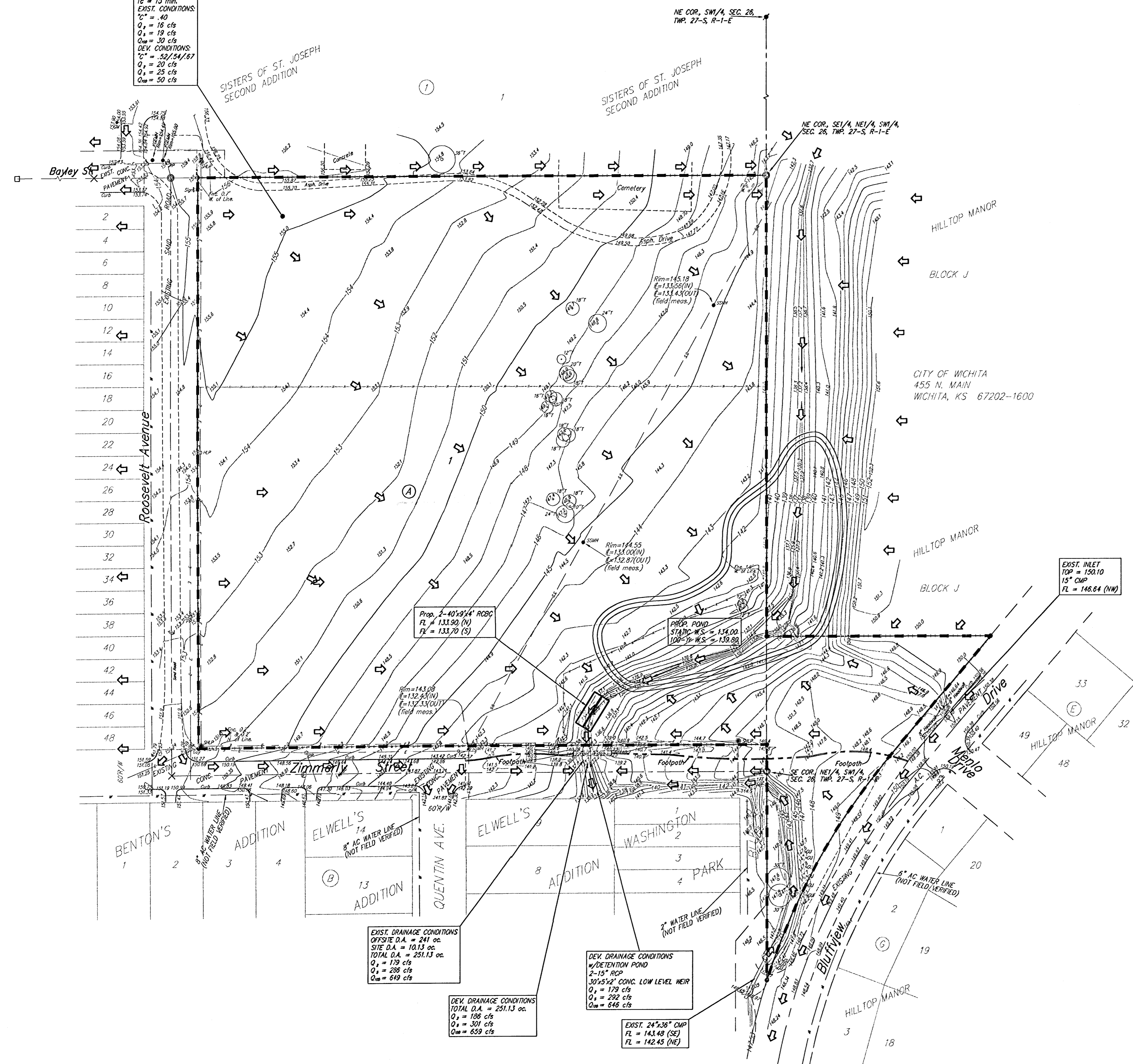
BENCHMARK:
 City of Wichita benchmark disc - NW corner of intersection of Harry and Bluffview on base of traffic signal pole.
 42.50' North of centerline of Harry
 46.50' West of centerline of Bluffview
 Elev. = 152.22 City Datum
 1339.62 NGVD29

OWNER/DEVELOPER:
 The Sisters of St. Joseph of Wichita, Kansas
 3700 E. Lincoln
 Wichita, KS 67218-2008



VICINITY MAP

DRAINAGE NOTE:
 THIS PARCEL OF LAND IS LOCATED IN ZONE C PER FEDERAL EMERGENCY MANAGEMENT AGENCY (FEMA) FEDERAL INSURANCE RATE MAP (FIRM), COMMUNITY NUMBER/PANEL NUMBER 200328 00258, EFFECTIVE DATE, MAY 15, 1998.



EXIST. DRAINAGE CONDITIONS
 OFFSITE O.A. = 241 ac.
 SITE O.A. = 101.13 ac.
 TOTAL O.A. = 251.13 ac.
 Q_s = 179 cfs
 Q_m = 236 cfs
 Q_w = 619 cfs

DEV. DRAINAGE CONDITIONS
 w/ DETENTION POND
 2-15" RCP
 30"x52" CONC. LOW LEVEL WEIR
 Q_s = 179 cfs
 Q_m = 292 cfs
 Q_w = 646 cfs

DEV. DRAINAGE CONDITIONS
 TOTAL O.A. = 251.13 ac.
 Q_s = 186 cfs
 Q_m = 301 cfs
 Q_w = 659 cfs

EXIST. 24"x36" CMP
 FL = 143.48 (SE)
 FL = 142.45 (NE)

EXIST. INLET
 TOP = 150.10
 15" CMP
 FL = 146.64 (NW)

6 JUNE 2002