

DRAINAGE PLAN

SISTERS OF ST. JOSEPH 5TH ADDITION

WICHITA, SEDGWICK COUNTY, KANSAS

NE COR. SW 1/4, SEC. 26,
TWP. 27-S, R-1-E

PLAT BASIN:
D.A. = 10.13
Tc = 15 min.
EXST. CONDITIONS:
Q₁ = 40 cfs
Q₂ = 16 cfs
Q₃ = 19 cfs
Q₄ = 30 cfs
DEV. CONDITIONS:
Q₁ = 52.54/67
Q₂ = 20 cfs
Q₃ = 25 cfs
Q₄ = 50 cfs

Date of Preparation: 6 June 2002
Date of Topography: 24 May 2002
Contour Interval = 1 Ft.

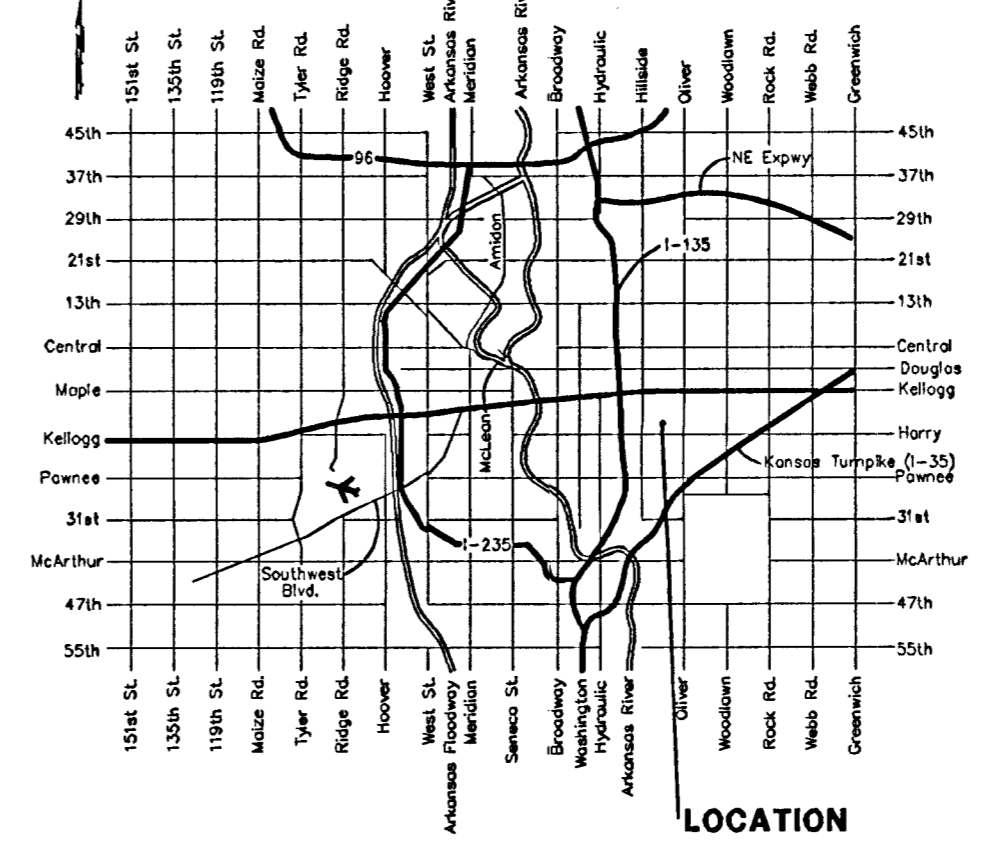
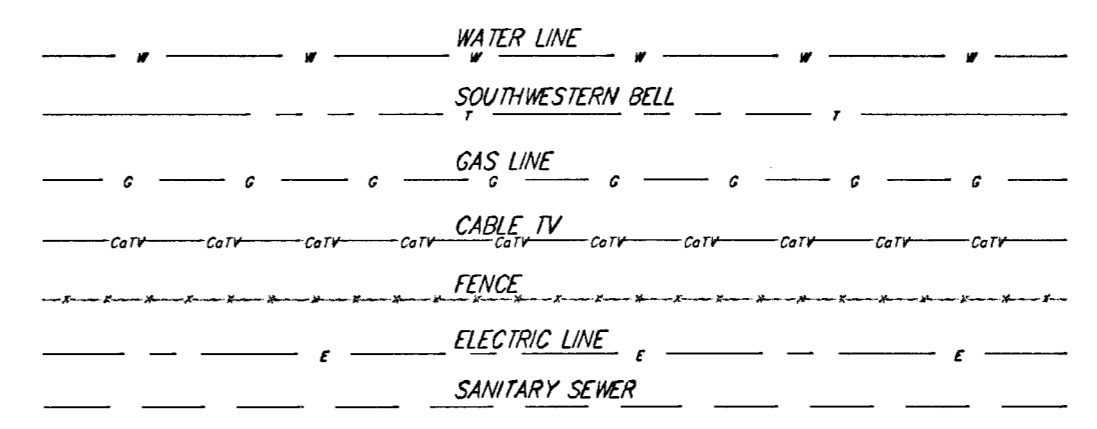
- = #4 Baughman Rebar (Set)
- = 3/4" Iron in Thimble (Found)
- ⊗ = Chiseled Cross (Found)
- ⊙ = 3/4" Iron Pipe (Found)
- ⊛ = 3/4" Iron Pipe (Found) 30" Deep
- ⊜ = Set #4 Baughman Rebar Over
- △ = 1/2" Iron Pipe (Found)

- ⊙ = Gas Meter
- ⊖ = Guy = Guy Anchor
- ⊙ = Sanitary Sewer Manhole
- ⊙ = High Line Pole
- ⊙ = Light Pole
- ⊙ = Kansas Gas Electric Manhole
- ⊙ = Power Pole
- ⊙ = Steel High Line Pole
- ⊙ = Guard Post (Bollard)
- ⊙ = Sign
- ⊙ = Fire Hydrant

LEGAL DESCRIPTION:
The SE 1/4 of the NE 1/4 of the SW 1/4 of Sec. 26, Twp. 27-S, R-1-E of the 6th P.M., Sedgwick County, Kansas, TOGETHER with that part of Reserve "A", Hilltop Manor, a 10-acre plot of parts of Hilltop Manor and Hilltop Manor 2nd Addition, being a subdivision in Section 26, Township 27 South, Range 1 East of the 6th. Principal Meridian, in Sedgwick County, Kansas lying south of and adjacent to the following described line: Commencing at the SE corner of the SE 1/4 of the NE 1/4 of the SW 1/4 of said Sec. 26; thence northerly along the east line of the SE 1/4 of the NE 1/4 of said SW 1/4, 150.00 feet for a point of beginning; thence easterly parallel with the south line of the SE 1/4 of the NE 1/4 of said SW 1/4 to a point on the westerly right-of-way line of Bluffview Drive as dedicated in said Hilltop Manor, and there ending.

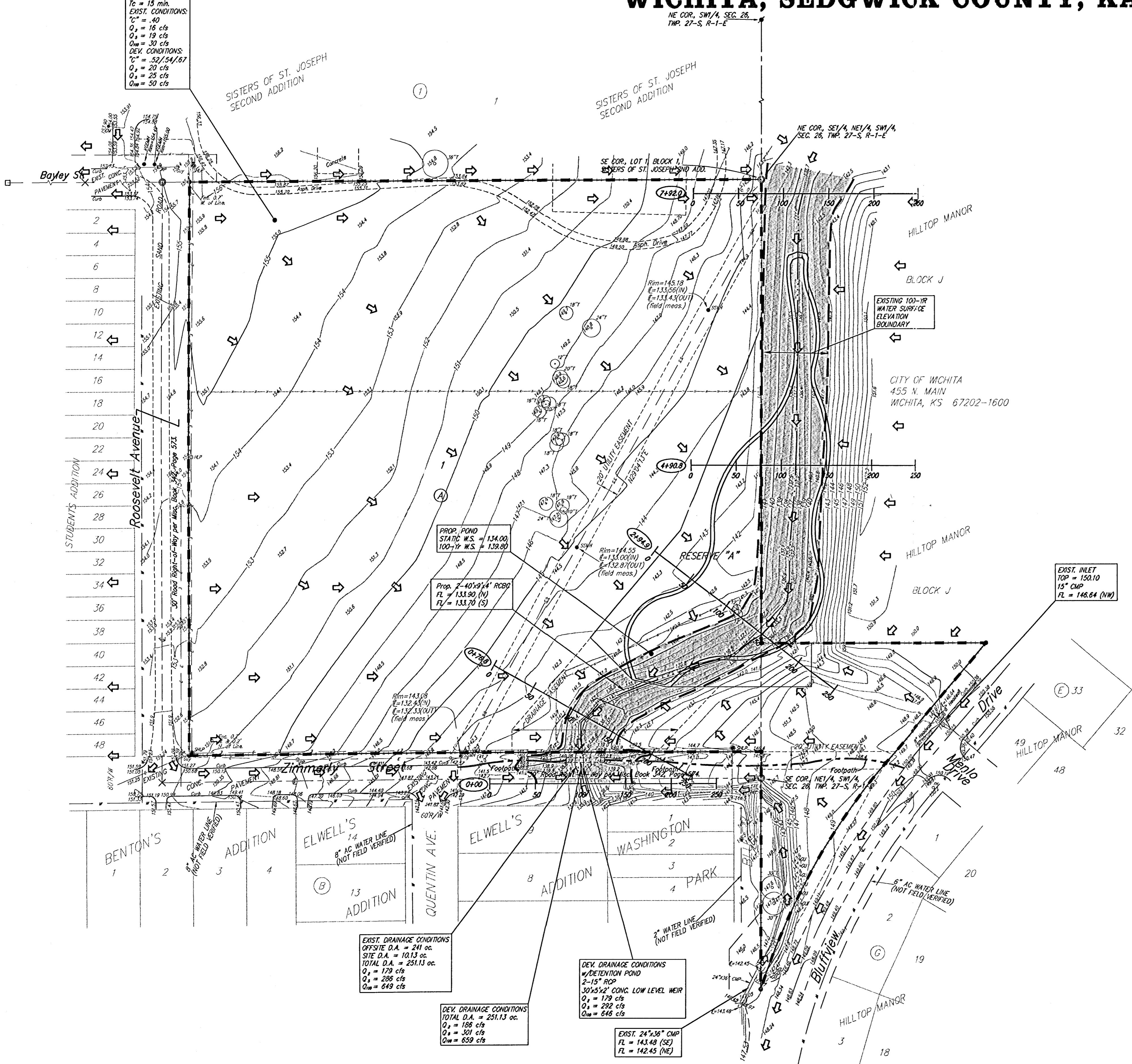
BENCHMARK:
City of Wichita benchmark disc - NW corner of intersection of Harry and Bluffview on base of traffic signal pole.
3.50' North of north curb
42.50' North of centerline of Harry
48.50' West of centerline of Bluffview
Elev. = 152.22 City Datum
1339.62 NGVD29

OWNER/DEVELOPER:
The Sisters of St. Joseph of Wichita, Kansas
3700 E. Lincoln
Wichita, KS 67218-2008



LOT	BLOCK	ELEVATION
1	A	143.0

DRAINAGE NOTE:
THIS PARCEL OF LAND IS LOCATED IN ZONE C PER FEDERAL EMERGENCY MANAGEMENT AGENCY (FEMA) FEDERAL INSURANCE RATE MAP (FIRM), COMMUNITY NUMBER/PANEL NUMBER 200328 0025B, EFFECTIVE DATE, MAY 15, 1986.



EXST. DRAINAGE CONDITIONS
OFFSITE D.A. = 241 ac.
SITE D.A. = 10.13 ac.
TOTAL D.A. = 251.13 ac.
Q₁ = 179 cfs
Q₂ = 288 cfs
Q₃ = 649 cfs

DEV. DRAINAGE CONDITIONS
DETENTION POND
2-15" RCP
30'x52' CONC. LOW LEVEL WEIR
Q₁ = 179 cfs
Q₂ = 292 cfs
Q₃ = 648 cfs

DEV. DRAINAGE CONDITIONS
TOTAL D.A. = 251.13 ac.
Q₁ = 188 cfs
Q₂ = 301 cfs
Q₃ = 659 cfs

EXST. 24"x36" CMP
FL = 143.48 (SE)
FL = 142.45 (NE)

PROP. POND
STATIC W.S. = 134.00
100-YR. W.S. = 139.80

PROP. 7'-40"x14" RCP
FL = 133.90 (N)
FL = 133.70 (S)

EXST. INLET
TOP = 150.10
15" CMP
FL = 146.64 (NW)