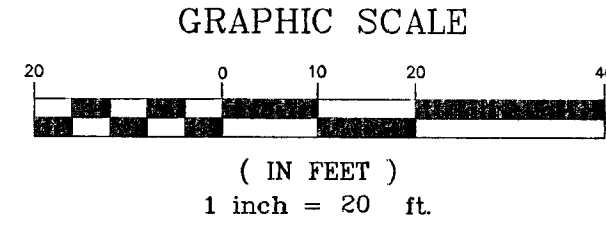
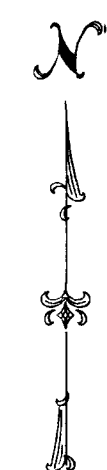
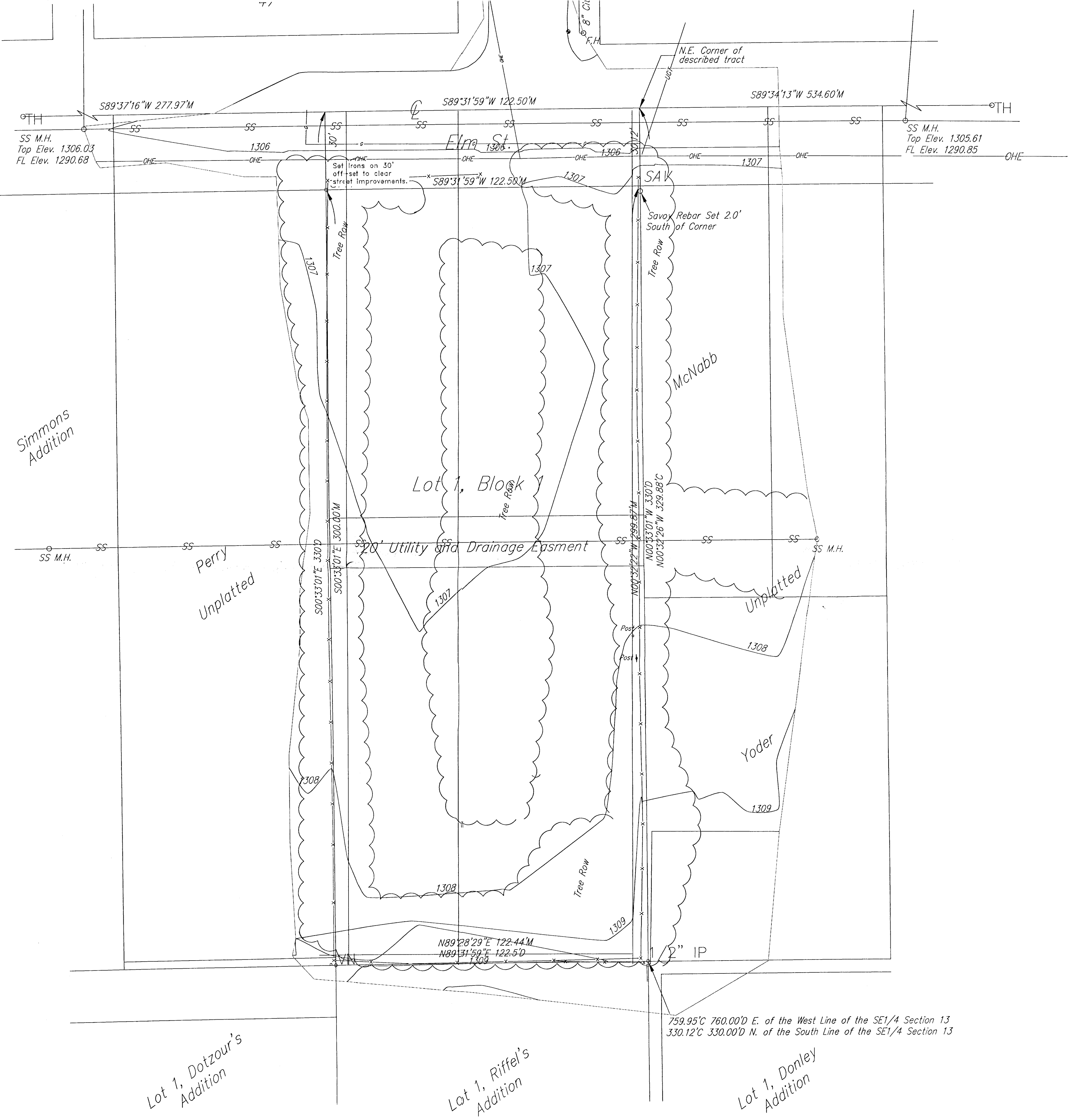


Preliminary Plat Simmons 2nd Addition

Wichita, Sedgwick County, Kansas



LEGEND

- P = Plotted
- M = Measured
- C = Calculated
- SAV 1/2" REBAR W/SAVOY CAP (SET)
- W CHISELED V-NOTCH (SET)
- ST CITY OF WICHITA CONTROL
- 60D NAIL 60D NAIL (FOUND)
- B.M. BENCH MARK
- TELE. PED TELEPHONE PEDESTAL
- C.O. CLEAN OUT
- ← GUY ANCHOR
- HIGH LINE POLE
- M.B. MAIL BOX
- L.P. POWER POLE W/LIGHT
- POWER POLE
- WELL WATER WELL
- W.M. WATER METER
- SS M.H. SANITARY SEWER MANHOLE
- SWS M.H. STORM WATER SEWER MANHOLE

Legal Description:

A tract beginning 760 feet east and 330 feet north of the southeast quarter of section 13, township 27 south, range 1 west of the 6th p.m., sedgwick county, kansas, thence west 122.5 feet; thence north 330 feet; thence east 122.5 feet; thence south to beginning.

OWNER:
DRN Investments, LLC
Attn: Dennis Niedens
14530 Killarino Cir.
Wichita, Kansas 67230

Phone:
316-304-5550

GROSS SIZE:
40,425 Sq. Ft.
.9 Acres±

NET SIZE OF PLAT:
36750 Sq. Ft.
.84 Acres±

MINIMUM LOT SIZE:
36750 Sq. Ft.
.84 Acres±

ZONING:
TF 3- Two-Family District

CONTROL NUMBER:
206679
206680

759.95'± 760.00'± E. of the West Line of the SE1/4 Section 13
330.12'± 330.00'± N. of the South Line of the SE1/4 Section 13

Lot 1, Dotzour's Addition

Lot 1, Riffel's Addition

Lot 1, Donley Addition



Savoy Company, P.A.
Land Surveyors

PH (316) 265-0005
FAX (316) 265-0275

PROJECT NO. 080009421 P

433 S. Hydraulic, Wichita, KS 67211-1911
www.savoyco.com

9 MAY 08