

DRAINAGE CONCEPT HUNTERS GLEN ADDITION WICHITA, SEDGWICK COUNTY, KANSAS

CONTRACT PURCHASER SUBMITTED:

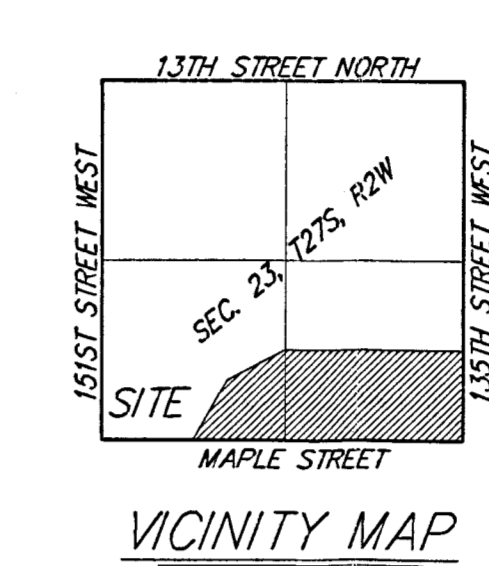
Russell Development
ATTN: Joy Russell
12602 W. 13th Street
Wichita, KS 67235
316-722-2417

BENCHMARK:

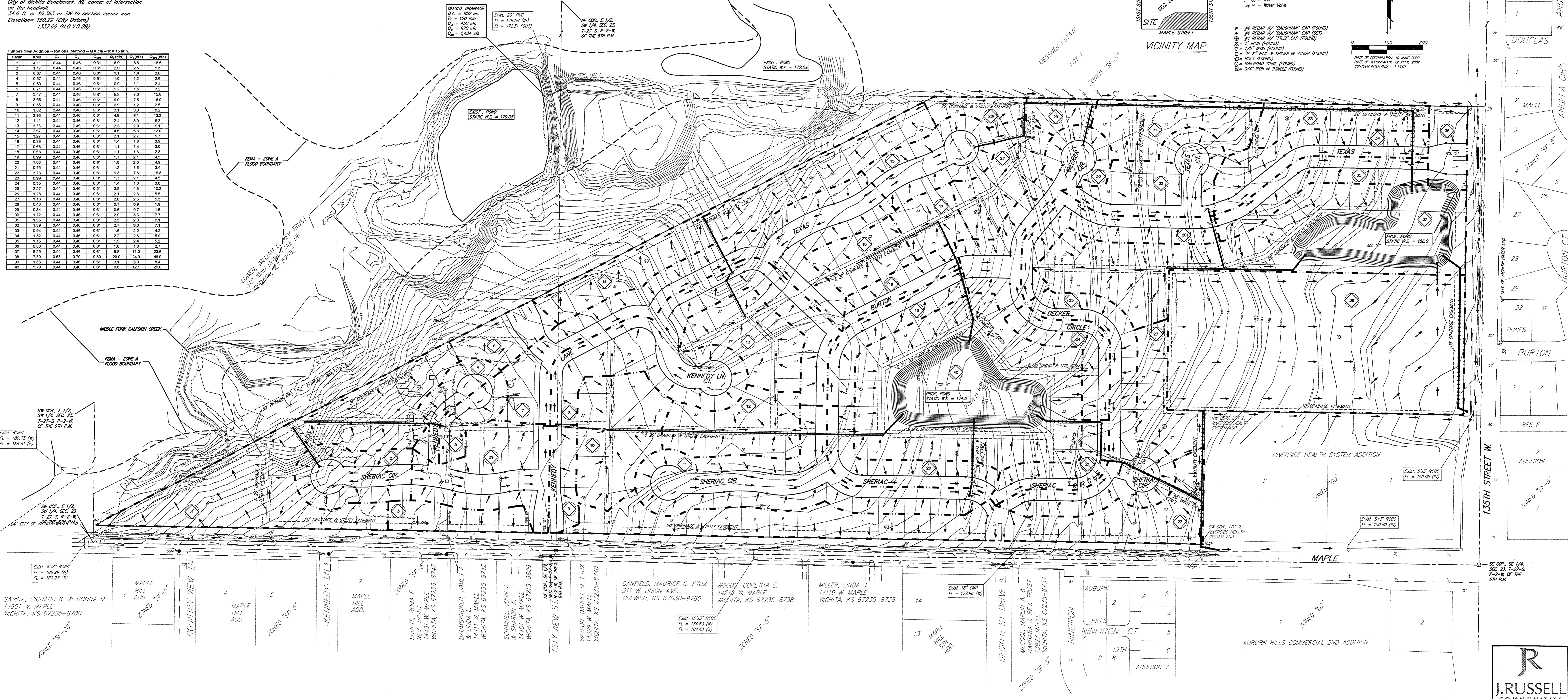
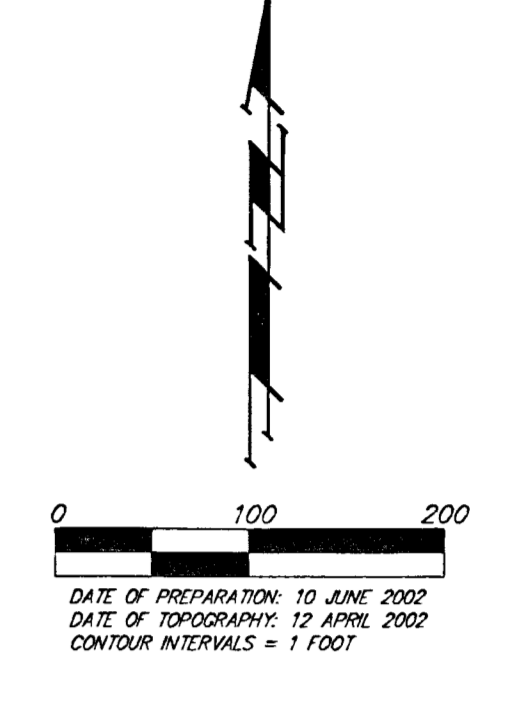
City of Wichita Benchmark, NE corner of intersection
of the frontlot.
34.0 ft. or 10.363 m SW to section corner iron
Elevation= 130.29 (City Datum)
1337.69 (N.G. V.D. 29)

Hunters Glen Addition - Rational Method - Q = csa - tc = 15 min.

Basin	Area	C ₁	C ₂	C ₃	C ₄	Q ₁ (15)	Q ₂ (15)	Q ₃ (15)	Q ₄ (15)
1	4.11	0.44	0.48	0.81	0.81	0.9	0.9	0.9	0.9
2	1.17	0.44	0.48	0.81	0.81	0.2	0.2	0.2	0.2
3	0.67	0.44	0.48	0.81	0.81	0.1	0.1	0.1	0.1
4	0.55	0.44	0.48	0.81	0.81	0.1	0.1	0.1	0.1
5	0.53	0.44	0.48	0.81	0.81	0.1	0.1	0.1	0.1
6	0.71	0.44	0.48	0.81	0.81	0.2	0.2	0.2	0.2
7	3.47	0.44	0.48	0.81	0.81	0.8	0.8	0.8	0.8
8	3.56	0.44	0.48	0.81	0.81	0.9	0.9	0.9	0.9
9	0.55	0.44	0.48	0.81	0.81	0.1	0.1	0.1	0.1
10	1.80	0.44	0.48	0.81	0.81	0.3	0.3	0.3	0.3
11	2.65	0.44	0.48	0.81	0.81	0.6	0.6	0.6	0.6
12	1.41	0.44	0.48	0.81	0.81	0.2	0.2	0.2	0.2
13	1.25	0.44	0.48	0.81	0.81	0.2	0.2	0.2	0.2
14	2.67	0.44	0.48	0.81	0.81	0.5	0.5	0.5	0.5
15	1.23	0.44	0.48	0.81	0.81	0.2	0.2	0.2	0.2
16	0.86	0.44	0.48	0.81	0.81	0.1	0.1	0.1	0.1
17	0.86	0.44	0.48	0.81	0.81	0.1	0.1	0.1	0.1
18	0.65	0.44	0.48	0.81	0.81	0.1	0.1	0.1	0.1
19	0.99	0.44	0.48	0.81	0.81	0.2	0.2	0.2	0.2
20	1.06	0.44	0.48	0.81	0.81	0.2	0.2	0.2	0.2
21	0.76	0.44	0.48	0.81	0.81	0.1	0.1	0.1	0.1
22	3.73	0.44	0.48	0.81	0.81	0.9	0.9	0.9	0.9
23	0.90	0.44	0.48	0.81	0.81	0.2	0.2	0.2	0.2
24	0.90	0.44	0.48	0.81	0.81	0.2	0.2	0.2	0.2
25	2.55	0.44	0.48	0.81	0.81	0.6	0.6	0.6	0.6
26	1.25	0.44	0.48	0.81	0.81	0.2	0.2	0.2	0.2
27	1.18	0.44	0.48	0.81	0.81	0.2	0.2	0.2	0.2
28	0.43	0.44	0.48	0.81	0.81	0.0	0.0	0.0	0.0
29	0.26	0.44	0.48	0.81	0.81	0.0	0.0	0.0	0.0
30	1.72	0.44	0.48	0.81	0.81	0.3	0.3	0.3	0.3
31	1.26	0.44	0.48	0.81	0.81	0.2	0.2	0.2	0.2
32	0.94	0.44	0.48	0.81	0.81	0.1	0.1	0.1	0.1
33	1.26	0.44	0.48	0.81	0.81	0.2	0.2	0.2	0.2
34	1.19	0.44	0.48	0.81	0.81	0.2	0.2	0.2	0.2
35	1.19	0.44	0.48	0.81	0.81	0.2	0.2	0.2	0.2
36	0.60	0.44	0.48	0.81	0.81	0.1	0.1	0.1	0.1
37	5.25	0.44	0.48	0.81	0.81	0.8	0.8	0.8	0.8
38	2.62	0.44	0.48	0.81	0.81	0.5	0.5	0.5	0.5
39	1.86	0.44	0.48	0.81	0.81	0.3	0.3	0.3	0.3
40	5.78	0.44	0.48	0.81	0.81	0.8	0.8	0.8	0.8



- OP = Catcher/Ty Protector
- FR = Electric Box
- PH = Fire Hydrant
- CM = Fire Manhole
- GM = Gas Manhole
- PH = Day Anchor
- PH = Pipeline Marker
- PP = Power Pole
- SM = Sign
- SMW = Sanitary Sewer Manhole
- T = Tree
- WV = Water Valve



SAVINA, RICHARD K. & DONNA M.
14901 W. MAPLE
WICHITA, KS 67235-8700

MAPLE HILL ADD.
ZONED "S-5"

COUNTRY VIEW LN.
ZONED "S-5"

MAPLE HILL ADD.
ZONED "S-5"

KENNEDY LN.
ZONED "S-5"

SHULTS, ROMA E.
REV. TRUST
14411 W. MAPLE
WICHITA, KS 67235-8742

BAUGER, JAMES J.
& LINDA L.
14411 W. MAPLE
WICHITA, KS 67235-8742

SCHMIDT, JOHN A.
& SHARON A.
14401 W. MAPLE
WICHITA, KS 67215-9809

CITY VIEW ST.
ZONED "S-5"

WATSON, DARRYL M. ETUX
& LINDA W.
14203 W. MAPLE
WICHITA, KS 67235-8740

CANFIELD, MAURICE C. ETUX
211 W. UNION AVE.
COL. WICH. KS 67230-9780

WOOD, CORETHA E.
14219 W. MAPLE
WICHITA, KS 67235-8738

MILLER, LINDA J.
14119 W. MAPLE
WICHITA, KS 67235-8738

MAPLE HILL ADD.
ZONED "S-5"

DECKER ST. DRIVE
ZONED "S-5"

MCDONALD, MARIAN A. &
BARBARA J. REV. TRUST
13927 MAPLE
WICHITA, KS 67235-8734

NINEIRON CT.
ZONED "S-5"

AUBURN HILLS COMMERCIAL 2ND ADDITION
ZONED "C-1"



29 JULY 2002
BAUGHMAN COMPANY P. A.
ENGINEERING, SURVEYING, & PLANNING
316-243-7071 • 316-243-7072 • WICHITA, KANSAS 67201