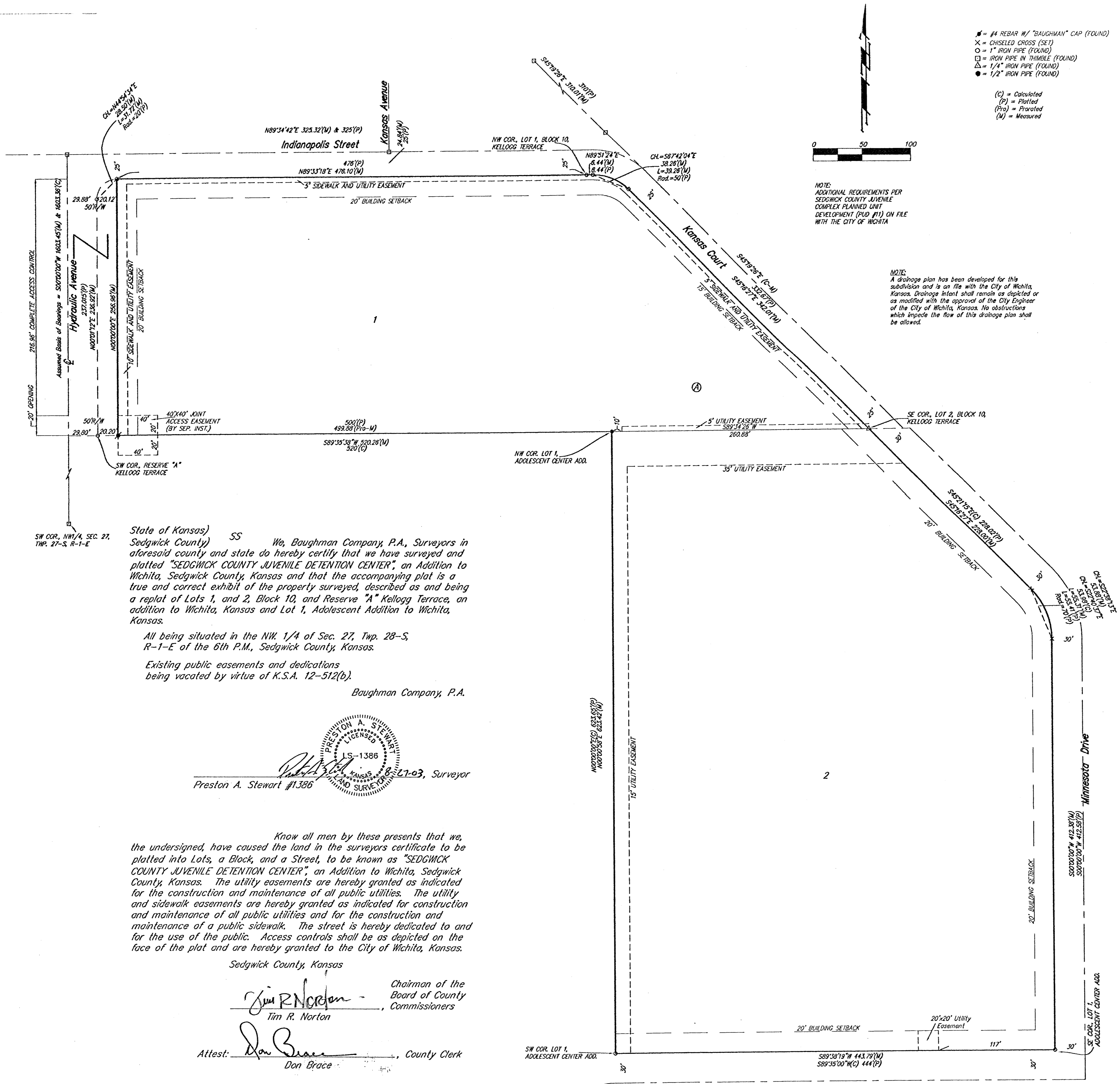


# SEDGWICK COUNTY JUVENILE DETENTION CENTER

## AN ADDITION TO WICHITA, SEDGWICK COUNTY, KANSAS



State of Kansas) SS  
 Sedgwick County) We, Baughman Company, P.A., Surveyors in  
 aforesaid county and state do hereby certify that we have surveyed and  
 platted "SEDGWICK COUNTY JUVENILE DETENTION CENTER", an Addition to  
 Wichita, Sedgwick County, Kansas and that the accompanying plat is a  
 true and correct exhibit of the property surveyed, described as and being  
 a replat of Lots 1, and 2, Block 10, and Reserve "A" Kellogg Terrace, an  
 addition to Wichita, Kansas and Lot 1, Adolescent Addition to Wichita,  
 Kansas.

All being situated in the NW 1/4 of Sec. 27, Twp. 28-S,  
 R-1-E of the 6th P.M., Sedgwick County, Kansas.

Existing public easements and dedications  
 being vacated by virtue of K.S.A. 12-512(b).

Baughman Company, P.A.

Preston A. Stewart #1386, Surveyor

Know all men by these presents that we, the undersigned, have caused the land in the surveyors certificate to be platted into Lots, a Block, and a Street, to be known as "SEDGWICK COUNTY JUVENILE DETENTION CENTER", an Addition to Wichita, Sedgwick County, Kansas. The utility easements are hereby granted as indicated for the construction and maintenance of all public utilities. The utility and sidewalk easements are hereby granted as indicated for construction and maintenance of all public utilities and for the construction and maintenance of a public sidewalk. The street is hereby dedicated to and for the use of the public. Access controls shall be as depicted on the face of the plat and are hereby granted to the City of Wichita, Kansas.

Sedgwick County, Kansas

Tim R. Norton, Chairman of the Board of County Commissioners

Attest:   
 Don Brace, County Clerk

State of Kansas) SS  
 Sedgwick County) The foregoing instrument acknowledged before  
 me, this 16th day of September, 2003, by Tim R. Norton, Chairman of the  
 Board of County Commissioners of Sedgwick County, Kansas, on  
 behalf of Sedgwick County, Kansas.

Carol S. Cole, Notary Public  
 My App't. Exp. 7-23-2007

This plat of "SEDGWICK COUNTY JUVENILE DETENTION CENTER", an Addition to Wichita, Sedgwick County, Kansas has been submitted to and approved by the Wichita-Sedgwick County Metropolitan Area Planning Commission, Wichita, Kansas.

Dated this \_\_\_\_\_ day of \_\_\_\_\_, 2003.  
 Wichita-Sedgwick County Metropolitan Area Planning Commission

\_\_\_\_\_, Chair  
 Bernard A. Hentzen

\_\_\_\_\_, Secretary  
 John L. Schlegel

This plat approved and all dedications shown herein accepted by the City Council of the City of Wichita, Kansas, this \_\_\_\_\_ day of \_\_\_\_\_, 2003.

\_\_\_\_\_, Mayor  
 Carlos Moyens

\_\_\_\_\_, City Clerk  
 Pat Graves

Reviewed in accordance with K.S.A. 58-2005  
 on this 3rd day of September, 2003.

L. Robello, L.S. #1246  
 Deputy County Surveyor  
 Sedgwick County, Kansas

Entered on transfer record this \_\_\_\_\_ day of \_\_\_\_\_, 2003.

Don Brace, County Clerk

State of Kansas) SS This is to certify that this plat has been  
 Sedgwick County) filed for record in the office of the Register of Deeds, this \_\_\_\_\_ day  
 of \_\_\_\_\_, 2003 at \_\_\_\_\_ o'clock \_\_\_\_\_ M., and is duly recorded.

\_\_\_\_\_, Register of Deeds  
 Bill Meek

\_\_\_\_\_, Deputy  
 Linda Kizire